



Image may be representation.
See specifications for product details.



MAX803SQ263T1G

Manufacturer Part Number	MAX803SQ263T1G
Manufacturer	onsemi
Allelco Part Number	32D-MAX803SQ263T1G
ECAD Model	Request Free CAD Models
Parts Description	IC SUPERVISOR 1 CHANNEL SC70-3
Package	SC-70, SOT-323
Data sheet	Cylindrical Battery Holders.pdf MAX803, NCP803 Series.pdf
RoHs Status	ROHS3 Compliant

Get a Quote

MAX803SQ263T1G - onsemi.New Original in Stock. Download Linear Technology MAX803SQ263T1G datasheet/specifications on AllelcoElec.com.
Request a quote for MAX803SQ263T1G, please send us email: info@allelco.com

Specifications

MAX803SQ263T1G Tech Specifications
MAX803SQ263T1G - onsemi technical specifications, attributes, parameters

Product Attribute	Attribute Value	Product Attribute	Attribute Value
Manufacturer	onsemi	Package / Case	SC-70, SOT-323
Voltage - Threshold	2.63V	Package	Tape & Reel (TR)
Type	Simple Reset/Power-On Reset	Output	Open Drain or Open Collector
Supplier Device Package	SC-70-3 (SOT323)	Operating Temperature	-40°C ~ 105°C (TJ)
Series	-	Number of Voltages Monitored	1
Reset Timeout	140ms Minimum	Mounting Type	Surface Mount
Reset	Active Low	Base Product Number	MAX803

Parts with Similar Specifications

The three parts on the right have similar specifications to onsemi MAX803SQ263T1G

Product Attribute				
Part Number	MAX803SQ263T1G	MAX803ZEHR+T	MAX803SQ293T1G	MAX803LEHR+T
Manufacturer	onsemi	Analog Devices Inc./Maxim Integrated	onsemi	Analog Devices Inc./Maxim Integrated
Base Product Number	MAX803	MAX803	MAX803	MAX803
Number of Voltages Monitored	1	1	1	1
Operating Temperature	-40°C ~ 105°C (TJ)	-40°C ~ 125°C (TA)	-40°C ~ 105°C (TJ)	-40°C ~ 125°C (TA)
Supplier Device Package	SC-70-3 (SOT323)	SC-70-3	SC-70-3 (SOT323)	SC-70-3
Voltage - Threshold	2.63V	2.32V	2.93V	4.63V
Output	Open Drain or Open Collector	Open Drain or Open Collector	Open Drain or Open Collector	Open Drain or Open Collector
Type	Simple Reset/Power-On Reset	Simple Reset/Power-On Reset	Simple Reset/Power-On Reset	Simple Reset/Power-On Reset
Mounting Type	Surface Mount	Surface Mount	Surface Mount	Surface Mount
Reset	Active Low	Active Low	Active Low	Active Low
Package	Tape & Reel (TR)	Tape & Reel (TR)	Tape & Reel (TR)	Tape & Reel (TR)
Reset Timeout	140ms Minimum	140ms Minimum	140ms Minimum	140ms Minimum
Series	-	-	-	-
Package / Case	SC-70, SOT-323	SC-70, SOT-323	SC-70, SOT-323	SC-70, SOT-323

MAX803SQ263T1G Datasheet PDF

Download MAX803SQ263T1G pdf datasheets and onsemi documentation for MAX803SQ263T1G - onsemi.

Datasheets

[Cylindrical Battery Holders.pdf](#)

Environmental Information

[onsemi RoHS.pdf](#)

[onsemi REACH.pdf](#)

[Material Declaration MAX803SQ263T1G.pdf](#)

HTML Datasheet

[MAX803, NCP803 Series.pdf](#)

Customers Also Interested in

Recommended Products



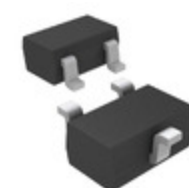
MAX803TEUR+T
Analog Devices / Maxim Integrated



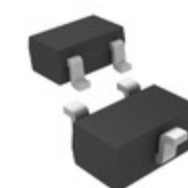
MAX803ZEHR+T
Analog Devices Inc./Maxim Integrated

MAX803TEHR
Analog Devices / Maxim Integrated

MAX803SQ293T1G
onsemi
IC SUPERVISOR 1 CHANNEL SC70-3



MAX803LEHR+T
Analog Devices Inc./Maxim Integrated



MAX803SEHR/V+T
Analog Devices Inc./Maxim Integrated

**MAX802TESA**

Analog Devices / Maxim Integrated

**MAX803SQ463T1G**onsemi
IC SUPERVISOR 1 CHANNEL SC70-3**MAX803REXR**

Analog Devices / Maxim Integrated

**MAX803SQ293D3T1G**onsemi
IC SUPERVISOR 1 CHANNEL SC70-3**MAX803SQ293D1T1G**onsemi
IC SUPERVISOR 1 CHANNEL SC70-3**MAX803REXR+T**Analog Devices Inc./Maxim Integrated
IC SUPERVISOR 1 CHANNEL SC70-3**MAX803REXR-T**

Analog Devices / Maxim Integrated

**MAX803TEXR+T**Analog Devices Inc./Maxim Integrated
IC SUPERVISOR 1 CHANNEL SC70-3**MAX803MEXR**Analog Devices Inc./Maxim Integrated
IC SUPERVISOR MAX803 3PIN MPU**MAX803SQ308T1G**onsemi
IC SUPERVISOR 1 CHANNEL SC70-3**MAX803SEXR+T**Analog Devices Inc./Maxim Integrated
IC SUPERVISOR 1 CHANNEL SC70-3**MAX803MEXR+T**Analog Devices Inc./Maxim Integrated
IC SUPERVISOR 1 CHANNEL SC70-3

Shipment

Delivery Time

In-stock items can be shipped within 24 hours. Some parts will be arranged for delivery within 1-2 days from the date all items arrive at our warehouse. And Alleco ships order once a day at about 17:00, except Sunday. Once the goods are shipped, the estimated delivery time depends on the shipping methods and Delivery destination. The table below shows are the logistic time for some common countries.

Delivery Cost

> Use your express account for shipment if you have one.

> Use our account for the shipment. Refer to the table below for the approximate charges.

(Different time frame / countries / package size has different price.)

Delivery Method

> Global Common Shipment by DHL / UPS / FedEx / TNT / EMS / SF we support.

> Others more shipping ways, please get in touch with your customer manager.

Common Countries Logistic Time Reference

Region	Country	Logistic Time(Day)
America	United States	5
	Brazil	7
Europe	Germany	5
	United Kingdom	4
	Italy	5
Oceania	Australia	6
	New Zealand	7
Asia	India	6
	Japan	7
Middle East	Israel	6

DHL & FedEx Shipment Charges Reference

Shipment charges(KG)	Reference DHL(USD\$)
0.00kg-1.00kg	USD\$60.00
1.00kg-2.00kg	USD\$70.00
2.00kg-3.00kg	USD\$80.00

Note: The above table is for reference only. There may have some data bias for the uncontrollable factors.

Contact us if you have any questions.

Payment Support

The payment method can be chosen from the methods shown below:

Wire Transfer (T/T, Bank Transfer), Western Union, Credit card, PayPal.



Your Faithful Supply Chain Partner -



Efficient Supply Management



Cost-Saving Procurement



Fast Sourcing & Delivery

Contact us if you have any questions.



Phone

+00852 9146 4856



Email

info@alleco.com

Certifications & Memberships



[View More](#)

Contact us

Address: Flat/Rm C 13/F Harvard Commercial Building 105-111 Thomson Road, Wan Chai, Hong Kong

Phone: +00852 9146 4856

Fax: +00852 3010 8510

Email: info@Alleco.com