



Image may be representation.  
See specifications for product details.



## M48T86PC1

Manufacturer Part Number	<b>M48T86PC1</b>
Manufacturer	<b>STMicroelectronics</b>
Allelco Part Number	32D-M48T86PC1
ECAD Model	Request Free CAD Models
Parts Description	IC RTC CLK/CALENDAR PAR 24-DIP
Package	24-DIP Module (0.600", 15.24mm)
Data sheet	<b>M48T86.pdf</b>
RoHs Status	<b>ROHS3 Compliant</b>

**Get a Quote**

M48T86PC1 - STMicroelectronics.New Original in Stock. Download Linear Technology M48T86PC1 datasheet/specifications on AllelcoElec.com.  
Request a quote for M48T86PC1, please send us email: [info@allelco.com](mailto:info@allelco.com)

### Specifications

M48T86PC1 Tech Specifications

M48T86PC1 - STMicroelectronics technical specifications, attributes, parameters

Product Attribute	Attribute Value	Product Attribute	Attribute Value
Manufacturer	STMicroelectronics	Operating Temperature	0°C ~ 70°C
Voltage - Supply, Battery	-	Mounting Type	Through Hole
Voltage - Supply	4.5V ~ 5.5V	Memory Size	114B
Type	Clock/Calendar	Interface	Parallel
Time Format	HH:MM:SS (12/24 hr)	Features	Alarm, Leap Year, NVSRAM, Square Wave Output
Supplier Device Package	24-PCDIP, CAPHAT®	Date Format	YY-MM-DD-dd
Series	-	Current - Timekeeping (Max)	15mA @ 4.5V ~ 5.5V
Package / Case	24-DIP Module (0.600", 15.24mm)	Base Product Number	M48T86
Package	Tube		

### Parts with Similar Specifications

The three parts on the right have similar specifications to STMicroelectronics M48T86PC1

Product Attribute				
Part Number	M48T86PC1	M48T86MH1F	M48T59Y-70PC1	M48T59Y-70PCI
Manufacturer	STMicroelectronics	STMicroelectronics	STMicroelectronics	STMicroelectronics
Interface	Parallel	Parallel	Parallel	-
Mounting Type	Through Hole	Surface Mount	Through Hole	-
Package / Case	24-DIP Module (0.600", 15.24mm)	28-SOP (0.350", 8.89mm Width) with SNAPHAT Sockets	28-DIP Module (0.600", 15.24mm)	-
Voltage - Supply	4.5V ~ 5.5V	4.5V ~ 5.5V	4.5V ~ 5.5V	-
Operating Temperature	0°C ~ 70°C	0°C ~ 70°C	0°C ~ 70°C	-
Current - Timekeeping (Max)	15mA @ 4.5V ~ 5.5V	15mA @ 4.5V ~ 5.5V	3mA @ 4.5V ~ 5.5V	-
Memory Size	114B	114B	-	-
Features	Alarm, Leap Year, NVSRAM, Square Wave Output	Alarm, Leap Year, NVSRAM, Square Wave Output	Alarm, Leap Year, Watchdog Timer	-
Package	Tube	Tape & Reel (TR)	Tube	-
Time Format	HH:MM:SS (12/24 hr)	HH:MM:SS (12/24 hr)	HH:MM:SS (24 hr)	-
Voltage - Supply, Battery	-	-	-	-
Series	-	-	Timekeeper®	-
Supplier Device Package	24-PCDIP, CAPHAT®	28-SOH	28-PCDIP, CAPHAT®	-
Date Format	YY-MM-DD-dd	YY-MM-DD-dd	YY-MM-DD-dd	-
Base Product Number	M48T86	M48T86	M48T59	-
Type	Clock/Calendar	Clock/Calendar	Clock/Calendar	-

### M48T86PC1 Datasheet PDF

Download M48T86PC1 pdf datasheets and STMicroelectronics documentation for M48T86PC1 - STMicroelectronics.

HTML Datasheet



### Customers Also Interested in

#### Recommended Products



**M48T59Y-70PCI**  
STMicroelectronics



**M48Z02-100PC1**  
STMicroelectronics



**M48Z02-150PC1**  
STMicroelectronics  
IC NVSRAM 16KBIT PAR 24PCDIP



**M48T86**  
STMicroelectronics



**M48Z02-200PC1**  
STMicroelectronics  
IC NVSRAM 16KBIT PAR 24PCDIP



**M48T59Y-70PC1U**  
STMicroelectronics

**M48Z02-70PC1**STMicroelectronics  
IC NVSRAM 16KBIT PAR 24PCDIP**M48T59Y-70PC1D**

STMicroelectronics

**M48Z02-120PC1**

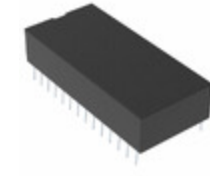
STMicroelectronics

**M48Z08-100PC1**STMicroelectronics  
IC NVSRAM 64KBIT PAR 28PCDIP**M48Z08-150PC1**

STMicroelectronics

**M48Z02-150PCI**

STMicroelectronics

**M48T86MH1F**STMicroelectronics  
IC RTC CLK/CALENDAR PAR 28SOH**M48T59Y-70PC1DS**

STMicroelectronics

**M48Z08-120PC1**

STMicroelectronics

**M48T86MH1**

STMicroelectronics

**M48T86-MH1**

STMicroelectronics

**M48T59Y-70PC1**STMicroelectronics  
IC RTC CLK/CALENDAR PAR 28DIP

## Shipment

### Delivery Time

In-stock items can be shipped within 24 hours. Some parts will be arranged for delivery within 1-2 days from the date all items arrive at our warehouse. And Allelco ships order once a day at about 17:00, except Sunday. Once the goods are shipped, the estimated delivery time depends on the shipping methods and Delivery destination. The table below shows are the logistic time for some common countries.

### Delivery Cost

> Use your express account for shipment if you have one.

> Use our account for the shipment. Refer to the table below for the approximate charges.

(Different time frame / countries / package size has different price.)

### Delivery Method

> Global Common Shipment by DHL / UPS / FedEx / TNT / EMS / SF we support.

> Others more shipping ways, please get in touch with your customer manager.

**Common Countries Logistic Time Reference**

Region	Country	Logistic Time(Day)
America	United States	5
	Brazil	7
Europe	Germany	5
	United Kingdom	4
	Italy	5
Oceania	Australia	6
	New Zealand	7
Asia	India	6
	Japan	7
Middle East	Israel	6

**DHL & FedEx Shipment Charges Reference**

Shipment charges(KG)	Reference DHL(USD\$)
0.00kg-1.00kg	USD\$60.00
1.00kg-2.00kg	USD\$70.00
2.00kg-3.00kg	USD\$80.00

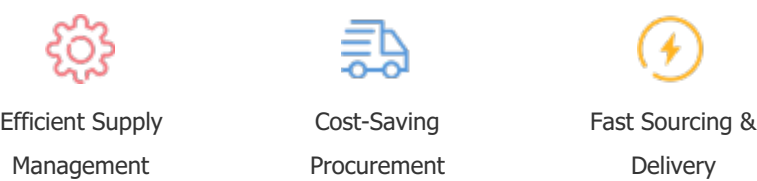
Note: The above table is for reference only. There may have some data bias for the uncontrollable factors.  
Contact us if you have any questions.

### Payment Support

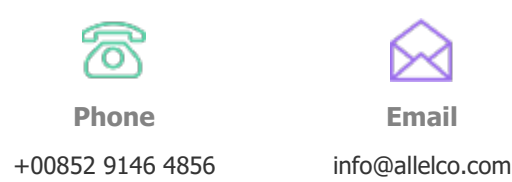
The payment method can be chosen from the methods shown below:  
Wire Transfer (T/T, Bank Transfer), Western Union, Credit card, PayPal.



### Your Faithful Supply Chain Partner -



Contact us if you have any questions.



### Certifications & Memberships



[View More](#)



### Contact us

Address: Flat/Rm C 13/F Harvard Commercial Building 105-111 Thomson Road, Wan Chai, Hong Kong  
Phone: +00852 9146 4856  
Fax: +00852 3010 8510  
Email: info@Allelco.com