

Image may be representation.  
See specifications for product details.



## XC6SLX150-2FGG484I

Manufacturer Part Number	<b>XC6SLX150-2FGG484I</b>
Manufacturer	<b>AMD Xilinx</b>
Allelco Part Number	32D-XC6SLX150-2FGG484I
ECAD Model	Request Free CAD Models
Parts Description	IC FPGA 338 I/O 484FBGA
Package	484-BBGA
Data sheet	XC6SLX150-2FGG484I.pdf
RoHs Status	<b>ROHS3 Compliant</b>

**Get a Quote**

XC6SLX150-2FGG484I - AMD.New Original in Stock. Download Linear Technology XC6SLX150-2FGG484I datasheet/specifications on AllelcoElec.com.  
Request a quote for XC6SLX150-2FGG484I, please send us email: [info@allelco.com](mailto:info@allelco.com)

### Specifications

XC6SLX150-2FGG484I Tech Specifications  
XC6SLX150-2FGG484I - AMD technical specifications, attributes, parameters

Product Attribute	Attribute Value	Product Attribute	Attribute Value
Manufacturer	AMD Xilinx	Operating Temperature	-40°C ~ 100°C (TJ)
Voltage - Supply	1.14V ~ 1.26V	Number of Logic Elements/Cells	147443
Total RAM Bits	4939776	Number of LABs/CLBs	11519
Supplier Device Package	484-FBGA (23x23)	Number of I/O	338
Series	Spartan®-6 LX	Mounting Type	Surface Mount
Package / Case	484-BBGA	Base Product Number	XC6SLX150
Package	Tray		

### Parts with Similar Specifications

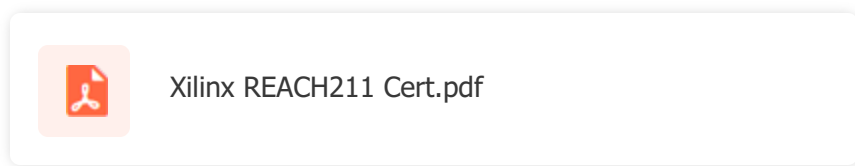
The three parts on the right have similar specifications to AMD XC6SLX150-2FGG484I

Product Attribute				
Part Number	XC6SLX150-2FGG484I	<b>XC6SLX100T-N3FGG484I</b>	<b>XC6SLX150-3FGG484C</b>	<b>XC6SLX150-3FGG676C</b>
Manufacturer	AMD	AMD	AMD	AMD
Total RAM Bits	4939776	4939776	4939776	4939776
Operating Temperature	-40°C ~ 100°C (TJ)	-40°C ~ 100°C (TJ)	0°C ~ 85°C (TJ)	0°C ~ 85°C (TJ)
Package	Tray	Tray	Tray	Tray
Voltage - Supply	1.14V ~ 1.26V	1.14V ~ 1.26V	1.14V ~ 1.26V	1.14V ~ 1.26V
Mounting Type	Surface Mount	Surface Mount	Surface Mount	Surface Mount
Number of Logic Elements/Cells	147443	101261	147443	147443
Number of I/O	338	296	338	498
Base Product Number	XC6SLX150	XC6SLX100	XC6SLX150	XC6SLX150
Supplier Device Package	484-FBGA (23x23)	484-FBGA (23x23)	484-FBGA (23x23)	676-FBGA (27x27)
Package / Case	484-BBGA	484-BBGA	484-BBGA	676-BGA
Series	Spartan®-6 LX	Spartan®-6 LXT	Spartan®-6 LX	Spartan®-6 LX
Number of LABs/CLBs	11519	7911	11519	11519

### XC6SLX150-2FGG484I Datasheet PDF

Download XC6SLX150-2FGG484I pdf datasheets and AMD documentation for XC6SLX150-2FGG484I - AMD.

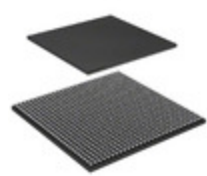
### Environmental Information



### Customers Also Interested in

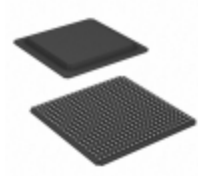
#### Recommended Products

<b>XC6SLX100T-N3FGG484I</b> AMD IC FPGA 296 I/O 484FBGA	<b>XC6SLX150-3FGG484C</b> AMD IC FPGA 338 I/O 484FBGA	<b>XC6SLX150-3FGG676C</b> AMD IC FPGA 498 I/O 676FBGA	<b>XC6SLX150-2FGG676C</b> AMD IC FPGA 498 I/O 676FBGA	<b>XC6SLX100T-3FGG676I</b> AMD IC FPGA 376 I/O 676FBGA	<b>XC6SLX150-3CSG484C</b> AMD IC FPGA 338 I/O 484CSBGA
<b>XC6SLX150-3FGG676C</b> AMD IC FPGA 498 I/O 676FBGA	<b>XC6SLX150-3FGG676I</b> AMD IC FPGA 498 I/O 676FBGA	<b>XC6SLX100T-N3FGG676I</b> AMD IC FPGA 376 I/O 676FBGA	<b>XC6SLX150-2CSG484C</b> AMD IC FPGA 338 I/O 484CSBGA	<b>XC6SLX150-2FGG676I</b> AMD IC FPGA 498 I/O 676FBGA	<b>XC6SLX150-2CSG484I</b> AMD IC FPGA 338 I/O 484CSBGA



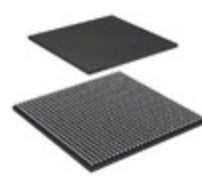
**XC6SLX100T-3FGG900C**

AMD  
IC FPGA 498 I/O 900FBGA



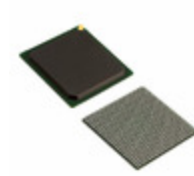
**XC6SLX100T-3FGG484I**

AMD  
IC FPGA 296 I/O 484FBGA



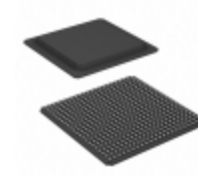
**XC6SLX100T-3FGG900I**

AMD  
IC FPGA 498 I/O 900FBGA



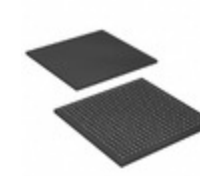
**XC6SLX100T-3FGG676C**

AMD  
IC FPGA 376 I/O 676FBGA



**XC6SLX150-2FGG484C**

AMD  
IC FPGA 338 I/O 484FBGA



**XC6SLX150-3CSG484I**

AMD  
IC FPGA 338 I/O 484CSBGA

## Shipment

### Delivery Time

In-stock items can be shipped within 24 hours. Some parts will be arranged for delivery within 1-2 days from the date all items arrive at our warehouse. And Allelco ships order once a day at about 17:00, except Sunday. Once the goods are shipped, the estimated delivery time depends on the shipping methods and Delivery destination. The table below shows are the logistic time for some common countries.

### Delivery Cost

> Use your express account for shipment if you have one.

> Use our account for the shipment. Refer to the table below for the approximate charges.

(Different time frame / countries / package size has different price.)

### Delivery Method

> Global Common Shipment by DHL / UPS / FedEx / TNT / EMS / SF we support.

> Others more shipping ways, please get in touch with your customer manager.

Common Countries Logistic Time Reference

Region	Country	Logistic Time(Day)
America	United States	5
	Brazil	7
Europe	Germany	5
	United Kingdom	4
	Italy	5
Oceania	Australia	6
	New Zealand	7
Asia	India	6
	Japan	7
Middle East	Israel	6

DHL & FedEx Shipment Charges Reference

Shipment charges(KG)	Reference DHL(USD\$)
0.00kg-1.00kg	USD\$60.00
1.00kg-2.00kg	USD\$70.00
2.00kg-3.00kg	USD\$80.00

Note: The above table is for reference only. There may have some data bias for the uncontrollable factors.  
Contact us if you have any questions.

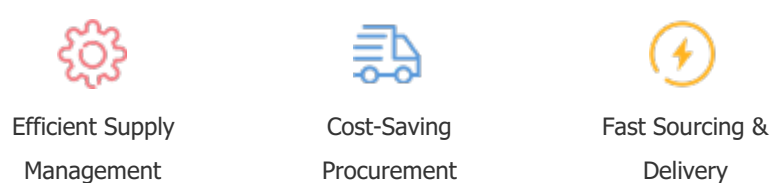
## Payment Support

The payment method can be chosen from the methods shown below:

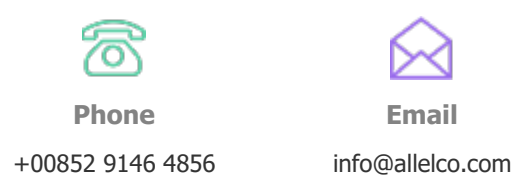
Wire Transfer (T/T, Bank Transfer), Western Union, Credit card, PayPal.



## Your Faithful Supply Chain Partner -



Contact us if you have any questions.



## Certifications & Memberships



[View More](#)