

Image may be representation.  
See specifications for product details.



## AT97SC3205T-X3A13-10

Manufacturer Part Number	<b>AT97SC3205T-X3A13-10</b>
Manufacturer	<b>Microchip Technology</b>
Allelco Part Number	32D-AT97SC3205T-X3A13-10
ECAD Model	Request Free CAD Models
Parts Description	TPM I2C C8 REV F COMM 4.4MM TSSOP
Package	28-TSSOP (0.173", 4.40mm Width)
Data sheet	<b>AT97SC3205T Summary.pdf</b>

**Get a Quote**

AT97SC3205T-X3A13-10 - Microchip Technology. New Original in Stock. Download Linear Technology AT97SC3205T-X3A13-10 datasheet/specifications on AllelcoElec.com. Request a quote for AT97SC3205T-X3A13-10, please send us email: [info@allelco.com](mailto:info@allelco.com)

### Specifications

AT97SC3205T-X3A13-10 Tech Specifications  
AT97SC3205T-X3A13-10 - Microchip Technology technical specifications, attributes, parameters

Product Attribute	Attribute Value	Product Attribute	Attribute Value
Manufacturer	Microchip Technology	Operating Temperature	0°C ~ 70°C
Voltage - Supply	3.3V	Number of I/O	4
Supplier Device Package	28-TSSOP	Mounting Type	Surface Mount
Series	-	Interface	I2C
RAM Size	-	Core Processor	AVR
Program Memory Type	EEPROM	Controller Series	-
Package / Case	28-TSSOP (0.173", 4.40mm Width)	Base Product Number	AT97SC3205
Package	Tape & Reel (TR)	Applications	Trusted Platform Module (TPM)

### Parts with Similar Specifications

The three parts on the right have similar specifications to Microchip Technology AT97SC3205T-X3A13-10

Product Attribute				
Part Number	AT97SC3205T-X3A13-10	AT97SC3205T-U3A14-10	AT97SC3205T-G3M4C20B	AT97SC3205T-X3A14-10
Manufacturer	Microchip Technology	Microchip Technology	Microchip Technology	Microchip Technology
Series	-	-	-	-
Program Memory Type	EEPROM	EEPROM	EEPROM	EEPROM
Base Product Number	AT97SC3205	AT97SC3205T	AT97SC3205	AT97SC3205T
Supplier Device Package	28-TSSOP	28-TSSOP	32-VQFN (4x4)	28-TSSOP
Operating Temperature	0°C ~ 70°C	-40°C ~ 85°C	0°C ~ 70°C	0°C ~ 70°C
Package	Tape & Reel (TR)	Tape & Reel (TR)	Tray	Tape & Reel (TR)
RAM Size	-	-	-	-
Number of I/O	4	4	4	4
Interface	I2C	I2C	I2C	I2C
Voltage - Supply	3.3V	3.3V	3.3V	3.3V
Package / Case	28-TSSOP (0.173", 4.40mm Width)	28-TSSOP (0.173", 4.40mm Width)	32-VFQFN Exposed Pad	28-TSSOP (0.173", 4.40mm Width)
Applications	Trusted Platform Module (TPM)	Trusted Platform Module (TPM)	Trusted Platform Module (TPM)	Trusted Platform Module (TPM)
Core Processor	AVR	AVR	AVR	AVR
Controller Series	-	-	-	-
Mounting Type	Surface Mount	Surface Mount	Surface Mount	Surface Mount

### AT97SC3205T-X3A13-10 Datasheet PDF

Download AT97SC3205T-X3A13-10 pdf datasheets and Microchip Technology documentation for AT97SC3205T-X3A13-10 - Microchip Technology.

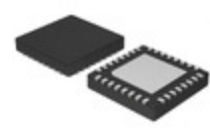
#### Datasheets

[AT97SC3205T Summary.pdf](#)

### Customers Also Interested in

#### Recommended Products

<b>AT97SC3205T-U3A14-10</b>	<b>AT97SC3205T-G3M4C20B</b>				
Microchip Technology IC CRYPTO TPM TSSOP	Microchip Technology PROD FF COM I2C TPM 4X4 32VQFN S	Atmel (Microchip Technology)	AT	Atmel (Microchip Technology)	Microchip Technology IC CRYPTO TPM TSSOP

**AT98SC016-CU-AC**

Atmel (Microchip Technology)

**AT97SC3205T-H3M4C-00**Microchip Technology  
FF IND I2C TPM 4X4 32VQFN CEK**AT97SC3205T-U3A13**

Atmel (Microchip Technology)

**AT9926**

AT

**AT98SC008CT**

Atmel (Microchip Technology)

**AT97SC3205T-U3A1C-20**Microchip Technology  
FF IND I2C TPM 4.4MM TSSOP SEK**AT9917TS-G**Microchip Technology  
IC LED DRIVER CTRLR PWM 24TSSOP**AT97SC3205T-U3A17-AA**

Atmel (Microchip Technology)

**AT9917TS-GVAO**Microchip Technology  
AUTOMOTIVE LED DRIVER IC**AT97SC3205T-A3**

Atmel (Microchip Technology)

**AT97SC3205-X3A15-ABF**Microchip Technology  
CUSTSPEC FF COM SPI TPM 4.4MM TS**AT9802**

AT

## Shipment

### Delivery Time

In-stock items can be shipped within 24 hours. Some parts will be arranged for delivery within 1-2 days from the date all items arrive at our warehouse. And Allelco ships order once a day at about 17:00, except Sunday. Once the goods are shipped, the estimated delivery time depends on the shipping methods and Delivery destination. The table below shows are the logistic time for some common countries.

### Delivery Cost

> Use your express account for shipment if you have one.

> Use our account for the shipment. Refer to the table below for the approximate charges.

(Different time frame / countries / package size has different price.)

### Delivery Method

> Global Common Shipment by DHL / UPS / FedEx / TNT / EMS / SF we support.

> Others more shipping ways, please get in touch with your customer manager.

**Common Countries Logistic Time Reference**

Region	Country	Logistic Time(Day)
America	United States	5
	Brazil	7
Europe	Germany	5
	United Kingdom	4
	Italy	5
Oceania	Australia	6
	New Zealand	7
Asia	India	6
	Japan	7
Middle East	Israel	6

**DHL & FedEx Shipment Charges Reference**

Shipment charges(KG)	Reference DHL(USD\$)
0.00kg-1.00kg	USD\$60.00
1.00kg-2.00kg	USD\$70.00
2.00kg-3.00kg	USD\$80.00

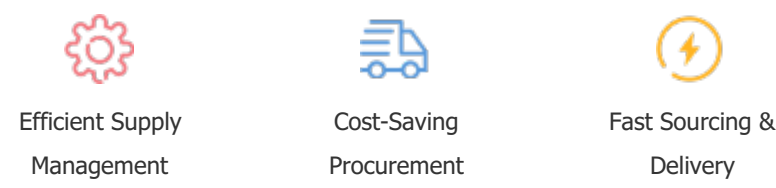
Note: The above table is for reference only. There may have some data bias for the uncontrollable factors.  
Contact us if you have any questions.

## Payment Support

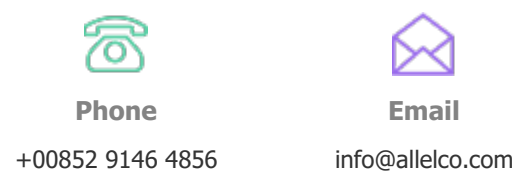
The payment method can be chosen from the methods shown below:  
Wire Transfer (T/T, Bank Transfer), Western Union, Credit card, PayPal.



## Your Faithful Supply Chain Partner -



Contact us if you have any questions.



## Certifications & Memberships



[View More](#)



### Contact us

Address: Flat/Rm C 13/F Harvard Commercial Building 105-111 Thomson Road, Wan Chai, Hong Kong

Phone: +00852 9146 4856

Fax: +00852 3010 8510

Email: info@Allelco.com

Copyright © 2012-2023 AllelcoElec.com. All rights reserved.