

Image may be representation.
See specifications for product details.



MAX6306UK29D3+T

Manufacturer Part Number	MAX6306UK29D3+T
Manufacturer	Maxim Integrated
Allelco Part Number	32D-MAX6306UK29D3+T
ECAD Model	Request Free CAD Models
Parts Description	IC SUPERVISOR 2 CHANNEL SOT23-5
Package	SC-74A, SOT-753
Data sheet	MAX6305-13.pdf
RoHs Status	ROHS3 Compliant

Get a Quote

MAX6306UK29D3+T - Analog Devices Inc./Maxim Integrated.New Original in Stock. Download Linear Technology MAX6306UK29D3+T datasheet/specifications on AllelcoElec.com.
Request a quote for MAX6306UK29D3+T, please send us email: info@allelco.com

Specifications

MAX6306UK29D3+T Tech Specifications
MAX6306UK29D3+T - Analog Devices Inc./Maxim Integrated technical specifications, attributes, parameters

Product Attribute	Attribute Value	Product Attribute	Attribute Value
Manufacturer	Maxim Integrated	Package / Case	SC-74A, SOT-753
Voltage - Threshold	2.93V, Adj	Package	Tape & Reel (TR)
Type	Multi-Voltage Supervisor	Output	Open Drain or Open Collector
Supplier Device Package	SOT-23-5	Operating Temperature	0°C ~ 70°C (TA)
Series	-	Number of Voltages Monitored	2
Reset Timeout	140ms Minimum	Mounting Type	Surface Mount
Reset	Active Low	Base Product Number	MAX6306

Parts with Similar Specifications

The three parts on the right have similar specifications to Analog Devices Inc./Maxim Integrated MAX6306UK29D3+T

Product Attribute				
Part Number	MAX6306UK29D3+T	MAX6306UK31D3	MAX6306UK30D3+T	MAX6306UK44D3+T
Manufacturer	Analog Devices Inc./Maxim Integrated	Analog Devices Inc./Maxim Integrated	Analog Devices Inc./Maxim Integrated	Analog Devices Inc./Maxim Integrated
Reset Timeout	140ms Minimum	140ms Minimum	140ms Minimum	140ms Minimum
Mounting Type	Surface Mount	Surface Mount	Surface Mount	Surface Mount
Base Product Number	MAX6306	MAX6306	MAX6306	MAX6306
Supplier Device Package	SOT-23-5	SOT-23-5	SOT-23-5	SOT-23-5
Series	-	-	-	-
Package / Case	SC-74A, SOT-753	SC-74A, SOT-753	SC-74A, SOT-753	SC-74A, SOT-753
Package	Tape & Reel (TR)	Bulk	Tape & Reel (TR)	Strip
Reset	Active Low	Active Low	Active Low	Active Low
Output	Open Drain or Open Collector	Open Drain or Open Collector	Open Drain or Open Collector	Open Drain or Open Collector
Voltage - Threshold	2.93V, Adj	3.08V, Adj	3V	4.38V, Adj
Operating Temperature	0°C ~ 70°C (TA)	0°C ~ 70°C (TA)	0°C ~ 70°C (TA)	0°C ~ 70°C (TA)
Type	Multi-Voltage Supervisor	Multi-Voltage Supervisor	Multi-Voltage Supervisor	Multi-Voltage Supervisor
Number of Voltages Monitored	2	2	2	2

MAX6306UK29D3+T Datasheet PDF

Download MAX6306UK29D3+T pdf datasheets and Analog Devices Inc./Maxim Integrated documentation for MAX6306UK29D3+T - Analog Devices Inc./Maxim Integrated.

Datasheets

[MAX6305-13.pdf](#)

Environmental Information

[Maxim Integrated REACH.pdf](#)

[Maxim Integrated RoHS Cert.pdf](#)

[Red Phosphorous Certificate.pdf](#)

Part Numbering Guide

[Part Numbering System.pdf](#)

Customers Also Interested in

Recommended Products



MAX6306UK31D3

Analog Devices Inc./Maxim Integrated
IC SUPERVISOR PROGRAMMABLE

MAX6306UK30D3+T

Analog Devices Inc./Maxim Integrated
IC PROGRAM 3.000V RESET SOT23-5

MAX6306UK44D3+T

Analog Devices Inc./Maxim Integrated
IC SUPERVISOR 2 CHANNEL SOT23-5

MAX6306EUK31D3+T

Analog Devices / Maxim Integrated

MAX6306UK44D2+T

Analog Devices Inc./Maxim Integrated
IC PROGRAM 4.380V RESET SOT23-5

MAX6306UK30D1-T

Analog Devices Inc./Maxim Integrated
IC SUPERVISOR 2 CHANNEL SOT23-5

RESET

					
MAX6306UK30D3-T Analog Devices Inc./Maxim Integrated IC SUPERVISOR 2 CHANNEL SOT23-5	MAX6306EUK30D3+T Analog Devices / Maxim Integrated IC SUPERVISOR 2 CHANNEL SOT23-5	MAX6306UK31D4+T Analog Devices Inc./Maxim Integrated IC SUPERVISOR 2 CHANNEL SOT23-5	MAX6306EUK44D3 MAIXM	MAX6306UK30D1+T Analog Devices Inc./Maxim Integrated IC SUPERVISOR 2 CHANNEL SOT23-5	MAX6306UK31D3+T Analog Devices Inc./Maxim Integrated IC SUPERVISOR 2 CHANNEL SOT23-5
					
MAX6306EUK46D3 MAIXM	MAX6306UK28D3+T Analog Devices Inc./Maxim Integrated IC SUPERVISOR 2 CHANNEL SOT23-5	MAX6306UK29D3 Analog Devices Inc./Maxim Integrated IC SUPERVISOR PROGRAMMABLE RESET	MAX6306EUK29D3+T Analog Devices Inc./Maxim Integrated IC SUPERVISOR 2 CHANNEL SOT23-5	MAX6306UK29D3-T Analog Devices Inc./Maxim Integrated IC SUPERVISOR 2 CHANNEL SOT23-5	MAX6306UK29D2+T Analog Devices Inc./Maxim Integrated IC SUPERVISOR 2 CHANNEL SOT23-5

Shipment

Delivery Time

In-stock items can be shipped within 24 hours. Some parts will be arranged for delivery within 1-2 days from the date all items arrive at our warehouse. And Allelco ships order once a day at about 17:00, except Sunday. Once the goods are shipped, the estimated delivery time depends on the shipping methods and Delivery destination. The table below shows are the logistic time for some common countries.

Delivery Cost

> Use your express account for shipment if you have one.

> Use our account for the shipment. Refer to the table below for the approximate charges.

(Different time frame / countries / package size has different price.)

Delivery Method

> Global Common Shipment by DHL / UPS / FedEx / TNT / EMS / SF we support.

> Others more shipping ways, please get in touch with your customer manager.

Common Countries Logistic Time Reference		
Region	Country	Logistic Time(Day)
America	United States	5
	Brazil	7
Europe	Germany	5
	United Kingdom	4
	Italy	5
Oceania	Australia	6
	New Zealand	7
Asia	India	6
	Japan	7
Middle East	Israel	6

DHL & FedEx Shipment Charges Reference	
Shipment charges(KG)	Reference DHL(USD\$)
0.00kg-1.00kg	USD\$60.00
1.00kg-2.00kg	USD\$70.00
2.00kg-3.00kg	USD\$80.00

Note: The above table is for reference only. There may have some data bias for the uncontrollable factors.

Contact us if you have any questions.

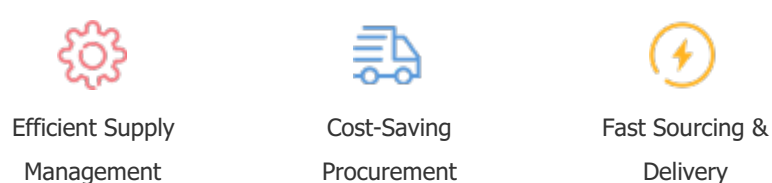
Payment Support

The payment method can be chosen from the methods shown below:

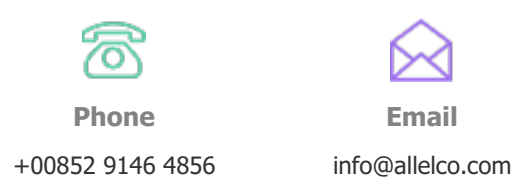
Wire Transfer (T/T, Bank Transfer), Western Union, Credit card, PayPal.



Your Faithful Supply Chain Partner -



Contact us if you have any questions.



Certifications & Memberships



View More