

Image may be representation.  
See specifications for product details.



## MAX4236EUT+T

Manufacturer Part Number	<b>MAX4236EUT+T</b>
Manufacturer	<b>Maxim Integrated</b>
Allelco Part Number	32D-MAX4236EUT+T
ECAD Model	Request Free CAD Models
Parts Description	IC OPAMP GP 1 CIRCUIT SOT6
Package	SOT-23-6
Data sheet	MAX4236EUT+T.pdf
RoHs Status	<b>ROHS3 Compliant</b>

**Get a Quote**

MAX4236EUT+T - Analog Devices Inc./Maxim Integrated.New Original in Stock. Download Linear Technology MAX4236EUT+T datasheet/specifications on AllelcoElec.com.  
Request a quote for MAX4236EUT+T, please send us email: [info@allelco.com](mailto:info@allelco.com)

## Specifications

MAX4236EUT+T Tech Specifications  
MAX4236EUT+T - Analog Devices Inc./Maxim Integrated technical specifications, attributes, parameters

Product Attribute	Attribute Value	Product Attribute	Attribute Value
Manufacturer	Maxim Integrated	Output Type	Rail-to-Rail
Voltage - Supply Span (Min)	2.4 V	Operating Temperature	-40°C ~ 85°C
Voltage - Supply Span (Max)	5.5 V	Number of Circuits	1
Voltage - Input Offset	5 µV	Mounting Type	Surface Mount
Supplier Device Package	SOT-6	Gain Bandwidth Product	1.7 MHz
Slew Rate	0.3V/µs	Current - Supply	350µA
Series	-	Current - Input Bias	1 pA
Package / Case	SOT-23-6	Base Product Number	MAX4236
Package	Tape & Reel (TR)	Amplifier Type	General Purpose

## Parts with Similar Specifications

The three parts on the right have similar specifications to Analog Devices Inc./Maxim Integrated MAX4236EUT+T

Product Attribute				
Part Number	MAX4236EUT+T	MAX4238ASA+T	MAX4234AUD/V+T	MAX4236BESA
Manufacturer	Analog Devices Inc./Maxim Integrated	Analog Devices Inc./Maxim Integrated	Analog Devices Inc./Maxim Integrated	Analog Devices Inc./Maxim Integrated
Current - Input Bias	1 pA	1 pA	1 pA	1 pA
Mounting Type	Surface Mount	Surface Mount	Surface Mount	Surface Mount
Voltage - Supply Span (Max)	5.5 V	5.5 V	5.5 V	5.5 V
Slew Rate	0.3V/µs	0.35V/µs	10V/µs	0.3V/µs
Operating Temperature	-40°C ~ 85°C	-40°C ~ 125°C	-40°C ~ 125°C	-40°C ~ 85°C
Series	-	-	-	-
Number of Circuits	1	1	4	1
Gain Bandwidth Product	1.7 MHz	1 MHz	10 MHz	1.7 MHz
Amplifier Type	General Purpose	General Purpose	CMOS	General Purpose
Supplier Device Package	SOT-6	8-SOIC	14-TSSOP	8-SOIC
Voltage - Supply Span (Min)	2.4 V	2.7 V	2.7 V	2.4 V
Voltage - Input Offset	5 µV	0.1 µV	850 µV	5 µV
Base Product Number	MAX4236	MAX4238	MAX4234	MAX4236
Package / Case	SOT-23-6	8-SOIC (0.154", 3.90mm Width)	14-TSSOP (0.173", 4.40mm Width)	8-SOIC (0.154", 3.90mm Width)
Output Type	Rail-to-Rail	Single Ended, Rail-to-Rail	Rail-to-Rail	Rail-to-Rail
Current - Supply	350µA	600µA	1.2mA (x4 Channels)	350µA
Package	Tape & Reel (TR)	Tape & Reel (TR)	Tape & Reel (TR)	Tube

## MAX4236EUT+T Datasheet PDF

Download MAX4236EUT+T pdf datasheets and Analog Devices Inc./Maxim Integrated documentation for MAX4236EUT+T - Analog Devices Inc./Maxim Integrated.

### Environmental Information

Maxim Integrated REACH.pdf

Maxim Integrated RoHS Cert.pdf

### Part Numbering Guide

Part Numbering System.pdf

### Application Notes

Bipolar DC-Voltage Detector Offers Sensitivity and.pdf

Precision Current-Sink/Source Circuits Configure a.pdf

## Customers Also Interested in

## Recommended Products



### MAX4238ASA+T

Analog Devices Inc./Maxim Integrated  
IC OPAMP GP 1 CIRCUIT 8SOIC

### MAX4234AUD/V

Analog Devices / Maxim Integrated

### MAX4236EUT

Analog Devices / Maxim Integrated

### MAX4234AUD/V+T

Analog Devices Inc./Maxim Integrated  
IC CMOS 4 CIRCUIT 14TSSOP

### MAX4236BESA

Analog Devices Inc./Maxim Integrated  
IC OPAMP GP 1 CIRCUIT 8SOIC

### MAX4236AESA+T

Analog Devices Inc./Maxim Integrated  
IC OPAMP GP 1 CIRCUIT 8SOIC



### MAX4236EUT-T

Analog Devices Inc./Maxim Integrated  
IC OPAMP GP 1 CIRCUIT SOT6



### MAX4238ASA

Analog Devices Inc./Maxim Integrated  
IC OPAMP GP 1 CIRCUIT 8SOIC



### MAX4238AUT

Analog Devices Inc./Maxim Integrated  
IC OPAMP GP 1 CIRCUIT SOT23-6



### MAX4236AEUA+

Analog Devices Inc./Maxim Integrated  
IC OPAMP GP 1 CIRCUIT 8UMAX



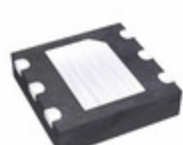
### MAX4236AEUA+T

Analog Devices Inc./Maxim Integrated  
IC OPAMP GP 1 CIRCUIT 8UMAX



### MAX4238ASA+

Analog Devices Inc./Maxim Integrated  
IC OPAMP GP 1 CIRCUIT 8SOIC



### MAX4238ATT+T

Analog Devices Inc./Maxim Integrated  
IC OPAMP GP 1 CIRCUIT 6TDFN



### MAX4237EUT+T

Analog Devices Inc./Maxim Integrated  
IC OPAMP GP 1 CIRCUIT SOT6



### MAX4234AUD/V+

Analog Devices Inc./Maxim Integrated  
IC CMOS 4 CIRCUIT 14TSSOP



### MAX4234AUD+

Analog Devices Inc./Maxim Integrated  
IC CMOS 4 CIRCUIT 14TSSOP



### MAX4234AUD+T

Analog Devices Inc./Maxim Integrated  
IC CMOS 4 CIRCUIT 14TSSOP



### MAX4237AESA+

Analog Devices Inc./Maxim Integrated  
IC OPAMP GP 1 CIRCUIT 8SOIC

## Shipment

### Delivery Time

In-stock items can be shipped within 24 hours. Some parts will be arranged for delivery within 1-2 days from the date all items arrive at our warehouse. And Allelco ships order once a day at about 17:00, except Sunday. Once the goods are shipped, the estimated delivery time depends on the shipping methods and Delivery destination. The table below shows are the logistic time for some common countries.

### Delivery Cost

- > Use your express account for shipment if you have one.
  - > Use our account for the shipment. Refer to the table below for the approximate charges.
- (Different time frame / countries / package size has different price.)

### Delivery Method

- > Global Common Shipment by DHL / UPS / FedEx / TNT / EMS / SF we support.
- > Others more shipping ways, please get in touch with your customer manager.

Common Countries Logistic Time Reference

Region	Country	Logistic Time(Day)
America	United States	5
	Brazil	7
Europe	Germany	5
	United Kingdom	4
	Italy	5
Oceania	Australia	6
	New Zealand	7
Asia	India	6
	Japan	7
Middle East	Israel	6

DHL & FedEx Shipment Charges Reference

Shipment charges(KG)	Reference DHL(USD\$)
0.00kg-1.00kg	USD\$60.00
1.00kg-2.00kg	USD\$70.00
2.00kg-3.00kg	USD\$80.00

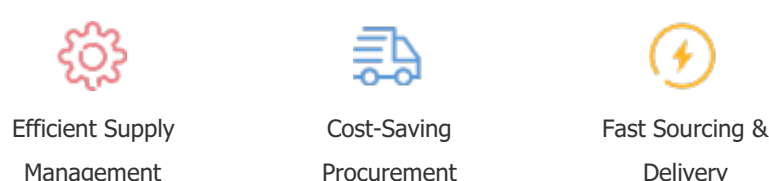
Note: The above table is for reference only. There may have some data bias for the uncontrollable factors.  
Contact us if you have any questions.

## Payment Support

The payment method can be chosen from the methods shown below:  
Wire Transfer (T/T, Bank Transfer), Western Union, Credit card, PayPal.



## Your Faithful Supply Chain Partner -



Contact us if you have any questions.



## Certifications & Memberships



[View More](#)