

Image may be representation.
See specifications for product details.



ADR392BUJZ-R2

Manufacturer Part Number	ADR392BUJZ-R2
Manufacturer	Analog Devices, Inc.
Allelco Part Number	32D-ADR392BUJZ-R2
ECAD Model	PCB Symbol, Footprint & 3D Mode
Parts Description	IC VREF SERIES 0.12% TSOT5
Package	SOT-23-5 Thin, TSOT-23-5
Data sheet	Cylindrical Battery Holders.pdf

Get a Quote

ADR392BUJZ-R2 - Analog Devices Inc..New Original in Stock. Download Linear Technology ADR392BUJZ-R2 datasheet/specifications on AllelcoElec.com.
Request a quote for ADR392BUJZ-R2, please send us email: info@allelco.com

Specifications

ADR392BUJZ-R2 Tech Specifications
ADR392BUJZ-R2 - Analog Devices Inc. technical specifications, attributes, parameters

Product Attribute	Attribute Value	Product Attribute	Attribute Value
Manufacturer	Analog Devices, Inc.	Package	Tape & Reel (TR)
Voltage - Output (Min/Fixed)	4.096V	Output Type	Fixed
Voltage - Input	4.3V ~ 15V	Operating Temperature	-40°C ~ 125°C (TA)
Tolerance	±0.12%	Noise - 10Hz to 10kHz	-
Temperature Coefficient	9ppm/°C	Noise - 0.1Hz to 10Hz	7µVp-p
Supplier Device Package	TSOT-23-5	Mounting Type	Surface Mount
Series	ADR39	Current - Supply	140µA
Reference Type	Series	Current - Output	5 mA
Package / Case	SOT-23-5 Thin, TSOT-23-5	Base Product Number	ADR392

Parts with Similar Specifications

The three parts on the right have similar specifications to Analog Devices Inc. ADR392BUJZ-R2

Product Attribute				
Part Number	ADR392BUJZ-R2	ADR392AUJZ-R2	ADR391BUJZ-R2	ADR395AUJZ-REEL7
Manufacturer	Analog Devices Inc.	Analog Devices Inc.	Analog Devices Inc.	Analog Devices Inc.
Voltage - Input	4.3V ~ 15V	4.3V ~ 15V	2.8V ~ 15V	5.3V ~ 15V
Current - Output	5 mA	5 mA	5 mA	5 mA
Reference Type	Series	Series	Series	Series
Operating Temperature	-40°C ~ 125°C (TA)	-40°C ~ 125°C (TA)	-40°C ~ 125°C (TA)	-40°C ~ 125°C (TA)
Package	Tape & Reel (TR)	Tape & Reel (TR)	Tape & Reel (TR)	Tape & Reel (TR)
Current - Supply	140µA	140µA	140µA	140µA
Series	ADR39	ADR39	ADR39	ADR39
Voltage - Output (Min/Fixed)	4.096V	4.096V	2.5V	5V
Mounting Type	Surface Mount	Surface Mount	Surface Mount	Surface Mount
Noise - 10Hz to 10kHz	-	-	-	-
Output Type	Fixed	Fixed	Fixed	Fixed
Temperature Coefficient	9ppm/°C	25ppm/°C	9ppm/°C	25ppm/°C
Noise - 0.1Hz to 10Hz	7µVp-p	7µVp-p	5µVp-p	8µVp-p
Tolerance	±0.12%	±0.15%	±0.16%	±0.12%
Base Product Number	ADR392	ADR392	ADR391	ADR395
Package / Case	SOT-23-5 Thin, TSOT-23-5	SOT-23-5 Thin, TSOT-23-5	SOT-23-5 Thin, TSOT-23-5	SOT-23-5 Thin, TSOT-23-5
Supplier Device Package	TSOT-23-5	TSOT-23-5	TSOT-23-5	TSOT-23-5

ADR392BUJZ-R2 Datasheet PDF

Download ADR392BUJZ-R2 pdf datasheets and Analog Devices Inc. documentation for ADR392BUJZ-R2 - Analog Devices Inc..

Datasheets

[Cylindrical Battery Holders.pdf](#)

Other Related Documents

[Tape and Reel Packaging.pdf](#)

PCN Part Status Change

[Sm Reel Obs 9/Mar/2017.pdf](#)

Customers Also Interested in

Recommended Products



ADR392AUJZ-R2

Analog Devices Inc.
IC VREF SERIES 0.15% TSOT5



ADR391BUJZ-R2

Analog Devices Inc.
IC VREF SERIES 0.16% TSOT5



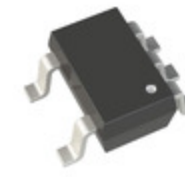
ADR392AUJZ

ADI (Analog Devices, Inc.)



ADR391BUJZ

ADI (Analog Devices, Inc.)



ADR395AUJZ-REEL7

Analog Devices Inc.
IC VREF SERIES 0.12% TSOT5



ADR392ART

ADI (Analog Devices, Inc.)



ADR392BUJZ-REEL7

Analog Devices Inc.
IC VREF SERIES 0.12% TSOT5



ADR392ART-REEL7

Analog Devices Inc.
IC VREF SRS PREC 4.096V SOT23-5



ADR420ARM

Analog Devices Inc.
IC VREF SERIES PREC 2.048V 8MSOP



ADR392BUJZ

ADI (Analog Devices, Inc.)



ADR392WBUJZ-R7

Analog Devices Inc.
IC VREF SERIES 0.12% TSOT5



ADR392WBUJZ

ADI (Analog Devices, Inc.)



ADR420ARMZ

Analog Devices Inc.
IC VREF SERIES 0.15% 8MSOP



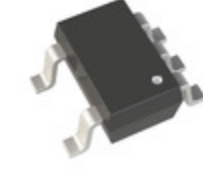
ADR395AUJZ-R2

Analog Devices Inc.
IC VREF SERIES 0.12% TSOT5



ADR392AUJ-REZ

ADI (Analog Devices, Inc.)



ADR392AUJZ-REEL7

Analog Devices Inc.
IC VREF SERIES 0.15% TSOT5



ADR395BUJZ-REEL7

Analog Devices Inc.
IC VREF SERIES 0.1% TSOT5



ADR391BUJZ-REEL7

Analog Devices Inc.
IC VREF SERIES 0.16% TSOT5

Shipment

Delivery Time

In-stock items can be shipped within 24 hours. Some parts will be arranged for delivery within 1-2 days from the date all items arrive at our warehouse. And Allelco ships order once a day at about 17:00, except Sunday. Once the goods are shipped, the estimated delivery time depends on the shipping methods and Delivery destination. The table below shows are the logistic time for some common countries.

Delivery Cost

> Use your express account for shipment if you have one.

> Use our account for the shipment. Refer to the table below for the approximate charges.

(Different time frame / countries / package size has different price.)

Delivery Method

> Global Common Shipment by DHL / UPS / FedEx / TNT / EMS / SF we support.

> Others more shipping ways, please get in touch with your customer manager.

Common Countries Logistic Time Reference		
Region	Country	Logistic Time(Day)
America	United States	5
	Brazil	7
Europe	Germany	5
	United Kingdom	4
	Italy	5
Oceania	Australia	6
	New Zealand	7
Asia	India	6
	Japan	7
Middle East	Israel	6

DHL & FedEx Shipment Charges Reference	
Shipment charges(KG)	Reference DHL(USD\$)
0.00kg-1.00kg	USD\$60.00
1.00kg-2.00kg	USD\$70.00
2.00kg-3.00kg	USD\$80.00

Note: The above table is for reference only. There may have some data bias for the uncontrollable factors.

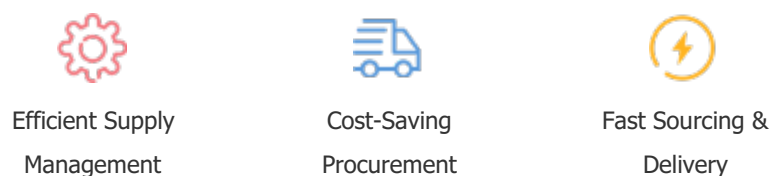
Contact us if you have any questions.

Payment Support

The payment method can be chosen from the methods shown below:
Wire Transfer (T/T, Bank Transfer), Western Union, Credit card,
PayPal.



Your Faithful Supply Chain Partner -



Contact us if you have any questions.



Certifications & Memberships



View More



Contact us

Address: Flat/Rm C 13/F Harvard Commercial Building 105-111 Thomson Road, Wan Chai, Hong Kong
Phone: +00852 9146 4856
Fax: +00852 3010 8510
Email: info@Allelco.com

Copyright © 2012-2023 AllelcoElec.com. All rights reserved.