



Image may be representation.  
See specifications for product details.



## ADUM2201BRWZ

Manufacturer Part Number	<b>ADUM2201BRWZ</b>
Manufacturer	<b>Analog Devices, Inc.</b>
Allelco Part Number	32D-ADUM2201BRWZ
ECAD Model	PCB Symbol, Footprint & 3D Mode
Parts Description	DGTL ISO 5000VRMS 2CH GP 16SOIC
Package	16-SOIC (0.295", 7.50mm Width)
Data sheet	<b>Cylindrical Battery Holders.pdf</b>
RoHs Status	<b>ROHS3 Compliant</b>

**Get a Quote**

ADUM2201BRWZ - Analog Devices Inc..New Original in Stock. Download Linear Technology ADUM2201BRWZ datasheet/specifications on AllelcoElec.com.  
Request a quote for ADUM2201BRWZ, please send us email: [info@allelco.com](mailto:info@allelco.com)

## Specifications

ADUM2201BRWZ Tech Specifications

ADUM2201BRWZ - Analog Devices Inc. technical specifications, attributes, parameters

Product Attribute	Attribute Value	Product Attribute	Attribute Value
Manufacturer	Analog Devices, Inc.	Package	Tube
Voltage - Supply	3V ~ 5.5V	Operating Temperature	-40°C ~ 105°C
Voltage - Isolation	5000Vrms	Number of Channels	2
Type	General Purpose	Mounting Type	Surface Mount
Technology	Magnetic Coupling	Isolated Power	No
Supplier Device Package	16-SOIC	Inputs - Side 1/Side 2	1/1
Series	iCoupler®	Data Rate	10Mbps
Rise / Fall Time (Typ)	2.5ns, 2.5ns	Common Mode Transient Immunity (Min)	25kV/µs
Pulse Width Distortion (Max)	3ns	Channel Type	Unidirectional
Propagation Delay tpLH / tpHL (Max)	50ns, 50ns	Base Product Number	ADUM2201
Package / Case	16-SOIC (0.295", 7.50mm Width)		

## Parts with Similar Specifications

The three parts on the right have similar specifications to Analog Devices Inc. ADUM2201BRWZ

Product Attribute				
Part Number	ADUM2201BRWZ	<b>ADUM2250ARIZ</b>	<b>ADUM2210TRWZ-RL</b>	<b>ADUM210N0BRIZ</b>
Manufacturer	Analog Devices Inc.	Analog Devices Inc.	Analog Devices Inc.	Analog Devices Inc.
Supplier Device Package	16-SOIC	16-SOIC-IC	16-SOIC	8-SOIC-IC
Propagation Delay tpLH / tpHL (Max)	50ns, 50ns	-	50ns, 50ns	13ns, 13ns
Inputs - Side 1/Side 2	1/1	2/2	2/0	1/0
Isolated Power	No	No	No	No
Package / Case	16-SOIC (0.295", 7.50mm Width)	16-SOIC (0.295", 7.50mm Width)	16-SOIC (0.295", 7.50mm Width)	8-SOIC (0.295", 7.50mm Width)
Channel Type	Unidirectional	Bidirectional	Unidirectional	Unidirectional
Package	Tube	Tube	Tape & Reel (TR)	Tube
Voltage - Supply	3V ~ 5.5V	3V ~ 5.5V	3V ~ 5.5V	1.7V ~ 5.5V
Number of Channels	2	2	2	1
Operating Temperature	-40°C ~ 105°C	-40°C ~ 105°C	-40°C ~ 125°C	-40°C ~ 125°C
Common Mode Transient Immunity (Min)	25kV/µs	25kV/µs	25kV/µs	75kV/µs
Voltage - Isolation	5000Vrms	5000Vrms	5000Vrms	5000Vrms
Base Product Number	ADUM2201	ADUM2250	ADUM2210	ADUM210
Mounting Type	Surface Mount	Surface Mount	Surface Mount	Surface Mount
Technology	Magnetic Coupling	Magnetic Coupling	Magnetic Coupling	Magnetic Coupling
Data Rate	10Mbps	1Mbps	10Mbps	150Mbps
Series	iCoupler®	iCoupler®	iCoupler®	iCoupler®
Type	General Purpose	I <sup>2</sup> C	General Purpose	General Purpose
Rise / Fall Time (Typ)	2.5ns, 2.5ns	-	2.5ns, 2.5ns	2.5ns, 2.5ns
Pulse Width Distortion (Max)	3ns	145ns, 85ns	3ns	3ns

## ADUM2201BRWZ Datasheet PDF

Download ADUM2201BRWZ pdf datasheets and Analog Devices Inc. documentation for ADUM2201BRWZ - Analog Devices Inc..

### Datasheets

[Cylindrical Battery Holders.pdf](#)

### PCN Assembly/Origin

[2.73KHz.pdf](#)

 Cylindrical Battery Holders.pdf

## Customers Also Interested in

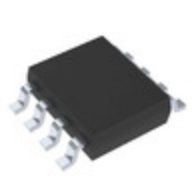
### Recommended Products



**ADUM2250ARIZ**  
Analog Devices Inc.  
DGT ISOL 5000VRMS 2CH I2C 16SOIC



**ADUM2210TRWZ-RL**  
Analog Devices Inc.  
DGTL ISO 5000VRMS 2CH GP 16SOIC



**ADUM210N0BRIZ**  
Analog Devices Inc.  
DGTL ISO 5000VRMS 1CH GP 8SOIC



**ADUM2211WTRWZ-RL**  
Analog Devices Inc.  
DGTL ISO 5000VRMS 2CH GP 16SOIC



**ADUM2200ARWZ-RL**  
Analog Devices Inc.  
DGTL ISO 5000VRMS 2CH GP 16SOIC



**ADUM2210SRWZ**  
Analog Devices Inc.  
DGTL ISO 5000VRMS 2CH GP 16SOIC



**ADUM2200ARIZ-RL**  
Analog Devices Inc.  
DGTL ISO 5000VRMS 2CH GP 16SOIC



**ADUM221N1BRWZ**  
Analog Devices Inc.  
DGTL ISO 5000VRMS 2CH GP 16SOIC



**ADUM2201ARWZ**  
Analog Devices Inc.  
DGTL ISO 5000VRMS 2CH GP 16SOIC



**ADUM2200BRWZ**  
Analog Devices Inc.  
DGTL ISO 5000VRMS 2CH GP 16SOIC



**ADUM2200BRWZ-RL**  
Analog Devices Inc.  
DGTL ISO 5000VRMS 2CH GP 16SOIC



**ADUM2201BRWZ-RL**  
Analog Devices Inc.  
DGTL ISO 5000VRMS 2CH GP 16SOIC



**ADUM2211TRIZ-RL**  
Analog Devices Inc.  
DGTL ISO 5000VRMS 2CH GP 16SOIC



**ADUM2200ARWZ**  
Analog Devices Inc.  
DGTL ISO 5000VRMS 2CH GP 16SOIC



**ADUM2201ARWZ-RL**  
Analog Devices Inc.  
DGTL ISO 5000VRMS 2CH GP 16SOIC



**ADUM2201ARIZ-RL**  
Analog Devices Inc.  
DGTL ISO 5000VRMS 2CH GP 16SOIC



**ADUM163N1BRZ-RL7**  
Analog Devices Inc.  
DGTL ISO 3000VRMS 6CH GP 16SOIC



**ADUM221N0WBRWZ**  
Analog Devices Inc.  
DGTL ISO 5000VRMS 2CH GP 16SOIC

## Shipment

### Delivery Time

In-stock items can be shipped within 24 hours. Some parts will be arranged for delivery within 1-2 days from the date all items arrive at our warehouse. And Allelco ships order once a day at about 17:00, except Sunday. Once the goods are shipped, the estimated delivery time depends on the shipping methods and Delivery destination. The table below shows are the logistic time for some common countries.

### Delivery Cost

- > Use your express account for shipment if you have one.
  - > Use our account for the shipment. Refer to the table below for the approximate charges.
- (Different time frame / countries / package size has different price.)

### Delivery Method

- > Global Common Shipment by DHL / UPS / FedEx / TNT / EMS / SF we support.
- > Others more shipping ways, please get in touch with your customer manager.

Common Countries Logistic Time Reference

Region	Country	Logistic Time(Day)
America	United States	5
	Brazil	7
Europe	Germany	5
	United Kingdom	4
	Italy	5
Oceania	Australia	6
	New Zealand	7
Asia	India	6
	Japan	7
Middle East	Israel	6

DHL & FedEx Shipment Charges Reference

Shipment charges(KG)	Reference DHL(USD\$)
0.00kg-1.00kg	USD\$60.00
1.00kg-2.00kg	USD\$70.00
2.00kg-3.00kg	USD\$80.00

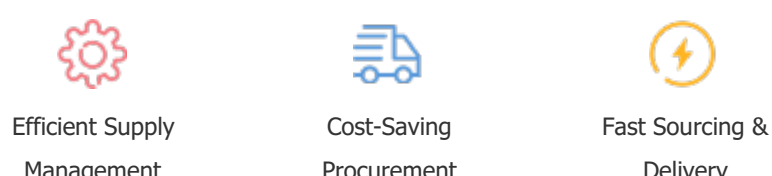
Note: The above table is for reference only. There may have some data bias for the uncontrollable factors.  
Contact us if you have any questions.

### Payment Support

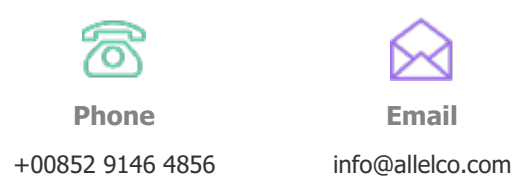
The payment method can be chosen from the methods shown below:  
Wire Transfer (T/T, Bank Transfer), Western Union, Credit card, PayPal.



### Your Faithful Supply Chain Partner -



Contact us if you have any questions.



### Certifications & Memberships



[View More](#)

### Contact us

Address: Flat/Rm C 13/F Harvard Commercial Building 105-111 Thomson Road, Wan Chai, Hong Kong  
Phone: +00852 9146 4856  
Fax: +00852 3010 8510  
Email: info@Allelco.com