



Image may be representation.
See specifications for product details.



LM2931AD50R

Manufacturer Part Number	LM2931AD50R
Manufacturer	STMicroelectronics
Allelco Part Number	32D-LM2931AD50R
ECAD Model	PCB Symbol, Footprint & 3D Model
Parts Description	IC REG LINEAR 5V 100MA 8SO
Package	8-SOIC (0.154", 3.90mm Width)
Data sheet	LM2931 Datasheet.pdf
RoHs Status	ROHS3 Compliant

Get a Quote

LM2931AD50R - STMicroelectronics.New Original in Stock. Download Linear Technology LM2931AD50R datasheet/specifications on AllelcoElec.com.
Request a quote for LM2931AD50R, please send us email: info@allelco.com

Specifications

LM2931AD50R Tech Specifications

LM2931AD50R - STMicroelectronics technical specifications, attributes, parameters

Product Attribute	Attribute Value	Product Attribute	Attribute Value
Manufacturer	STMicroelectronics	Output Type	Fixed
Voltage Dropout (Max)	0.6V @ 100mA	Output Configuration	Positive
Voltage - Output (Min/Fixed)	5V	Operating Temperature	-40°C ~ 125°C (TJ)
Voltage - Output (Max)	-	Number of Regulators	1
Voltage - Input (Max)	26V	Mounting Type	Surface Mount
Supplier Device Package	8-SOIC	Current - Supply (Max)	30 mA
Series	-	Current - Quiescent (Iq)	1 mA
Protection Features	Current Limit, Thermal Shutdown	Current - Output	100mA
Package / Case	8-SOIC (0.154", 3.90mm Width)	Control Features	-
Package	Tape & Reel (TR)	Base Product Number	LM2931
PSRR	75dB (120Hz)		

Parts with Similar Specifications

The three parts on the right have similar specifications to STMicroelectronics LM2931AD50R

Product Attribute				
Part Number	LM2931AD50R	LM2931AMX-5.0	LM2931CS	LM2931CDR2G
Manufacturer	STMicroelectronics	Texas Instruments	Texas Instruments	onsemi
Package / Case	8-SOIC (0.154", 3.90mm Width)	8-SOIC (0.154", 3.90mm Width)	TO-263-6, D ² Pak (5 Leads + Tab), TO-263BA	8-SOIC (0.154", 3.90mm Width)
Current - Quiescent (Iq)	1 mA	15 mA	1 mA	1 mA
Current - Supply (Max)	30 mA	30 mA	15 mA	6 mA
Mounting Type	Surface Mount	Surface Mount	Surface Mount	Surface Mount
Control Features	-	-	-	-
Package	Tape & Reel (TR)	Tape & Reel (TR)	Tube	Tape & Reel (TR)
Base Product Number	LM2931	LM2931	LM2931	LM2931
PSRR	75dB (120Hz)	80dB (120Hz)	55dB (120Hz)	-
Series	-	-	-	-
Voltage - Output (Max)	-	-	24V	29.5V
Current - Output	100mA	100mA	100mA	100mA
Voltage Dropout (Max)	0.6V @ 100mA	0.3V @ 100mA	0.3V @ 100mA	0.6V @ 100mA
Output Type	Fixed	Fixed	Adjustable	Adjustable
Output Configuration	Positive	Positive	Positive	Positive
Voltage - Input (Max)	26V	26V	26V	26V
Protection Features	Current Limit, Thermal Shutdown	Over Temperature, Reverse Polarity, Short Circuit	Over Temperature, Reverse Polarity, Short Circuit	Over Current, Over Temperature
Operating Temperature	-40°C ~ 125°C (TJ)	-40°C ~ 85°C	-40°C ~ 85°C	-40°C ~ 125°C
Number of Regulators	1	1	1	1
Supplier Device Package	8-SOIC	8-SOIC	DDPAK/TO-263-5	8-SOIC
Voltage - Output (Min/Fixed)	5V	5V	3V	2.7V

LM2931AD50R Datasheet PDF

Download LM2931AD50R pdf datasheets and STMicroelectronics documentation for LM2931AD50R - STMicroelectronics.

PCN Packaging

Mult Dev Inner Pkg Chg 30/Oct/2019.pdf

Cover Tape 07/Sep/2019.pdf

PCN Assembly/Origin

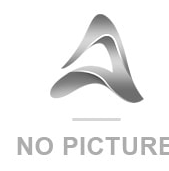
Mult Dev Assembly Site Add 24/May/2018.pdf



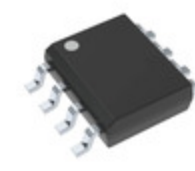
LM2931 Datasheet.pdf

Customers Also Interested in

Recommended Products

**LM2931AMX-5.0**Texas Instruments
IC REG LINEAR 5V 100MA 8SOIC**LM2931CS**Texas Instruments
IC REG LIN POS ADJ 100MA DDPK**LM2931CDR2G**onsemi
IC REG LIN POS ADJ 100MA 8SOIC**LM2931AZ-5.0RAG**onsemi
IC REG LINEAR 5V 100MA TO92-3**LM29150RS-3.3**

HTC

**LM2931MX-5.0**Texas Instruments
IC REG LINEAR 5V 100MA 8SOIC**LM29150RS-5.0**

HTC

**LM29302R**

HTC

**LM29152RS**

HTC

**LM2931D-R**STMicroelectronics
IC REG LIN POS ADJ 100MA 8SOIC**LM2917M-8**Texas Instruments
IC F/V CONV 10KHZ 8SOIC**LM2931AZ-5.0**onsemi
IC REG LINEAR 5V 100MA TO92-3**LM2931AD-5.0R2G**onsemi
IC REG LINEAR 5V 100MA 8SOIC**LM2931CD2TG**onsemi
IC REG LIN POS ADJ 100MA D2PAK-5**LM2931CT**onsemi
IC REG LIN POS ADJ 100MA TO220-5**LM2930T-5.0**Texas Instruments
IC REG LINEAR 5V 150MA TO220-3**LM2931D-5.0R2G**onsemi
IC REG LINEAR 5V 100MA 8SOIC**LM2931ACDR2G**onsemi
IC REG LIN POS ADJ 100MA 8SOIC

Shipment

Delivery Time

In-stock items can be shipped within 24 hours. Some parts will be arranged for delivery within 1-2 days from the date all items arrive at our warehouse. And Allelco ships order once a day at about 17:00, except Sunday. Once the goods are shipped, the estimated delivery time depends on the shipping methods and Delivery destination. The table below shows are the logistic time for some common countries.

Delivery Cost

> Use your express account for shipment if you have one.

> Use our account for the shipment. Refer to the table below for the approximate charges.

(Different time frame / countries / package size has different price.)

Delivery Method

> Global Common Shipment by DHL / UPS / FedEx / TNT / EMS / SF we support.

> Others more shipping ways, please get in touch with your customer manager.

Common Countries Logistic Time Reference

Region	Country	Logistic Time(Day)
America	United States	5
	Brazil	7
Europe	Germany	5
	United Kingdom	4
	Italy	5
Oceania	Australia	6
	New Zealand	7
Asia	India	6
	Japan	7
Middle East	Israel	6

DHL & FedEx Shipment Charges Reference

Shipment charges(KG)	Reference DHL(USD\$)
0.00kg-1.00kg	USD\$60.00
1.00kg-2.00kg	USD\$70.00
2.00kg-3.00kg	USD\$80.00

Note: The above table is for reference only. There may have some data bias for the uncontrollable factors.

Contact us if you have any questions.

Payment Support

The payment method can be chosen from the methods shown below:

Wire Transfer (T/T, Bank Transfer), Western Union, Credit card, PayPal.



Your Faithful Supply Chain Partner -



Efficient Supply Management



Cost-Saving Procurement



Fast Sourcing & Delivery

Contact us if you have any questions.



Phone

+00852 9146 4856



Email

info@allelco.com

Certifications & Memberships



[View More](#)

Contact us

Address: Flat/Rm C 13/F Harvard Commercial Building 105-111 Thomson Road, Wan Chai, Hong Kong

Phone: +00852 9146 4856

Fax: +00852 3010 8510

Email: info@Allelco.com