

Image may be representation.
See specifications for product details.



AD5258BRMZ1-R7

Manufacturer Part Number	AD5258BRMZ1-R7
Manufacturer	Analog Devices, Inc.
Allelco Part Number	32D-AD5258BRMZ1-R7
ECAD Model	Request Free CAD Models
Parts Description	IC DCTL POT 1KOHM 64TAP 10MSOP
Package	10-TFSOP, 10-MSOP (0.118', 3.00mm Width)
Data sheet	Cylindrical Battery Holders.pdf
RoHs Status	ROHS3 Compliant

Get a Quote

AD5258BRMZ1-R7 - Analog Devices Inc..New Original in Stock. Download Linear Technology AD5258BRMZ1-R7 datasheet/specifications on AllelcoElec.com.
Request a quote for AD5258BRMZ1-R7, please send us email: info@allelco.com

Specifications

AD5258BRMZ1-R7 Tech Specifications
AD5258BRMZ1-R7 - Analog Devices Inc. technical specifications, attributes, parameters

Product Attribute	Attribute Value	Product Attribute	Attribute Value
Manufacturer	Analog Devices, Inc.	Package	Tape & Reel (TR)
Voltage - Supply	2.7V ~ 5.5V	Operating Temperature	-40°C ~ 85°C
Tolerance	±30%	Number of Taps	64
Temperature Coefficient (Typ)	200ppm/°C	Number of Circuits	1
Taper	Linear	Mounting Type	Surface Mount
Supplier Device Package	10-MSOP	Memory Type	Non-Volatile
Series	-	Interface	I²C
Resistance - Wiper (Ohms) (Typ)	75	Features	Selectable Address
Resistance (Ohms)	1k	Configuration	Potentiometer
Package / Case	10-TFSOP, 10-MSOP (0.118', 3.00mm Width)	Base Product Number	AD5258

Parts with Similar Specifications

The three parts on the right have similar specifications to Analog Devices Inc. AD5258BRMZ1-R7

Product Attribute				
Part Number	AD5258BRMZ1-R7	AD5258BRMZ100	AD5258BRMZ50	AD5259BCPZ10-R7
Manufacturer	Analog Devices Inc.	Analog Devices Inc.	Analog Devices Inc.	Analog Devices Inc.
Series	-	-	-	-
Resistance (Ohms)	1k	100k	50k	10k
Number of Taps	64	64	64	256
Base Product Number	AD5258	AD5258	AD5258	AD5259
Mounting Type	Surface Mount	Surface Mount	Surface Mount	Surface Mount
Memory Type	Non-Volatile	Non-Volatile	Non-Volatile	Non-Volatile
Package / Case	10-TFSOP, 10-MSOP (0.118', 3.00mm Width)	10-TFSOP, 10-MSOP (0.118', 3.00mm Width)	10-TFSOP, 10-MSOP (0.118', 3.00mm Width)	10-VDFN Exposed Pad, CSP
Resistance - Wiper (Ohms) (Typ)	75	75	75	75
Number of Circuits	1	1	1	1
Supplier Device Package	10-MSOP	10-MSOP	10-MSOP	10-LFCSP-WD (3x3)
Operating Temperature	-40°C ~ 85°C	-40°C ~ 85°C	-40°C ~ 85°C	-40°C ~ 125°C
Features	Selectable Address	Selectable Address	Selectable Address	Selectable Address
Package	Tape & Reel (TR)	Tube	Tube	Tape & Reel (TR)
Temperature Coefficient (Typ)	200ppm/°C	200ppm/°C	200ppm/°C	500ppm/°C
Voltage - Supply	2.7V ~ 5.5V	2.7V ~ 5.5V	2.7V ~ 5.5V	2.7V ~ 5.5V
Taper	Linear	Linear	Linear	Linear
Interface	I²C	I²C	I²C	I²C
Configuration	Potentiometer	Potentiometer	Potentiometer	Potentiometer
Tolerance	±30%	±30%	±30%	±30%

AD5258BRMZ1-R7 Datasheet PDF

Download AD5258BRMZ1-R7 pdf datasheets and Analog Devices Inc. documentation for AD5258BRMZ1-R7 - Analog Devices Inc..

Datasheets

[Cylindrical Battery Holders.pdf](#)

Other Related Documents

[Tape and Reel Packaging.pdf](#)

PCN Assembly/Origin



Customers Also Interested in

Recommended Products

AD52580B-QG28NAR ESMT	AD5258BRMZ100-REEL7 ADI (Analog Devices, Inc.)	AD52580-QG24NAT ESMT	AD5258BRMZ100 Analog Devices Inc. IC DGTL POT 100KOHM 64TAP 10MSOP	AD5255BRUZ25 ADI (Analog Devices, Inc.)	AD52580B-QG28NAT ESMT
AD5258 ADI (Analog Devices, Inc.)	AD52580-QG28NAT ESMT	AD5258BRMZ50 Analog Devices Inc. IC DGTL POT 50KOHM 64TAP 10MSOP	AD52580-QG28NAR ESMT	AD5254YRUZ ADI (Analog Devices, Inc.)	AD5259BCPZ10-R7 Analog Devices Inc. IC DGTL POT 10KOHM 10LFCSP
AD5258BRMZ10-R7 Analog Devices Inc. IC DGTL POT 10KOHM 64TAP 10MSOP	AD5258BRMZ10 Analog Devices Inc. IC DGTL POT 10KOHM 64TAP 10MSOP	AD5258BRMZ10-ND Texas Instruments	AD5258BRMZ50-R7 Analog Devices Inc. IC DGTL POT 50KOHM 64TAP 10MSOP	AD5258BRMZ1 Analog Devices Inc. IC DGTL POT 1KOHM 64TAP 10MSOP	AD52580 ESMT

Shipment

Delivery Time

In-stock items can be shipped within 24 hours. Some parts will be arranged for delivery within 1-2 days from the date all items arrive at our warehouse. And Allelco ships order once a day at about 17:00, except Sunday. Once the goods are shipped, the estimated delivery time depends on the shipping methods and Delivery destination. The table below shows are the logistic time for some common countries.

Delivery Cost

- > Use your express account for shipment if you have one.
- > Use our account for the shipment. Refer to the table below for the approximate charges.
(Different time frame / countries / package size has different price.)

Delivery Method

- > Global Common Shipment by DHL / UPS / FedEx / TNT / EMS / SF we support.
- > Others more shipping ways, please get in touch with your customer manager.

Common Countries Logistic Time Reference		
Region	Country	Logistic Time(Day)
America	United States	5
	Brazil	7
Europe	Germany	5
	United Kingdom	4
	Italy	5
Oceania	Australia	6
	New Zealand	7
Asia	India	6
	Japan	7
Middle East	Israel	6

DHL & FedEx Shipment Charges Reference	
Shipment charges(KG)	Reference DHL(USD\$)
0.00kg-1.00kg	USD\$60.00
1.00kg-2.00kg	USD\$70.00
2.00kg-3.00kg	USD\$80.00

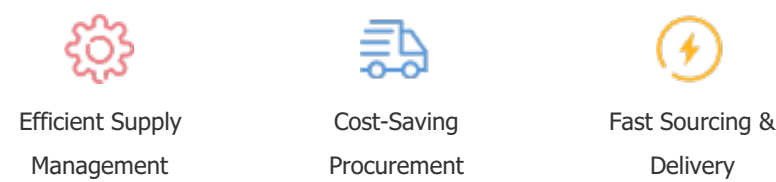
Note: The above table is for reference only. There may have some data bias for the uncontrollable factors.
Contact us if you have any questions.

Payment Support

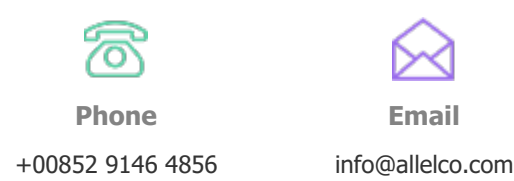
The payment method can be chosen from the methods shown below:
Wire Transfer (T/T, Bank Transfer), Western Union, Credit card,
PayPal.



Your Faithful Supply Chain Partner -



Contact us if you have any questions.



Certifications & Memberships



[View More](#)