

Image may be representation.
See specifications for product details.



5CGXFC7C6U19I7N

Manufacturer Part Number	5CGXFC7C6U19I7N
Manufacturer	Intel
Allelco Part Number	32D-5CGXFC7C6U19I7N
ECAD Model	Request Free CAD Models
Parts Description	IC FPGA 240 I/O 484UBGA
Package	484-FBGA
Data sheet	Virtual JTAG Megafuntion Guide.pdf Cyclone V Device Handbook.pdf Cyclone V Device Overview.pdf
RoHs Status	RoHS Compliant

Get a Quote

5CGXFC7C6U19I7N - Intel.New Original in Stock. Download Linear Technology 5CGXFC7C6U19I7N datasheet/specifications on AllelcoElec.com.
Request a quote for 5CGXFC7C6U19I7N, please send us email: info@allelco.com

Specifications

5CGXFC7C6U19I7N Tech Specifications
5CGXFC7C6U19I7N - Intel technical specifications, attributes, parameters

Product Attribute	Attribute Value	Product Attribute	Attribute Value
Manufacturer	Intel	Operating Temperature	-40°C ~ 100°C (TJ)
Voltage - Supply	1.07V ~ 1.13V	Number of Logic Elements/Cells	149500
Total RAM Bits	7880704	Number of LABs/CLBs	56480
Supplier Device Package	484-UBGA (19x19)	Number of I/O	240
Series	Cyclone® V GX	Mounting Type	Surface Mount
Package / Case	484-FBGA	Base Product Number	5CGXFC7
Package	Tray		

Parts with Similar Specifications

The three parts on the right have similar specifications to Intel 5CGXFC7C6U19I7N

Product Attribute				
Part Number	5CGXFC7C6U19I7N	5CGXFC4C7F2C8N	5CGXFC7D6F2I7N	5CGXFC7C6U19C7N
Manufacturer	Intel	Intel	Intel	Intel
Base Product Number	5CGXFC7	5CGXFC4	5CGXFC7	5CGXFC7
Voltage - Supply	1.07V ~ 1.13V	1.07V ~ 1.13V	1.07V ~ 1.13V	1.07V ~ 1.13V
Series	Cyclone® V GX	Cyclone® V GX	Cyclone® V GX	Cyclone® V GX
Number of Logic Elements/Cells	149500	50000	149500	149500
Supplier Device Package	484-UBGA (19x19)	672-FBGA (27x27)	672-FBGA (27x27)	484-UBGA (19x19)
Number of I/O	240	336	336	240
Number of LABs/CLBs	56480	18868	56480	56480
Total RAM Bits	7880704	2862080	7880704	7880704
Mounting Type	Surface Mount	Surface Mount	Surface Mount	Surface Mount
Package	Tray	Tray	Tray	Tray
Operating Temperature	-40°C ~ 100°C (TJ)	0°C ~ 85°C (TJ)	-40°C ~ 100°C (TJ)	0°C ~ 85°C (TJ)
Package / Case	484-FBGA	672-BGA	672-BGA	484-FBGA

5CGXFC7C6U19I7N Datasheet PDF

Download 5CGXFC7C6U19I7N pdf datasheets and Intel documentation for 5CGXFC7C6U19I7N - Intel.

Datasheets

- [Virtual JTAG Megafuntion Guide.pdf](#)
- [Cyclone V Device Handbook.pdf](#)
- [Cyclone V Device Overview.pdf](#)

PCN Packaging

- [Mult Dev Label CHG 24/Jan/2020.pdf](#)
- [Mult Dev Label Chgs 24/Feb/2020.pdf](#)

PCN Design/Specification

- [Quartus SW/Web Chgs 23/Sep/2021.pdf](#)
- [Mult Dev Software Chgs 3/Jun/2021.pdf](#)

Errata

- [2.73KHz.pdf](#)

Customers Also Interested in

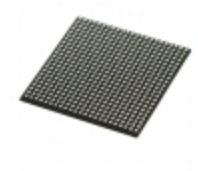
Recommended Products



5CGXFC4C7F27C8N
Intel
IC FPGA 336 I/O 672FBGA



5CGXFC7D6F27I7N
Intel
IC FPGA 336 I/O 672FBGA



5CGXFC7C6U19C7N
Intel
IC FPGA 240 I/O 484UBGA



5CGXFC7D6F31I7N
Intel
IC FPGA 480 I/O 896FBGA



5CGXFC4C7F23C8N
Intel
IC FPGA 240 I/O 484FBGA



5CGXFC5C7F23C8N
Intel
IC FPGA 240 I/O 484FBGA



5CGXFC9D6F27I7N
Intel
IC FPGA 336 I/O 672FBGA



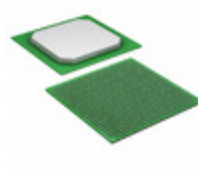
5CGXFC5C6U19I7N
Intel
IC FPGA 224 I/O 484UBGA



5CGXFC5C6F27C7N
Intel
IC FPGA 336 I/O 672FBGA



5CGXFC9E6F31I7N
Intel
IC FPGA 480 I/O 896FBGA



5CGXFC9D6F27C7N
Intel
IC FPGA 336 I/O 672FBGA



5CGXFC7D6F31C6N
Intel
IC FPGA 480 I/O 896FBGA



5CGXFC7C6F23C7N
Intel
IC FPGA 240 I/O 484FBGA



5CGXFC7D6F31C7N
Intel
IC FPGA 480 I/O 896FBGA



5CGXFC5C6F27I7N
Intel
IC FPGA 336 I/O 672FBGA



5CGXFC5C6F23I7N
Intel
IC FPGA 240 I/O 484FBGA



5CGXFC7D6F31I7
Intel
IC FPGA 480 I/O 896FBGA



5CGXFC9E6F35C7N
Intel
IC FPGA 560 I/O 1152FBGA

Shipment

Delivery Time

In-stock items can be shipped within 24 hours. Some parts will be arranged for delivery within 1-2 days from the date all items arrive at our warehouse. And Allelco ships order once a day at about 17:00, except Sunday. Once the goods are shipped, the estimated delivery time depends on the shipping methods and Delivery destination. The table below shows are the logistic time for some common countries.

Delivery Cost

> Use your express account for shipment if you have one.

> Use our account for the shipment. Refer to the table below for the approximate charges.

(Different time frame / countries / package size has different price.)

Delivery Method

> Global Common Shipment by DHL / UPS / FedEx / TNT / EMS / SF we support.

> Others more shipping ways, please get in touch with your customer manager.

Common Countries Logistic Time Reference		
Region	Country	Logistic Time(Day)
America	United States	5
	Brazil	7
Europe	Germany	5
	United Kingdom	4
	Italy	5
Oceania	Australia	6
	New Zealand	7
Asia	India	6
	Japan	7
Middle East	Israel	6

DHL & FedEx Shipment Charges Reference	
Shipment charges(KG)	Reference DHL(USD\$)
0.00kg-1.00kg	USD\$60.00
1.00kg-2.00kg	USD\$70.00
2.00kg-3.00kg	USD\$80.00

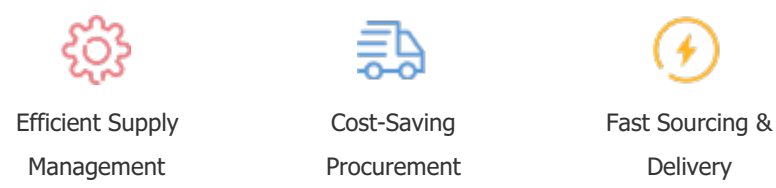
Note: The above table is for reference only. There may have some data bias for the uncontrollable factors.
Contact us if you have any questions.

Payment Support

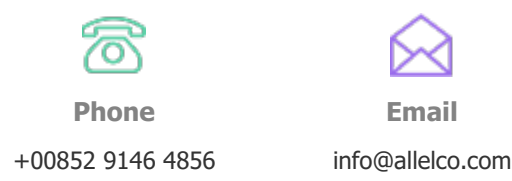
The payment method can be chosen from the methods shown below:
Wire Transfer (T/T, Bank Transfer), Western Union, Credit card, PayPal.



Your Faithful Supply Chain Partner -



Contact us if you have any questions.



Certifications & Memberships



[View More](#)