



Image may be representation.  
See specifications for product details.



## SZMMSZ10T1G

Manufacturer Part Number	<b>SZMMSZ10T1G</b>
Manufacturer	<b>onsemi</b>
Allelco Part Number	32D-SZMMSZ10T1G
ECAD Model	Request Free CAD Models
Parts Description	DIODE ZENER 10V 500MW SOD123
Package	SOD-123
Data sheet	<b>MMSZyyyT1G, SZMMSZyyyT1G Series.pdf</b>
RoHs Status	<b>ROHS3 Compliant</b>

**Get a Quote**

SZMMSZ10T1G - onsemi.New Original in Stock. Download Linear Technology SZMMSZ10T1G datasheet/specifications on AllelcoElec.com.  
Request a quote for SZMMSZ10T1G, please send us email: [info@allelco.com](mailto:info@allelco.com)

### Specifications

SZMMSZ10T1G Tech Specifications  
SZMMSZ10T1G - onsemi technical specifications, attributes, parameters

Product Attribute	Attribute Value	Product Attribute	Attribute Value
Manufacturer	onsemi	Package / Case	SOD-123
Voltage - Zener (Nom) (Vz)	10 V	Package	Tape & Reel (TR)
Voltage - Forward (Vf) (Max) @ If	900 mV @ 10 mA	Operating Temperature	-55°C ~ 150°C
Tolerance	±5%	Mounting Type	Surface Mount
Supplier Device Package	SOD-123	Impedance (Max) (Zzt)	20 Ohms
Series	Automotive, AEC-Q101	Current - Reverse Leakage @ Vr	200 nA @ 7 V
Power - Max	500 mW	Base Product Number	SZMMSZ10

### Parts with Similar Specifications

The three parts on the right have similar specifications to onsemi SZMMSZ10T1G

Product Attribute				
Part Number	SZMMSZ10T1G	<b>SZMMSZ16T1G</b>	<b>SZMMSZ24T1G</b>	<b>SZMMBZ5270BLT1G</b>
Manufacturer	onsemi	onsemi	onsemi	onsemi
Mounting Type	Surface Mount	Surface Mount	Surface Mount	Surface Mount
Series	Automotive, AEC-Q101	Automotive, AEC-Q101	Automotive, AEC-Q101	Automotive, AEC-Q101
Base Product Number	SZMMSZ10	SZMMSZ16	SZMMSZ24	SZMMBZ5270
Supplier Device Package	SOD-123	SOD-123	SOD-123	SOT-23-3 (TO-236)
Power - Max	500 mW	500 mW	500 mW	225 mW
Impedance (Max) (Zzt)	20 Ohms	40 Ohms	70 Ohms	400 Ohms
Tolerance	±5%	±5%	±5%	±5%
Package	Tape & Reel (TR)	Tape & Reel (TR)	Tape & Reel (TR)	Tape & Reel (TR)
Voltage - Zener (Nom) (Vz)	10 V	16 V	24 V	91 V
Operating Temperature	-55°C ~ 150°C	-55°C ~ 150°C	-55°C ~ 150°C	-65°C ~ 150°C
Voltage - Forward (Vf) (Max) @ If	900 mV @ 10 mA	900 mV @ 10 mA	900 mV @ 10 mA	900 mV @ 10 mA
Package / Case	SOD-123	SOD-123	SOD-123	TO-236-3, SC-59, SOT-23-3
Current - Reverse Leakage @ Vr	200 nA @ 7 V	50 nA @ 11.2 V	50 nA @ 16.8 V	100 nA @ 69 V

### SZMMSZ10T1G Datasheet PDF

Download SZMMSZ10T1G pdf datasheets and onsemi documentation for SZMMSZ10T1G - onsemi.

#### Datasheets

[MMSZyyyT1G, SZMMSZyyyT1G Series.pdf](#)

#### Environmental Information

[onsemi REACH.pdf](#)

[onsemi RoHS.pdf](#)

#### PCN Packaging

[Covering Tape/Material Chg 20/May/2016.pdf](#)

[Covering Tape/Material Update 2/Feb/2017.pdf](#)

#### PCN Design/Specification

[Mult Dev Wire Clarification 21/Nov/2017.pdf](#)

#### PCN Assembly/Origin

[Mult Dev Assembly Chgs 3/Jul/2020.pdf](#)

### Customers Also Interested in

## Recommended Products



### SZMMBZ6V8ALT1G

onsemi  
TVS DIODE 4.5VWM 9.6VC SOT23-3



### SZMMSZ16T1G

onsemi  
DIODE ZENER 16V 500MW SOD123



### SZMMSZ24T1G

onsemi  
DIODE ZENER 24V 500MW SOD123



### SZMMBZ5270BLT1G

onsemi  
DIODE ZENER 91V 225MW SOT23-3



### SZMMSZ18T1G

onsemi  
DIODE ZENER 18V 500MW SOD123



### SZMMBZ5262BLT1G

onsemi  
DIODE ZENER 51V 225MW SOT23-3



### SZMMQA6V2T1G

onsemi  
TVS DIODE 4VWM 9VC SC74



### SZMMSZ11T1G

onsemi  
DIODE ZENER 11V 500MW SOD123



### SZMMBZ9V1ALT3G

onsemi  
TVS DIODE 6VWM 14VC SOT23-3



### SZMMSZ20T1G

onsemi  
DIODE ZENER 20V 500MW SOD123



### SZMMQA5V6T1G

onsemi  
TVS DIODE 3VWM 8VC SC74



### SZMMQA27VT1G

onsemi  
TVS DIODE 21VWM 39VC SC74



### SZMMSZ10T3G

onsemi  
DIODE ZENER 10V 500MW SOD123



### SZMMSZ12T3G

onsemi  
DIODE ZENER 12V 500MW SOD123



### SZMMBZ5263ELT1G

onsemi  
DIODE ZENER 56V 225MW SOT23-3



### SZMMQA33VT1G

onsemi  
TVS DIODE 25VWM 48.6VC SC74



### SZMMSZ13T1G

onsemi  
DIODE ZENER 13V 500MW SOD123



### SZMMSZ12T1G

onsemi  
DIODE ZENER 12V 500MW SOD123

## Shipment

### Delivery Time

In-stock items can be shipped within 24 hours. Some parts will be arranged for delivery within 1-2 days from the date all items arrive at our warehouse. And Allelco ships order once a day at about 17:00, except Sunday. Once the goods are shipped, the estimated delivery time depends on the shipping methods and Delivery destination. The table below shows are the logistic time for some common countries.

### Delivery Cost

> Use your express account for shipment if you have one.

> Use our account for the shipment. Refer to the table below for the approximate charges.

(Different time frame / countries / package size has different price.)

### Delivery Method

> Global Common Shipment by DHL / UPS / FedEx / TNT / EMS / SF we support.

> Others more shipping ways, please get in touch with your customer manager.

Common Countries Logistic Time Reference		
Region	Country	Logistic Time(Day)
America	United States	5
	Brazil	7
Europe	Germany	5
	United Kingdom	4
	Italy	5
Oceania	Australia	6
	New Zealand	7
Asia	India	6
	Japan	7
Middle East	Israel	6

DHL & FedEx Shipment Charges Reference	
Shipment charges(KG)	Reference DHL(USD\$)
0.00kg-1.00kg	USD\$60.00
1.00kg-2.00kg	USD\$70.00
2.00kg-3.00kg	USD\$80.00

Note: The above table is for reference only. There may have some data bias for the uncontrollable factors.

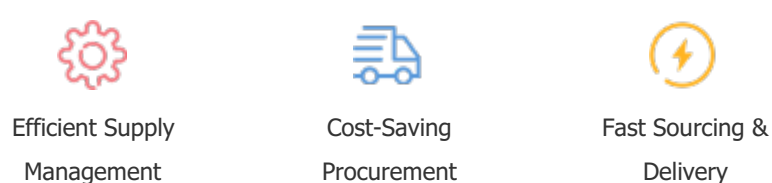
Contact us if you have any questions.

## Payment Support

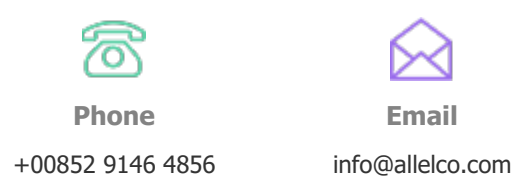
The payment method can be chosen from the methods shown below:  
Wire Transfer (T/T, Bank Transfer), Western Union, Credit card,  
PayPal.



## Your Faithful Supply Chain Partner -



Contact us if you have any questions.



## Certifications & Memberships



View More