

Image may be representation.
See specifications for product details.



MAX488MJA

Manufacturer Part Number	MAX488MJA
Manufacturer	Maxim Integrated
Allelco Part Number	32D-MAX488MJA
ECAD Model	Request Free CAD Models
Parts Description	IC TRANSCEIVER FULL 1/1 8CERDIP
Package	8-CDIP (0.300", 7.62mm)
Data sheet	MAX488MJA.pdf
RoHs Status	ROHS3 Compliant

Get a Quote

MAX488MJA - Analog Devices Inc./Maxim Integrated. New Original in Stock. Download Linear Technology MAX488MJA datasheet/specifications on AllelcoElec.com. Request a quote for MAX488MJA, please send us email: info@allelco.com

Specifications

MAX488MJA Tech Specifications

MAX488MJA - Analog Devices Inc./Maxim Integrated technical specifications, attributes, parameters

Product Attribute	Attribute Value	Product Attribute	Attribute Value
Manufacturer	Maxim Integrated	Package	Tube
Voltage - Supply	4.75V ~ 5.25V	Operating Temperature	-55°C ~ 125°C (TA)
Type	Transceiver	Number of Drivers/Receivers	1/1
Supplier Device Package	8-CERDIP	Mounting Type	Through Hole
Series	-	Duplex	Full
Receiver Hysteresis	70 mV	Data Rate	250kbps
Protocol	RS422, RS485	Base Product Number	MAX488
Package / Case	8-CDIP (0.300", 7.62mm)		

Parts with Similar Specifications

The three parts on the right have similar specifications to Analog Devices Inc./Maxim Integrated MAX488MJA

Product Attribute				
Part Number	MAX488MJA	MAX488EPA	MAX488EESA+T	MAX488EPA+
Manufacturer	Analog Devices Inc./Maxim Integrated	Analog Devices Inc./Maxim Integrated	Analog Devices Inc./Maxim Integrated	Analog Devices Inc./Maxim Integrated
Series	-	-	-	-
Base Product Number	MAX488	-	MAX488	MAX488
Mounting Type	Through Hole	Through Hole	Surface Mount	Through Hole
Voltage - Supply	4.75V ~ 5.25V	4.75V ~ 5.25V	4.75V ~ 5.25V	4.75V ~ 5.25V
Protocol	RS422, RS485	RS422, RS485	RS422, RS485	RS422, RS485
Number of Drivers/Receivers	1/1	1/1	1/1	1/1
Package / Case	8-CDIP (0.300", 7.62mm)	8-DIP (0.300", 7.62mm)	8-SOIC (0.154", 3.90mm Width)	8-DIP (0.300", 7.62mm)
Type	Transceiver	Transceiver	Transceiver	Transceiver
Supplier Device Package	8-CERDIP	8-PDIP	8-SOIC	8-PDIP
Duplex	Full	Full	Full	Full
Receiver Hysteresis	70 mV	70 mV	70 mV	70 mV
Data Rate	250kbps	250kbps	250kbps	250kbps
Package	Tube	Bulk	Tape & Reel (TR)	Tube
Operating Temperature	-55°C ~ 125°C (TA)	-40°C ~ 85°C (TA)	-40°C ~ 85°C	-40°C ~ 85°C

MAX488MJA Datasheet PDF

Download MAX488MJA pdf datasheets and Analog Devices Inc./Maxim Integrated documentation for MAX488MJA - Analog Devices Inc./Maxim Integrated.

Environmental Information

Maxim Integrated REACH.pdf

Maxim Integrated RoHS Cert.pdf

Customers Also Interested in

Recommended Products

MAX4899EETE+T	MAX4899AEETE+T	MAX4896ETP+	MAX488EPA	MAX488EESA+T	MAX4899AEETE+
Analog Devices Inc./Maxim Integrated	Analog Devices Inc./Maxim Integrated	Analog Devices Inc./Maxim Integrated	Analog Devices Inc./Maxim Integrated	Analog Devices Inc./Maxim Integrated	Analog Devices Inc./Maxim Integrated
IC MULTIPLEXER DUAL 3X1 16TQFN	IC MULTIPLEXER DUAL 4X1 16TQFN	IC PWR DRIVER N-CHAN 1:8 20TQFN	RS-485/RS-422 TRANSCEIVER	IC TRANSCEIVER FULL 1/1 8SOIC	IC MULTIPLEXER DUAL 4X1 16TQFN

MAX488EPA+	MAX4892EETX+	MAX4890EETJ+T	MAX488ESA	MAX4895EETE+T	MAX488ESA-T
Analog Devices Inc./Maxim Integrated IC TRANSCEIVER FULL 1/1 8DIP	Analog Devices Inc./Maxim Integrated IC ETHERNET SWITCH OCTAL 36TOFN	Analog Devices Inc./Maxim Integrated IC ETHERNET SWITCH OCTAL 37TOFN	Analog Devices Inc./Maxim Integrated IC TRANSCEIVER FULL 1/1 8SOIC	Analog Devices Inc./Maxim Integrated TVS DEVICE MIXED 16TQFN	Analog Devices Inc./Maxim Integrated IC TRANSCEIVER FULL 1/1 8SOIC
					
MAX488EPA+	MAX488EESA+	MAX4896ATP+T	MAX488EESA-T	MAX488EESA	MAX488EESA+
Analog Devices Inc./Maxim Integrated IC TRANSCEIVER FULL 1/1 8SOIC	Analog Devices Inc./Maxim Integrated IC TRANSCEIVER FULL 1/1 8SOIC	Analog Devices Inc./Maxim Integrated IC PWR DRIVER N-CHAN 1:8 20TQFN	Analog Devices Inc./Maxim Integrated IC TRANSCEIVER FULL 1/1 8SOIC	Analog Devices Inc./Maxim Integrated IC TRANSCEIVER FULL 1/1 8SOIC	Analog Devices Inc./Maxim Integrated IC TRANSCEIVER FULL 1/1 8SOIC

Shipment

Delivery Time

In-stock items can be shipped within 24 hours. Some parts will be arranged for delivery within 1-2 days from the date all items arrive at our warehouse. And Allelco ships order once a day at about 17:00, except Sunday. Once the goods are shipped, the estimated delivery time depends on the shipping methods and Delivery destination. The table below shows are the logistic time for some common countries.

Delivery Cost

> Use your express account for shipment if you have one.

> Use our account for the shipment. Refer to the table below for the approximate charges.

(Different time frame / countries / package size has different price.)

Delivery Method

> Global Common Shipment by DHL / UPS / FedEx / TNT / EMS / SF we support.

> Others more shipping ways, please get in touch with your customer manager.

Common Countries Logistic Time Reference		
Region	Country	Logistic Time(Day)
America	United States	5
	Brazil	7
Europe	Germany	5
	United Kingdom	4
	Italy	5
Oceania	Australia	6
	New Zealand	7
Asia	India	6
	Japan	7
Middle East	Israel	6

DHL & FedEx Shipment Charges Reference	
Shipment charges(KG)	Reference DHL(USD\$)
0.00kg-1.00kg	USD\$60.00
1.00kg-2.00kg	USD\$70.00
2.00kg-3.00kg	USD\$80.00

Note: The above table is for reference only. There may have some data bias for the uncontrollable factors.

Contact us if you have any questions.

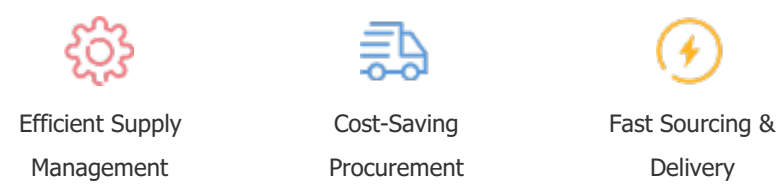
Payment Support

The payment method can be chosen from the methods shown below:

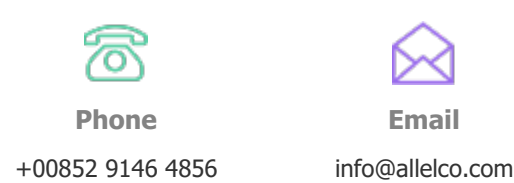
Wire Transfer (T/T, Bank Transfer), Western Union, Credit card, PayPal.



Your Faithful Supply Chain Partner -



Contact us if you have any questions.



Certifications & Memberships



[View More](#)