

Image may be representation.  
See specifications for product details.



## MAX320ESA

Manufacturer Part Number	<b>MAX320ESA</b>
Manufacturer	<b>Maxim Integrated</b>
Allelco Part Number	32D-MAX320ESA
ECAD Model	Request Free CAD Models
Parts Description	IC SWITCH SPST-NOX2 350HM 8SOIC
Package	8-SOIC (0.154", 3.90mm Width)
Data sheet	MAX320ESA.pdf

**Get a Quote**

MAX320ESA - Analog Devices Inc./Maxim Integrated. New Original in Stock. Download Linear Technology MAX320ESA datasheet/specifications on AllelcoElec.com.  
Request a quote for MAX320ESA, please send us email: [info@allelco.com](mailto:info@allelco.com)

## Specifications

MAX320ESA Tech Specifications

MAX320ESA - Analog Devices Inc./Maxim Integrated technical specifications, attributes, parameters

Product Attribute	Attribute Value	Product Attribute	Attribute Value
Manufacturer	Maxim Integrated	On-State Resistance (Max)	350hm
Voltage - Supply, Single (V+)	2.7V ~ 8V	Number of Circuits	2
Voltage - Supply, Dual (V±)	±2.7V ~ 8V	Multiplexer/Demultiplexer Circuit	1:1
Switch Time (Ton, Toff) (Max)	150ns, 100ns	Mounting Type	Surface Mount
Switch Circuit	SPST - NO	Current - Leakage (IS(off)) (Max)	100pA
Supplier Device Package	8-SOIC	Crosstalk	-85dB @ 1MHz
Series	-	Charge Injection	2pC
Package / Case	8-SOIC (0.154", 3.90mm Width)	Channel-to-Channel Matching (ΔRon)	300mOhm
Package	Bulk	Channel Capacitance (CS(off), CD(off))	9pF, 9pF
Operating Temperature	-40°C ~ 85°C (TA)	-3db Bandwidth	-

## Parts with Similar Specifications

The three parts on the right have similar specifications to Analog Devices Inc./Maxim Integrated MAX320ESA

Product Attribute				
Part Number	MAX320ESA	MAX320CUA+T	MAX320CSA+T	MAX320CPA
Manufacturer	Analog Devices Inc./Maxim Integrated	Analog Devices Inc./Maxim Integrated	Analog Devices Inc./Maxim Integrated	Analog Devices Inc./Maxim Integrated
Current - Leakage (IS(off)) (Max)	100pA	100pA	100pA	100pA
Channel Capacitance (CS(off), CD(off))	9pF, 9pF	9pF, 9pF	9pF, 9pF	9pF, 9pF
Mounting Type	Surface Mount	Surface Mount	Surface Mount	Through Hole
Voltage - Supply, Single (V+)	2.7V ~ 8V	-	-	2.7V ~ 8V
Supplier Device Package	8-SOIC	8-uMAX/uSOP	8-SOIC	8-PDIP
Package / Case	8-SOIC (0.154", 3.90mm Width)	8-TSSOP, 8-MSOP (0.118", 3.00mm Width)	8-SOIC (0.154", 3.90mm Width)	8-DIP (0.300", 7.62mm)
-3db Bandwidth	-	-	-	-
Crosstalk	-85dB @ 1MHz	-85dB @ 1MHz	-85dB @ 1MHz	-85dB @ 1MHz
Package	Bulk	Tape & Reel (TR)	Tape & Reel (TR)	Bulk
Channel-to-Channel Matching (ΔRon)	300mOhm	300mOhm	300mOhm	300mOhm
Switch Time (Ton, Toff) (Max)	150ns, 100ns	150ns, 100ns	150ns, 100ns	150ns, 100ns
Series	-	-	-	-
On-State Resistance (Max)	350hm	350hm	350hm	350hm
Charge Injection	2pC	2pC	2pC	2pC
Multiplexer/Demultiplexer Circuit	1:1	1:1	1:1	1:1
Number of Circuits	2	2	2	2
Operating Temperature	-40°C ~ 85°C (TA)	0°C ~ 70°C (TA)	0°C ~ 70°C (TA)	0°C ~ 70°C (TA)
Switch Circuit	SPST - NO	SPST - NO	SPST - NO	SPST - NO
Voltage - Supply, Dual (V±)	±2.7V ~ 8V	±2.7V ~ 8V	±2.7V ~ 8V	±2.7V ~ 8V

## Customers Also Interested in

### Recommended Products



**MAX3212EAI+**

Analog Devices Inc./Maxim Integrated  
IC TRANSCEIVER FULL 3/5 28SSOP



**MAX320CUA+T**

Analog Devices Inc./Maxim Integrated  
IC SWITCH SPST-NOX2 350HM 8UMAX



**MAX3212CAI**

Analog Devices Inc./Maxim Integrated  
IC TRANSCEIVER FULL 3/5 28SSOP



**MAX3212CAI+**

Analog Devices Inc./Maxim Integrated  
IC TRANSCEIVER FULL 3/5 28SSOP



**MAX320CSA+T**

Analog Devices Inc./Maxim Integrated  
IC SWITCH SPST-NOX2 350HM 8SOIC



**MAX320CPA**

Analog Devices Inc./Maxim Integrated  
IC SWITCH SPST-NO X 2 350HM 8DIP

**MAX3209EEUU+T**

Analog Devices Inc./Maxim Integrated  
IC TRANSCEIVER FULL 6/10 38TSSOP

**MAX3209ECUU+T**

Analog Devices Inc./Maxim Integrated  
IC TRANSCEIVER FULL 6/10 38TSSOP

**MAX3218CAP**

Analog Devices Inc./Maxim Integrated  
IC TRANSCEIVER FULL 2/2 20SSOP

**MAX320ESA+**

Analog Devices Inc./Maxim Integrated  
IC SWITCH SPST-NOX2 350HM 8SOIC

**MAX3218CAP+T**

Analog Devices Inc./Maxim Integrated  
IC TRANSCEIVER FULL 2/2 20SSOP

**MAX3212EAI**

Analog Devices Inc./Maxim Integrated  
IC TRANSCEIVER FULL 3/5 28SSOP

**MAX320CUA**

Analog Devices Inc./Maxim Integrated  
IC SWITCH SPST-NOX2 350HM 8UMAX

**MAX3209EEUU**

Analog Devices Inc./Maxim Integrated  
IC TRANSCEIVER FULL 6/10 38TSSOP

**MAX320CSA+**

Analog Devices Inc./Maxim Integrated  
IC SWITCH SPST-NOX2 350HM 8SOIC

**MAX320CUA+**

Analog Devices Inc./Maxim Integrated  
IC SWITCH SPST-NOX2 350HM 8UMAX

**MAX3212CWI**

Analog Devices Inc./Maxim Integrated  
IC TRANSCEIVER FULL 3/5 28SO

**MAX3218CAP+**

Analog Devices Inc./Maxim Integrated  
IC TRANSCEIVER FULL 2/2 20SSOP

## Shipment

### Delivery Time

In-stock items can be shipped within 24 hours. Some parts will be arranged for delivery within 1-2 days from the date all items arrive at our warehouse. And Allelco ships order once a day at about 17:00, except Sunday. Once the goods are shipped, the estimated delivery time depends on the shipping methods and Delivery destination. The table below shows are the logistic time for some common countries.

### Delivery Cost

> Use your express account for shipment if you have one.

> Use our account for the shipment. Refer to the table below for the approximate charges.

(Different time frame / countries / package size has different price.)

### Delivery Method

> Global Common Shipment by DHL / UPS / FedEx / TNT / EMS / SF we support.

> Others more shipping ways, please get in touch with your customer manager.

Common Countries Logistic Time Reference		
Region	Country	Logistic Time(Day)
America	United States	5
	Brazil	7
Europe	Germany	5
	United Kingdom	4
	Italy	5
Oceania	Australia	6
	New Zealand	7
Asia	India	6
	Japan	7
Middle East	Israel	6

DHL & FedEx Shipment Charges Reference	
Shipment charges(KG)	Reference DHL(USD\$)
0.00kg-1.00kg	USD\$60.00
1.00kg-2.00kg	USD\$70.00
2.00kg-3.00kg	USD\$80.00

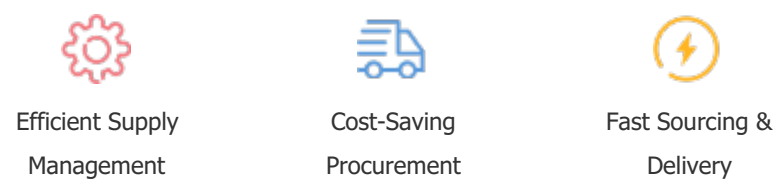
Note: The above table is for reference only. There may have some data bias for the uncontrollable factors.  
Contact us if you have any questions.

## Payment Support

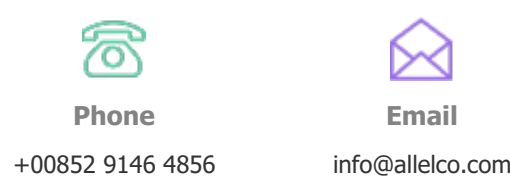
The payment method can be chosen from the methods shown below:  
Wire Transfer (T/T, Bank Transfer), Western Union, Credit card, PayPal.



## Your Faithful Supply Chain Partner -



Contact us if you have any questions.



## Certifications & Memberships



[View More](#)



### Contact us

Address: Flat/Rm C 13/F Harvard Commercial Building 105-111 Thomson Road, Wan Chai, Hong Kong

Phone: +00852 9146 4856

Fax: +00852 3010 8510

Email: info@Allelco.com

Copyright © 2012-2023 AllelcoElec.com. All rights reserved.