

Image may be representation.
See specifications for product details.



SMA6J33CA-TR

| | |
|--------------------------|----------------------------------|
| Manufacturer Part Number | SMA6J33CA-TR |
| Manufacturer | STMicroelectronics |
| Allelco Part Number | 32D-SMA6J33CA-TR |
| ECAD Model | PCB Symbol, Footprint & 3D Model |
| Parts Description | TVS DIODE 33VWM 60.8VC SMA |
| Package | DO-214AC, SMA |
| Data sheet | SMA6J33CA-TR.pdf |
| RoHs Status | ROHS3 Compliant |

Get a Quote

SMA6J33CA-TR - STMicroelectronics.New Original in Stock. Download Linear Technology SMA6J33CA-TR datasheet/specifications on AllelcoElec.com.
Request a quote for SMA6J33CA-TR, please send us email: info@allelco.com

Specifications

SMA6J33CA-TR Tech Specifications
SMA6J33CA-TR - STMicroelectronics technical specifications, attributes, parameters

| Product Attribute | Attribute Value | Product Attribute | Attribute Value |
|----------------------------------|--------------------|----------------------------------|--------------------|
| Manufacturer | STMicroelectronics | Package / Case | DO-214AC, SMA |
| Voltage - Reverse Standoff (Typ) | 33V | Package | Tape & Reel (TR) |
| Voltage - Clamping (Max) @ Ipp | 60.8V | Operating Temperature | -55°C ~ 175°C (TJ) |
| Voltage - Breakdown (Min) | 36.7V | Mounting Type | Surface Mount |
| Type | Zener | Current - Peak Pulse (10/1000µs) | 57A (8/20µs) |
| Supplier Device Package | SMA (DO-214AC) | Capacitance @ Frequency | - |
| Series | SMA6J, TRANSIL™ | Bidirectional Channels | 1 |
| Power Line Protection | No | Base Product Number | SMA6J33 |
| Power - Peak Pulse | 600W | Applications | General Purpose |

Parts with Similar Specifications

The three parts on the right have similar specifications to STMicroelectronics SMA6J33CA-TR

| Product Attribute | | | | |
|----------------------------------|--------------------|--------------------|--------------------|--------------------|
| Part Number | SMA6J33CA-TR | SMA6J28CA | SMA6J40A | SMA6J5.0A-TR |
| Manufacturer | STMicroelectronics | Littelfuse Inc. | Littelfuse Inc. | STMicroelectronics |
| Power - Peak Pulse | 600W | 600W | 600W | 600W |
| Current - Peak Pulse (10/1000µs) | 57A (8/20µs) | 13.8A | 9.7A | 298A (8/20µs) |
| Capacitance @ Frequency | - | - | - | - |
| Type | Zener | Zener | Zener | Zener |
| Mounting Type | Surface Mount | Surface Mount | Surface Mount | Surface Mount |
| Series | SMA6J, TRANSIL™ | SMA6J | SMA6J | SMA6J, TRANSIL™ |
| Package / Case | DO-214AC, SMA | DO-214AC, SMA | DO-214AC, SMA | DO-214AC, SMA |
| Voltage - Breakdown (Min) | 36.7V | 31.1V | 44.4V | 6.4V |
| Voltage - Clamping (Max) @ Ipp | 60.8V | 45.4V | 64.5V | 13.4V |
| Voltage - Reverse Standoff (Typ) | 33V | 28V | 40V | 5V |
| Bidirectional Channels | 1 | 1 | - | - |
| Operating Temperature | -55°C ~ 175°C (TJ) | -65°C ~ 150°C (TJ) | -65°C ~ 150°C (TJ) | -55°C ~ 175°C (TJ) |
| Applications | General Purpose | Telecom | General Purpose | General Purpose |
| Base Product Number | SMA6J33 | - | - | SMA6J5.0 |
| Power Line Protection | No | No | No | No |
| Supplier Device Package | SMA (DO-214AC) | DO-214AC (SMA) | DO-214AC (SMA) | SMA (DO-214AC) |
| Package | Tape & Reel (TR) | Tape & Reel (TR) | Tape & Reel (TR) | Tape & Reel (TR) |

SMA6J33CA-TR Datasheet PDF

Download SMA6J33CA-TR pdf datasheets and STMicroelectronics documentation for SMA6J33CA-TR - STMicroelectronics.

PCN Assembly/Origin

Mult Dev 06/Mar/2020.pdf

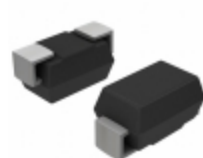
Customers Also Interested in

Recommended Products



SMA6J28CA

Littelfuse Inc.
TVS DIODES SMA 600W



SMA6J40A

Littelfuse Inc.
TVS DIODE 40VWM 64.5V DO214AC TR



SMA6J5.0A-TR

STMicroelectronics
TVS DIODE 5VWM 13.4VC SMA



SMA6J28A

Bourns Inc.
TVS DIODE 28VWM 45.4VC DO214AC



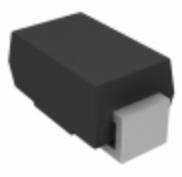
SMA6J33A

Littelfuse Inc.
TVS DIODE 33VWM 53.3VC DO214AC



SMA6J28CA

Bourns Inc.
TVS DIODE 28VWM 45.4VC DO214AC



SMA6J28A-E3/61

Vishay General Semiconductor - Diodes Division
TVS DIODE 28VWM 51.6VC DO214AC



SMA6J33A

Bourns Inc.
TVS DIODE 33VWM 53.3VC DO214AC



SMA6J28CA-TR

STMicroelectronics
TVS DIODE 28VWM 51.6VC SMA



SMA6J40CA-TR

STMicroelectronics
TVS DIODE 40VWM 73.6VC SMA



SMA6J40A

Bourns Inc.
TVS DIODE 40VWM 64.5VC DO214AC



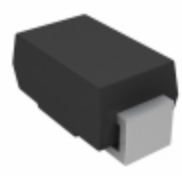
SMA6J40A-TR

STMicroelectronics
TVS DIODE 40VWM 73.6VC SMA



SMA6J5.0A

Bourns Inc.
TVS DIODE



SMA6J5.0A-E3/61

Vishay General Semiconductor - Diodes Division
TVS DIODE 5VWM 13.4VC DO214AC



SMA6J48A-TR

STMicroelectronics
TVS DIODE 48VWM 88.4VC SMA



SMA6J28A-TR

STMicroelectronics
TVS DIODE 28VWM 51.6VC SMA



SMA6J5.0A

Littelfuse Inc.
TVS DIODE 5VWM 9.2VC DO214AC



SMA6J30A-TP

Micro Commercial Co
Interface

Shipment

Delivery Time

In-stock items can be shipped within 24 hours. Some parts will be arranged for delivery within 1-2 days from the date all items arrive at our warehouse. And Allelco ships order once a day at about 17:00, except Sunday. Once the goods are shipped, the estimated delivery time depends on the shipping methods and Delivery destination. The table below shows are the logistic time for some common countries.

Delivery Cost

> Use your express account for shipment if you have one.

> Use our account for the shipment. Refer to the table below for the approximate charges.

(Different time frame / countries / package size has different price.)

Delivery Method

> Global Common Shipment by DHL / UPS / FedEx / TNT / EMS / SF we support.

> Others more shipping ways, please get in touch with your customer manager.

| Common Countries Logistic Time Reference | | |
|--|----------------|--------------------|
| Region | Country | Logistic Time(Day) |
| America | United States | 5 |
| | Brazil | 7 |
| Europe | Germany | 5 |
| | United Kingdom | 4 |
| | Italy | 5 |
| Oceania | Australia | 6 |
| | New Zealand | 7 |
| Asia | India | 6 |
| | Japan | 7 |
| Middle East | Israel | 6 |

| DHL & FedEx Shipment Charges Reference | |
|--|----------------------|
| Shipment charges(KG) | Reference DHL(USD\$) |
| 0.00kg-1.00kg | USD\$60.00 |
| 1.00kg-2.00kg | USD\$70.00 |
| 2.00kg-3.00kg | USD\$80.00 |

Note: The above table is for reference only. There may have some data bias for the uncontrollable factors.




Contact us if you have any questions.

Payment Support



The payment method can be chosen from the methods shown below:
Wire Transfer (T/T, Bank Transfer), Western Union, Credit card, PayPal.



Your Faithful Supply Chain Partner -

 Efficient Supply Management
 Cost-Saving Procurement
 Fast Sourcing & Delivery

Contact us if you have any questions.

 Phone
 +00852 9146 4856
 Email
 info@allelco.com

Certifications & Memberships



View More



Contact us

Address: Flat/Rm C 13/F Harvard Commercial Building 105-111 Thomson Road, Wan Chai, Hong Kong
Phone: +00852 9146 4856
Fax: +00852 3010 8510
Email: info@Allelco.com

Copyright © 2012-2023 AllelcoElec.com. All rights reserved.