



VS-8EWS16S-M3

Manufacturer Part Number	VS-8EWS16S-M3
Manufacturer	Vishay General Semiconductor – Diodes Division
Allelco Part Number	32D-VS-8EWS16S-M3
ECAD Model	Request Free CAD Models
Parts Description	DIODE GEN PURP 1.6KV 8A TO252
Package	TO-252-3, DPak (2 Leads + Tab), SC-63
Data sheet	VS-8EWS16S-M3.pdf
RoHs Status	ROHS3 Compliant



Get a Quote

VS-8EWS16S-M3 - Vishay General Semiconductor - Diodes Division. New Original in Stock. Download Linear Technology VS-8EWS16S-M3 datasheet/specifications on AllelcoElec.com.
Request a quote for VS-8EWS16S-M3, please send us email: info@allelco.com

Specifications

VS-8EWS16S-M3 Tech Specifications
VS-8EWS16S-M3 - Vishay General Semiconductor - Diodes Division technical specifications, attributes, parameters

Product Attribute	Attribute Value	Product Attribute	Attribute Value
Manufacturer	Vishay General Semiconductor – Diodes Division	Package	Tube
Voltage - Forward (Vf) (Max) @ If	1.1 V @ 8 A	Operating Temperature - Junction	-40°C ~ 150°C
Voltage - DC Reverse (Vr) (Max)	1600 V	Mounting Type	Surface Mount
Technology	Standard	Current - Reverse Leakage @ Vr	50 µA @ 1600 V
Supplier Device Package	TO-252, (D-Pak)	Current - Average Rectified (Io)	8A
Speed	Standard Recovery >500ns, > 200mA (Io)	Capacitance @ Vr, F	-
Series	-	Base Product Number	8EWS16
Package / Case	TO-252-3, DPak (2 Leads + Tab), SC-63		

Parts with Similar Specifications

The three parts on the right have similar specifications to Vishay General Semiconductor - Diodes Division VS-8EWS16S-M3

Product Attribute	NO PICTURE			
Part Number	VS-8EWS16S-M3	VS-8EWS08STRLPBF	VS-8EWS12SPBF	VS-8EWS16STRR-M3
Manufacturer	Vishay General Semiconductor - Diodes Division	Vishay General Semiconductor - Diodes Division	Vishay General Semiconductor - Diodes Division	Vishay General Semiconductor - Diodes Division
Series	-	-	-	FRED Pt®
Capacitance @ Vr, F	-	-	-	-
Voltage - DC Reverse (Vr) (Max)	1600 V	800 V	1200 V	1600 V
Current - Reverse Leakage @ Vr	50 µA @ 1600 V	50 µA @ 800 V	50 µA @ 1200 V	50 µA @ 1600 V
Package / Case	TO-252-3, DPak (2 Leads + Tab), SC-63	TO-252-3, DPak (2 Leads + Tab), SC-63	TO-252-3, DPak (2 Leads + Tab), SC-63	TO-252-3, DPak (2 Leads + Tab), SC-63
Package	Tube	Tape & Reel (TR)	Tube	Tape & Reel (TR)
Mounting Type	Surface Mount	Surface Mount	Surface Mount	Surface Mount
Operating Temperature - Junction	-40°C ~ 150°C	-55°C ~ 150°C	-55°C ~ 150°C	-40°C ~ 150°C
Current - Average Rectified (Io)	8A	8A	8A	8A
Supplier Device Package	TO-252, (D-Pak)	D-PAK (TO-252AA)	TO-252, (D-Pak)	D-PAK (TO-252AA)
Speed	Standard Recovery >500ns, > 200mA (Io)	Fast Recovery =< 500ns, > 200mA (Io)	Standard Recovery >500ns, > 200mA (Io)	Standard Recovery >500ns, > 200mA (Io)
Technology	Standard	Standard	Standard	Standard
Voltage - Forward (Vf) (Max) @ If	1.1 V @ 8 A	1.1 V @ 8 A	1.1 V @ 8 A	1.1 V @ 8 A
Base Product Number	8EWS16	8EWS08	8EWS12	8EWS16

VS-8EWS16S-M3 Datasheet PDF

Download VS-8EWS16S-M3 pdf datasheets and Vishay General Semiconductor - Diodes Division documentation for VS-8EWS16S-M3 - Vishay General Semiconductor - Diodes Division.

Datasheets

VS-8EWS16S-M3.pdf

PCN Other

DD-018-2015-Rev-00 25/May/2015.pdf

PCN Obsolescence/ EOL

Multiple Devices Improvements 12/Sep/2016.pdf

PCN Assembly/Origin

LeadFrame/Mold Compound Chgs 12/Sep/2016.pdf

Customers Also Interested in

Recommended Products

**VS-8EWS08STRLPBF**Vishay General Semiconductor - Diodes Division
DIODE GEN PURP 800V 8A D-PAK**VS-8EWS12SPBF**Vishay General Semiconductor - Diodes Division
DIODE GEN PURP 1.2KV 8A TO252**VS-8EWS16STRR-M3**Vishay General Semiconductor - Diodes Division
DIODE GEN PURP 1.6KV 8A D-PAK**VS-8EWS08S-M3**Vishay General Semiconductor - Diodes Division
DIODE GEN PURP 800V 8A DPAK**VS-8EWS08STR-M3**Vishay General Semiconductor - Diodes Division
DIODE GEN PURP 800V 8A D-PAK**VS-8EWX06FN-M3**Vishay General Semiconductor - Diodes Division
DIODE GEN PURP 600V 8A TO252**VS-8EWS12STRLPBF**Vishay General Semiconductor - Diodes Division
DIODE GEN PURP 1.2KV 8A D-PAK**VS-8EWS08STRPBF**Vishay General Semiconductor - Diodes Division
DIODE GEN PURP 800V 8A D-PAK**VS-8EWS12SLHM3**Vishay General Semiconductor - Diodes Division
DIODE GEN PURP 1.2KV 8A DPAK**VS-8EWS16SLHM3**Vishay General Semiconductor - Diodes Division
DIODE GEN PURP 1.6KV 8A DPAK**VS-8EWS12S-M3**Vishay General Semiconductor - Diodes Division
DIODE GEN PURP 1.2KV 8A DPAK**VS-8TQ100PBF**Vishay General Semiconductor - Diodes Division
DIODE SCHOTTKY 100V 8A TO220AC**VS-8EWS10STRL-M3**Vishay General Semiconductor - Diodes Division
DIODE GEN PURP 1KV 8A DPAK**VS-8EWX06FNTR-M3**Vishay General Semiconductor - Diodes Division
DIODE GEN PURP 600V 8A DPAK**VS-8EWS08STRL-M3**Vishay General Semiconductor - Diodes Division
DIODE GEN PURP 800V 8A D-PAK**VS-8S2TH06I-M**Vishay General Semiconductor - Diodes Division
DIODE GEN PURP 600V 8A TO220AC**VS-8EWS16STRRPBF**Vishay General Semiconductor - Diodes Division
DIODE GEN PURP 1.6KV 8A D-PAK**VS-8EWS16STRPBF**Vishay General Semiconductor - Diodes Division
DIODE GEN PURP 1.6KV 8A D-PAK

Shipment

Delivery Time

In-stock items can be shipped within 24 hours. Some parts will be arranged for delivery within 1-2 days from the date all items arrive at our warehouse. And Alleco ships order once a day at about 17:00, except Sunday. Once the goods are shipped, the estimated delivery time depends on the shipping methods and Delivery destination. The table below shows are the logistic time for some common countries.

Delivery Cost

> Use your express account for shipment if you have one.

> Use our account for the shipment. Refer to the table below for the approximate charges.

(Different time frame / countries / package size has different price.)

Delivery Method

> Global Common Shipment by DHL / UPS / FedEx / TNT / EMS / SF we support.

> Others more shipping ways, please get in touch with your customer manager.

Common Countries Logistic Time Reference		
Region	Country	Logistic Time(Day)
America	United States	5
	Brazil	7
Europe	Germany	5
	United Kingdom	4
	Italy	5
Oceania	Australia	6
	New Zealand	7
Asia	India	6
	Japan	7
Middle East	Israel	6

DHL & FedEx Shipment Charges Reference	
Shipment charges(KG)	Reference DHL(USD\$)
0.00kg-1.00kg	USD\$60.00
1.00kg-2.00kg	USD\$70.00
2.00kg-3.00kg	USD\$80.00

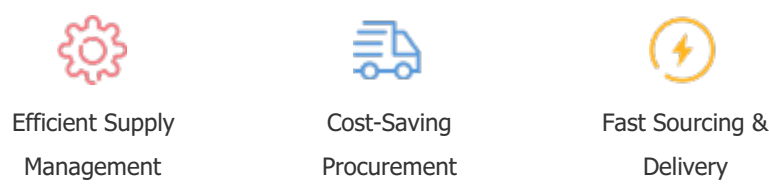
Note: The above table is for reference only. There may have some data bias for the uncontrollable factors.
Contact us if you have any questions.

Payment Support

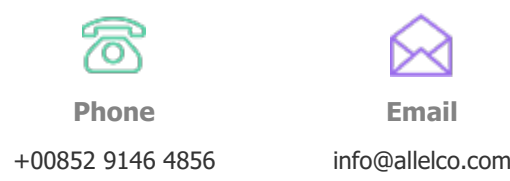
The payment method can be chosen from the methods shown below:
Wire Transfer (T/T, Bank Transfer), Western Union, Credit card, PayPal.



Your Faithful Supply Chain Partner -



Contact us if you have any questions.



Certifications & Memberships



[View More](#)