



NRVUD340T4G

| | |
|--------------------------|---------------------------------------|
| Manufacturer Part Number | NRVUD340T4G |
| Manufacturer | onsemi |
| Allelco Part Number | 32D-NRVUD340T4G |
| ECAD Model | Request Free CAD Models |
| Parts Description | DIODE GEN PURP 400V 3A DPAK |
| Package | TO-252-3, DPak (2 Leads + Tab), SC-63 |
| Data sheet | NRVUD340T4G.pdf |
| RoHs Status | ROHS3 Compliant |



Get a Quote

NRVUD340T4G - onsemi.New Original in Stock. Download Linear Technology NRVUD340T4G datasheet/specifications on AllelcoElec.com.

Request a quote for NRVUD340T4G, please send us email: info@allelco.com

Specifications

NRVUD340T4G Tech Specifications

NRVUD340T4G - onsemi technical specifications, attributes, parameters

| Product Attribute | Attribute Value | Product Attribute | Attribute Value |
|-----------------------------------|--------------------------------------|----------------------------------|---------------------------------------|
| Manufacturer | onsemi | Package / Case | TO-252-3, DPak (2 Leads + Tab), SC-63 |
| Voltage - Forward (Vf) (Max) @ If | 1.15 V @ 3 A | Package | Tape & Reel (TR) |
| Voltage - DC Reverse (Vr) (Max) | 400 V | Operating Temperature - Junction | -65°C ~ 175°C |
| Technology | Standard | Mounting Type | Surface Mount |
| Supplier Device Package | DPAK | Current - Reverse Leakage @ Vr | 5 µA @ 400 V |
| Speed | Fast Recovery =< 500ns, > 200mA (Io) | Current - Average Rectified (Io) | 3A |
| Series | Automotive, AEC-Q101 | Capacitance @ Vr, F | - |
| Reverse Recovery Time (trr) | 50 ns | Base Product Number | NRVUD340 |

Parts with Similar Specifications

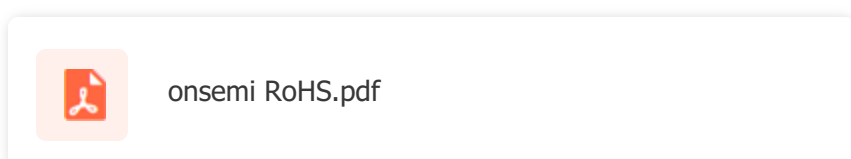
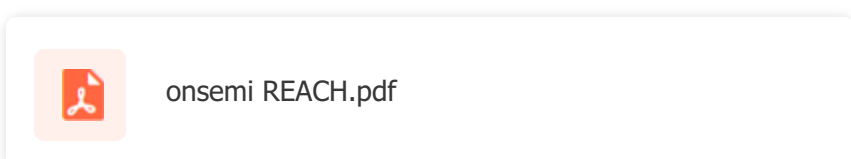
The three parts on the right have similar specifications to onsemi NRVUD340T4G

| Product Attribute | | | | |
|-----------------------------------|---------------------------------------|--------------------------------------|---------------------------------------|--------------------------------------|
| Part Number | NRVUD340T4G | NRVUA220VT3G | NRVUD550PFT4G | NRVUA140VT3G |
| Manufacturer | onsemi | onsemi | onsemi | onsemi |
| Voltage - Forward (Vf) (Max) @ If | 1.15 V @ 3 A | 950 mV @ 2 A | 1.15 V @ 5 A | 1.1 V @ 1 A |
| Operating Temperature - Junction | -65°C ~ 175°C | -65°C ~ 175°C | -65°C ~ 175°C | -65°C ~ 175°C |
| Capacitance @ Vr, F | - | - | - | - |
| Technology | Standard | Standard | Standard | Standard |
| Package / Case | TO-252-3, DPak (2 Leads + Tab), SC-63 | DO-214AC, SMA | TO-252-3, DPak (2 Leads + Tab), SC-63 | DO-214AC, SMA |
| Package | Tape & Reel (TR) | Tape & Reel (TR) | Tape & Reel (TR) | Tape & Reel (TR) |
| Voltage - DC Reverse (Vr) (Max) | 400 V | 200 V | 520 V | 400 V |
| Current - Reverse Leakage @ Vr | 5 µA @ 400 V | 2 µA @ 200 V | 5 µA @ 520 V | 5 µA @ 400 V |
| Speed | Fast Recovery =< 500ns, > 200mA (Io) | Fast Recovery =< 500ns, > 200mA (Io) | Fast Recovery =< 500ns, > 200mA (Io) | Fast Recovery =< 500ns, > 200mA (Io) |
| Series | Automotive, AEC-Q101 | Automotive, AEC-Q101 | Automotive, AEC-Q101 | Automotive, AEC-Q101 |
| Supplier Device Package | DPAK | SMA | DPAK | SMA |
| Current - Average Rectified (Io) | 3A | 2A | 5A | 2A |
| Mounting Type | Surface Mount | Surface Mount | Surface Mount | Surface Mount |
| Base Product Number | NRVUD340 | NRVUA220 | NRVUD550 | NRVUA140 |
| Reverse Recovery Time (trr) | 50 ns | 35 ns | 95 ns | 65 ns |

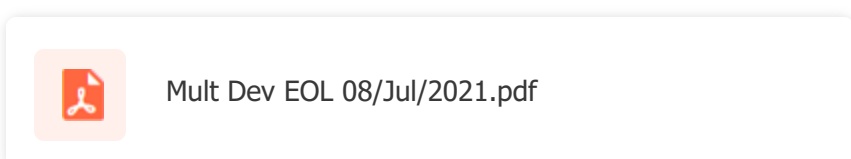
NRVUD340T4G Datasheet PDF

Download NRVUD340T4G pdf datasheets and onsemi documentation for NRVUD340T4G - onsemi.

Environmental Information



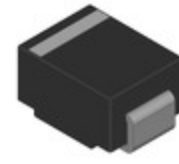
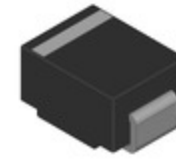
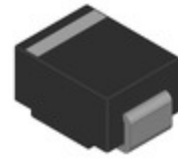
PCN Obsolescence/ EOL



Customers Also Interested in

Recommended Products

| | | | | | |
|----------------------------|--------------------------------|-----------------------------|----------------------------|---------------------------------|----------------------------|
| | | | | | |
| NRVUA220VT3G | NRVUB1620CTT4G | NRVUD550PFT4G | NRVUA140VT3G | NRVUS1FFA | NRVUS110VT3G |
| onsemi | onsemi | onsemi | onsemi | onsemi | onsemi |
| DIODE GEN PURP 200V 2A SMA | DIODE GEN PURP 200V 8A D2PAK-3 | DIODE GEN PURP 520V 5A DPAK | DIODE GEN PURP 400V 2A SMA | DIODE GEN PURP 300V 1A SOD123FL | DIODE GEN PURP 100V 2A SMB |



NRVUS1DFA

onsemi
DIODE GEN PURP 200V 1A
SOD123FL

NRVUA120VT3G

onsemi
DIODE GEN PURP 200V 1A SMA

NRVUS120VT3G

onsemi
DIODE GEN PURP 200V 2A SMB

NRVUD320W1T4G

onsemi
DIODE GEN PURP 200V 3A DPAK

NRVUS160VT3G

onsemi
DIODE GEN PURP 600V 2A SMB

NRVUHS160VT3G

onsemi
DIODE GEN PURP 600V 1A SMB



NRVUA210VT3G

onsemi
DIODE GEN PURP 100V 2A SMA



NRVUA160VT3G

onsemi
DIODE GEN PURP 600V 2A SMA



NRVUB1660CTT4G

onsemi
DIODE ARRAY GP 600V 8A D2PAK



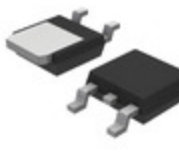
NRVUD340T4G-VF01

onsemi
DIODE GEN PURP 400V 3A DPAK



NRVUD620CTT4G

onsemi
DIODE ARRAY GP 200V 3A DPAK



NRVUD320VT4G

onsemi
DIODE GEN PURP 200V 3A DPAK

Shipment

Delivery Time

In-stock items can be shipped within 24 hours. Some parts will be arranged for delivery within 1-2 days from the date all items arrive at our warehouse. And Allelco ships order once a day at about 17:00, except Sunday. Once the goods are shipped, the estimated delivery time depends on the shipping methods and Delivery destination. The table below shows are the logistic time for some common countries.

Delivery Cost

> Use your express account for shipment if you have one.

> Use our account for the shipment. Refer to the table below for the approximate charges.

(Different time frame / countries / package size has different price.)

Delivery Method

> Global Common Shipment by DHL / UPS / FedEx / TNT / EMS / SF we support.

> Others more shipping ways, please get in touch with your customer manager.

Common Countries Logistic Time Reference

| Region | Country | Logistic Time(Day) |
|-------------|----------------|--------------------|
| America | United States | 5 |
| | Brazil | 7 |
| Europe | Germany | 5 |
| | United Kingdom | 4 |
| | Italy | 5 |
| Oceania | Australia | 6 |
| | New Zealand | 7 |
| Asia | India | 6 |
| | Japan | 7 |
| Middle East | Israel | 6 |

DHL & FedEx Shipment Charges Reference

| Shipment charges(KG) | Reference DHL(USD\$) |
|----------------------|----------------------|
| 0.00kg-1.00kg | USD\$60.00 |
| 1.00kg-2.00kg | USD\$70.00 |
| 2.00kg-3.00kg | USD\$80.00 |

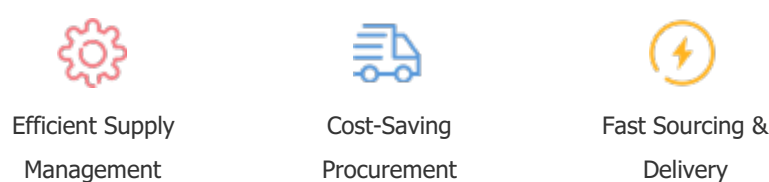
Note: The above table is for reference only. There may have some data bias for the uncontrollable factors. Contact us if you have any questions.

Payment Support

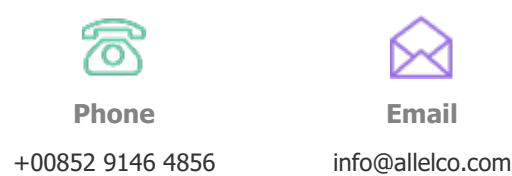
The payment method can be chosen from the methods shown below:
Wire Transfer (T/T, Bank Transfer), Western Union, Credit card, PayPal.



Your Faithful Supply Chain Partner -



Contact us if you have any questions.



Certifications & Memberships



View More



Contact us

Address: Flat/Rm C 13/F Harvard Commercial Building 105-111 Thomson Road, Wan Chai, Hong Kong

Phone: +00852 9146 4856

Fax: +00852 3010 8510

Email: info@Allelco.com

Copyright © 2012-2023 AllelcoElec.com. All rights reserved.