



AT25DF161-SH-T

Manufacturer Part Number	AT25DF161-SH-T
Manufacturer	Microchip Technology
Allelco Part Number	32D-AT25DF161-SH-T
ECAD Model	Request Free CAD Models
Parts Description	IC FLASH 16MBIT SPI 100MHZ 8SOIC
Package	8-SOIC (0.209', 5.30mm Width)
Data sheet	AT25DF161-SH-T.pdf
RoHs Status	ROHS3 Compliant



Get a Quote

AT25DF161-SH-T - Microchip Technology. New Original in Stock. Download Linear Technology AT25DF161-SH-T datasheet/specifications on AllelcoElec.com.
Request a quote for AT25DF161-SH-T, please send us email: info@allelco.com

Specifications

AT25DF161-SH-T Tech Specifications
AT25DF161-SH-T - Microchip Technology technical specifications, attributes, parameters

Product Attribute	Attribute Value	Product Attribute	Attribute Value
Manufacturer	Microchip Technology	Mounting Type	Surface Mount
Write Cycle Time - Word, Page	7µs, 3ms	Memory Type	Non-Volatile
Voltage - Supply	2.7V ~ 3.6V	Memory Size	16Mbit
Technology	FLASH	Memory Organization	2M x 8
Supplier Device Package	8-SOIC	Memory Interface	SPI
Series	-	Memory Format	FLASH
Package / Case	8-SOIC (0.209', 5.30mm Width)	Clock Frequency	100 MHz
Package	Tape & Reel (TR)	Base Product Number	AT25DF161
Operating Temperature	-40°C ~ 85°C (TC)		

Parts with Similar Specifications

The three parts on the right have similar specifications to Microchip Technology AT25DF161-SH-T

Product Attribute				
Part Number	AT25DF161-SH-T	AT25DF321A-MH-T	AT25DF161-MH-T	AT25DF081A-SSH-B
Manufacturer	Microchip Technology	Adesto Technologies	Microchip Technology	Adesto Technologies
Voltage - Supply	2.7V ~ 3.6V	2.7V ~ 3.6V	2.7V ~ 3.6V	2.7V ~ 3.6V
Memory Format	FLASH	FLASH	FLASH	FLASH
Technology	FLASH	FLASH	FLASH	FLASH
Operating Temperature	-40°C ~ 85°C (TC)	-40°C ~ 85°C (TC)	-40°C ~ 85°C (TC)	-40°C ~ 85°C (TC)
Memory Organization	2M x 8	256 Bytes x 16384 pages	2M x 8	256 Bytes x 4096 pages
Clock Frequency	100 MHz	100 MHz	100 MHz	100 MHz
Memory Size	16Mbit	32Mbit	16Mbit	8Mbit
Package	Tape & Reel (TR)	Tape & Reel (TR)	Tape & Reel (TR)	Tube
Memory Interface	SPI	SPI	SPI	SPI
Package / Case	8-SOIC (0.209', 5.30mm Width)	8-UDFN Exposed Pad	8-UDFN Exposed Pad	8-SOIC (0.154", 3.90mm Width)
Supplier Device Package	8-SOIC	8-UDFN (5x6)	8-UDFN (5x6)	8-SOIC
Mounting Type	Surface Mount	Surface Mount	Surface Mount	Surface Mount
Base Product Number	AT25DF161	AT25DF321	AT25DF161	AT25DF081
Write Cycle Time - Word, Page	7µs, 3ms	7µs, 3ms	7µs, 3ms	7µs, 3ms
Memory Type	Non-Volatile	Non-Volatile	Non-Volatile	Non-Volatile
Series	-	-	-	-

AT25DF161-SH-T Datasheet PDF

Download AT25DF161-SH-T pdf datasheets and Microchip Technology documentation for AT25DF161-SH-T - Microchip Technology.

PCN Packaging

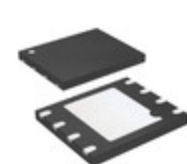
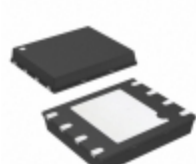
Transfer to Microchip/Label/Pkg 5/Sep/2016.pdf



PCN Obsolescence/ EOL

Cylindrical Battery Holders.pdf

Customers Also Interested in

Recommended Products



AT25DF081A-SSH Atmel (Microchip Technology)	AT25DF321A-MH-T Adesto Technologies IC FLASH 32MBIT SPI 100MHZ 8UDFN	AT25DF161-MH Atmel (Microchip Technology)	AT25DF161-MH-T Microchip Technology IC FLASH 16MBIT SPI 100MHZ 8UDFN	AT25DF081A-SSH-B Adesto Technologies IC FLASH 8MBIT SPI 100MHZ 8SOIC	AT25DF081A-SH-T Adesto Technologies IC FLASH 8MBIT SPI 100MHZ 8SOIC
					
AT25DF321A-SH Atmel (Microchip Technology)	AT25DF161-SH-T Adesto Technologies IC FLASH 16MBIT SPI 100MHZ 8SOIC	AT25DF161-SH-B Adesto Technologies IC FLASH 16MBIT SPI 100MHZ 8SOIC	AT25DF161-SSH-T Microchip Technology IC FLASH 16MBIT SPI 100MHZ 8SOIC	AT25DF256-MAHN-T Adesto Technologies IC FLASH 256KBIT SPI 100MHZ 8UDFN	AT25DF321A-SH-B Adesto Technologies IC FLASH 32MBIT SPI 100MHZ 8SOIC
					
AT25DF321-SU Adesto Technologies IC FLASH 32MBIT SPI 70MHZ 8SOIC	AT25DF081A-SSH-T Adesto Technologies IC FLASH 8MBIT SPI 100MHZ 8SOIC	AT25DF321-S3U Adesto Technologies IC FLASH 32MBIT SPI 70MHZ 16SOIC	AT25DF161-SSH-T Adesto Technologies IC FLASH 16MBIT SPI 100MHZ 8SOIC	AT25DF161-SH-B Microchip Technology IC FLASH 16MBIT SPI 100MHZ 8SOIC	AT25DF161-MH-Y Microchip Technology IC FLASH 16MBIT SPI 100MHZ 8UDFN

Shipment

Delivery Time

In-stock items can be shipped within 24 hours. Some parts will be arranged for delivery within 1-2 days from the date all items arrive at our warehouse. And Allelco ships order once a day at about 17:00, except Sunday. Once the goods are shipped, the estimated delivery time depends on the shipping methods and Delivery destination. The table below shows are the logistic time for some common countries.

Delivery Cost

- > Use your express account for shipment if you have one.
- > Use our account for the shipment. Refer to the table below for the approximate charges.

(Different time frame / countries / package size has different price.)

Delivery Method

- > Global Common Shipment by DHL / UPS / FedEx / TNT / EMS / SF we support.
- > Others more shipping ways, please get in touch with your customer manager.

Common Countries Logistic Time Reference		
Region	Country	Logistic Time(Day)
America	United States	5
	Brazil	7
Europe	Germany	5
	United Kingdom	4
	Italy	5
Oceania	Australia	6
	New Zealand	7
Asia	India	6
	Japan	7
Middle East	Israel	6

DHL & FedEx Shipment Charges Reference	
Shipment charges(KG)	Reference DHL(USD\$)
0.00kg-1.00kg	USD\$60.00
1.00kg-2.00kg	USD\$70.00
2.00kg-3.00kg	USD\$80.00

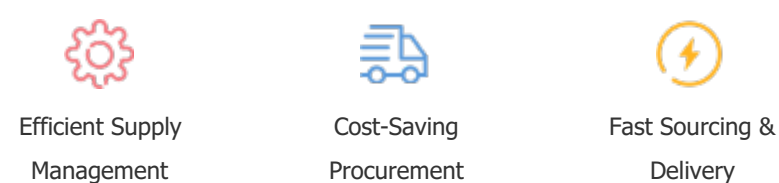
Note: The above table is for reference only. There may have some data bias for the uncontrollable factors.
Contact us if you have any questions.

Payment Support

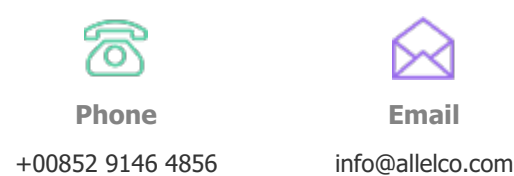
The payment method can be chosen from the methods shown below:
Wire Transfer (T/T, Bank Transfer), Western Union, Credit card, PayPal.



Your Faithful Supply Chain Partner -



Contact us if you have any questions.



Certifications & Memberships



[View More](#)