

Image may be representation.
See specifications for product details.



STP100NF04

Manufacturer Part Number	STP100NF04
Manufacturer	STMicroelectronics
Allelco Part Number	32D-STP100NF04
ECAD Model	PCB Symbol, Footprint & 3D Mode
Parts Description	MOSFET N-CH 40V 120A TO220AB
Package	TO-220-3
Data sheet	STP100NF04.pdf
RoHs Status	ROHS3 Compliant

Get a Quote

STP100NF04 - STMicroelectronics. New Original in Stock. Download Linear Technology STP100NF04 datasheet/specifications on AllelcoElec.com.
Request a quote for STP100NF04, please send us email: info@allelco.com

Specifications

STP100NF04 Tech Specifications
STP100NF04 - STMicroelectronics technical specifications, attributes, parameters

Product Attribute	Attribute Value	Product Attribute	Attribute Value
Manufacturer	STMicroelectronics	Operating Temperature	-55°C ~ 175°C (TJ)
Vgs(th) (Max) @ Id	4V @ 250µA	Mounting Type	Through Hole
Vgs (Max)	±20V	Input Capacitance (Ciss) (Max) @ Vds	5100 pF @ 25 V
Technology	MOSFET (Metal Oxide)	Gate Charge (Qg) (Max) @ Vgs	150 nC @ 10 V
Supplier Device Package	TO-220	FET Type	N-Channel
Series	Automotive, AEC-Q101, STripFET™ II	FET Feature	-
Rds On (Max) @ Id, Vgs	4.6mOhm @ 50A, 10V	Drive Voltage (Max Rds On, Min Rds On)	10V
Power Dissipation (Max)	300W (Tc)	Drain to Source Voltage (Vdss)	40 V
Package / Case	TO-220-3	Current - Continuous Drain (Id) @ 25°C	120A (Tc)
Package	Tube	Base Product Number	STP100

Parts with Similar Specifications

The three parts on the right have similar specifications to STMicroelectronics STP100NF04

Product Attribute				
Part Number	STP100NF04	STP105N3LL	STP100N10F7	STP10N60M2
Manufacturer	STMicroelectronics	STMicroelectronics	STMicroelectronics	STMicroelectronics
Package / Case	TO-220-3	TO-220-3	TO-220-3	TO-220-3
Technology	MOSFET (Metal Oxide)	MOSFET (Metal Oxide)	MOSFET (Metal Oxide)	MOSFET (Metal Oxide)
Mounting Type	Through Hole	Through Hole	Through Hole	Through Hole
Vgs (Max)	±20V	±20V	±20V	±25V
Vgs(th) (Max) @ Id	4V @ 250µA	2.5V @ 250µA	4.5V @ 250µA	4V @ 250µA
Power Dissipation (Max)	300W (Tc)	140W (Tc)	150W (Tc)	85W (Tc)
Input Capacitance (Ciss) (Max) @ Vds	5100 pF @ 25 V	3100 pF @ 25 V	4369 pF @ 50 V	400 pF @ 100 V
Drain to Source Voltage (Vdss)	40 V	30 V	100 V	600 V
FET Type	N-Channel	N-Channel	N-Channel	N-Channel
Gate Charge (Qg) (Max) @ Vgs	150 nC @ 10 V	42 nC @ 4.5 V	61 nC @ 10 V	13.5 nC @ 10 V
Drive Voltage (Max Rds On, Min Rds On)	10V	4.5V, 10V	10V	10V
Rds On (Max) @ Id, Vgs	4.6mOhm @ 50A, 10V	3.5mOhm @ 40A, 10V	8mOhm @ 40A, 10V	600mOhm @ 3A, 10V
Package	Tube	Tube	Tube	Tube
Series	Automotive, AEC-Q101, STripFET™ II	DeepGATE™, STripFET™ VI	DeepGATE™, STripFET™ VII	MDmesh™ II Plus
Operating Temperature	-55°C ~ 175°C (TJ)	175°C (TJ)	-55°C ~ 175°C (TJ)	-55°C ~ 150°C (TJ)
Supplier Device Package	TO-220	TO-220	TO-220	TO-220
Current - Continuous Drain (Id) @ 25°C	120A (Tc)	80A (Tc)	80A (Tc)	7.5A (Tc)
Base Product Number	STP100	STP105	STP100	STP10
FET Feature	-	-	-	-

STP100NF04 Datasheet PDF

Download STP100NF04 pdf datasheets and STMicroelectronics documentation for STP100NF04 - STMicroelectronics.

PCN Packaging

Box Label Chg 28/Jul/2016.pdf

Traceability 06/Mar/2017.pdf

PCN Assembly/Origin

Mult Devices Testing 10/May/2018.pdf

PCN Design/Specification



Customers Also Interested in

Recommended Products

STP105N3LL STMicroelectronics MOSFET N-CH 30V 80A TO220	STP100N10F5R STMicroelectronics	STP100NF04L STMicroelectronics	STP100N10F7 STMicroelectronics MOSFET N CH 100V 80A TO-220	STP1013 STANSON	STP10N10 STMicroelectronics
STP08DP05XTTR STMicroelectronics IC LED DRVR LIN 100MA 16HTSSOP	STP08DP05TTR STMicroelectronics IC LED DRVR LINEAR 100MA 16TSSOP	STP100NF03L-03 STMicroelectronics	STP10810 STMicroelectronics	STP100NF04 MOS STMicroelectronics	STP08DP05MTR STMicroelectronics IC LED DRIVER LINEAR 100MA 16SO
STP1032ALGA SUN	STP10N60M2 STMicroelectronics MOSFET N-CH 600V 7.5A TO220	STP08CP05XTTR STMicroelectronics IC LED DRVR LIN 100MA 16HTSSOP	STP10N60FI STMicroelectronics	STP100N6F7 STMicroelectronics MOSFET N-CH 60V 100A TO220	STP100N8F6 STMicroelectronics MOSFET N-CH 80V 100A TO220

Shipment

Delivery Time

In-stock items can be shipped within 24 hours. Some parts will be arranged for delivery within 1-2 days from the date all items arrive at our warehouse. And Allelco ships order once a day at about 17:00, except Sunday. Once the goods are shipped, the estimated delivery time depends on the shipping methods and Delivery destination. The table below shows are the logistic time for some common countries.

Delivery Cost

- > Use your express account for shipment if you have one.
 - > Use our account for the shipment. Refer to the table below for the approximate charges.
- (Different time frame / countries / package size has different price.)

Delivery Method

- > Global Common Shipment by DHL / UPS / FedEx / TNT / EMS / SF we support.
- > Others more shipping ways, please get in touch with your customer manager.

Common Countries Logistic Time Reference		
Region	Country	Logistic Time(Day)
America	United States	5
	Brazil	7
Europe	Germany	5
	United Kingdom	4
	Italy	5
Oceania	Australia	6
	New Zealand	7
Asia	India	6
	Japan	7
Middle East	Israel	6

DHL & FedEx Shipment Charges Reference	
Shipment charges(KG)	Reference DHL(USD\$)
0.00kg-1.00kg	USD\$60.00
1.00kg-2.00kg	USD\$70.00
2.00kg-3.00kg	USD\$80.00

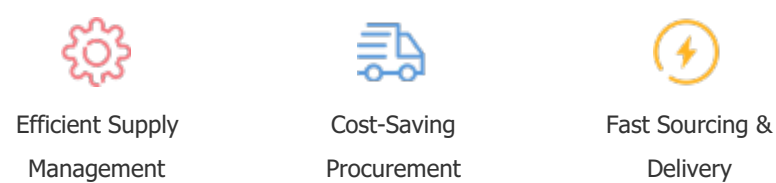
Note: The above table is for reference only. There may have some data bias for the uncontrollable factors. Contact us if you have any questions.

Payment Support

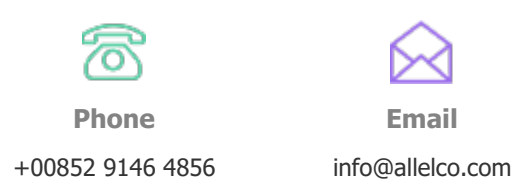
The payment method can be chosen from the methods shown below:
Wire Transfer (T/T, Bank Transfer), Western Union, Credit card, PayPal.



Your Faithful Supply Chain Partner -



Contact us if you have any questions.



Certifications & Memberships



[View More](#)