



Image may be representation.
See specifications for product details.



ICM7555ISA+T

Manufacturer Part Number	ICM7555ISA+T
Manufacturer	Maxim Integrated
Allelco Part Number	32D-ICM7555ISA+T
ECAD Model	Request Free CAD Models
Parts Description	IC OSC SGL TIMER 500KHZ 8-SOIC
Package	8-SOIC (0.154", 3.90mm Width)
Data sheet	ICM7555,56.pdf
RoHs Status	ROHS3 Compliant

Get a Quote

ICM7555ISA+T - Analog Devices Inc./Maxim Integrated. New Original in Stock. Download Linear Technology ICM7555ISA+T datasheet/specifications on AllelcoElec.com. Request a quote for ICM7555ISA+T, please send us email: info@allelco.com

Specifications

ICM7555ISA+T Tech Specifications
ICM7555ISA+T - Analog Devices Inc./Maxim Integrated technical specifications, attributes, parameters

Product Attribute	Attribute Value	Product Attribute	Attribute Value
Manufacturer	Maxim Integrated	Operating Temperature	-20°C ~ 85°C
Voltage - Supply	2V ~ 16.5V	Mounting Type	Surface Mount
Type	555 Type, Timer/Oscillator (Single)	Frequency	500kHz
Supplier Device Package	8-SOIC	Current - Supply	30 µA
Series	-	Count	-
Package / Case	8-SOIC (0.154", 3.90mm Width)	Base Product Number	ICM7555
Package	Tape & Reel (TR)		

Parts with Similar Specifications

The three parts on the right have similar specifications to Analog Devices Inc./Maxim Integrated ICM7555ISA+T

Product Attribute				
Part Number	ICM7555ISA+T	ICM7555MTV/883	ICM7555IPA+	ICM7555ISA-T
Manufacturer	Analog Devices Inc./Maxim Integrated	Rochester Electronics, LLC	Analog Devices Inc./Maxim Integrated	Analog Devices Inc./Maxim Integrated
Mounting Type	Surface Mount	-	Through Hole	Surface Mount
Voltage - Supply	2V ~ 16.5V	-	2V ~ 16.5V	2V ~ 16.5V
Count	-	-	-	-
Series	-	*	-	-
Package / Case	8-SOIC (0.154", 3.90mm Width)	-	8-DIP (0.300", 7.62mm)	8-SOIC (0.154", 3.90mm Width)
Package	Tape & Reel (TR)	Bulk	Tube	Tape & Reel (TR)
Current - Supply	30 µA	-	30 µA	30 µA
Frequency	500kHz	-	500kHz	500kHz
Operating Temperature	-20°C ~ 85°C	-	-20°C ~ 85°C	-20°C ~ 85°C
Base Product Number	ICM7555	-	ICM7555	ICM7555
Type	555 Type, Timer/Oscillator (Single)	-	555 Type, Timer/Oscillator (Single)	555 Type, Timer/Oscillator (Single)
Supplier Device Package	8-SOIC	-	8-PDIP	8-SOIC

ICM7555ISA+T Datasheet PDF

Download ICM7555ISA+T pdf datasheets and Analog Devices Inc./Maxim Integrated documentation for ICM7555ISA+T - Analog Devices Inc./Maxim Integrated.

Datasheets

[ICM7555,56.pdf](#)

Environmental Information

[Maxim Integrated RoHS Cert.pdf](#)

[Red Phosphorous Certificate.pdf](#)

[Material Declaration ICM7555ISA+T.pdf](#)

Application Notes

[ASK Transmitter/Receiver Pair Serves as an Automot.pdf](#)

[Reference Design for a 3S3P Rear Combination Lamp .pdf](#)

[Simple Solutions for a Single-Device Pulse-Width M.pdf](#)

Customers Also Interested in

Recommended Products



ICM7555MTV/883
Rochester Electronics, LLC
DUAL MARKED (5962-8950303GA)



ICM7555IPA+
Analog Devices Inc./Maxim Integrated
IC OSC SINGLE TIMER 500KHZ 8DIP



ICM7555ISA-T
Analog Devices Inc./Maxim Integrated
IC OSC SGL TIMER 500KHZ 8-SOIC



ICM7555MJA
Analog Devices / Maxim Integrated



ICM7555MTV
HARRIS



ICM7555M
HG/HX



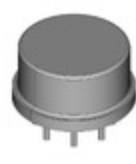
ICM7555IPAZ

Renesas Electronics America Inc
IC OSC SINGLE TIMER 1MHZ 8DIP



ICM7555SMTV

ITS



ICM7555ITV

Analog Devices Inc./Maxim
Integrated
GENERAL PURPOSE RC TIMER



ICM7555IPA

Renesas Electronics America Inc
IC OSC SINGLE TIMER 1MHZ 8-DIP



ICM7555ISA

Analog Devices Inc./Maxim
Integrated
IC OSC SGL TIMER 500KHZ 8-SOIC



ICM7555ID/01

Freescale / NXP Semiconductors



ICM7555ISA+

Analog Devices Inc./Maxim
Integrated
IC OSC SGL TIMER 500KHZ 8-SOIC



ICM7555IDT

Freescale / NXP Semiconductors



ICM7555IPA

Intersil
GENERAL PURPOSE RC TIMER



ICM7555MJA+

Analog Devices / Maxim
Integrated



ICM7555IN

Freescale / NXP Semiconductors



ICM7555IPA

Analog Devices Inc./Maxim
Integrated
IC OSC SINGLE TIMER 500KHZ 8DIP

Shipment

Delivery Time

In-stock items can be shipped within 24 hours. Some parts will be arranged for delivery within 1-2 days from the date all items arrive at our warehouse. And Allelco ships order once a day at about 17:00, except Sunday. Once the goods are shipped, the estimated delivery time depends on the shipping methods and Delivery destination. The table below shows are the logistic time for some common countries.

Delivery Cost

> Use your express account for shipment if you have one.

> Use our account for the shipment. Refer to the table below for the approximate charges.

(Different time frame / countries / package size has different price.)

Delivery Method

> Global Common Shipment by DHL / UPS / FedEx / TNT / EMS / SF we support.

> Others more shipping ways, please get in touch with your customer manager.

Common Countries Logistic Time Reference		
Region	Country	Logistic Time(Day)
America	United States	5
	Brazil	7
Europe	Germany	5
	United Kingdom	4
	Italy	5
Oceania	Australia	6
	New Zealand	7
Asia	India	6
	Japan	7
Middle East	Israel	6

DHL & FedEx Shipment Charges Reference	
Shipment charges(KG)	Reference DHL(USD\$)
0.00kg-1.00kg	USD\$60.00
1.00kg-2.00kg	USD\$70.00
2.00kg-3.00kg	USD\$80.00

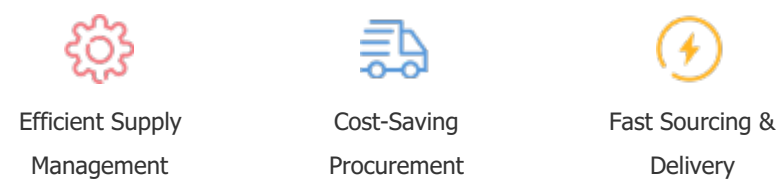
Note: The above table is for reference only. There may have some data bias for the uncontrollable factors.
Contact us if you have any questions.

Payment Support

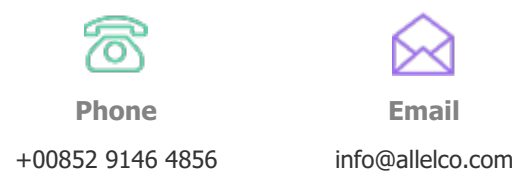
The payment method can be chosen from the methods shown below:
Wire Transfer (T/T, Bank Transfer), Western Union, Credit card,
PayPal.



Your Faithful Supply Chain Partner -



Contact us if you have any questions.



Certifications & Memberships



View More



Contact us

Address: Flat/Rm C 13/F Harvard Commercial Building 105-111 Thomson Road, Wan Chai, Hong Kong

Phone: +00852 9146 4856

Fax: +00852 3010 8510

Email: info@Allelco.com

Copyright © 2012-2023 AllelcoElec.com. All rights reserved.