

Image may be representation.  
See specifications for product details.



## AD5262BRUZ200

Manufacturer Part Number	<b>AD5262BRUZ200</b>
Manufacturer	<b>Analog Devices, Inc.</b>
Allelco Part Number	32D-AD5262BRUZ200
ECAD Model	PCB Symbol, Footprint & 3D Mode
Parts Description	IC DGT POT 200KOHM 256TP 16TSSOP
Package	16-TSSOP (0.173", 4.40mm Width)
Data sheet	<b>AD5260,62.pdf</b>
RoHs Status	<b>ROHS3 Compliant</b>

**Get a Quote**

AD5262BRUZ200 - Analog Devices Inc..New Original in Stock. Download Linear Technology AD5262BRUZ200 datasheet/specifications on AllelcoElec.com.  
Request a quote for AD5262BRUZ200, please send us email: [info@allelco.com](mailto:info@allelco.com)

### Specifications

AD5262BRUZ200 Tech Specifications  
AD5262BRUZ200 - Analog Devices Inc. technical specifications, attributes, parameters

Product Attribute	Attribute Value	Product Attribute	Attribute Value
Manufacturer	Analog Devices, Inc.	Package	Tube
Voltage - Supply	4.5V ~ 16.5V, ±5V	Operating Temperature	-40°C ~ 85°C
Tolerance	±30%	Number of Taps	256
Temperature Coefficient (Typ)	35ppm/°C	Number of Circuits	2
Taper	Linear	Mounting Type	Surface Mount
Supplier Device Package	16-TSSOP	Memory Type	Volatile
Series	-	Interface	SPI
Resistance - Wiper (Ohms) (Typ)	60	Features	Cascade Pin
Resistance (Ohms)	200k	Configuration	Potentiometer
Package / Case	16-TSSOP (0.173", 4.40mm Width)	Base Product Number	AD5262

### Parts with Similar Specifications

The three parts on the right have similar specifications to Analog Devices Inc. AD5262BRUZ200

Product Attribute				
Part Number	AD5262BRUZ200	AD5263BRUZ200-R7	AD5262BRUZ20	AD5262BRUZ50
Manufacturer	Analog Devices Inc.	Analog Devices Inc.	Analog Devices Inc.	Analog Devices Inc.
Series	-	-	-	-
Base Product Number	AD5262	AD5263	AD5262	AD5262
Voltage - Supply	4.5V ~ 16.5V, ±5V	4.5V ~ 16.5V, ±4.5V ~ 7.5V	4.5V ~ 16.5V, ±5V	4.5V ~ 16.5V, ±5V
Supplier Device Package	16-TSSOP	24-TSSOP	16-TSSOP	16-TSSOP
Taper	Linear	Linear	Linear	Linear
Operating Temperature	-40°C ~ 85°C	-40°C ~ 125°C	-40°C ~ 85°C	-40°C ~ 85°C
Memory Type	Volatile	Volatile	Volatile	Volatile
Features	Cascade Pin	Cascade Pin, Selectable Address	Cascade Pin	Cascade Pin
Package / Case	16-TSSOP (0.173", 4.40mm Width)	24-TSSOP (0.173", 4.40mm Width)	16-TSSOP (0.173", 4.40mm Width)	16-TSSOP (0.173", 4.40mm Width)
Number of Taps	256	256	256	256
Resistance - Wiper (Ohms) (Typ)	60	60	60	60
Resistance (Ohms)	200k	200k	20k	50k
Tolerance	±30%	±30%	±30%	±30%
Configuration	Potentiometer	Potentiometer	Potentiometer	Potentiometer
Number of Circuits	2	4	2	2
Interface	SPI	I <sup>2</sup> C, SPI	SPI	SPI
Temperature Coefficient (Typ)	35ppm/°C	30ppm/°C	35ppm/°C	35ppm/°C
Mounting Type	Surface Mount	Surface Mount	Surface Mount	Surface Mount
Package	Tube	Tape & Reel (TR)	Tube	Tube

### AD5262BRUZ200 Datasheet PDF

Download AD5262BRUZ200 pdf datasheets and Analog Devices Inc. documentation for AD5262BRUZ200 - Analog Devices Inc..

#### Datasheets

AD5260,62.pdf

### Customers Also Interested in

#### Recommended Products



### AD5262

ADI (Analog Devices, Inc.)

### AD5263BRUZ200-R7

Analog Devices Inc.  
IC DGT POT 200KOHM 256TP  
24TSSOP

### AD5262BRU20

Analog Devices Inc.  
IC DGT POT 20KOHM 256TAP  
16TSSOP

### AD5262BRUZ50

Analog Devices Inc.  
IC DGT POT 50KOHM 256TAP  
16TSSOP

### AD5262BRUZ20-RL7

Analog Devices Inc.  
IC DGT POT 20KOHM 256TAP  
16TSSOP

### AD5263BRUZ20

Analog Devices Inc.  
IC DGT POT 20KOHM 256TAP  
24TSSOP



### AD5260BRUZ50-REEL7

Analog Devices Inc.  
IC DGT POT 50KOHM 256TAP  
14TSSOP



### AD5263BRUZ200

Analog Devices Inc.  
IC DGT POT 50KOHM 256TP  
24TSSOP



### AD5263BRUZ20-REEL7

ADI (Analog Devices, Inc.)



### AD5262BRUZ200-RL7

Analog Devices Inc.  
IC DGT POT 200KOHM 256TP  
16TSSOP



### AD5262BRU

ADI (Analog Devices, Inc.)



### AD5260BRUZ200-RL7

Analog Devices Inc.  
IC DGT POT 200KOHM 256TP  
14TSSOP



### AD5260BRUZ20-RL7

Analog Devices Inc.  
IC DGT POT 20KOHM 256TAP  
14TSSOP



### AD5262BRUZ50-RL7

Analog Devices Inc.  
IC DGT POT 50KOHM 256TAP  
16TSSOP



### AD5262BRU50

Analog Devices Inc.  
IC DGT POT 50KOHM 256TAP  
16TSSOP



### AD5262BRUZ20

Analog Devices Inc.  
IC DGT POT 20KOHM 256TAP  
16TSSOP



### AD5263BRUZ20-REEL7

Analog Devices Inc.  
IC DGT POT 20KOHM 256TAP  
24TSSOP



### AD5262BRUZ20-RL

ADI (Analog Devices, Inc.)

## Shipment

### Delivery Time

In-stock items can be shipped within 24 hours. Some parts will be arranged for delivery within 1-2 days from the date all items arrive at our warehouse. And Alleco ships order once a day at about 17:00, except Sunday. Once the goods are shipped, the estimated delivery time depends on the shipping methods and Delivery destination. The table below shows are the logistic time for some common countries.

### Delivery Cost

> Use your express account for shipment if you have one.

> Use our account for the shipment. Refer to the table below for the approximate charges.

(Different time frame / countries / package size has different price.)

### Delivery Method

> Global Common Shipment by DHL / UPS / FedEx / TNT / EMS / SF we support.

> Others more shipping ways, please get in touch with your customer manager.

Common Countries Logistic Time Reference		
Region	Country	Logistic Time(Day)
America	United States	5
	Brazil	7
Europe	Germany	5
	United Kingdom	4
	Italy	5
Oceania	Australia	6
	New Zealand	7
Asia	India	6
	Japan	7
Middle East	Israel	6

DHL & FedEx Shipment Charges Reference	
Shipment charges(KG)	Reference DHL(USD\$)
0.00kg-1.00kg	USD\$60.00
1.00kg-2.00kg	USD\$70.00
2.00kg-3.00kg	USD\$80.00

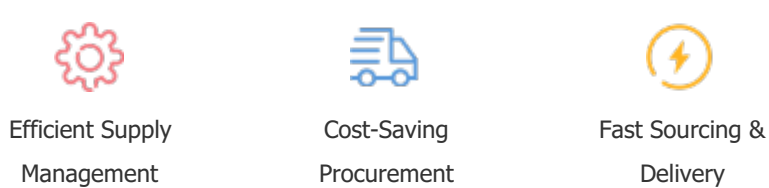
Note: The above table is for reference only. There may have some data bias for the uncontrollable factors.  
Contact us if you have any questions.

## Payment Support

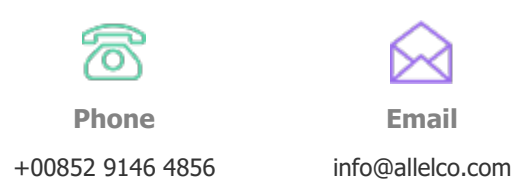
The payment method can be chosen from the methods shown below:  
Wire Transfer (T/T, Bank Transfer), Western Union, Credit card,  
PayPal.



## Your Faithful Supply Chain Partner -



Contact us if you have any questions.



## Certifications & Memberships



[View More](#)



WWW.ALLECOELEC.COM

### Contact us

Address: Flat/Rm C 13/F Harvard Commercial Building 105-111 Thomson Road, Wan Chai, Hong Kong

Phone: +00852 9146 4856

Fax: +00852 3010 8510

Email: info@Alleco.com

Copyright © 2012-2023 AllecoElec.com. All rights reserved.