

Image may be representation.
See specifications for product details.



MJD210T4G

Manufacturer Part Number	MJD210T4G
Manufacturer	onsemi
Allelco Part Number	32D-MJD210T4G
ECAD Model	PCB Symbol, Footprint & 3D Model
Parts Description	TRANS PNP 25V 5A DPAK
Package	TO-252-3, DPak (2 Leads + Tab), SC-63
Data sheet	MJD200, MJD210.pdf
RoHs Status	ROHS3 Compliant

Get a Quote

MJD210T4G - onsemi.New Original in Stock. Download Linear Technology MJD210T4G datasheet/specifications on AllelcoElec.com.
Request a quote for MJD210T4G, please send us email: info@allelco.com

Specifications

MJD210T4G Tech Specifications

MJD210T4G - onsemi technical specifications, attributes, parameters

Product Attribute	Attribute Value	Product Attribute	Attribute Value
Manufacturer	onsemi	Package	Tape & Reel (TR)
Voltage - Collector Emitter Breakdown (Max)	25 V	Operating Temperature	-65°C ~ 150°C (TJ)
Vce Saturation (Max) @ Ib, Ic	1.8V @ 1A, 5A	Mounting Type	Surface Mount
Transistor Type	PNP	Frequency - Transition	65MHz
Supplier Device Package	DPAK	DC Current Gain (hFE) (Min) @ Ic, Vce	45 @ 2A, 1V
Series	-	Current - Collector Cutoff (Max)	100nA (ICBO)
Power - Max	1.4 W	Current - Collector (Ic) (Max)	5 A
Package / Case	TO-252-3, DPak (2 Leads + Tab), SC-63	Base Product Number	MJD210

Parts with Similar Specifications

The three parts on the right have similar specifications to onsemi MJD210T4G

Product Attribute				
Part Number	MJD210T4G	MJD210RLG	MJD243T4	MJD253T4
Manufacturer	onsemi	onsemi	onsemi	onsemi
Package	Tape & Reel (TR)	Tape & Reel (TR)	Cut Tape (CT)	Cut Tape (CT)
Current - Collector (Ic) (Max)	5 A	5 A	4 A	4 A
Vce Saturation (Max) @ Ib, Ic	1.8V @ 1A, 5A	1.8V @ 1A, 5A	300mV @ 50mA, 500mA	300mV @ 50mA, 500mA
Current - Collector Cutoff (Max)	100nA (ICBO)	100nA (ICBO)	-	-
Power - Max	1.4 W	1.4 W	12.5 W	12.5 W
Supplier Device Package	DPAK	DPAK	DPAK	DPAK
Operating Temperature	-65°C ~ 150°C (TJ)	-65°C ~ 150°C (TJ)	-65°C ~ 150°C (TJ)	-65°C ~ 150°C (TJ)
Series	-	-	-	-
Voltage - Collector Emitter Breakdown (Max)	25 V	25 V	100 V	100 V
Frequency - Transition	65MHz	65MHz	40MHz	40MHz
Package / Case	TO-252-3, DPak (2 Leads + Tab), SC-63	TO-252-3, DPak (2 Leads + Tab), SC-63	TO-252-3, DPak (2 Leads + Tab), SC-63	TO-252-3, DPak (2 Leads + Tab), SC-63
Mounting Type	Surface Mount	Surface Mount	Surface Mount	Surface Mount
Base Product Number	MJD210	MJD210	MJD24	MJD25
Transistor Type	PNP	PNP	NPN	PNP
DC Current Gain (hFE) (Min) @ Ic, Vce	45 @ 2A, 1V	45 @ 2A, 1V	40 @ 200mA, 1V	40 @ 200mA, 1V

MJD210T4G Datasheet PDF

Download MJD210T4G pdf datasheets and onsemi documentation for MJD210T4G - onsemi.

Datasheets

[MJD200, MJD210.pdf](#)

Environmental Information

[onsemi REACH.pdf](#)

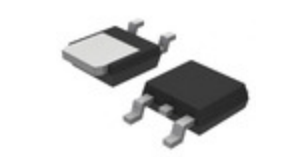
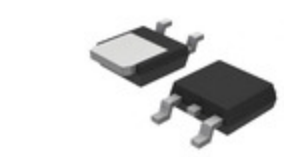
[onsemi RoHS.pdf](#)

PCN Assembly/Origin

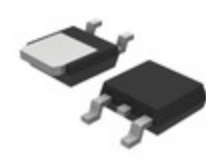
[Assembly /Test Change 11/Apr/2023.pdf](#)

Customers Also Interested in

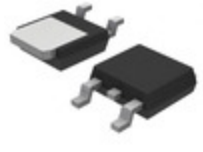
Recommended Products

**MJD210RLG**onsemi
TRANS PNP 25V 5A DPAK**MJD243T4**onsemi
TRANS PWR NPN 4A 100V DPAK**MJD210L-TN3-R**

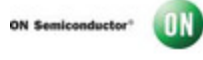
UTC

**MJD253T4**onsemi
TRANS PWR PNP 4A 100V DPAK**MJD210T4**onsemi
TRANS PWR PNP 5A 25V DPAK**MJD210TM**

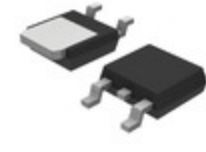
Fairchild (onsemi)

**MJD243T4G**onsemi
TRANS NPN 100V 4A DPAK**MJD210-TF**

Samsung Semiconductor

**MJD210 MOS**

AMI Semiconductor/onsemi

**MJD210RL**onsemi
TRANS PNP 25V 5A DPAK**MJD243G**onsemi
TRANS NPN 100V 4A DPAK**MJD210T4 MOS**

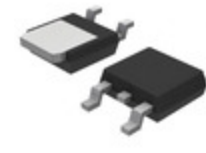
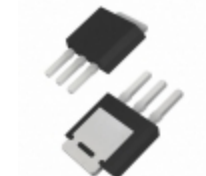
MOTOROLA

**MJD243-1G**

AMI Semiconductor/onsemi

**MJD210TF**Fairchild Semiconductor
TRANS PNP 25V 5A DPAK**MJD210RL MOS**

AMI Semiconductor/onsemi

**MJD210G**onsemi
TRANS PNP 25V 5A DPAK**MJD253-001**onsemi
TRANS PNP 100V 4A IPAK**MJD210TF**onsemi
TRANS PNP 25V 5A DPAK

Shipment

Delivery Time

In-stock items can be shipped within 24 hours. Some parts will be arranged for delivery within 1-2 days from the date all items arrive at our warehouse. And Allelco ships order once a day at about 17:00, except Sunday. Once the goods are shipped, the estimated delivery time depends on the shipping methods and Delivery destination. The table below shows are the logistic time for some common countries.

Delivery Cost

> Use your express account for shipment if you have one.

> Use our account for the shipment. Refer to the table below for the approximate charges.

(Different time frame / countries / package size has different price.)

Delivery Method

> Global Common Shipment by DHL / UPS / FedEx / TNT / EMS / SF we support.

> Others more shipping ways, please get in touch with your customer manager.

Common Countries Logistic Time Reference		
Region	Country	Logistic Time(Day)
America	United States	5
	Brazil	7
Europe	Germany	5
	United Kingdom	4
	Italy	5
Oceania	Australia	6
	New Zealand	7
Asia	India	6
	Japan	7
Middle East	Israel	6

DHL & FedEx Shipment Charges Reference	
Shipment charges(KG)	Reference DHL(USD\$)
0.00kg-1.00kg	USD\$60.00
1.00kg-2.00kg	USD\$70.00
2.00kg-3.00kg	USD\$80.00

Note: The above table is for reference only. There may have some data bias for the uncontrollable factors.

Contact us if you have any questions.

Payment Support

The payment method can be chosen from the methods shown below:
Wire Transfer (T/T, Bank Transfer), Western Union, Credit card,
PayPal.



Your Faithful Supply Chain Partner -



Efficient Supply
Management



Cost-Saving
Procurement



Fast Sourcing &
Delivery

Contact us if you have any questions.



Phone

+00852 9146 4856



Email

info@allelco.com

Certifications & Memberships



[View More](#)