

Image may be representation.
See specifications for product details.



EP4SGX530NF45C2N

Manufacturer Part Number **EP4SGX530NF45C2N**

Manufacturer **Intel**

Allelco Part Number **32D-EP4SGX530NF45C2N**

ECAD Model **PCB Symbol, Footprint & 3D Model**

Parts Description **IC FPGA 920 I/O 1932FBGA**

Package **1932-BBGA, FCBGA**

Data sheet **[Virtual JTAG Megafuntion Guide.pdf](#)**

[Stratix IV Devices.pdf](#)

[Stratix IV Device Handbook Vol1.pdf](#)

RoHs Status **RoHS Compliant**

Get a Quote

EP4SGX530NF45C2N - Intel.New Original in Stock. Download Linear Technology EP4SGX530NF45C2N datasheet/specifications on AllelcoElec.com.
Request a quote for EP4SGX530NF45C2N, please send us email: info@allelco.com

Specifications

EP4SGX530NF45C2N Tech Specifications

EP4SGX530NF45C2N - Intel technical specifications, attributes, parameters

Product Attribute	Attribute Value	Product Attribute	Attribute Value
Manufacturer	Intel	Operating Temperature	0°C ~ 85°C (TJ)
Voltage - Supply	0.87V ~ 0.93V	Number of Logic Elements/Cells	531200
Total RAM Bits	28033024	Number of LABs/CLBs	21248
Supplier Device Package	1932-FBGA, FC (45x45)	Number of I/O	920
Series	Stratix® IV GX	Mounting Type	Surface Mount
Package / Case	1932-BBGA, FCBGA	Base Product Number	EP4SGX530
Package	Tray		

Parts with Similar Specifications

The three parts on the right have similar specifications to Intel EP4SGX530NF45C2N

Product Attribute				
Part Number	EP4SGX530NF45C2N	EP4SGXDF29I3NAB	EP4SGX70HF35C3N	EP4SGX70DF29C2XN
Manufacturer	Intel	Intel	Intel	Intel
Mounting Type	Surface Mount	-	Surface Mount	Surface Mount
Operating Temperature	0°C ~ 85°C (TJ)	-	0°C ~ 85°C (TJ)	0°C ~ 85°C (TJ)
Voltage - Supply	0.87V ~ 0.93V	-	0.87V ~ 0.93V	0.87V ~ 0.93V
Total RAM Bits	28033024	-	7564880	7564880
Number of Logic Elements/Cells	531200	-	72600	72600
Package	Tray	Tray	Tray	Tray
Series	Stratix® IV GX	-	Stratix® IV GX	Stratix® IV GX
Supplier Device Package	1932-FBGA, FC (45x45)	-	1152-FBGA (35x35)	780-FBGA (29x29)
Package / Case	1932-BBGA, FCBGA	-	1152-BBGA, FCBGA	780-BBGA, FCBGA
Base Product Number	EP4SGX530	-	EP4SGX70	EP4SGX70
Number of LABs/CLBs	21248	-	2904	2904
Number of I/O	920	-	488	372

EP4SGX530NF45C2N Datasheet PDF

Download EP4SGX530NF45C2N pdf datasheets and Intel documentation for EP4SGX530NF45C2N - Intel.

Datasheets



[Virtual JTAG Megafuntion Guide.pdf](#)



[Stratix IV Devices.pdf](#)



[Stratix IV Device Handbook Vol1.pdf](#)

Errata



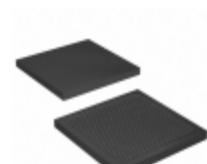
[Stratix IV GX Errata.pdf](#)

Customers Also Interested in

Recommended Products



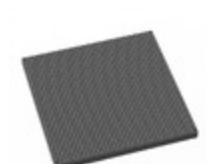
EP4SGXDF29I3NAB
Intel
IC FPGA STRATIX IV GX FLIP CHIP



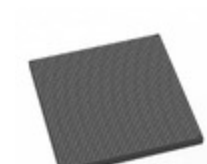
EP4SGX70HF35C3N
Intel
IC FPGA 488 I/O 1152FBGA



EP4SGX70DF29C2XN
Intel
IC FPGA 372 I/O 780FBGA



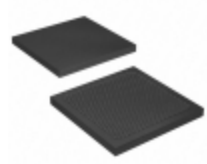
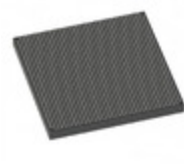
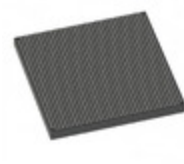
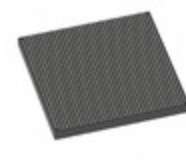
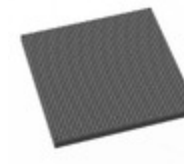
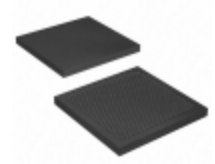
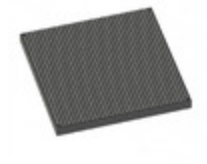
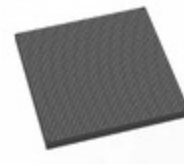
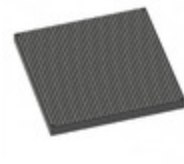
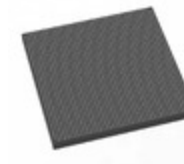
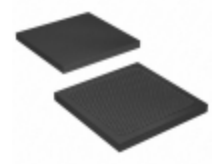
EP4SGX530KF43C2N
Intel
IC FPGA 880 I/O 1760FCBGA



EP4SGX530NF45C2
Intel
IC FPGA 920 I/O 1932FBGA



EP4SGX530KH40I3N
Intel
IC FPGA 744 I/O 1517HBGA

**EP4SGX70HF35C2G**Intel
IC FPGA 488 I/O 1152FBGA**EP4SGX530KH40C4N**Intel
IC FPGA 744 I/O 1517HBGA**EP4SGX530KH40I3**Intel
IC FPGA 744 I/O 1517HBGA**EP4SGX530KH40C2N**Intel
IC FPGA 744 I/O 1517HBGA**EP4SGX530KF43C4N**Intel
IC FPGA 880 I/O 1760FCBGA**EP4SGX70HF35I3N**Intel
IC FPGA 488 I/O 1152FBGA**EP4SGX530KH40C3N**Intel
IC FPGA 744 I/O 1517HBGA**EP4SGX530NF45I3N**Intel
IC FPGA 920 I/O 1932FBGA**EP4SGX530KH40I4N**Intel
IC FPGA 744 I/O 1517HBGA**EP4SGX530KH40C3**Intel
IC FPGA 744 I/O 1517HBGA**EP4SGX530NF45C4N**Intel
IC FPGA 920 I/O 1932FBGA**EP4SGX70HF35C4N**Intel
IC FPGA 488 I/O 1152FBGA

Shipment

Delivery Time

In-stock items can be shipped within 24 hours. Some parts will be arranged for delivery within 1-2 days from the date all items arrive at our warehouse. And Allelco ships order once a day at about 17:00, except Sunday. Once the goods are shipped, the estimated delivery time depends on the shipping methods and Delivery destination. The table below shows are the logistic time for some common countries.

Delivery Cost

> Use your express account for shipment if you have one.

> Use our account for the shipment. Refer to the table below for the approximate charges.

(Different time frame / countries / package size has different price.)

Delivery Method

> Global Common Shipment by DHL / UPS / FedEx / TNT / EMS / SF we support.

> Others more shipping ways, please get in touch with your customer manager.

Common Countries Logistic Time Reference		
Region	Country	Logistic Time(Day)
America	United States	5
	Brazil	7
Europe	Germany	5
	United Kingdom	4
	Italy	5
Oceania	Australia	6
	New Zealand	7
Asia	India	6
	Japan	7
Middle East	Israel	6

DHL & FedEx Shipment Charges Reference	
Shipment charges(KG)	Reference DHL(USD\$)
0.00kg-1.00kg	USD\$60.00
1.00kg-2.00kg	USD\$70.00
2.00kg-3.00kg	USD\$80.00

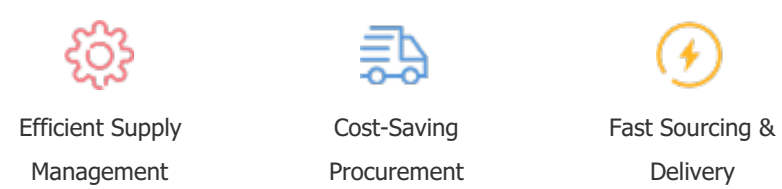
Note: The above table is for reference only. There may have some data bias for the uncontrollable factors.
Contact us if you have any questions.

Payment Support

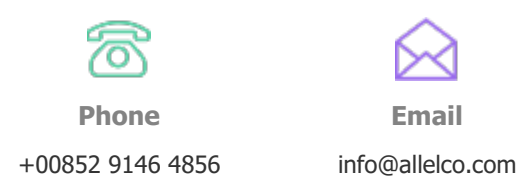
The payment method can be chosen from the methods shown below:
Wire Transfer (T/T, Bank Transfer), Western Union, Credit card, PayPal.



Your Faithful Supply Chain Partner -



Contact us if you have any questions.



Certifications & Memberships



[View More](#)