



Image may be representation.  
See specifications for product details.



## B340LB-E3/52T

Manufacturer Part Number	<b>B340LB-E3/52T</b>
Manufacturer	<b>Vishay General Semiconductor – Diodes Division</b>
Allelco Part Number	32D-B340LB-E3/52T
ECAD Model	PCB Symbol, Footprint & 3D Model
Parts Description	DIODE SCHOTTKY 40V 3A DO214AA
Package	DO-214AA, SMB
Data sheet	<b>B340LB.pdf</b>
RoHs Status	<b>ROHS3 Compliant</b>

**Get a Quote**

B340LB-E3/52T - Vishay General Semiconductor - Diodes Division. New Original in Stock. Download Linear Technology B340LB-E3/52T datasheet/specifications on AllelcoElec.com.  
Request a quote for B340LB-E3/52T, please send us email: [info@allelco.com](mailto:info@allelco.com)

## Specifications

B340LB-E3/52T Tech Specifications

B340LB-E3/52T - Vishay General Semiconductor - Diodes Division technical specifications, attributes, parameters

Product Attribute	Attribute Value	Product Attribute	Attribute Value
Manufacturer	Vishay General Semiconductor – Diodes Division	Package	Tape & Reel (TR)
Voltage - Forward (Vf) (Max) @ If	450 mV @ 3 A	Operating Temperature - Junction	-65°C ~ 150°C
Voltage - DC Reverse (Vr) (Max)	40 V	Mounting Type	Surface Mount
Technology	Schottky	Current - Reverse Leakage @ Vr	400 µA @ 40 V
Supplier Device Package	DO-214AA (SMB)	Current - Average Rectified (Io)	3A
Speed	Fast Recovery =< 500ns, > 200mA (Io)	Capacitance @ Vr, F	-
Series	-	Base Product Number	B340
Package / Case	DO-214AA, SMB		

## Parts with Similar Specifications

The three parts on the right have similar specifications to Vishay General Semiconductor - Diodes Division B340LB-E3/52T

Product Attribute				
Part Number	B340LB-E3/52T	<b>B340Q-13-F</b>	<b>B340LA-13-F</b>	<b>B340CE-13</b>
Manufacturer	Vishay General Semiconductor - Diodes Division	Diodes Incorporated	Diodes Incorporated	Diodes Incorporated
Mounting Type	Surface Mount	Surface Mount	Surface Mount	Surface Mount
Current - Reverse Leakage @ Vr	400 µA @ 40 V	500 µA @ 40 V	2 mA @ 40 V	200 µA @ 40 V
Base Product Number	B340	B340	B340	B340
Speed	Fast Recovery =< 500ns, > 200mA (Io)	Fast Recovery =< 500ns, > 200mA (Io)	Fast Recovery =< 500ns, > 200mA (Io)	Fast Recovery =< 500ns, > 200mA (Io)
Package / Case	DO-214AA, SMB	DO-214AB, SMC	DO-214AC, SMA	DO-214AB, SMC
Voltage - Forward (Vf) (Max) @ If	450 mV @ 3 A	500 mV @ 3 A	450 mV @ 3 A	500 mV @ 3 A
Voltage - DC Reverse (Vr) (Max)	40 V	40 V	40 V	40 V
Technology	Schottky	Schottky	Schottky	Schottky
Supplier Device Package	DO-214AA (SMB)	SMC	SMA	SMC
Capacitance @ Vr, F	-	200pF @ 4V, 1MHz	180pF @ 4V, 1MHz	140pF @ 4V, 1MHz
Package	Tape & Reel (TR)	Tape & Reel (TR)	Tape & Reel (TR)	Tape & Reel (TR)
Series	-	Automotive, AEC-Q101	-	-
Operating Temperature - Junction	-65°C ~ 150°C	-55°C ~ 150°C	-55°C ~ 125°C	-55°C ~ 150°C
Current - Average Rectified (Io)	3A	3A	3A	3A

## B340LB-E3/52T Datasheet PDF

Download B340LB-E3/52T pdf datasheets and Vishay General Semiconductor - Diodes Division documentation for B340LB-E3/52T - Vishay General Semiconductor - Diodes Division.

### Datasheets

**B340LB.pdf**

### PCN Assembly/Origin

**Multiple Parts 21/Jun/2022.pdf**

## Customers Also Interested in

### Recommended Products



**B340Q-13-F**

Diodes Incorporated  
DIODE SCHOTTKY 40V 3A SMC



**B340LA-13-01-F**

DIOCEDES



**B3431K3 1**

BAYLINEA



**B340LA-13-F**

Diodes Incorporated  
DIODE SCHOTTKY 40V 3A SMA



**B340CE-13**

Diodes Incorporated  
DIODE SCHOTTKY 40V 3A SMC



**B3431BK3-1.0**

BAYLINEAR



**B3431AK3**  
BAYINGEA



**B340C-13-F**  
Diodes Incorporated



**B340LA-13**  
Diodes Incorporated  
DIODE SCHOTTKY 40V 3A SMA



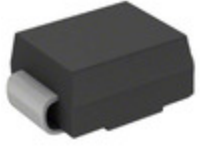
**B3431K3**  
BAYLINEAR



**B345AE-13**  
Diodes Incorporated  
DIODE SCHOTTKY 45V 2A SMA



**B345BE-13**  
Diodes Incorporated  
DIODE SCHOTTKY 45V 3A SMB



**B340LB-13-F**  
Diodes Incorporated  
DIODE SCHOTTKY 40V 3A SMB



**B3431BK3**  
BAYLINEAR



**B340BQ-13-F**  
Diodes Incorporated  
DIODE SCHOTTKY 40V 3A SMB



**B340LA-7-F**  
Diodes Incorporated



**B340LA-E3/61T**  
Electro-Films (EFI) / Vishay



**B345AF-13**  
Diodes Incorporated  
DIODE SCHOTTKY 45V 3A SMAF

## Shipment

### Delivery Time

In-stock items can be shipped within 24 hours. Some parts will be arranged for delivery within 1-2 days from the date all items arrive at our warehouse. And Allelco ships order once a day at about 17:00, except Sunday. Once the goods are shipped, the estimated delivery time depends on the shipping methods and Delivery destination. The table below shows are the logistic time for some common countries.

### Delivery Cost

- > Use your express account for shipment if you have one.
- > Use our account for the shipment. Refer to the table below for the approximate charges.  
(Different time frame / countries / package size has different price.)

### Delivery Method

- > Global Common Shipment by DHL / UPS / FedEx / TNT / EMS / SF we support.
- > Others more shipping ways, please get in touch with your customer manager.

Common Countries Logistic Time Reference		
Region	Country	Logistic Time(Day)
America	United States	5
	Brazil	7
Europe	Germany	5
	United Kingdom	4
	Italy	5
Oceania	Australia	6
	New Zealand	7
Asia	India	6
	Japan	7
Middle East	Israel	6

DHL & FedEx Shipment Charges Reference	
Shipment charges(KG)	Reference DHL(USD\$)
0.00kg-1.00kg	USD\$60.00
1.00kg-2.00kg	USD\$70.00
2.00kg-3.00kg	USD\$80.00

**Note:** The above table is for reference only. There may have some data bias for the uncontrollable factors.

Contact us if you have any questions.

## Payment Support

The payment method can be chosen from the methods shown below:  
Wire Transfer (T/T, Bank Transfer), Western Union, Credit card, PayPal.



## Your Faithful Supply Chain Partner -

- Efficient Supply Management
- Cost-Saving Procurement
- Fast Sourcing & Delivery

Contact us if you have any questions.

- Phone  
+00852 9146 4856
- Email  
info@allelco.com

## Certifications & Memberships



[View More](#)



## Contact us

Address: Flat/Rm C 13/F Harvard Commercial Building 105-111 Thomson Road, Wan Chai, Hong Kong  
Phone: +00852 9146 4856  
Fax: +00852 3010 8510  
Email: info@Allelco.com