



AD9713BBP



Image may be representation.
See specifications for product details.



Manufacturer Part Number	AD9713BBP
Manufacturer	Analog Devices, Inc.
Allelco Part Number	32D-AD9713BBP
ECAD Model	Request Free CAD Models
Parts Description	IC DAC 12BIT 100MSPS 28-PLCC
Package	28-LCC (J-Lead)
Data sheet	AD9713BBP.pdf

Get a Quote

AD9713BBP - Analog Devices Inc..New Original in Stock. Download Linear Technology AD9713BBP datasheet/specifications on AllelcoElec.com.
Request a quote for AD9713BBP, please send us email: info@allelco.com

Specifications

AD9713BBP Tech Specifications

AD9713BBP - Analog Devices Inc. technical specifications, attributes, parameters

Product Attribute	Attribute Value	Product Attribute	Attribute Value
Manufacturer	Analog Devices, Inc.	Package	Tube
Supplier Device Package	28-PLCC (11.51x11.51)	Mounting Type	Surface Mount
Series	-	Base Product Number	AD9713
Package / Case	28-LCC (J-Lead)		

Parts with Similar Specifications

The three parts on the right have similar specifications to Analog Devices Inc. AD9713BBP

Product Attribute				
Part Number	AD9713BBP	AD9721BN	AD9708ARZRL	AD9709ASTZRL
Manufacturer	Analog Devices Inc.	Analog Devices Inc.	Analog Devices Inc.	Analog Devices Inc.
Mounting Type	Surface Mount	Through Hole	Surface Mount	Surface Mount
Base Product Number	AD9713	-	AD9708	AD9709
Package / Case	28-LCC (J-Lead)	28-DIP (0.600", 15.24mm)	28-SOIC (0.295", 7.50mm Width)	48-LQFP
Series	-	AD9721	TxDAC®	TxDAC+®
Supplier Device Package	28-PLCC (11.51x11.51)	28-PDIP	28-SOIC	48-LQFP (7x7)
Package	Tube	Bulk	Tape & Reel (TR)	Tape & Reel (TR)

Customers Also Interested in

Recommended Products

AD9721BN Analog Devices Inc. IC DAC 10BIT A-OUT 28DIP	AD9713BANZ ADI (Analog Devices, Inc.)	AD9708ARZRL Analog Devices Inc. IC DAC 8BIT A-OUT 28SOIC	AD9709ASTZRL Analog Devices Inc. IC DAC 8BIT A-OUT 48LQFP	AD9714BCPZ Analog Devices Inc. IC DAC 8BIT A-OUT 40LFCSP	AD9713BAP ADI (Analog Devices, Inc.)
AD9709ASTRL Analog Devices Inc. IC DAC 8BIT DUAL 125MSPS 48-LQFP	AD9717BCPZRL7 Analog Devices Inc. IC DAC 14BIT A-OUT 40LFCSP	AD9713JP Analog Devices Inc. IC DAC 12BIT A-OUT 28PLCC	AD9717BCPZ Analog Devices Inc. IC DAC 14BIT A-OUT 40LFCSP	AD9713BAP-REEL ADI (Analog Devices, Inc.)	AD9720BN Analog Devices Inc. IC DAC 10BIT A-OUT 28DIP
AD9712BBN Analog Devices Inc. IC DAC 12BIT A-OUT 28DIP	AD9709ASTZ Analog Devices Inc. IC DAC 8BIT A-OUT 48LQFP	AD9716BCPZRL7 Analog Devices Inc. IC DAC 12BIT A-OUT 40LFCSP	AD9713BAN ADI (Analog Devices, Inc.)	AD9716BCPZ Analog Devices Inc. IC DAC 12BIT A-OUT 40LFCSP	AD9709AST Analog Devices Inc. IC DAC 8BIT DUAL 125MSPS 48-LQFP

Shipment

Delivery Time

In-stock items can be shipped within 24 hours. Some parts will be arranged for delivery within 1-2 days from the date all items arrive at our warehouse. And Allelco ships order once a day at about 17:00, except Sunday. Once the goods are shipped, the estimated delivery time depends on the shipping methods and Delivery destination. The table below shows are the logistic time for some common countries.

Delivery Cost

- > Use your express account for shipment if you have one.
 - > Use our account for the shipment. Refer to the table below for the approximate charges.
- (Different time frame / countries / package size has different price.)

Delivery Method

- > Global Common Shipment by DHL / UPS / FedEx / TNT / EMS / SF we support.
- > Others more shipping ways, please get in touch with your customer manager.

Common Countries Logistic Time Reference

DHL & FedEx Shipment Charges Reference

Region	Country	Logistic Time(Day)	Shipment charges(KG)	Reference DHL(USD\$)
America	United States	5	0.00kg-1.00kg	USD\$60.00
	Brazil	7	1.00kg-2.00kg	USD\$70.00
Europe	Germany	5	2.00kg-3.00kg	USD\$80.00
	United Kingdom	4		
	Italy	5		
Oceania	Australia	6		
	New Zealand	7		
Asia	India	6		
	Japan	7		
Middle East	Israel	6		

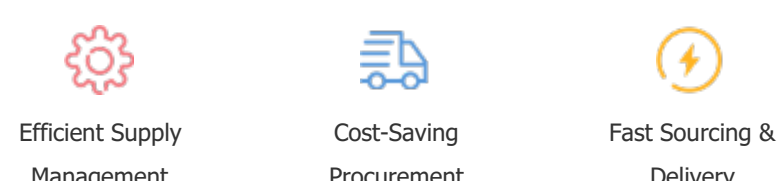
Note: The above table is for reference only. There may have some data bias for the uncontrollable factors.
Contact us if you have any questions.

Payment Support

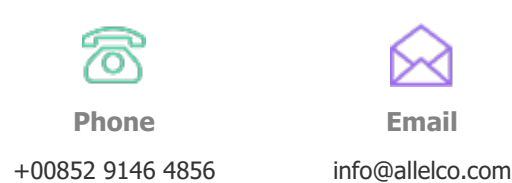
The payment method can be chosen from the methods shown below:
Wire Transfer (T/T, Bank Transfer), Western Union, Credit card, PayPal.



Your Faithful Supply Chain Partner -



Contact us if you have any questions.



Certifications & Memberships



[View More](#)



Contact us

Address: Flat/Rm C 13/F Harvard Commercial Building 105-111 Thomson Road, Wan Chai, Hong Kong
 Phone: +00852 9146 4856
 Fax: +00852 3010 8510
 Email: info@Allelco.com

Copyright © 2012-2023 AllelcoElec.com. All rights reserved.