

Image may be representation.
See specifications for product details.



MAX4524CUB+

Manufacturer Part Number	MAX4524CUB+
Manufacturer	Maxim Integrated
Allelco Part Number	32D-MAX4524CUB+
ECAD Model	Request Free CAD Models
Parts Description	IC SWITCH SP4T X 1 150OHM 10UMAX
Package	10-TFSOP, 10-MSOP (0.118', 3.00mm Width)
Data sheet	Cylindrical Battery Holders.pdf
RoHs Status	ROHS3 Compliant

Get a Quote

MAX4524CUB+ - Analog Devices Inc./Maxim Integrated.New Original in Stock. Download Linear Technology MAX4524CUB+ datasheet/specifications on AllelcoElec.com. Request a quote for MAX4524CUB+, please send us email: info@allelco.com

Specifications

MAX4524CUB+ Tech Specifications

MAX4524CUB+ - Analog Devices Inc./Maxim Integrated technical specifications, attributes, parameters

Product Attribute	Attribute Value	Product Attribute	Attribute Value
Manufacturer	Maxim Integrated	Number of Circuits	1
Voltage - Supply, Single (V+)	2V ~ 12V	Multiplexer/Demultiplexer Circuit	4:1
Voltage - Supply, Dual (V±)	-	Mounting Type	Surface Mount
Switch Time (Ton, Toff) (Max)	150ns, 120ns	Current - Leakage (IS(off)) (Max)	1nA
Switch Circuit	SP4T	Crosstalk	-
Supplier Device Package	10-uMAX/uSOP	Charge Injection	0.8pC
Series	-	Channel-to-Channel Matching (ΔRon)	20hm
Package / Case	10-TFSOP, 10-MSOP (0.118', 3.00mm Width)	Channel Capacitance (CS(off), CD(off))	4pF, 14pF
Package	Tube	Base Product Number	MAX4524
Operating Temperature	0°C ~ 70°C (TA)	-3db Bandwidth	-
On-State Resistance (Max)	150Ohm		

Parts with Similar Specifications

The three parts on the right have similar specifications to Analog Devices Inc./Maxim Integrated MAX4524CUB+

Product Attribute				
Part Number	MAX4524CUB+	MAX4524CUB+T	MAX4522EEE	MAX4524LEUB+T
Manufacturer	Analog Devices Inc./Maxim Integrated	Analog Devices Inc./Maxim Integrated	Analog Devices Inc./Maxim Integrated	Analog Devices Inc./Maxim Integrated
Package / Case	10-TFSOP, 10-MSOP (0.118', 3.00mm Width)	10-TFSOP, 10-MSOP (0.118', 3.00mm Width)	16-SSOP (0.154', 3.90mm Width)	10-TFSOP, 10-MSOP (0.118", 3.00mm Width)
Switch Circuit	SP4T	SP4T	SPST - NO	SP4T
Series	-	-	-	-
Operating Temperature	0°C ~ 70°C (TA)	0°C ~ 70°C (TA)	-40°C ~ 85°C (TA)	-40°C ~ 85°C (TA)
Crosstalk	-	-	-90dB @ 100kHz	-
Channel Capacitance (CS(off), CD(off))	4pF, 14pF	4pF, 14pF	2pF, 2pF	4pF, 14pF
Channel-to-Channel Matching (ΔRon)	20hm	20hm	10hm	20hm
Voltage - Supply, Single (V+)	2V ~ 12V	2V ~ 12V	2V ~ 12V	2V ~ 12V
Current - Leakage (IS(off)) (Max)	1nA	1nA	1nA	2nA
Package	Tube	Tape & Reel (TR)	Tube	Tape & Reel (TR)
Number of Circuits	1	1	4	1
Mounting Type	Surface Mount	Surface Mount	Surface Mount	Surface Mount
Voltage - Supply, Dual (V±)	-	-	±2V ~ 6V	-
On-State Resistance (Max)	150Ohm	150Ohm	1000hm	800hm
Switch Time (Ton, Toff) (Max)	150ns, 120ns	150ns, 120ns	80ns, 30ns	150ns, 120ns
Supplier Device Package	10-uMAX/uSOP	10-uMAX/uSOP	16-QSOP	10-uMAX/uSOP
-3db Bandwidth	-	-	-	200MHz
Charge Injection	0.8pC	0.8pC	1pC	0.8pC
Multiplexer/Demultiplexer Circuit	4:1	4:1	1:1	4:1
Base Product Number	MAX4524	MAX4524	MAX4522	MAX4524

MAX4524CUB+ Datasheet PDF

Download MAX4524CUB+ pdf datasheets and Analog Devices Inc./Maxim Integrated documentation for MAX4524CUB+ - Analog Devices Inc./Maxim Integrated.

Datasheets

[Cylindrical Battery Holders.pdf](#)

Environmental Information

[Maxim Integrated REACH.pdf](#)

[Maxim Integrated RoHS Cert.pdf](#)

Part Numbering Guide

 Part Numbering System.pdf

Customers Also Interested in

Recommended Products



MAX4524CUB+T

Analog Devices Inc./Maxim Integrated
IC SWITCH SP4T X 1 150OHM 10UMAX



MAX4522EEE

Analog Devices Inc./Maxim Integrated
IC SW SPST-NOX4 100OHM 16QSOP



MAX4524CUB-T

Analog Devices / Maxim Integrated



MAX4524LEUB+T

Analog Devices Inc./Maxim Integrated
IC SWITCH SP4T X 1 80OHM 10UMAX



MAX4523CSE

Analog Devices Inc./Maxim Integrated
IC SW SPST-NO/NCX4 100OHM 16SOIC



MAX4522EEE+

Analog Devices Inc./Maxim Integrated
IC SW SPST-NOX4 100OHM 16QSOP



MAX4522CUE+

Analog Devices Inc./Maxim Integrated
IC SW SPST-NOX4 100OHM 16TSSOP



MAX4523CPE

Analog Devices Inc./Maxim Integrated
IC SW SPST-NO/NCX4 100OHM 16DIP



MAX4524EUB

Analog Devices Inc./Maxim Integrated
IC SWITCH SP4T X 1 150OHM 10UMAX



MAX4523CSE+T

Analog Devices Inc./Maxim Integrated
IC SW SPST-NO/NCX4 100OHM 16SOIC



MAX4522EUE+

Analog Devices Inc./Maxim Integrated
IC SW SPST-NOX4 100OHM 16TSSOP



MAX4522ESE

Analog Devices Inc./Maxim Integrated
IC SW SPST-NOX4 100OHM 16SOIC



MAX4524CUB

Analog Devices Inc./Maxim Integrated
IC SWITCH SP4T X 1 150OHM 10UMAX



MAX4525CUB

Analog Devices Inc./Maxim Integrated
IC SWITCH DPDT X 1 150OHM 10UMAX



MAX4524EUB+

Analog Devices Inc./Maxim Integrated
IC SWITCH SP4T X 1 150OHM 10UMAX



MAX4524LEUB+

Analog Devices Inc./Maxim Integrated
IC SWITCH SP4T X 1 80OHM 10UMAX



MAX4522CUE

Analog Devices Inc./Maxim Integrated
IC SW SPST-NOX4 100OHM 16TSSOP



MAX4524EUB+T

Analog Devices Inc./Maxim Integrated
IC SWITCH SP4T X 1 150OHM 10UMAX

Shipment

Delivery Time

In-stock items can be shipped within 24 hours. Some parts will be arranged for delivery within 1-2 days from the date all items arrive at our warehouse. And Allelco ships order once a day at about 17:00, except Sunday. Once the goods are shipped, the estimated delivery time depends on the shipping methods and Delivery destination. The table below shows are the logistic time for some common countries.

Delivery Cost

- > Use your express account for shipment if you have one.
 - > Use our account for the shipment. Refer to the table below for the approximate charges.
- (Different time frame / countries / package size has different price.)

Delivery Method

- > Global Common Shipment by DHL / UPS / FedEx / TNT / EMS / SF we support.
- > Others more shipping ways, please get in touch with your customer manager.

Common Countries Logistic Time Reference

Region	Country	Logistic Time(Day)
America	United States	5
	Brazil	7
Europe	Germany	5
	United Kingdom	4
	Italy	5
Oceania	Australia	6
	New Zealand	7
Asia	India	6
	Japan	7
Middle East	Israel	6

DHL & FedEx Shipment Charges Reference

Shipment charges(KG)	Reference DHL(USD\$)
0.00kg-1.00kg	USD\$60.00
1.00kg-2.00kg	USD\$70.00
2.00kg-3.00kg	USD\$80.00

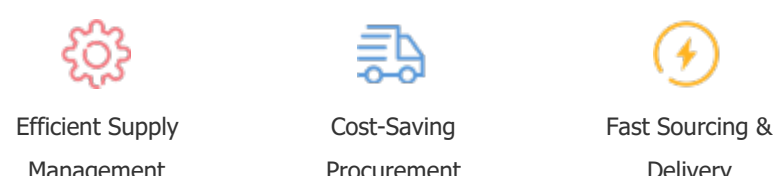
Note: The above table is for reference only. There may have some data bias for the uncontrollable factors.
Contact us if you have any questions.

Payment Support

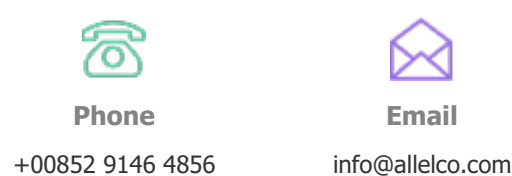
The payment method can be chosen from the methods shown below:
Wire Transfer (T/T, Bank Transfer), Western Union, Credit card, PayPal.



Your Faithful Supply Chain Partner -



Contact us if you have any questions.



Certifications & Memberships



View More