



# IXFN64N50P

Manufacturer Part Number	<b>IXFN64N50P</b>
Manufacturer	<b>IXYS Corporation</b>
Allelco Part Number	32D-IXFN64N50P
ECAD Model	Request Free CAD Models
Parts Description	MOSFET N-CH 500V 61A SOT227B
Package	SOT-227-4, miniBLOC
Data sheet	<b>IXFN64N50P.pdf</b>
RoHs Status	ROHS3 Compliant

Get a Quote

IXFN64N50P - IXYS.New Original in Stock. Download Linear Technology IXFN64N50P datasheet/specifications on AllelcoElec.com.  
Request a quote for IXFN64N50P, please send us email: [info@allelco.com](mailto:info@allelco.com)

## Specifications

IXFN64N50P Tech Specifications  
IXFN64N50P - IXYS technical specifications, attributes, parameters

Product Attribute	Attribute Value	Product Attribute	Attribute Value
Manufacturer	IXYS Corporation	Operating Temperature	-55°C ~ 150°C (TJ)
Vgs(th) (Max) @ Id	5.5V @ 8mA	Mounting Type	Chassis Mount
Vgs (Max)	±30V	Input Capacitance (Ciss) (Max) @ Vds	8700 pF @ 25 V
Technology	MOSFET (Metal Oxide)	Gate Charge (Qg) (Max) @ Vgs	150 nC @ 10 V
Supplier Device Package	SOT-227B	FET Type	N-Channel
Series	HiPerFET™, Polar	FET Feature	-
Rds On (Max) @ Id, Vgs	85mOhm @ 32A, 10V	Drive Voltage (Max Rds On, Min Rds On)	10V
Power Dissipation (Max)	700W (Tc)	Drain to Source Voltage (Vdss)	500 V
Package / Case	SOT-227-4, miniBLOC	Current - Continuous Drain (Id) @ 25°C	61A (Tc)
Package	Tube	Base Product Number	IXFN64

## Parts with Similar Specifications

The three parts on the right have similar specifications to IXYS IXFN64N50P

Product Attribute	NO PICTURE			
Part Number	IXFN64N50P	IXFN64N60P	IXFN70N60Q2	IXFN60N80P
Manufacturer	IXYS	IXYS	IXYS	IXYS
Vgs (Max)	±30V	±30V	±30V	±30V
Rds On (Max) @ Id, Vgs	85mOhm @ 32A, 10V	96mOhm @ 500mA, 10V	80mOhm @ 35A, 10V	140mOhm @ 30A, 10V
Current - Continuous Drain (Id) @ 25°C	61A (Tc)	50A (Tc)	70A (Tc)	53A (Tc)
Vgs(th) (Max) @ Id	5.5V @ 8mA	5V @ 8mA	5V @ 8mA	5V @ 8mA
Supplier Device Package	SOT-227B	SOT-227B	SOT-227B	SOT-227B
Technology	MOSFET (Metal Oxide)	MOSFET (Metal Oxide)	MOSFET (Metal Oxide)	MOSFET (Metal Oxide)
Base Product Number	IXFN64	IXFN64	IXFN70	IXFN60
Package	Tube	Tube	Tube	Tube
Operating Temperature	-55°C ~ 150°C (TJ)	-55°C ~ 150°C (TJ)	-55°C ~ 150°C (TJ)	-55°C ~ 150°C (TJ)
Mounting Type	Chassis Mount	Chassis Mount	Chassis Mount	Chassis Mount
Series	HiPerFET™, Polar	HiPerFET™, Polar	HiPerFET™, Q2 Class	HiPerFET™, Polar
Gate Charge (Qg) (Max) @ Vgs	150 nC @ 10 V	200 nC @ 10 V	265 nC @ 10 V	250 nC @ 10 V
Drain to Source Voltage (Vdss)	500 V	600 V	600 V	800 V
Input Capacitance (Ciss) (Max) @ Vds	8700 pF @ 25 V	12000 pF @ 25 V	7200 pF @ 25 V	18000 pF @ 25 V
FET Type	N-Channel	N-Channel	N-Channel	N-Channel
Power Dissipation (Max)	700W (Tc)	700W (Tc)	890W (Tc)	1040W (Tc)
FET Feature	-	-	-	-
Drive Voltage (Max Rds On, Min Rds On)	10V	10V	10V	10V
Package / Case	SOT-227-4, miniBLOC	SOT-227-4, miniBLOC	SOT-227-4, miniBLOC	SOT-227-4, miniBLOC

## IXFN64N50P Datasheet PDF

Download IXFN64N50P pdf datasheets and IXYS documentation for IXFN64N50P - IXYS.

### Datasheets

[IXFN64N50P.pdf](#)

## Customers Also Interested in

### Recommended Products



**IXFN64N60P**

IXYS  
MOSFET N-CH 600V 50A SOT-227B

**IXFN70N60Q2**

IXYS  
MOSFET N-CH 600V 70A SOT-227B

**IXFN55N80Q2**

IXYS / Littelfuse  
IGBT Module

**IXFN60N80P**

IXYS  
MOSFET N-CH 800V 53A SOT-227B

**IXFN70N600L**

IXYS / Littelfuse  
IGBT Module

**IXFN60N120D1**

IXYS / Littelfuse  
IGBT Module



**IXFN60N60**

IXYS  
MOSFET N-CH 600V 60A SOT-227B

**IXFN60N50L2**

IXYS / Littelfuse  
IGBT Module

**IXFN66N85X**

IXYS  
MOSFET N-CH 850V 65A SOT227B

**IXFN55N50F**

IXYS  
MOSFET N-CH 500V 55A SOT227B

**IXFN55N50**

IXYS  
MOSFET N-CH 500V 55A SOT-227B

**IXFN62N80Q3**

IXYS  
MOSFET N-CH 800V 49A SOT227B



**IXFN70N6002**

IXYS / Littelfuse  
IGBT Module

**IXFN70N120SK**

IXYS  
SICFET N-CH 1200V 68A SOT227B

**IXFN72N55Q2**

IXYS  
MOSFET N-CH 550V 72A SOT-227B

**IXFN65N90P**

IXYS / Littelfuse

**IXFN70N60**

IXYS / Littelfuse  
IGBT Module

**IXFN66N50Q2**

IXYS  
MOSFET N-CH 500V 66A SOT-227B

## Shipment

### Delivery Time

In-stock items can be shipped within 24 hours. Some parts will be arranged for delivery within 1-2 days from the date all items arrive at our warehouse. And Allelco ships order once a day at about 17:00, except Sunday. Once the goods are shipped, the estimated delivery time depends on the shipping methods and Delivery destination. The table below shows are the logistic time for some common countries.

### Delivery Cost

> Use your express account for shipment if you have one.

> Use our account for the shipment. Refer to the table below for the approximate charges.

(Different time frame / countries / package size has different price.)

### Delivery Method

> Global Common Shipment by DHL / UPS / FedEx / TNT / EMS / SF we support.

> Others more shipping ways, please get in touch with your customer manager.

Common Countries Logistic Time Reference

Region	Country	Logistic Time(Day)
America	United States	5
	Brazil	7
Europe	Germany	5
	United Kingdom	4
	Italy	5
Oceania	Australia	6
	New Zealand	7
Asia	India	6
	Japan	7
Middle East	Israel	6

DHL & FedEx Shipment Charges Reference

Shipment charges(KG)	Reference DHL(USD\$)
0.00kg-1.00kg	USD\$60.00
1.00kg-2.00kg	USD\$70.00
2.00kg-3.00kg	USD\$80.00

Note: The above table is for reference only. There may have some data bias for the uncontrollable factors.

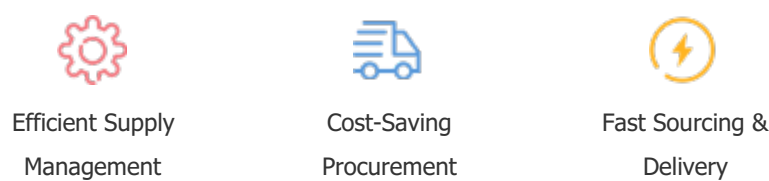
Contact us if you have any questions.

## Payment Support

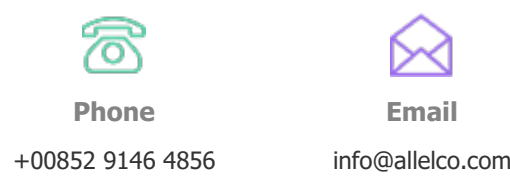
The payment method can be chosen from the methods shown below:  
Wire Transfer (T/T, Bank Transfer), Western Union, Credit card,  
PayPal.



## Your Faithful Supply Chain Partner -



Contact us if you have any questions.



## Certifications & Memberships



[View More](#)



### Contact us

Address: Flat/Rm C 13/F Harvard Commercial Building 105-111 Thomson Road, Wan Chai, Hong Kong

Phone: +00852 9146 4856

Fax: +00852 3010 8510

Email: info@Allelco.com

Copyright © 2012-2023 AllelcoElec.com. All rights reserved.