

Image may be representation.
See specifications for product details.



L5973D013TR

Manufacturer Part Number	L5973D013TR
Manufacturer	STMicroelectronics
Allelco Part Number	32D-L5973D013TR
ECAD Model	PCB Symbol, Footprint & 3D Mode
Parts Description	IC REG BUCK ADJ 2.5A 8HSOP
Package	8-SOIC (0.154", 3.90mm Width) Exposed Pad
Data sheet	L5973D.pdf
RoHs Status	ROHS3 Compliant

[Get a Quote](#)

L5973D013TR - STMicroelectronics.New Original in Stock. Download Linear Technology L5973D013TR datasheet/specifications on AllelcoElec.com.
Request a quote for L5973D013TR, please send us email: info@allelco.com

Specifications

L5973D013TR Tech Specifications

L5973D013TR - STMicroelectronics technical specifications, attributes, parameters

Product Attribute	Attribute Value	Product Attribute	Attribute Value
Manufacturer	STMicroelectronics	Package	Tape & Reel (TR)
Voltage - Output (Min/Fixed)	1.235V	Output Type	Adjustable
Voltage - Output (Max)	35V	Output Configuration	Positive
Voltage - Input (Min)	4V	Operating Temperature	-40°C ~ 150°C (TJ)
Voltage - Input (Max)	36V	Number of Outputs	1
Topology	Buck	Mounting Type	Surface Mount
Synchronous Rectifier	No	Function	Step-Down
Supplier Device Package	8-HSOP	Frequency - Switching	250kHz
Series	-	Current - Output	2.5A
Package / Case	8-SOIC (0.154", 3.90mm Width) Exposed Pad	Base Product Number	L5973

Parts with Similar Specifications

The three parts on the right have similar specifications to STMicroelectronics L5973D013TR

Product Attribute				
Part Number	L5973D013TR	L5980TR	L5972D013TR	L5987TR
Manufacturer	STMicroelectronics	STMicroelectronics	STMicroelectronics	STMicroelectronics
Base Product Number	L5973	L5980	L5972	L5987
Output Configuration	Positive	Positive	Positive	Positive
Voltage - Input (Min)	4V	2.9V	4.4V	2.9V
Frequency - Switching	250kHz	250kHz ~ 1MHz	250kHz	250kHz ~ 1MHz
Topology	Buck	Buck	Buck	Buck
Number of Outputs	1	1	1	1
Output Type	Adjustable	Adjustable	Adjustable	Adjustable
Function	Step-Down	Step-Down	Step-Down	Step-Down
Voltage - Output (Min/Fixed)	1.235V	0.6V	1.235V	0.6V
Voltage - Input (Max)	36V	18V	36V	18V
Voltage - Output (Max)	35V	18V	35V	18V
Synchronous Rectifier	No	No	No	No
Mounting Type	Surface Mount	Surface Mount	Surface Mount	Surface Mount
Package / Case	8-SOIC (0.154", 3.90mm Width) Exposed Pad	8-VDFN Exposed Pad	8-SOIC (0.154", 3.90mm Width)	8-VDFN Exposed Pad
Current - Output	2.5A	700mA	2A	3A
Supplier Device Package	8-HSOP	8-VFQFPN (3x3)	8-SOIC	8-VFQFPN (3x3)
Package	Tape & Reel (TR)	Tape & Reel (TR)	Tape & Reel (TR)	Tape & Reel (TR)
Series	-	-	-	-
Operating Temperature	-40°C ~ 150°C (TJ)	-40°C ~ 150°C (TJ)	-40°C ~ 150°C (TJ)	-40°C ~ 150°C (TJ)

L5973D013TR Datasheet PDF

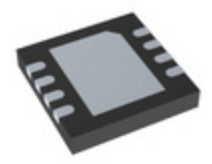
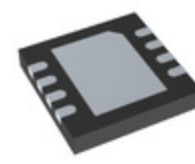
Download L5973D013TR pdf datasheets and STMicroelectronics documentation for L5973D013TR - STMicroelectronics.

HTML Datasheet

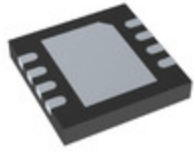
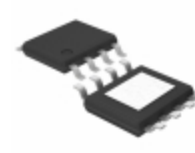
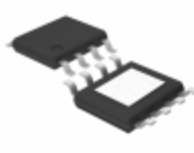


Customers Also Interested in

Recommended Products

**L5980TR**STMicroelectronics
IC REG BUCK ADJ 700MA 8V FQFPN**L5972D013TR**STMicroelectronics
IC REG BUCK ADJUSTABLE 2A 8SO**L5970LD**

STMicroelectronics

L5987TRSTMicroelectronics
IC REG BUCK ADJ 3A 8V FQFPN**L5970D**STMicroelectronics
IC REG BUCK ADJUSTABLE 1A 8SO**L5983TR**STMicroelectronics
IC REG BUCK ADJ 1.5A 8V FQFPN**L5986TR**STMicroelectronics
IC REG BUCK ADJ 2.5A 8V FQFPN**L5985TR**STMicroelectronics
IC REG BUCK ADJ 2A 8V FQFPN**L5975D**STMicroelectronics
IC REG BUCK ADJUSTABLE 3A 8SO**L5986A**STMicroelectronics
IC REG BUCK ADJ 2.5A 8HSOP**L5973AD**STMicroelectronics
IC REG BUCK ADJUSTABLE 2A 8HSOP**L5972D**STMicroelectronics
IC REG BUCK ADJUSTABLE 2A 8SO**L5988D**STMicroelectronics
IC REG BUCK ADJ 4A 16HTSSOP**L5987A**STMicroelectronics
IC REG BUCK ADJUSTABLE 3A 8HSOP**L5973D**STMicroelectronics
IC REG BUCK ADJ 2.5A 8HSOP**L5970HD**

STMicroelectronics

**L5973ADTR**STMicroelectronics
IC REG BUCK ADJUSTABLE 2A 8HSOP**L5970D013TR**STMicroelectronics
IC REG BUCK ADJUSTABLE 1A 8SO

Shipment

Delivery Time

In-stock items can be shipped within 24 hours. Some parts will be arranged for delivery within 1-2 days from the date all items arrive at our warehouse. And Allelco ships order once a day at about 17:00, except Sunday. Once the goods are shipped, the estimated delivery time depends on the shipping methods and Delivery destination. The table below shows are the logistic time for some common countries.

Delivery Cost

> Use your express account for shipment if you have one.

> Use our account for the shipment. Refer to the table below for the approximate charges.

(Different time frame / countries / package size has different price.)

Delivery Method

> Global Common Shipment by DHL / UPS / FedEx / TNT / EMS / SF we support.

> Others more shipping ways, please get in touch with your customer manager.

Common Countries Logistic Time Reference		
Region	Country	Logistic Time(Day)
America	United States	5
	Brazil	7
Europe	Germany	5
	United Kingdom	4
	Italy	5
Oceania	Australia	6
	New Zealand	7
Asia	India	6
	Japan	7
Middle East	Israel	6

DHL & FedEx Shipment Charges Reference	
Shipment charges(KG)	Reference DHL(USD\$)
0.00kg-1.00kg	USD\$60.00
1.00kg-2.00kg	USD\$70.00
2.00kg-3.00kg	USD\$80.00

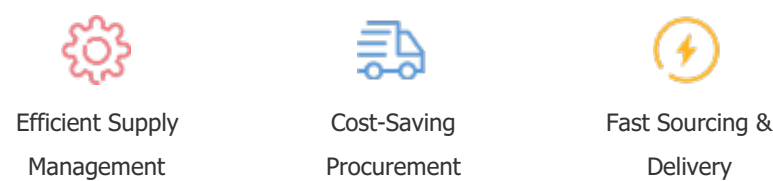
Note: The above table is for reference only. There may have some data bias for the uncontrollable factors.
Contact us if you have any questions.

Payment Support

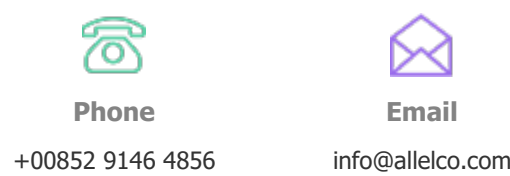
The payment method can be chosen from the methods shown below:
Wire Transfer (T/T, Bank Transfer), Western Union, Credit card, PayPal.



Your Faithful Supply Chain Partner -



Contact us if you have any questions.



Certifications & Memberships



[View More](#)



WWW.ALLELCOELEC.COM

Contact us

Address: Flat/Rm C 13/F Harvard Commercial Building 105-111 Thomson Road, Wan Chai, Hong Kong

Phone: +00852 9146 4856

Fax: +00852 3010 8510

Email: info@Allelco.com

Copyright © 2012-2023 AllelcoElec.com. All rights reserved.