

Image may be representation.
See specifications for product details.



AD7243BQ

Manufacturer Part Number	AD7243BQ
Manufacturer	Analog Devices, Inc.
Allelco Part Number	32D-AD7243BQ
ECAD Model	Request Free CAD Models
Parts Description	IC DAC 12BIT V-OUT 16CDIP
Package	16-CDIP (0.300", 7.62mm)
Data sheet	AD7243.pdf
	AD7243.pdf
RoHs Status	ROHS3 Compliant

Get a Quote

AD7243BQ - Analog Devices Inc..New Original in Stock. Download Linear Technology AD7243BQ datasheet/specifications on AllelcoElec.com.
Request a quote for AD7243BQ, please send us email: info@allelco.com

Specifications

AD7243BQ Tech Specifications
AD7243BQ - Analog Devices Inc. technical specifications, attributes, parameters

Product Attribute	Attribute Value	Product Attribute	Attribute Value
Manufacturer	Analog Devices, Inc.	Operating Temperature	-40°C ~ 85°C
Voltage - Supply, Digital	-	Number of D/A Converters	1
Voltage - Supply, Analog	±10.8V ~ 16.5V	Number of Bits	12
Supplier Device Package	16-CERDIP	Mounting Type	Through Hole
Settling Time	10µs	INL/DNL (LSB)	±0.5 (Max), ±0.9 (Max)
Series	DACPORT®	Differential Output	No
Reference Type	External, Internal	Data Interface	SPI
Package / Case	16-CDIP (0.300", 7.62mm)	Base Product Number	AD7243
Package	Tube	Architecture	R-2R
Output Type	Voltage - Buffered		

Parts with Similar Specifications

The three parts on the right have similar specifications to Analog Devices Inc. AD7243BQ

Product Attribute				
Part Number	AD7243BQ	AD7243BRZ	AD7243ARZ	AD7243ANZ
Manufacturer	Analog Devices Inc.	Analog Devices Inc.	Analog Devices Inc.	Analog Devices Inc.
Base Product Number	AD7243	AD7243	AD7243	AD7243
Reference Type	External, Internal	External, Internal	External, Internal	External, Internal
INL/DNL (LSB)	±0.5 (Max), ±0.9 (Max)	±0.5 (Max), ±0.9 (Max)	±1 (Max), ±0.9 (Max)	±1 (Max), ±0.9 (Max)
Number of Bits	12	12	12	12
Mounting Type	Through Hole	Surface Mount	Surface Mount	Through Hole
Voltage - Supply, Digital	-	-	-	-
Number of D/A Converters	1	1	1	1
Architecture	R-2R	R-2R	R-2R	R-2R
Output Type	Voltage - Buffered	Voltage - Buffered	Voltage - Buffered	Voltage - Buffered
Settling Time	10µs	10µs	10µs	10µs
Package	Tube	Tube	Tube	Tube
Series	DACPORT®	DACPORT®	DACPORT®	DACPORT®
Voltage - Supply, Analog	±10.8V ~ 16.5V	±10.8V ~ 16.5V	±10.8V ~ 16.5V	±10.8V ~ 16.5V
Data Interface	SPI	SPI	SPI	SPI
Supplier Device Package	16-CERDIP	16-SOIC	16-SOIC	16-PDIP
Differential Output	No	No	No	No
Package / Case	16-CDIP (0.300", 7.62mm)	16-SOIC (0.295", 7.50mm Width)	16-SOIC (0.295", 7.50mm Width)	16-DIP (0.300", 7.62mm)
Operating Temperature	-40°C ~ 85°C	-40°C ~ 85°C	-40°C ~ 85°C	-40°C ~ 85°C

AD7243BQ Datasheet PDF

Download AD7243BQ pdf datasheets and Analog Devices Inc. documentation for AD7243BQ - Analog Devices Inc..

Datasheets

[AD7243.pdf](#)

HTML Datasheet

[AD7243.pdf](#)

Customers Also Interested in

Recommended Products



AD7243AR+
ADI (Analog Devices, Inc.)



AD7243BRZ
Analog Devices Inc.
IC DAC 12BIT V-OUT 16SOIC

AD7244JR+
ADI (Analog Devices, Inc.)



AD7243ARZ
Analog Devices Inc.
IC DAC 12BIT V-OUT 16SOIC

AD7243ANZ
Analog Devices Inc.
IC DAC 12BIT V-OUT 16DIP



AD7244JR
Analog Devices Inc.
IC DAC 14BIT V-OUT 28SOIC



AD7243ARZ-REEL
Analog Devices Inc.
IC DAC 12BIT V-OUT 16SOIC



AD7243BR
Analog Devices Inc.
IC DAC 12BIT V-OUT 16SOIC



AD7243AR-REEL
Analog Devices Inc.
IC DAC 12BIT V-OUT 16SOIC



AD7243AR
Analog Devices Inc.
IC DAC 12BIT V-OUT 16SOIC



AD7245AANZ
Analog Devices Inc.
IC DAC 12BIT V-OUT 24DIP



AD7243BN
Analog Devices Inc.
IC DAC 12BIT V-OUT 16DIP



AD7244AQ
Analog Devices Inc.
IC DAC 14BIT V-OUT 24CDIP



AD7245AAN
Analog Devices Inc.
IC DAC 12BIT V-OUT 24DIP



AD7244JRZ
Analog Devices Inc.
IC DAC 14BIT V-OUT 28SOIC



AD7243AQ
Analog Devices Inc.
IC DAC 12BIT V-OUT 16CERDIP



AD7243BNZ
Analog Devices Inc.
IC DAC 12BIT V-OUT 16DIP



AD7244JN
Analog Devices Inc.
IC DAC 14BIT V-OUT 24DIP

Shipment

Delivery Time

In-stock items can be shipped within 24 hours. Some parts will be arranged for delivery within 1-2 days from the date all items arrive at our warehouse. And Allelco ships order once a day at about 17:00, except Sunday. Once the goods are shipped, the estimated delivery time depends on the shipping methods and Delivery destination. The table below shows are the logistic time for some common countries.

Delivery Cost

- > Use your express account for shipment if you have one.
 - > Use our account for the shipment. Refer to the table below for the approximate charges.
- (Different time frame / countries / package size has different price.)

Delivery Method

- > Global Common Shipment by DHL / UPS / FedEx / TNT / EMS / SF we support.
- > Others more shipping ways, please get in touch with your customer manager.

Common Countries Logistic Time Reference		
Region	Country	Logistic Time(Day)
America	United States	5
	Brazil	7
Europe	Germany	5
	United Kingdom	4
	Italy	5
Oceania	Australia	6
	New Zealand	7
Asia	India	6
	Japan	7
Middle East	Israel	6

DHL & FedEx Shipment Charges Reference	
Shipment charges(KG)	Reference DHL(USD\$)
0.00kg-1.00kg	USD\$60.00
1.00kg-2.00kg	USD\$70.00
2.00kg-3.00kg	USD\$80.00

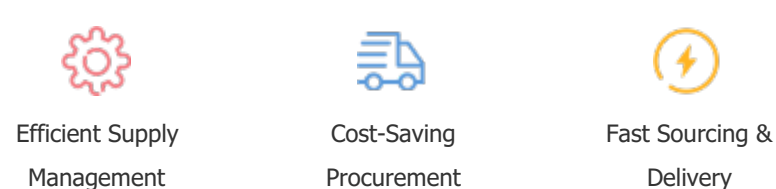
Note: The above table is for reference only. There may have some data bias for the uncontrollable factors.
Contact us if you have any questions.

Payment Support

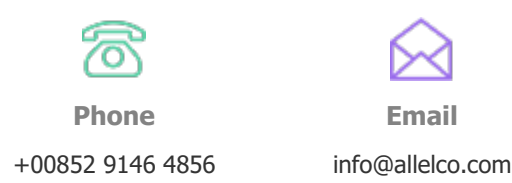
The payment method can be chosen from the methods shown below:
Wire Transfer (T/T, Bank Transfer), Western Union, Credit card, PayPal.



Your Faithful Supply Chain Partner -



Contact us if you have any questions.



Certifications & Memberships



[View More](#)