

Image may be representation.
See specifications for product details.



EPCQ16ASI8N

Manufacturer Part Number	EPCQ16ASI8N
Manufacturer	Intel
Allelco Part Number	32D-EPCQ16ASI8N
ECAD Model	PCB Symbol, Footprint & 3D Mode
Parts Description	IC CONFIG DEVICE 16MBIT 8SOIC
Package	8-SOIC (0.154", 3.90mm Width)
Data sheet	EPCQ-A Serial Configuration Device.pdf EPCQA Datasheet.pdf 8-SOIC Pkg Spec.pdf
RoHs Status	RoHS Compliant

Get a Quote

EPCQ16ASI8N - Intel.New Original in Stock. Download Linear Technology EPCQ16ASI8N datasheet/specifications on AllelcoElec.com.
Request a quote for EPCQ16ASI8N, please send us email: info@allelco.com

Specifications

EPCQ16ASI8N Tech Specifications
EPCQ16ASI8N - Intel technical specifications, attributes, parameters

Product Attribute	Attribute Value	Product Attribute	Attribute Value
Manufacturer	Intel	Package	Tube
Voltage - Supply	2.7V ~ 3.6V	Operating Temperature	-40°C ~ 85°C
Supplier Device Package	8-SOIC	Mounting Type	Surface Mount
Series	EPCQ-A	Memory Size	16Mb
Programmable Type	In System Programmable	Base Product Number	EPCQ16
Package / Case	8-SOIC (0.154", 3.90mm Width)		

Parts with Similar Specifications

The three parts on the right have similar specifications to Intel EPCQ16ASI8N

Product Attribute				
Part Number	EPCQ16ASI8N	EPCQ256SI16N	EPCQ4ASI8N	EPCQ128SI16N
Manufacturer	Intel	Intel	Intel	Intel
Voltage - Supply	2.7V ~ 3.6V	2.7V ~ 3.6V	2.7V ~ 3.6V	2.7V ~ 3.6V
Package / Case	8-SOIC (0.154", 3.90mm Width)	16-SOIC (0.295", 7.50mm Width)	8-SOIC (0.154", 3.90mm Width)	16-SOIC (0.295", 7.50mm Width)
Operating Temperature	-40°C ~ 85°C	-40°C ~ 85°C	-40°C ~ 85°C	-40°C ~ 85°C
Programmable Type	In System Programmable	In System Programmable	In System Programmable	In System Programmable
Memory Size	16Mb	256Mb	4MB	128Mb
Series	EPCQ-A	EPCQ	EPCQ-A	EPCQ
Base Product Number	EPCQ16	EPCQ256	EPCQ4AS18	EPCQ128
Supplier Device Package	8-SOIC	16-SOIC	8-SOIC	16-SOIC
Mounting Type	Surface Mount	Surface Mount	Surface Mount	Surface Mount
Package	Tube	Tube	Tube	Tube

EPCQ16ASI8N Datasheet PDF

Download EPCQ16ASI8N pdf datasheets and Intel documentation for EPCQ16ASI8N - Intel.

Datasheets

[EPCQ-A Serial Configuration Device.pdf](#)

PCN Packaging

[Mult Dev Label CHG 24/Jan/2020.pdf](#)

[Mult Dev Label Chgs 24/Feb/2020.pdf](#)

HTML Datasheet

[EPCQA Datasheet.pdf](#)

[8-SOIC Pkg Spec.pdf](#)

Customers Also Interested in

Recommended Products



EPCQ128A

Altera (Intel)

EPCQ256SI16N

Intel
IC CONFIG DEVICE 256MBIT 16SOIC

EPCQ4ASI8N

Intel
IC CONFIG DEVICE 4MBIT 8SOIC

EPCQ128SI16N

Intel
IC CONFIG DEVICE 128MBIT 16SOIC

EPCQ16N

Altera (Intel)

EPCQ64SI16N

Intel
IC CONFIG DEVICE 64MBIT 16SOIC



EPCQ512ASI16N

Intel
IC QUAD-SERIAL CONFIG DEVICE
512



EPCQ16SI8N

Intel
IC CONFIG DEVICE 16MBIT 8SOIC



EPCQ32SI8N

Intel
IC CONFIG DEVICE 32MBIT 8SOIC



EPCOS4203

EPCOS (TDK)



EPCQ128N

Altera (Intel)



EPCQ64N

Altera (Intel)



EPCQ64ASI16N

Intel
IC CONFIG DEVICE 64MBIT 16SOIC



EPCOS BB103

EPCOS (TDK)



EPCQ128ASI16N

Intel
IC CONFIG DEVICE 128MBIT 16SOIC



EPCQ256N

Altera (Intel)



NO PICTURE

EPCIO6988-02G

ITRI



EPCOS7681

EPCOS (TDK)

Shipment

Delivery Time

In-stock items can be shipped within 24 hours. Some parts will be arranged for delivery within 1-2 days from the date all items arrive at our warehouse. And Allelco ships order once a day at about 17:00, except Sunday. Once the goods are shipped, the estimated delivery time depends on the shipping methods and Delivery destination. The table below shows are the logistic time for some common countries.

Delivery Cost

> Use your express account for shipment if you have one.

> Use our account for the shipment. Refer to the table below for the approximate charges.

(Different time frame / countries / package size has different price.)

Delivery Method

> Global Common Shipment by DHL / UPS / FedEx / TNT / EMS / SF we support.

> Others more shipping ways, please get in touch with your customer manager.

Common Countries Logistic Time Reference

Region	Country	Logistic Time(Day)
America	United States	5
	Brazil	7
Europe	Germany	5
	United Kingdom	4
	Italy	5
Oceania	Australia	6
	New Zealand	7
Asia	India	6
	Japan	7
Middle East	Israel	6

DHL & FedEx Shipment Charges Reference

Shipment charges(KG)	Reference DHL(USD\$)
0.00kg-1.00kg	USD\$60.00
1.00kg-2.00kg	USD\$70.00
2.00kg-3.00kg	USD\$80.00

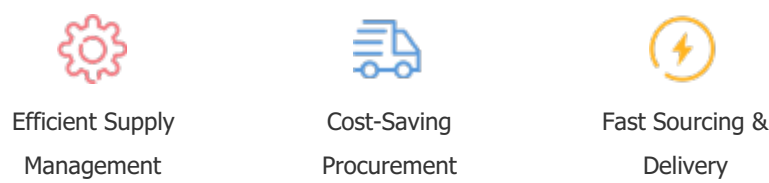
Note: The above table is for reference only. There may have some data bias for the uncontrollable factors.
Contact us if you have any questions.

Payment Support

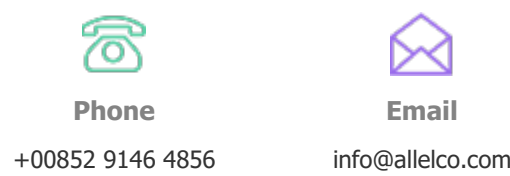
The payment method can be chosen from the methods shown below:
Wire Transfer (T/T, Bank Transfer), Western Union, Credit card,
PayPal.



Your Faithful Supply Chain Partner -



Contact us if you have any questions.



Certifications & Memberships



View More



Contact us

Address: Flat/Rm C 13/F Harvard Commercial Building 105-111 Thomson Road, Wan Chai, Hong Kong

Phone: +00852 9146 4856

Fax: +00852 3010 8510

Email: info@Allelco.com

Copyright © 2012-2023 AllelcoElec.com. All rights reserved.