



Image may be representation.  
See specifications for product details.



## MAX9248ECM+

Manufacturer Part Number	<b>MAX9248ECM+</b>
Manufacturer	<b>Maxim Integrated</b>
Allelco Part Number	32D-MAX9248ECM+
ECAD Model	Request Free CAD Models
Parts Description	IC DESERIALIZER LVDS 48LQFP
Package	48-LQFP
Data sheet	<b>MAX9248,50.pdf</b>
RoHs Status	<b>ROHS3 Compliant</b>

**Get a Quote**

MAX9248ECM+ - Analog Devices Inc./Maxim Integrated. New Original in Stock. Download Linear Technology MAX9248ECM+ datasheet/specifications on AllelcoElec.com. Request a quote for MAX9248ECM+, please send us email: [info@allelco.com](mailto:info@allelco.com)

### Specifications

MAX9248ECM+ Tech Specifications  
MAX9248ECM+ - Analog Devices Inc./Maxim Integrated technical specifications, attributes, parameters

Product Attribute	Attribute Value	Product Attribute	Attribute Value
Manufacturer	Maxim Integrated	Number of Outputs	27
Voltage - Supply	3V ~ 3.6V	Number of Inputs	1
Supplier Device Package	48-LQFP (7x7)	Mounting Type	Surface Mount
Series	-	Input Type	LVDS
Package / Case	48-LQFP	Function	Deserializer
Package	Tray	Data Rate	756Mbps
Output Type	LVC MOS, LV TTL	Base Product Number	MAX9248
Operating Temperature	-40°C ~ 85°C (TA)		

### Parts with Similar Specifications

The three parts on the right have similar specifications to Analog Devices Inc./Maxim Integrated MAX9248ECM+

Product Attribute				
Part Number	MAX9248ECM+	MAX9248GCM/V+T	MAX9247ECM/V+T	MAX9248ECM+T
Manufacturer	Analog Devices Inc./Maxim Integrated	Analog Devices Inc./Maxim Integrated	Analog Devices Inc./Maxim Integrated	Analog Devices Inc./Maxim Integrated
Base Product Number	MAX9248	MAX9248	MAX9247	MAX9248
Operating Temperature	-40°C ~ 85°C (TA)	-40°C ~ 105°C (TA)	-40°C ~ 85°C (TA)	-40°C ~ 85°C (TA)
Number of Outputs	27	27	1	27
Number of Inputs	1	1	27	1
Mounting Type	Surface Mount	Surface Mount	Surface Mount	Surface Mount
Function	Deserializer	Deserializer	Serializer	Deserializer
Series	-	Automotive, AEC-Q100	Automotive, AEC-Q100	-
Data Rate	756Mbps	756Mbps	756Mbps	756Mbps
Package / Case	48-LQFP	48-LQFP	48-LQFP	48-LQFP
Input Type	LVDS	LVDS	LVC MOS, LV TTL	LVDS
Output Type	LVC MOS, LV TTL	LVC MOS, LV TTL	LVDS	LVC MOS, LV TTL
Supplier Device Package	48-LQFP (7x7)	48-LQFP (7x7)	48-LQFP (7x7)	48-LQFP (7x7)
Package	Tray	Tape & Reel (TR)	Tape & Reel (TR)	Tape & Reel (TR)
Voltage - Supply	3V ~ 3.6V	3V ~ 3.6V	3V ~ 3.6V	3V ~ 3.6V

### MAX9248ECM+ Datasheet PDF

Download MAX9248ECM+ pdf datasheets and Analog Devices Inc./Maxim Integrated documentation for MAX9248ECM+ - Analog Devices Inc./Maxim Integrated.

#### Datasheets

[MAX9248,50.pdf](#)

#### Environmental Information

[Maxim Integrated REACH.pdf](#)

[Maxim Integrated RoHS Cert.pdf](#)

#### Part Numbering Guide

[Part Numbering System.pdf](#)

#### Application Notes

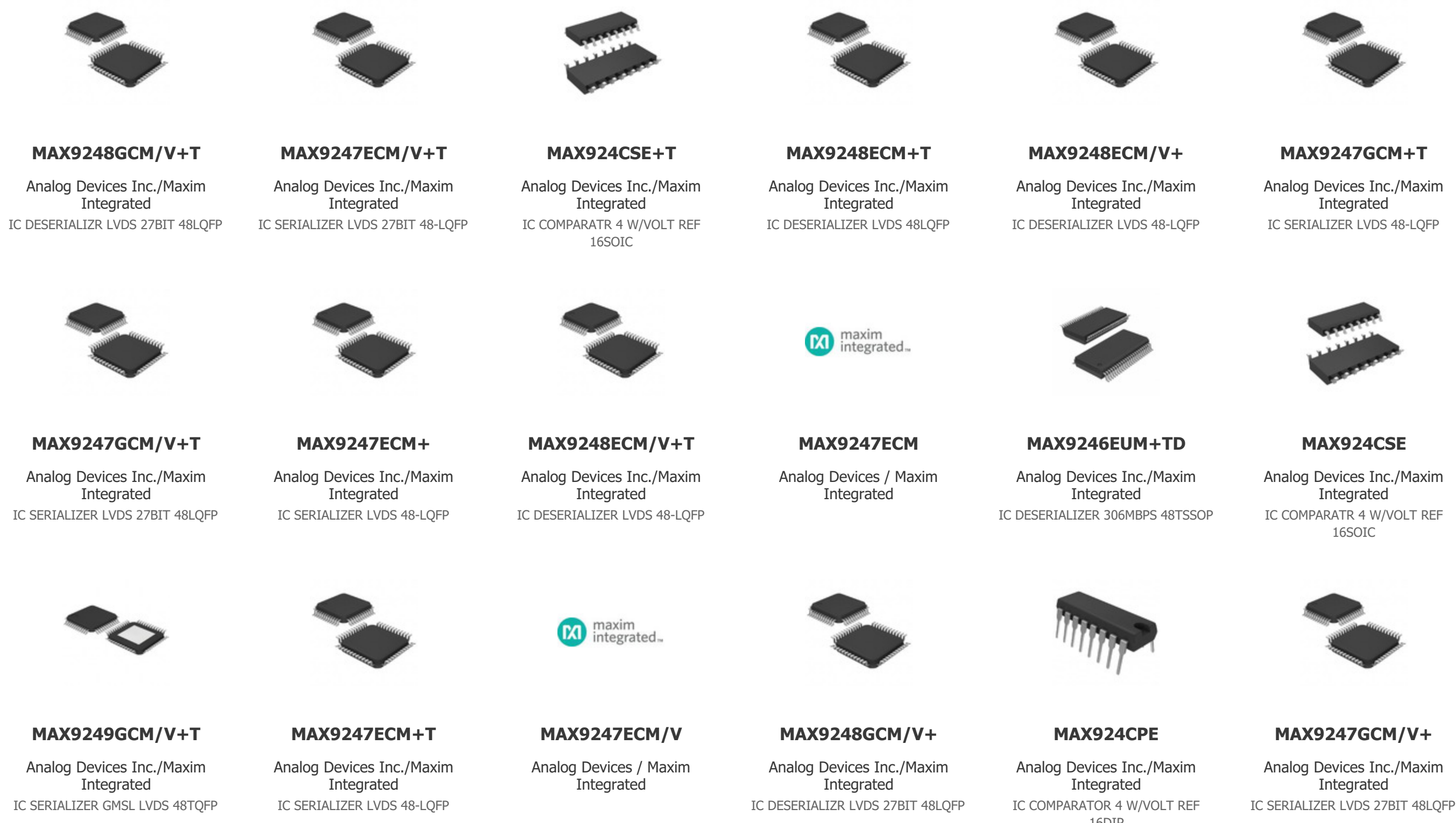
[EMI-/EMC-Ready SerDes-Basic Test Strategies and Gu.pdf](#)

[Working with MAX9217/MAX9218/MAX9247/MAX9248/MAX92.pdf](#)

[Robust, Fail-Safe Biasing Circuit for AC-Coupled M.pdf](#)

### Customers Also Interested in

#### Recommended Products



## Shipment

### Delivery Time

In-stock items can be shipped within 24 hours. Some parts will be arranged for delivery within 1-2 days from the date all items arrive at our warehouse. And Alleco ships order once a day at about 17:00, except Sunday. Once the goods are shipped, the estimated delivery time depends on the shipping methods and Delivery destination. The table below shows are the logistic time for some common countries.

### Delivery Cost

- > Use your express account for shipment if you have one.
  - > Use our account for the shipment. Refer to the table below for the approximate charges.
- (Different time frame / countries / package size has different price.)

### Delivery Method

- > Global Common Shipment by DHL / UPS / FedEx / TNT / EMS / SF we support.
- > Others more shipping ways, please get in touch with your customer manager.

Common Countries Logistic Time Reference		
Region	Country	Logistic Time(Day)
America	United States	5
	Brazil	7
Europe	Germany	5
	United Kingdom	4
	Italy	5
Oceania	Australia	6
	New Zealand	7
Asia	India	6
	Japan	7
Middle East	Israel	6

DHL & FedEx Shipment Charges Reference	
Shipment charges(KG)	Reference DHL(USD\$)
0.00kg-1.00kg	USD\$60.00
1.00kg-2.00kg	USD\$70.00
2.00kg-3.00kg	USD\$80.00

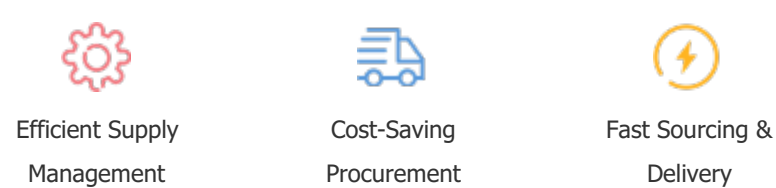
Note: The above table is for reference only. There may have some data bias for the uncontrollable factors.  
Contact us if you have any questions.

## Payment Support

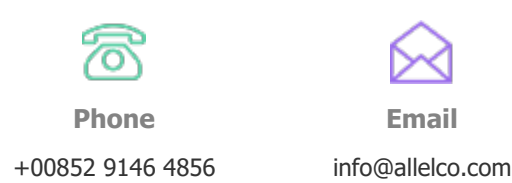
The payment method can be chosen from the methods shown below:  
Wire Transfer (T/T, Bank Transfer), Western Union, Credit card, PayPal.



## Your Faithful Supply Chain Partner -



Contact us if you have any questions.



## Certifications & Memberships



[View More](#)