

Image may be representation.
See specifications for product details.



SSA24HE3_A/H

Manufacturer Part Number	SSA24HE3_A/H
Manufacturer	Vishay General Semiconductor – Diodes Division
Allelco Part Number	32D-SSA24HE3_A/H
ECAD Model	Request Free CAD Models
Parts Description	DIODE SCHOTTKY 40V 2A DO214AC
Package	DO-214AC, SMA
Data sheet	SSA23L,SSA24.pdf
RoHs Status	ROHS3 Compliant

[Get a Quote](#)

SSA24HE3_A/H - Vishay General Semiconductor - Diodes Division. New Original in Stock. Download Linear Technology SSA24HE3_A/H datasheet/specifications on AllelcoElec.com.
Request a quote for SSA24HE3_A/H, please send us email: info@allelco.com

Specifications

SSA24HE3_A/H Tech Specifications
SSA24HE3_A/H - Vishay General Semiconductor - Diodes Division technical specifications, attributes, parameters

Product Attribute	Attribute Value	Product Attribute	Attribute Value
Manufacturer	Vishay General Semiconductor – Diodes Division	Package	Tape & Reel (TR)
Voltage - Forward (Vf) (Max) @ If	490 mV @ 2 A	Operating Temperature - Junction	-65°C ~ 150°C
Voltage - DC Reverse (Vr) (Max)	40 V	Mounting Type	Surface Mount
Technology	Schottky	Current - Reverse Leakage @ Vr	200 µA @ 30 V
Supplier Device Package	DO-214AC (SMA)	Current - Average Rectified (Io)	2A
Speed	Fast Recovery =< 500ns, > 200mA (Io)	Capacitance @ Vr, F	-
Series	Automotive, AEC-Q101	Base Product Number	SSA24
Package / Case	DO-214AC, SMA		

Parts with Similar Specifications

The three parts on the right have similar specifications to Vishay General Semiconductor - Diodes Division SSA24HE3_A/H

Product Attribute				
Part Number	SSA24HE3_A/H	SSA33L-E3/61T	SSA23L-E3/61T	SSA24HE3_A/I
Manufacturer	Vishay General Semiconductor - Diodes Division	Vishay General Semiconductor - Diodes Division	Vishay General Semiconductor - Diodes Division	Vishay General Semiconductor - Diodes Division
Voltage - DC Reverse (Vr) (Max)	40 V	30 V	30 V	40 V
Speed	Fast Recovery =< 500ns, > 200mA (Io)	Fast Recovery =< 500ns, > 200mA (Io)	Fast Recovery =< 500ns, > 200mA (Io)	Fast Recovery =< 500ns, > 200mA (Io)
Base Product Number	SSA24	SSA33	SSA23	SSA24
Series	Automotive, AEC-Q101	-	-	Automotive, AEC-Q101
Voltage - Forward (Vf) (Max) @ If	490 mV @ 2 A	450 mV @ 3 A	450 mV @ 2 A	490 mV @ 2 A
Package	Tape & Reel (TR)	Tape & Reel (TR)	Tape & Reel (TR)	Tape & Reel (TR)
Current - Reverse Leakage @ Vr	200 µA @ 30 V	500 µA @ 30 V	500 µA @ 30 V	200 µA @ 40 V
Current - Average Rectified (Io)	2A	3A	2A	2A
Supplier Device Package	DO-214AC (SMA)	DO-214AC (SMA)	DO-214AC (SMA)	DO-214AC (SMA)
Operating Temperature - Junction	-65°C ~ 150°C	-65°C ~ 150°C	-65°C ~ 150°C	-65°C ~ 150°C
Capacitance @ Vr, F	-	-	-	-
Mounting Type	Surface Mount	Surface Mount	Surface Mount	Surface Mount
Technology	Schottky	Schottky	Schottky	Schottky
Package / Case	DO-214AC, SMA	DO-214AC, SMA	DO-214AC, SMA	DO-214AC, SMA

SSA24HE3_A/H Datasheet PDF

Download SSA24HE3_A/H pdf datasheets and Vishay General Semiconductor - Diodes Division documentation for SSA24HE3_A/H - Vishay General Semiconductor - Diodes Division.

Datasheets

[SSA23L,SSA24.pdf](#)

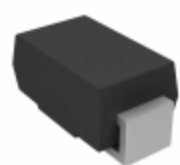
PCN Assembly/Origin

[Assembly Site 26/Aug/2021.pdf](#)

Customers Also Interested in

Recommended Products

SSA33L-E3/61T	SSA300AA80	SSA23L-E3/61T	SSA24HE3_A/I	SSA23L-E3	SSA250AA80
Vishay General Semiconductor - Diodes Division DIODE SCHOTTKY 30V 3A DO214AC	SANREX IGBT Module	Vishay General Semiconductor - Diodes Division DIODE SCHOTTKY 30V 2A DO214AC	Vishay General Semiconductor - Diodes Division DIODE SCHOTTKY 40V 2A DO214AC	Electro-Films (EFI) / Vishay	SANREX IGBT Module



SSA24HE3/61T

Vishay General Semiconductor - Diodes Division
DIODE SCHOTTKY 40V 2A DO214AC



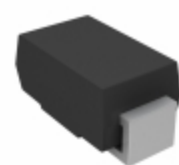
SSA23L

Electro-Films (EFI) / Vishay



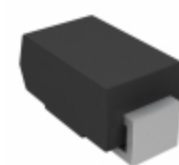
SSA24L-E3

Electro-Films (EFI) / Vishay



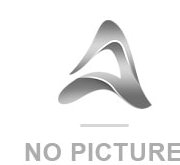
SSA24-E3/61T

Vishay General Semiconductor - Diodes Division
DIODE SCHOTTKY 40V 2A DO214AC



SSA24HE3/5AT

Vishay General Semiconductor - Diodes Division
DIODE SCHOTTKY 40V 2A DO214AC



SSA33L

VISHAYMAS



SSA320Q

GIGASTONE



SSA24HE3-A/H

Electro-Films (EFI) / Vishay



SSA24-E3

Electro-Films (EFI) / Vishay



SSA210

onsemi
DIODE SCHOTTKY 100V 2A DO214AC



SSA24/11

Electro-Films (EFI) / Vishay



SSA250AA40

SANREX
IGBT Module

Shipment

Delivery Time

In-stock items can be shipped within 24 hours. Some parts will be arranged for delivery within 1-2 days from the date all items arrive at our warehouse. And Allelco ships order once a day at about 17:00, except Sunday. Once the goods are shipped, the estimated delivery time depends on the shipping methods and Delivery destination. The table below shows are the logistic time for some common countries.

Delivery Cost

> Use your express account for shipment if you have one.

> Use our account for the shipment. Refer to the table below for the approximate charges.

(Different time frame / countries / package size has different price.)

Delivery Method

> Global Common Shipment by DHL / UPS / FedEx / TNT / EMS / SF we support.

> Others more shipping ways, please get in touch with your customer manager.

Common Countries Logistic Time Reference

Region	Country	Logistic Time(Day)
America	United States	5
	Brazil	7
Europe	Germany	5
	United Kingdom	4
	Italy	5
Oceania	Australia	6
	New Zealand	7
Asia	India	6
	Japan	7
Middle East	Israel	6

DHL & FedEx Shipment Charges Reference

Shipment charges(KG)	Reference DHL(USD\$)
0.00kg-1.00kg	USD\$60.00
1.00kg-2.00kg	USD\$70.00
2.00kg-3.00kg	USD\$80.00

Note: The above table is for reference only. There may have some data bias for the uncontrollable factors.

Contact us if you have any questions.

Payment Support

The payment method can be chosen from the methods shown below:

Wire Transfer (T/T, Bank Transfer), Western Union, Credit card, PayPal.



Your Faithful Supply Chain Partner -



Efficient Supply Management



Cost-Saving Procurement



Fast Sourcing & Delivery

Contact us if you have any questions.



Phone

+00852 9146 4856



Email

info@allelco.com

Certifications & Memberships



View More



Contact us

Address: Flat/Rm C 13/F Harvard Commercial Building 105-111 Thomson Road, Wan Chai, Hong Kong

Phone: +00852 9146 4856

Fax: +00852 3010 8510

Email: info@Allelco.com

Copyright © 2012-2023 AllelcoElec.com. All rights reserved.