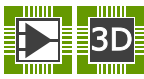



AD8548ARZ

Manufacturer Part Number	AD8548ARZ
Manufacturer	Analog Devices, Inc.
Allelco Part Number	32D-AD8548ARZ
ECAD Model	 PCB Symbol, Footprint & 3D Mode
Parts Description	IC CMOS 4 CIRCUIT 14SOIC
Package	14-SOIC (0.154", 3.90mm Width)
Data sheet	AD8546/AD8548.pdf
RoHS Status	 ROHS3 Compliant


[Get a Quote](#)

AD8548ARZ - Analog Devices Inc..New Original in Stock. Download Linear Technology AD8548ARZ datasheet/specifications on AllelcoElec.com.

Request a quote for AD8548ARZ, please send us email: info@allelco.com

Specifications





AD8548ARZ Tech Specifications

AD8548ARZ - Analog Devices Inc. technical specifications, attributes, parameters

Product Attribute	Attribute Value	Product Attribute	Attribute Value
Manufacturer	Analog Devices, Inc.	Operating Temperature	-40°C ~ 125°C
Voltage - Supply Span (Min)	2.7 V	Number of Circuits	4
Voltage - Supply Span (Max)	18 V	Mounting Type	Surface Mount
Voltage - Input Offset	3 mV	Gain Bandwidth Product	200 kHz
Supplier Device Package	14-SOIC	Current - Supply	18µA (x4 Channels)
Slew Rate	0.08V/µs	Current - Output / Channel	12 mA
Series	-	Current - Input Bias	5 pA
Package / Case	14-SOIC (0.154", 3.90mm Width)	Base Product Number	AD8548
Package	Tube	Amplifier Type	CMOS
Output Type	Rail-to-Rail	-3db Bandwidth	310 kHz

Parts with Similar Specifications


The three parts on the right have similar specifications to Analog Devices Inc. AD8548ARZ

Product Attribute				
Part Number	AD8548ARZ	AD8546ARMZ	AD8544ARZ	AD8544WARZ-R7
Manufacturer	Analog Devices Inc.	Analog Devices Inc.	Analog Devices Inc.	Analog Devices Inc.
Slew Rate	0.08V/µs	0.08V/µs	0.92V/µs	0.92V/µs
Mounting Type	Surface Mount	Surface Mount	Surface Mount	Surface Mount
Package	Tube	Tube	Tube	Tape & Reel (TR)
-3db Bandwidth	310 kHz	310 kHz	-	-
Base Product Number	AD8548	AD8546	AD8544	AD8544
Package / Case	14-SOIC (0.154", 3.90mm Width)	8-TSSOP, 8-MSOP (0.118", 3.00mm Width)	14-SOIC (0.154", 3.90mm Width)	14-SOIC (0.154", 3.90mm Width)
Supplier Device Package	14-SOIC	8-MSOP	14-SOIC	14-SOIC
Series	-	-	-	-
Current - Supply	18µA (x4 Channels)	18µA (x2 Channels)	45µA (x4 Channels)	45µA (x4 Channels)
Gain Bandwidth Product	200 kHz	200 kHz	1 MHz	1 MHz
Output Type	Rail-to-Rail	Rail-to-Rail	Rail-to-Rail	Rail-to-Rail
Current - Output / Channel	12 mA	12 mA	30 mA	30 mA
Operating Temperature	-40°C ~ 125°C	-40°C ~ 125°C	-40°C ~ 125°C	-40°C ~ 125°C
Voltage - Supply Span (Max)	18 V	18 V	5.5 V	5.5 V
Amplifier Type	CMOS	CMOS	General Purpose	General Purpose
Voltage - Input Offset	3 mV	3 mV	1 mV	1 mV
Voltage - Supply Span (Min)	2.7 V	2.7 V	2.7 V	2.7 V
Number of Circuits	4	2	4	4
Current - Input Bias	5 pA	5 pA	4 pA	4 pA

AD8548ARZ Datasheet PDF

Download AD8548ARZ pdf datasheets and Analog Devices Inc. documentation for AD8548ARZ - Analog Devices Inc..

Datasheets

 AD8546/AD8548.pdf

Customers Also Interested in

Recommended Products



AD8546ARMZ
Analog Devices Inc.
IC CMOS 2 CIRCUIT 8MSOP

AD8544ARZ
Analog Devices Inc.
IC OPAMP GP 4 CIRCUIT 14SOIC



AD8544ARZ-R7
ADI (Analog Devices, Inc.)



AD8544WARZ-R7
Analog Devices Inc.
IC OPAMP GP 4 CIRCUIT 14SOIC



AD8551ARZ
Analog Devices Inc.
IC OPAMP ZERO-DRIFT 1 CIRC 8SOIC

AD8548ARZ-R7
Analog Devices Inc.
IC CMOS 4 CIRCUIT 14SOIC



AD8551ARMZ
Analog Devices Inc.
IC OPAMP ZERO-DRIFT 1 CIRC 8MSOP



AD8552AR
Analog Devices Inc.
IC OPAMP ZERO-DRIFT 2 CIRC 8SOIC



AD8544ARZ-REEL
Analog Devices Inc.
IC OPAMP GP 4 CIRCUIT 14SOIC



AD8551ARMZ-REEL
Analog Devices Inc.
IC OPAMP ZERO-DRIFT 1 CIRC 8MSOP



AD8544ARU-REEL
Analog Devices Inc.
IC OPAMP GP R-R CMOS 14TSSOP



AD8551ARZ-REEL7
Analog Devices Inc.
IC OPAMP ZERO-DRIFT 1 CIRC 8SOIC



AD8544ARUZ-REEL
Analog Devices Inc.
IC OPAMP GP 4 CIRCUIT 14TSSOP



AD8551
HG/HX



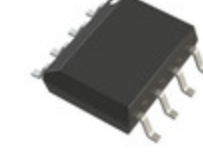
AD8544ARZ-REEL7
Analog Devices Inc.
IC OPAMP GP 4 CIRCUIT 14SOIC



AD8544ARUZ
Analog Devices Inc.
IC OPAMP GP 4 CIRCUIT 14TSSOP



AD8544ARUZ-REEL7
ADI (Analog Devices, Inc.)



AD8551AR
Analog Devices Inc.
IC OPAMP CHOPPER R-R 30MA 8SOIC

Shipment

Delivery Time

In-stock items can be shipped within 24 hours. Some parts will be arranged for delivery within 1-2 days from the date all items arrive at our warehouse. And Allelco ships order once a day at about 17:00, except Sunday. Once the goods are shipped, the estimated delivery time depends on the shipping methods and Delivery destination. The table below shows are the logistic time for some common countries.

Delivery Cost

- > Use your express account for shipment if you have one.
 - > Use our account for the shipment. Refer to the table below for the approximate charges.
- (Different time frame / countries / package size has different price.)

Delivery Method

- > Global Common Shipment by DHL / UPS / FedEx / TNT / EMS / SF we support.
- > Others more shipping ways, please get in touch with your customer manager.

Common Countries Logistic Time Reference		
Region	Country	Logistic Time(Day)
America	United States	5
	Brazil	7
Europe	Germany	5
	United Kingdom	4
	Italy	5
Oceania	Australia	6
	New Zealand	7
Asia	India	6
	Japan	7
Middle East	Israel	6

DHL & FedEx Shipment Charges Reference	
Shipment charges(KG)	Reference DHL(USD\$)
0.00kg-1.00kg	USD\$60.00
1.00kg-2.00kg	USD\$70.00
2.00kg-3.00kg	USD\$80.00

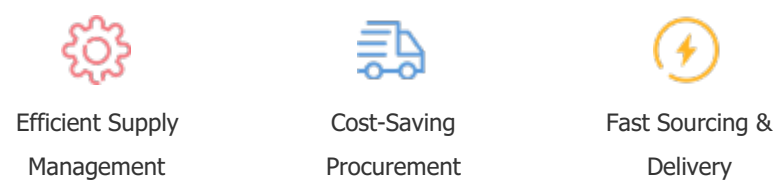
Note: The above table is for reference only. There may have some data bias for the uncontrollable factors.
Contact us if you have any questions.

Payment Support

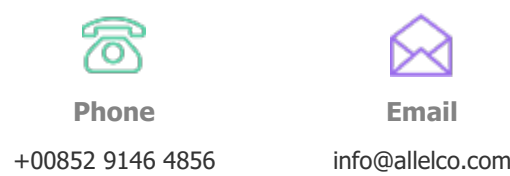
The payment method can be chosen from the methods shown below:
Wire Transfer (T/T, Bank Transfer), Western Union, Credit card, PayPal.



Your Faithful Supply Chain Partner -



Contact us if you have any questions.



Certifications & Memberships



[View More](#)