

Image may be representation.
See specifications for product details.



XC17256EPD8C

Manufacturer Part Number	XC17256EPD8C
Manufacturer	AMD Xilinx
Allelco Part Number	32D-XC17256EPD8C
ECAD Model	Request Free CAD Models
Parts Description	IC SERIAL CFG PROM 256K 8-DIP
Package	8-DIP (0.300", 7.62mm)
Data sheet	XC17256EPD8C.pdf

Get a Quote

XC17256EPD8C - AMD.New Original in Stock. Download Linear Technology XC17256EPD8C datasheet/specifications on AllelcoElec.com.
Request a quote for XC17256EPD8C, please send us email: info@allelco.com

Specifications

XC17256EPD8C Tech Specifications
XC17256EPD8C - AMD technical specifications, attributes, parameters

Product Attribute	Attribute Value	Product Attribute	Attribute Value
Manufacturer	AMD Xilinx	Package	Tube
Voltage - Supply	4.75V ~ 5.25V	Operating Temperature	0°C ~ 70°C
Supplier Device Package	8-PDIP	Mounting Type	Through Hole
Series	-	Memory Size	256Kb
Programmable Type	OTP	Base Product Number	XC17256E
Package / Case	8-DIP (0.300", 7.62mm)		

Parts with Similar Specifications

The three parts on the right have similar specifications to AMD XC17256EPD8C

Product Attribute				
Part Number	XC17256EPD8C	XC17256EPD8I	XC17256EPC20I	XC17256ELPD8C
Manufacturer	AMD	AMD	AMD	AMD
Supplier Device Package	8-PDIP	8-PDIP	20-PLCC (9x9)	8-PDIP
Series	-	-	-	-
Base Product Number	XC17256E	XC17256E	XC17256E	XC17256EL
Package / Case	8-DIP (0.300", 7.62mm)	8-DIP (0.300", 7.62mm)	20-LCC (J-Lead)	8-DIP (0.300", 7.62mm)
Package	Tube	Tube	Tube	Tube
Memory Size	256Kb	256Kb	256Kb	256Kb
Voltage - Supply	4.75V ~ 5.25V	4.5V ~ 5.5V	4.5V ~ 5.5V	3V ~ 3.6V
Mounting Type	Through Hole	Through Hole	Surface Mount	Through Hole
Operating Temperature	0°C ~ 70°C	-40°C ~ 85°C	-40°C ~ 85°C	0°C ~ 70°C
Programmable Type	OTP	OTP	OTP	OTP

XC17256EPD8C Datasheet PDF

Download XC17256EPD8C pdf datasheets and AMD documentation for XC17256EPD8C - AMD.

Environmental Information

[Xilinx REACH211 Cert.pdf](#)

PCN Obsolescence/ EOL

[XC4000E,XLA,1700L,E,EL,17S00,XL Families 28/Jul/20.pdf](#)

[XC1700, 5200, HQ, SCD Families 19/Jul/2010.pdf](#)

Customers Also Interested in

Recommended Products

XC17256XVI XINLINX	XC17256EPD8I AMD IC PROM SER I-TEMP 256K 8-DIP	XC17256EPC AMD Xilinx	XC17256EPC20I AMD IC PROM SER I-TEMP 256K 20-PLCC	XC17256ELPD8C AMD IC 3V SER CFG PROM 256K 8-DIP	XC17256EJC AMD Xilinx
XC17256EPDG8C AMD IC PROM SERIAL 256K 8-DIP	XC17256ELV08C AMD Xilinx	XC17256EJI AMD Xilinx	XC17256DVC AMD Xilinx	XC17256LPD8C AMD Xilinx	XC17256XVC AMD Xilinx



XC1736A
AMD Xilinx

XC17256EPC20C
AMD
IC SERIAL CFG PROM 256K 20-PLCC

XC17256XPC
AMD Xilinx

XC17256XJC
AMD Xilinx

XC17256ELV08C
AMD
IC 3V SER CFG PROM 256K 8-SOIC

XC17256EDD8M
AMD Xilinx

Shipment

Delivery Time

In-stock items can be shipped within 24 hours. Some parts will be arranged for delivery within 1-2 days from the date all items arrive at our warehouse. And Allelco ships order once a day at about 17:00, except Sunday. Once the goods are shipped, the estimated delivery time depends on the shipping methods and Delivery destination. The table below shows are the logistic time for some common countries.

Delivery Cost

- > Use your express account for shipment if you have one.
 - > Use our account for the shipment. Refer to the table below for the approximate charges.
- (Different time frame / countries / package size has different price.)

Delivery Method

- > Global Common Shipment by DHL / UPS / FedEx / TNT / EMS / SF we support.
- > Others more shipping ways, please get in touch with your customer manager.

Common Countries Logistic Time Reference		
Region	Country	Logistic Time(Day)
America	United States	5
	Brazil	7
Europe	Germany	5
	United Kingdom	4
	Italy	5
Oceania	Australia	6
	New Zealand	7
Asia	India	6
	Japan	7
Middle East	Israel	6

DHL & FedEx Shipment Charges Reference	
Shipment charges(KG)	Reference DHL(USD\$)
0.00kg-1.00kg	USD\$60.00
1.00kg-2.00kg	USD\$70.00
2.00kg-3.00kg	USD\$80.00

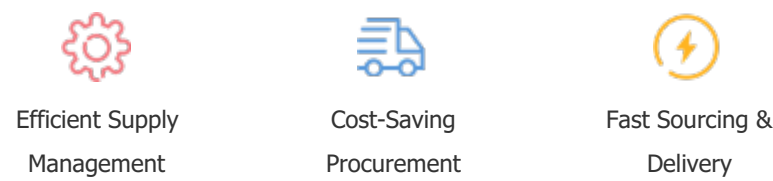
Note: The above table is for reference only. There may have some data bias for the uncontrollable factors.
Contact us if you have any questions.

Payment Support

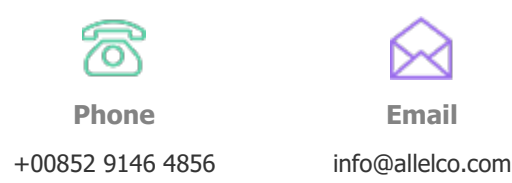
The payment method can be chosen from the methods shown below:
Wire Transfer (T/T, Bank Transfer), Western Union, Credit card, PayPal.



Your Faithful Supply Chain Partner -



Contact us if you have any questions.



Certifications & Memberships



[View More](#)



Contact us

Address: Flat/Rm C 13/F Harvard Commercial Building 105-111 Thomson Road, Wan Chai, Hong Kong
Phone: +00852 9146 4856
Fax: +00852 3010 8510
Email: info@Allelco.com