

Image may be representation.
See specifications for product details.



MAX6593TG9A+T

| | |
|--------------------------|----------------------------|
| Manufacturer Part Number | MAX6593TG9A+T |
| Manufacturer | Maxim Integrated |
| Allelco Part Number | 32D-MAX6593TG9A+T |
| ECAD Model | Request Free CAD Models |
| Parts Description | IC TEMP SENSOR 6-CH 24TQFN |
| Package | - |
| Data sheet | MAX6593TG9A+T.pdf |
| RoHs Status | ROHS3 Compliant |

Get a Quote

MAX6593TG9A+T - Analog Devices Inc./Maxim Integrated.New Original in Stock. Download Linear Technology MAX6593TG9A+T datasheet/specifications on AllelcoElec.com.
Request a quote for MAX6593TG9A+T, please send us email: info@allelco.com

Specifications

MAX6593TG9A+T Tech Specifications

MAX6593TG9A+T - Analog Devices Inc./Maxim Integrated technical specifications, attributes, parameters

| Product Attribute | Attribute Value | Product Attribute | Attribute Value |
|----------------------------|------------------|------------------------|-----------------|
| Manufacturer | Maxim Integrated | Output Function | - |
| Trip Temperature Threshold | - | Output | - |
| Switching Temperature | - | Operating Temperature | - |
| Supplier Device Package | - | Mounting Type | - |
| Series | - | Features | - |
| Selectable Hysteresis | - | Current - Supply | - |
| Package / Case | - | Current - Output (Max) | - |
| Package | Tape & Reel (TR) | Base Product Number | MAX659 |
| Output Type | - | Accuracy | - |

Parts with Similar Specifications

The three parts on the right have similar specifications to Analog Devices Inc./Maxim Integrated MAX6593TG9A+T

| Product Attribute | | | | |
|----------------------------|--------------------------------------|--------------------------------------|---|--|
| Part Number | MAX6593TG9A+T | MAX658CSD | MAX6581TG98+T | MAX6602UE9A+ |
| Manufacturer | Analog Devices Inc./Maxim Integrated | Analog Devices Inc./Maxim Integrated | Analog Devices Inc./Maxim Integrated | Analog Devices Inc./Maxim Integrated |
| Selectable Hysteresis | - | - | - | - |
| Package | Tape & Reel (TR) | Bulk | Tape & Reel (TR) | Tube |
| Features | - | - | Output Switch, Programmable Limit, Standby Mode | Output Switch, Programmable Limit, Shutdown Mode, Standby Mode |
| Current - Supply | - | - | - | - |
| Supplier Device Package | - | 14-SOIC | 24-TQFN (4x4) | 16-TSSOP |
| Series | - | - | - | - |
| Package / Case | - | 14-SOIC (0.154", 3.90mm Width) | 24-WFQFN Exposed Pad | 16-TSSOP (0.173", 4.40mm Width) |
| Accuracy | - | - | - | - |
| Switching Temperature | - | - | - | - |
| Output | - | - | - | - |
| Operating Temperature | - | 0°C ~ 70°C | -40°C ~ 125°C | -40°C ~ 125°C |
| Base Product Number | MAX659 | MAX658 | MAX6581 | MAX6602 |
| Current - Output (Max) | - | - | - | - |
| Mounting Type | - | Surface Mount | Surface Mount | Surface Mount |
| Trip Temperature Threshold | - | - | - | - |
| Output Type | - | Fixed | I ² C/SMBus | SMBus |
| Output Function | - | - | - | - |

MAX6593TG9A+T Datasheet PDF

Download MAX6593TG9A+T pdf datasheets and Analog Devices Inc./Maxim Integrated documentation for MAX6593TG9A+T - Analog Devices Inc./Maxim Integrated.

Environmental Information

Maxim Integrated REACH.pdf

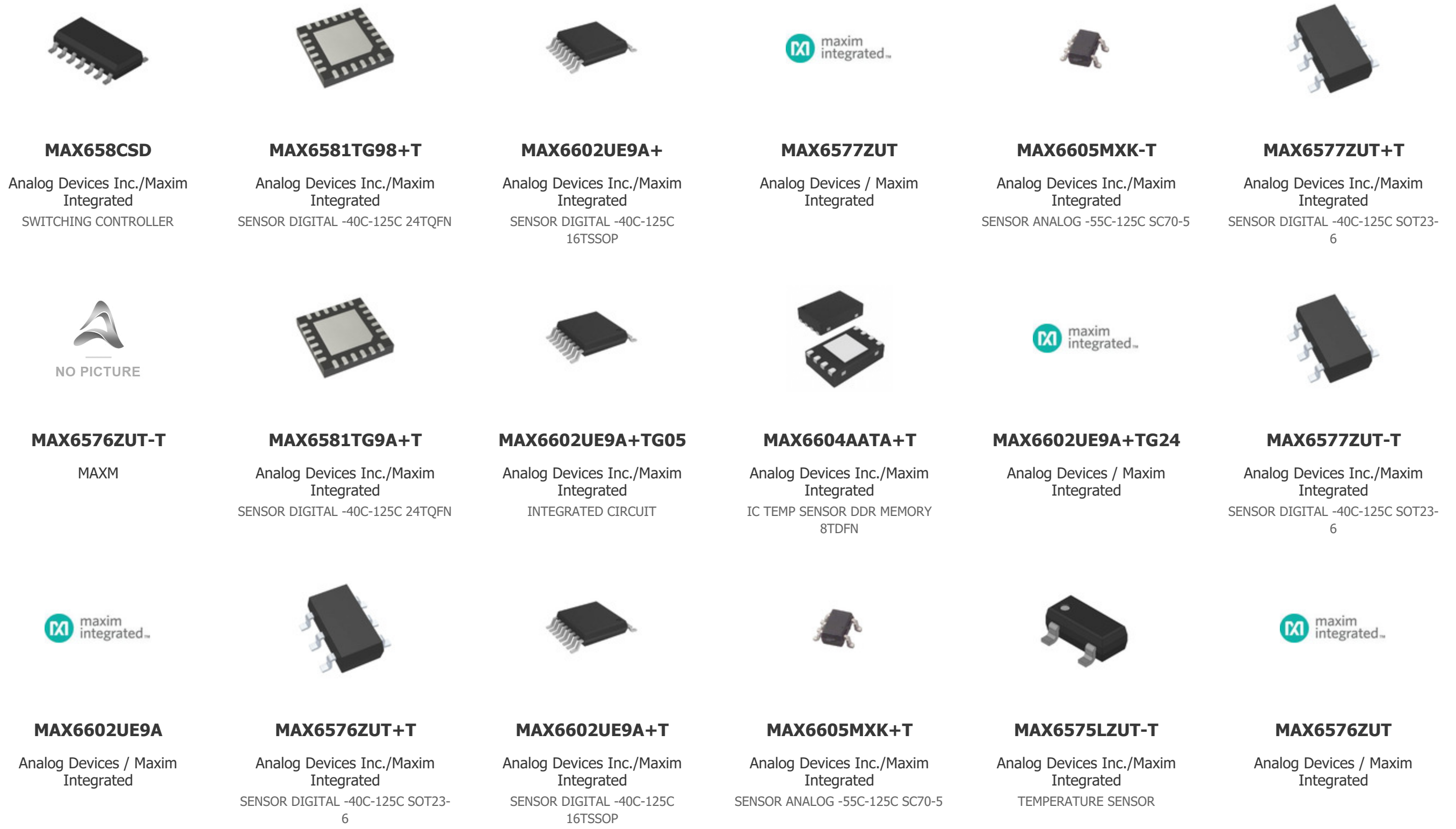
Maxim Integrated RoHS Cert.pdf

PCN Obsolescence/ EOL

Cylindrical Battery Holders.pdf

Customers Also Interested in

Recommended Products



Shipment

Delivery Time

In-stock items can be shipped within 24 hours. Some parts will be arranged for delivery within 1-2 days from the date all items arrive at our warehouse. And Alleco ships order once a day at about 17:00, except Sunday. Once the goods are shipped, the estimated delivery time depends on the shipping methods and Delivery destination. The table below shows are the logistic time for some common countries.

Delivery Cost

> Use your express account for shipment if you have one.

> Use our account for the shipment. Refer to the table below for the approximate charges.

(Different time frame / countries / package size has different price.)

Delivery Method

> Global Common Shipment by DHL / UPS / FedEx / TNT / EMS / SF we support.

> Others more shipping ways, please get in touch with your customer manager.

| Common Countries Logistic Time Reference | | |
|--|----------------|--------------------|
| Region | Country | Logistic Time(Day) |
| America | United States | 5 |
| | Brazil | 7 |
| Europe | Germany | 5 |
| | United Kingdom | 4 |
| | Italy | 5 |
| Oceania | Australia | 6 |
| | New Zealand | 7 |
| Asia | India | 6 |
| | Japan | 7 |
| Middle East | Israel | 6 |

| DHL & FedEx Shipment Charges Reference | |
|--|----------------------|
| Shipment charges(KG) | Reference DHL(USD\$) |
| 0.00kg-1.00kg | USD\$60.00 |
| 1.00kg-2.00kg | USD\$70.00 |
| 2.00kg-3.00kg | USD\$80.00 |

Note: The above table is for reference only. There may have some data bias for the uncontrollable factors.

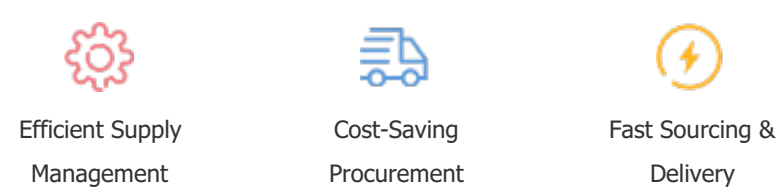
Contact us if you have any questions.

Payment Support

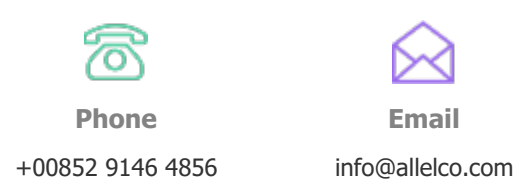
The payment method can be chosen from the methods shown below:
Wire Transfer (T/T, Bank Transfer), Western Union, Credit card, PayPal.



Your Faithful Supply Chain Partner -



Contact us if you have any questions.



Certifications & Memberships



[View More](#)