

Image may be representation.
See specifications for product details.



MAX16016PTBZ+T

Manufacturer Part Number	MAX16016PTBZ+T
Manufacturer	Maxim Integrated
Allelco Part Number	32D-MAX16016PTBZ+T
ECAD Model	Request Free CAD Models
Parts Description	IC SUPERVISOR 1 CHANNEL 10TDFN
Package	10-WDFN Exposed Pad
Data sheet	MAX16016,20,21.pdf
RoHs Status	ROHS3 Compliant

Get a Quote

MAX16016PTBZ+T - Analog Devices Inc./Maxim Integrated.New Original in Stock. Download Linear Technology MAX16016PTBZ+T datasheet/specifications on AllelcoElec.com.
Request a quote for MAX16016PTBZ+T, please send us email: info@allelco.com

Specifications

MAX16016PTBZ+T Tech Specifications
MAX16016PTBZ+T - Analog Devices Inc./Maxim Integrated technical specifications, attributes, parameters

Product Attribute	Attribute Value	Product Attribute	Attribute Value
Manufacturer	Maxim Integrated	Package / Case	10-WDFN Exposed Pad
Voltage - Threshold	2.32V	Package	Tape & Reel (TR)
Type	Simple Reset/Power-On Reset	Output	Open Drain or Open Collector
Supplier Device Package	10-TDFN (3x3)	Operating Temperature	-40°C ~ 85°C (TA)
Series	-	Number of Voltages Monitored	1
Reset Timeout	145ms Minimum	Mounting Type	Surface Mount
Reset	Active Low	Base Product Number	MAX16016

Parts with Similar Specifications

The three parts on the right have similar specifications to Analog Devices Inc./Maxim Integrated MAX16016PTBZ+T

Product Attribute				
Part Number	MAX16016PTBZ+T	MAX16009TG+T	MAX16025TE+	MAX16013TT+T
Manufacturer	Analog Devices Inc./Maxim Integrated	Analog Devices Inc./Maxim Integrated	Analog Devices Inc./Maxim Integrated	Analog Devices Inc./Maxim Integrated
Series	-	-	-	-
Package	Tape & Reel (TR)	Tape & Reel (TR)	Tube	Tape & Reel (TR)
Number of Voltages Monitored	1	4	2	1
Package / Case	10-WDFN Exposed Pad	24-WQFN Exposed Pad	16-WQFN Exposed Pad	6-WDFN Exposed Pad
Supplier Device Package	10-TDFN (3x3)	24-TQFN (4x4)	16-TQFN (4x4)	6-TDFN (3x3)
Reset	Active Low	Active Low	Active Low	Active Low
Output	Open Drain or Open Collector	Open Drain or Open Collector	Open Drain or Open Collector	Open Drain or Open Collector
Mounting Type	Surface Mount	Surface Mount	Surface Mount	Surface Mount
Voltage - Threshold	2.32V	Adjustable/Selectable	9 Selectable Threshold Combinations	Adjustable/Selectable
Type	Simple Reset/Power-On Reset	Multi-Voltage Supervisor	Sequencer	Simple Reset/Power-On Reset
Reset Timeout	145ms Minimum	Adjustable/Selectable	140ms/Adjustable Minimum	<1ms Minimum
Operating Temperature	-40°C ~ 85°C (TA)	-40°C ~ 125°C (TA)	-40°C ~ 125°C (TA)	-40°C ~ 125°C (TA)
Base Product Number	MAX16016	MAX16009	MAX16025	MAX16013

MAX16016PTBZ+T Datasheet PDF

Download MAX16016PTBZ+T pdf datasheets and Analog Devices Inc./Maxim Integrated documentation for MAX16016PTBZ+T - Analog Devices Inc./Maxim Integrated.

Datasheets

[MAX16016,20,21.pdf](#)

Environmental Information

[Maxim Integrated RoHS Cert.pdf](#)

[Material Declaration MAX16016PTBZ+T.pdf](#)

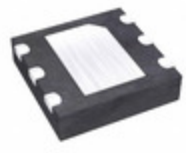
Part Numbering Guide

[Part Numbering System.pdf](#)

Customers Also Interested in

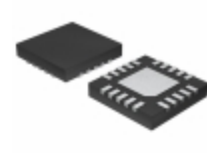
Recommended Products

MAX16009TG+T	MAX16025TE+	MAX16013TT+T	MAX16021LTES+T	MAX16023PTAT12+T	MAX16025TE+T
Analog Devices Inc./Maxim Integrated	Analog Devices Inc./Maxim Integrated	Analog Devices Inc./Maxim Integrated	Analog Devices Inc./Maxim Integrated	Analog Devices Inc./Maxim Integrated	Analog Devices Inc./Maxim Integrated
IC SUPERVISOR 4 CHANNEL 24TQFN	IC SUPERVISOR 2 CHANNEL 16TQFN	IC SUPERVISOR 1 CHANNEL 6TDFN	IC SUPERVISOR 1 CHANNEL 16TQFN	IC SUPERVISOR 1 CHANNEL 8TDFN	IC SUPERVISOR 2 CHANNEL 16TQFN



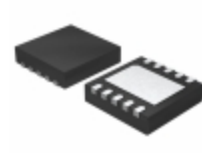
MAX16012TT+T

Analog Devices Inc./Maxim Integrated
IC SUPERVISOR 1 CHANNEL 6TDFN



MAX16008TP+T

Analog Devices Inc./Maxim Integrated
IC SUPERVISOR 4 CHANNEL 20TQFN



MAX16024LTBL+T

Analog Devices Inc./Maxim Integrated
IC BATTERY BACKUP ADJ 10TDFN



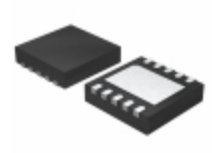
MAX16010TAB+T

Analog Devices Inc./Maxim Integrated
IC SUPERVISOR 2 CHANNEL 8TDFN



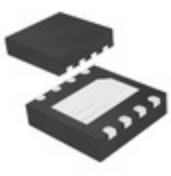
MAX1600EAI

Analog Devices / Maxim Integrated



MAX16016LTBR+T

Analog Devices Inc./Maxim Integrated
IC SUPERVISOR 1 CHANNEL 10TDFN



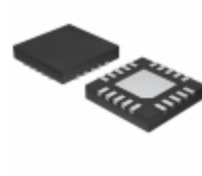
MAX16010TAB+

Analog Devices Inc./Maxim Integrated
IC SUPERVISOR 2 CHANNEL 8TDFN



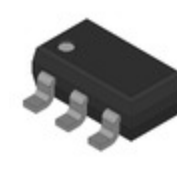
MAX16024LTBW+T

Analog Devices Inc./Maxim Integrated
IC SUPERVISOR 1 CHANNEL 10TDFN



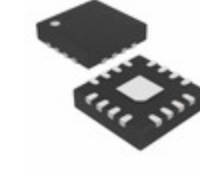
MAX16027TP+

Analog Devices Inc./Maxim Integrated
IC SUPERVISOR 3 CHANNEL 20TQFN



MAX16010TAA-T

Analog Devices Inc./Maxim Integrated
IC SUPERVISOR 2 CHANNEL 8TDFN



MAX16021LTER+T

Analog Devices Inc./Maxim Integrated
IC SUPERVISOR PP 2.640V 16TQFN



MAX16011TAC+T

Analog Devices Inc./Maxim Integrated
IC SUPERVISOR 2 CHANNEL 8TDFN

Shipment

Delivery Time

In-stock items can be shipped within 24 hours. Some parts will be arranged for delivery within 1-2 days from the date all items arrive at our warehouse. And Allelco ships order once a day at about 17:00, except Sunday. Once the goods are shipped, the estimated delivery time depends on the shipping methods and Delivery destination. The table below shows are the logistic time for some common countries.

Delivery Cost

> Use your express account for shipment if you have one.

> Use our account for the shipment. Refer to the table below for the approximate charges.

(Different time frame / countries / package size has different price.)

Delivery Method

> Global Common Shipment by DHL / UPS / FedEx / TNT / EMS / SF we support.

> Others more shipping ways, please get in touch with your customer manager.

Common Countries Logistic Time Reference		
Region	Country	Logistic Time(Day)
America	United States	5
	Brazil	7
Europe	Germany	5
	United Kingdom	4
	Italy	5
Oceania	Australia	6
	New Zealand	7
Asia	India	6
	Japan	7
Middle East	Israel	6

DHL & FedEx Shipment Charges Reference	
Shipment charges(KG)	Reference DHL(USD\$)
0.00kg-1.00kg	USD\$60.00
1.00kg-2.00kg	USD\$70.00
2.00kg-3.00kg	USD\$80.00

Note: The above table is for reference only. There may have some data bias for the uncontrollable factors.

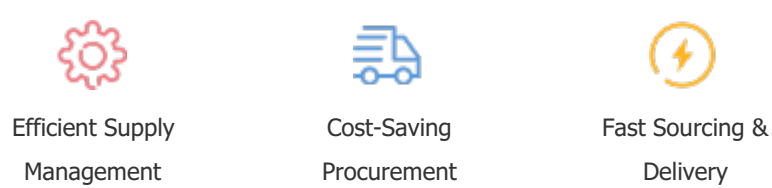
Contact us if you have any questions.

Payment Support

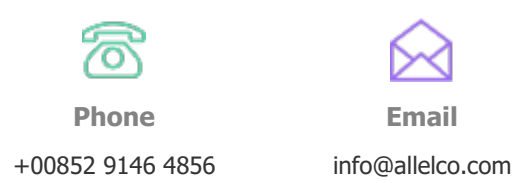
The payment method can be chosen from the methods shown below:
Wire Transfer (T/T, Bank Transfer), Western Union, Credit card, PayPal.



Your Faithful Supply Chain Partner -



Contact us if you have any questions.



Certifications & Memberships



View More



Contact us

Address: Flat/Rm C 13/F Harvard Commercial Building 105-111 Thomson Road, Wan Chai, Hong Kong

Phone: +00852 9146 4856

Fax: +00852 3010 8510

Email: info@Allelco.com

Copyright © 2012-2023 AllelcoElec.com. All rights reserved.