

Image may be representation.
See specifications for product details.



VN820PTTR-E

Manufacturer Part Number	VN820PTTR-E
Manufacturer	STMicroelectronics
Allelco Part Number	32D-VN820PTTR-E
ECAD Model	PCB Footprint and Symbol
Parts Description	IC PWR DRIVER N-CHANNEL 1:1 PPAK
Package	TO-252-5, DPak (4 Leads + Tab), TO-252AD
Data sheet	VN820-E.pdf
RoHs Status	ROHS3 Compliant

Get a Quote

VN820PTTR-E - STMicroelectronics.New Original in Stock. Download Linear Technology VN820PTTR-E datasheet/specifications on AllelcoElec.com.
Request a quote for VN820PTTR-E, please send us email: info@allelco.com

Specifications

VN820PTTR-E Tech Specifications

VN820PTTR-E - STMicroelectronics technical specifications, attributes, parameters

Product Attribute	Attribute Value	Product Attribute	Attribute Value
Manufacturer	STMicroelectronics	Output Configuration	High Side
Voltage - Supply (Vcc/Vdd)	Not Required	Operating Temperature	-40°C ~ 150°C (TJ)
Voltage - Load	5.5V ~ 36V	Number of Outputs	1
Switch Type	General Purpose	Mounting Type	Surface Mount
Supplier Device Package	PPAK	Interface	On/Off
Series	VIPower™	Input Type	Non-Inverting
Rds On (Typ)	40mOhm (Max)	Features	Auto Restart, Status Flag
Ratio - Input:Output	1:1	Fault Protection	Current Limiting (Fixed), Open Load Detect, Over Temperature, Over Voltage
Package / Case	TO-252-5, DPak (4 Leads + Tab), TO-252AD	Current - Output (Max)	9A
Package	Tape & Reel (TR)	Base Product Number	VN820
Output Type	N-Channel		

Parts with Similar Specifications

The three parts on the right have similar specifications to STMicroelectronics VN820PTTR-E

Product Attribute				
Part Number	VN820PTTR-E	VN820-B513TR	VN808SR	VN808TR-32-E
Manufacturer	STMicroelectronics	STMicroelectronics	STMicroelectronics	STMicroelectronics
Current - Output (Max)	9A	9A	700mA	1A
Input Type	Non-Inverting	Non-Inverting	Non-Inverting	Non-Inverting
Voltage - Supply (Vcc/Vdd)	Not Required	Not Required	Not Required	Not Required
Mounting Type	Surface Mount	Surface Mount	Surface Mount	Surface Mount
Base Product Number	VN820	VN820	VN808	VN808
Output Type	N-Channel	N-Channel	N-Channel	N-Channel
Interface	On/Off	On/Off	On/Off	On/Off
Package / Case	TO-252-5, DPak (4 Leads + Tab), TO-252AD	P ² PAK (4 Leads + Tab)	36-PowerBSSOP (0.433", 11.00mm Width)	36-PowerBSSOP (0.433", 11.00mm Width)
Number of Outputs	1	1	8	8
Fault Protection	Current Limiting (Fixed), Open Load Detect, Over Temperature, Over Voltage	Current Limiting (Fixed), Open Load Detect, Over Temperature, Over Voltage	Current Limiting (Fixed), Over Temperature	Current Limiting (Fixed), Over Temperature
Voltage - Load	5.5V ~ 36V	5.5V ~ 36V	10.5V ~ 45V	10.5V ~ 45V
Output Configuration	High Side	High Side	High Side	High Side
Ratio - Input:Output	1:1	1:1	1:1	1:1
Rds On (Typ)	40mOhm (Max)	40mOhm (Max)	150mOhm	150mOhm
Supplier Device Package	PPAK	P ² PAK	PowerSO-36, Bottom Pad	PowerSO-36, Bottom Pad
Switch Type	General Purpose	General Purpose	General Purpose	General Purpose
Package	Tape & Reel (TR)	Tape & Reel (TR)	Tube	Tape & Reel (TR)
Operating Temperature	-40°C ~ 150°C (TJ)	-40°C ~ 150°C (TJ)	-40°C ~ 125°C (TJ)	-40°C ~ 125°C (TJ)
Features	Auto Restart, Status Flag	Auto Restart, Status Flag	Auto Restart, Status Flag	Auto Restart, Status Flag
Series	VIPower™	-	VIPower™	VIPower™

VN820PTTR-E Datasheet PDF

Download VN820PTTR-E pdf datasheets and STMicroelectronics documentation for VN820PTTR-E - STMicroelectronics.

PCN Packaging

[Material Barrier Bag 17/Dec/2020.pdf](#)

[Mult Dev Inner Box Chg 9/Dec/2021.pdf](#)

HTML Datasheet

VN820-E.pdf

PCN Assembly/Origin

VN820PTTR-E/VN750PTTR-E 21/Nov/2022.pdf

Customers Also Interested in

Recommended Products



VN820-B513TR

STMicroelectronics
IC PWR DRIVER N-CHAN 1:1 P2PAK



VN808SR

STMicroelectronics
IC PWR DRIVER N-CHAN 1:1 PWR5036



VN810EF

Monolithic Power Systems



VN820PTTRE

STMicroelectronics



VN808EF

Monolithic Power Systems



VN808TR-32-E

STMicroelectronics
IC PWR DRIVER N-CHAN 1:1 PWR5036



VN808TR

STMicroelectronics



VN820B5TR-E

STMicroelectronics
IC PWR DRIVER N-CHAN 1:1 P2PAK



VN808TR-E

STMicroelectronics
IC PWR DRIVER N-CHAN 1:1 PWR5036



VN820D-B513TR

STMicroelectronics



VN820SP

STMicroelectronics
IC PWR DRIVER N-CHAN 1:1 PWR5010



VN820PT13TR

STMicroelectronics
IC PWR DRIVER N-CHANNEL 1:1 PPAK



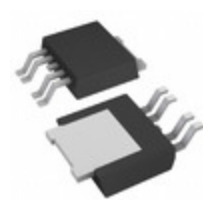
VN820B5-E

STMicroelectronics
IC PWR DRIVER N-CHAN 1:1 P2PAK



VN808SR13TR

STMicroelectronics
IC PWR DRIVER N-CHAN 1:1 PWR5036



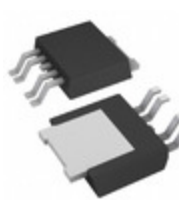
VN820PT

STMicroelectronics
IC PWR DRIVER N-CHANNEL 1:1 PPAK



VN820SPTR-E

STMicroelectronics
IC PWR DRIVER N-CHAN 1:1 PWR5010



VN820PT-E

STMicroelectronics
IC PWR DRIVER N-CHANNEL 1:1 PPAK



VN830E

STMicroelectronics

Shipment

Delivery Time

In-stock items can be shipped within 24 hours. Some parts will be arranged for delivery within 1-2 days from the date all items arrive at our warehouse. And Allelco ships order once a day at about 17:00, except Sunday. Once the goods are shipped, the estimated delivery time depends on the shipping methods and Delivery destination. The table below shows are the logistic time for some common countries.

Delivery Cost

- > Use your express account for shipment if you have one.
 - > Use our account for the shipment. Refer to the table below for the approximate charges.
- (Different time frame / countries / package size has different price.)

Delivery Method

- > Global Common Shipment by DHL / UPS / FedEx / TNT / EMS / SF we support.
- > Others more shipping ways, please get in touch with your customer manager.

Common Countries Logistic Time Reference

Region	Country	Logistic Time(Day)
America	United States	5
	Brazil	7
Europe	Germany	5
	United Kingdom	4
	Italy	5
Oceania	Australia	6
	New Zealand	7
Asia	India	6
	Japan	7
Middle East	Israel	6

DHL & FedEx Shipment Charges Reference

Shipment charges(KG)	Reference DHL(USD\$)
0.00kg-1.00kg	USD\$60.00
1.00kg-2.00kg	USD\$70.00
2.00kg-3.00kg	USD\$80.00

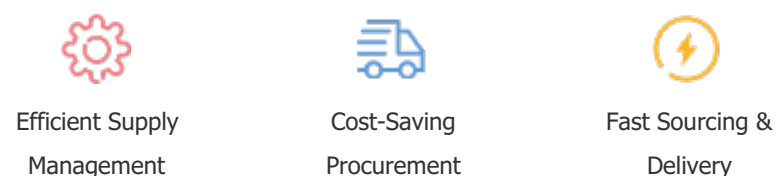
Note: The above table is for reference only. There may have some data bias for the uncontrollable factors. Contact us if you have any questions.

Payment Support

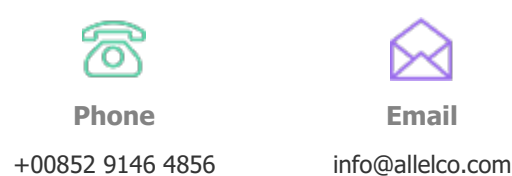
The payment method can be chosen from the methods shown below:
Wire Transfer (T/T, Bank Transfer), Western Union, Credit card, PayPal.



Your Faithful Supply Chain Partner -



Contact us if you have any questions.



Certifications & Memberships



View More