

Image may be representation.  
See specifications for product details.



## P6KE22CA

Manufacturer Part Number	<b>P6KE22CA</b>
Manufacturer	<b>Sangdest Microelectronics / Nanjing (SMC Diode Solutions)</b>
Allelco Part Number	32D-P6KE22CA
ECAD Model	Request Free CAD Models
Parts Description	TVS DIODE 18.8VWM 30.6VC DO15
Package	DO-204AC, DO-15, Axial
Data sheet	<b>P6KE Series.pdf</b>
RoHs Status	<b>ROHS3 Compliant</b>

**Get a Quote**

P6KE22CA - SMC Diode Solutions.New Original in Stock. Download Linear Technology P6KE22CA datasheet/specifications on AllelcoElec.com.  
Request a quote for P6KE22CA, please send us email: [info@allelco.com](mailto:info@allelco.com)

### Specifications

P6KE22CA Tech Specifications  
P6KE22CA - SMC Diode Solutions technical specifications, attributes, parameters

Product Attribute	Attribute Value	Product Attribute	Attribute Value
Manufacturer	Sangdest Microelectronics / Nanjing (SMC Diode Solutions)	Package / Case	DO-204AC, DO-15, Axial
Voltage - Reverse Standoff (Typ)	18.8V	Package	Tape & Box (TB)
Voltage - Clamping (Max) @ Ipp	30.6V	Operating Temperature	-65°C ~ 175°C (TJ)
Voltage - Breakdown (Min)	20.9V	Mounting Type	Through Hole
Type	Zener	Current - Peak Pulse (10/1000µs)	20A
Supplier Device Package	DO-15	Capacitance @ Frequency	-
Series	-	Bidirectional Channels	1
Power Line Protection	No	Base Product Number	P6KE22
Power - Peak Pulse	600W	Applications	General Purpose

### Parts with Similar Specifications

The three parts on the right have similar specifications to SMC Diode Solutions P6KE22CA

Product Attribute				
Part Number	P6KE22CA	<b>P6KE220CA-E3/73</b>	<b>P6KE22A</b>	<b>P6KE22CA</b>
Manufacturer	SMC Diode Solutions	Vishay General Semiconductor - Diodes Division	Diotec Semiconductor	Littelfuse Inc.
Series	-	TransZorb®	-	P6KE
Power Line Protection	No	No	No	No
Power - Peak Pulse	600W	600W	600W	600W
Type	Zener	Zener	Zener	Zener
Package / Case	DO-204AC, DO-15, Axial	DO-204AC, DO-15, Axial	DO-204AC, DO-15, Axial	DO-204AC, DO-15, Axial
Mounting Type	Through Hole	Through Hole	Through Hole	Through Hole
Capacitance @ Frequency	-	-	-	-
Package	Tape & Box (TB)	Tape & Box (TB)	Tape & Reel (TR)	Tape & Reel (TR)
Voltage - Reverse Standoff (Typ)	18.8V	185V	18.8V	18.8V
Bidirectional Channels	1	1	-	1
Base Product Number	P6KE22	P6KE220	-	-
Operating Temperature	-65°C ~ 175°C (TJ)	-55°C ~ 175°C (TJ)	-50°C ~ 175°C (TJ)	-55°C ~ 175°C (TJ)
Current - Peak Pulse (10/1000µs)	20A	1.8A	20A	19.9A
Applications	General Purpose	General Purpose	General Purpose	General Purpose
Voltage - Clamping (Max) @ Ipp	30.6V	328V	30.6V	30.6V
Voltage - Breakdown (Min)	20.9V	209V	20.9V	20.9V
Supplier Device Package	DO-15	DO-204AC (DO-15)	DO-15 (DO-204AC)	DO-204AC (DO-15)

### P6KE22CA Datasheet PDF

Download P6KE22CA pdf datasheets and SMC Diode Solutions documentation for P6KE22CA - SMC Diode Solutions.

### Environmental Information

[SMC Diodes REACH 205.pdf](#)

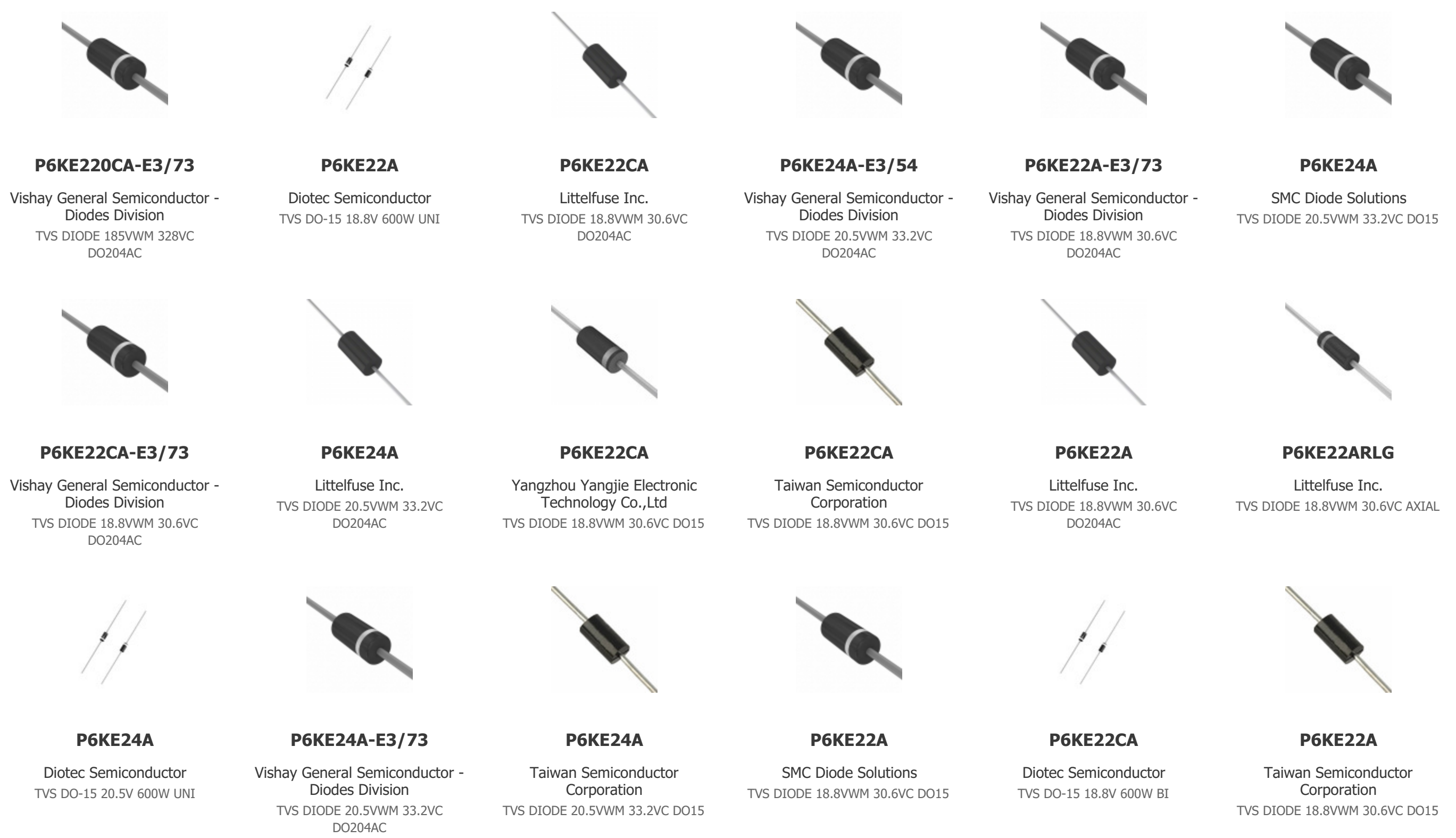
[SMC Diodes RoHS.pdf](#)

### HTML Datasheet

[P6KE Series.pdf](#)

### Customers Also Interested in

### Recommended Products



## Shipment

### Delivery Time

In-stock items can be shipped within 24 hours. Some parts will be arranged for delivery within 1-2 days from the date all items arrive at our warehouse. And Alleco ships order once a day at about 17:00, except Sunday. Once the goods are shipped, the estimated delivery time depends on the shipping methods and Delivery destination. The table below shows are the logistic time for some common countries.

### Delivery Cost

> Use your express account for shipment if you have one.

> Use our account for the shipment. Refer to the table below for the approximate charges.

(Different time frame / countries / package size has different price.)

### Delivery Method

> Global Common Shipment by DHL / UPS / FedEx / TNT / EMS / SF we support.

> Others more shipping ways, please get in touch with your customer manager.

Common Countries Logistic Time Reference		
Region	Country	Logistic Time(Day)
America	United States	5
	Brazil	7
Europe	Germany	5
	United Kingdom	4
	Italy	5
Oceania	Australia	6
	New Zealand	7
Asia	India	6
	Japan	7
Middle East	Israel	6

DHL & FedEx Shipment Charges Reference	
Shipment charges(KG)	Reference DHL(USD\$)
0.00kg-1.00kg	USD\$60.00
1.00kg-2.00kg	USD\$70.00
2.00kg-3.00kg	USD\$80.00

Note: The above table is for reference only. There may have some data bias for the uncontrollable factors.

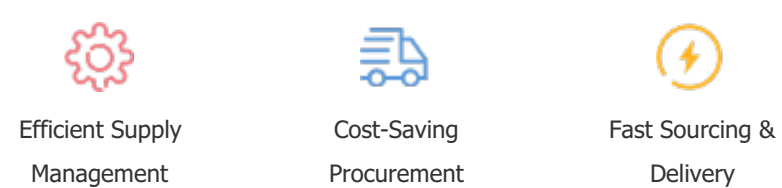
Contact us if you have any questions.

## Payment Support

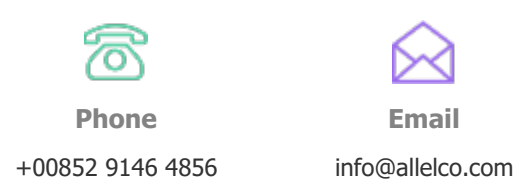
The payment method can be chosen from the methods shown below:  
Wire Transfer (T/T, Bank Transfer), Western Union, Credit card, PayPal.



## Your Faithful Supply Chain Partner -



Contact us if you have any questions.



## Certifications & Memberships



[View More](#)