



Image may be representation.
See specifications for product details.



AT45DB011B-SU

Manufacturer Part Number	AT45DB011B-SU
Manufacturer	Microchip Technology
Allelco Part Number	32D-AT45DB011B-SU
ECAD Model	PCB Symbol, Footprint & 3D Mode
Parts Description	IC FLASH 1MBIT SPI 20MHZ 8SOIC
Package	8-SOIC (0.209', 5.30mm Width)
Data sheet	AT45DB011B-SU.pdf
RoHs Status	ROHS3 Compliant

Get a Quote

AT45DB011B-SU - Microchip Technology.New Original in Stock. Download Linear Technology AT45DB011B-SU datasheet/specifications on AllelcoElec.com.
Request a quote for AT45DB011B-SU, please send us email: info@allelco.com

Specifications

AT45DB011B-SU Tech Specifications
AT45DB011B-SU - Microchip Technology technical specifications, attributes, parameters

Product Attribute	Attribute Value	Product Attribute	Attribute Value
Manufacturer	Microchip Technology	Mounting Type	Surface Mount
Write Cycle Time - Word, Page	15ms	Memory Type	Non-Volatile
Voltage - Supply	2.7V ~ 3.6V	Memory Size	1Mbit
Technology	FLASH	Memory Organization	264 Bytes x 512 pages
Supplier Device Package	8-SOIC	Memory Interface	SPI
Series	-	Memory Format	FLASH
Package / Case	8-SOIC (0.209', 5.30mm Width)	Clock Frequency	20 MHz
Package	Tube	Base Product Number	AT45DB011
Operating Temperature	-40°C ~ 85°C (TC)		

Parts with Similar Specifications

The three parts on the right have similar specifications to Microchip Technology AT45DB011B-SU

Product Attribute				
Part Number	AT45DB011B-SU	AT45DB011B-XC	AT45DB011B-SC	AT45DB011B-SI
Manufacturer	Microchip Technology	Microchip Technology	Microchip Technology	Microchip Technology
Package	Tube	Tube	Tube	Tube
Memory Organization	264 Bytes x 512 pages	264 Bytes x 512 pages	264 Bytes x 512 pages	264 Bytes x 512 pages
Technology	FLASH	FLASH	FLASH	FLASH
Voltage - Supply	2.7V ~ 3.6V	2.7V ~ 3.6V	2.7V ~ 3.6V	2.7V ~ 3.6V
Supplier Device Package	8-SOIC	14-TSSOP	8-SOIC	8-SOIC
Package / Case	8-SOIC (0.209', 5.30mm Width)	14-TSSOP (0.173', 4.40mm Width)	8-SOIC (0.209', 5.30mm Width)	8-SOIC (0.209', 5.30mm Width)
Memory Interface	SPI	SPI	SPI	SPI
Memory Type	Non-Volatile	Non-Volatile	Non-Volatile	Non-Volatile
Base Product Number	AT45DB011	AT45DB011	AT45DB011	AT45DB011
Write Cycle Time - Word, Page	15ms	15ms	15ms	15ms
Memory Format	FLASH	FLASH	FLASH	FLASH
Mounting Type	Surface Mount	Surface Mount	Surface Mount	Surface Mount
Clock Frequency	20 MHz	20 MHz	20 MHz	20 MHz
Memory Size	1Mbit	1Mbit	1Mbit	1Mbit
Series	-	-	-	-
Operating Temperature	-40°C ~ 85°C (TC)	0°C ~ 70°C (TC)	0°C ~ 70°C (TC)	-40°C ~ 85°C (TC)

AT45DB011B-SU Datasheet PDF

Download AT45DB011B-SU pdf datasheets and Microchip Technology documentation for AT45DB011B-SU - Microchip Technology.

PCN Packaging

[Transfer to Microchip/Label/Pkg 5/Sep/2016.pdf](#)

Customers Also Interested in

Recommended Products



AT45DB011B-XC
Microchip Technology
IC FLASH 1MBIT SPI 20MHZ 14TSSOP



AT45DB011B-SC
Microchip Technology
IC FLASH 1MBIT SPI 20MHZ 8SOIC



AT45DB011B-SI
Microchip Technology
IC FLASH 1MBIT SPI 20MHZ 8SOIC



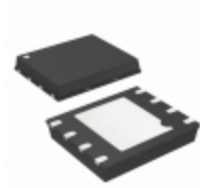
AT45DB011B-SC
Microchip Technology
IC FLASH 1MBIT SPI 15MHZ 8SOIC



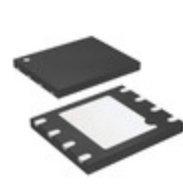
AT45DB011B-XU
Microchip Technology
IC FLASH 1MBIT SPI 20MHZ 14TSSOP



AT45DB011B-CI
Microchip Technology
IC FLASH 1MBIT SPI 20MHZ 9CBGA

**AT45DB011D-SH**

Atmel (Microchip Technology)

**AT45DB011D-MH-SL954**Adesto Technologies
IC FLASH 1MBIT SPI 66MHZ 8UDFN**AT45DB011B**

Atmel (Microchip Technology)

**AT45DB011B-SJ**

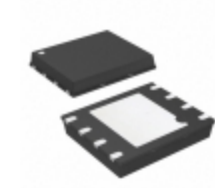
Atmel (Microchip Technology)

AT45DB011-SIMicrochip Technology
IC FLASH 1MBIT SPI 15MHZ 8SOIC**AT45DB011-JC**Microchip Technology
IC FLASH 1MBIT SPI 15MHZ 32PLCC**AT45DB011B-KOREA-A**

Atmel (Microchip Technologies)

**AT45DB011-XC**Microchip Technology
IC FLASH 1MBIT SPI 15MHZ
14TSSOP**AT45DB011D-MH**

Atmel (Microchip Technology)

**AT45DB011D-MH-T**Adesto Technologies
IC FLASH 1MBIT SPI 66MHZ 8UDFN**AT45DB011B-XI**Microchip Technology
IC FLASH 1MBIT SPI 20MHZ
14TSSOP

Shipment

Delivery Time

In-stock items can be shipped within 24 hours. Some parts will be arranged for delivery within 1-2 days from the date all items arrive at our warehouse. And Allelco ships order once a day at about 17:00, except Sunday. Once the goods are shipped, the estimated delivery time depends on the shipping methods and Delivery destination. The table below shows are the logistic time for some common countries.

Delivery Cost

> Use your express account for shipment if you have one.

> Use our account for the shipment. Refer to the table below for the approximate charges.

(Different time frame / countries / package size has different price.)

Delivery Method

> Global Common Shipment by DHL / UPS / FedEx / TNT / EMS / SF we support.

> Others more shipping ways, please get in touch with your customer manager.

Common Countries Logistic Time Reference

Region	Country	Logistic Time(Day)
America	United States	5
	Brazil	7
Europe	Germany	5
	United Kingdom	4
	Italy	5
Oceania	Australia	6
	New Zealand	7
Asia	India	6
	Japan	7
Middle East	Israel	6

DHL & FedEx Shipment Charges Reference

Shipment charges(KG)	Reference DHL(USD\$)
0.00kg-1.00kg	USD\$60.00
1.00kg-2.00kg	USD\$70.00
2.00kg-3.00kg	USD\$80.00

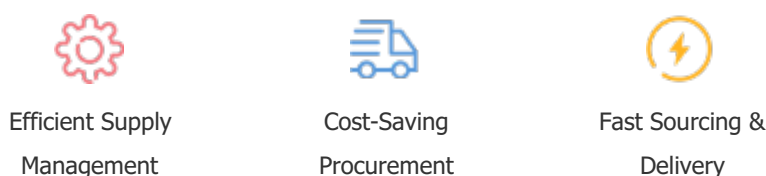
Note: The above table is for reference only. There may have some data bias for the uncontrollable factors.
Contact us if you have any questions.

Payment Support

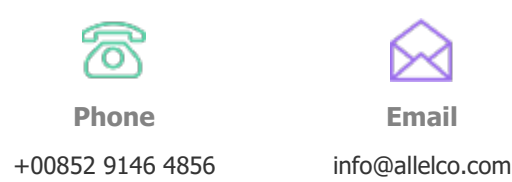
The payment method can be chosen from the methods shown below:
Wire Transfer (T/T, Bank Transfer), Western Union, Credit card,
PayPal.



Your Faithful Supply Chain Partner -



Contact us if you have any questions.



Certifications & Memberships



[View More](#)



Contact us

Address: Flat/Rm C 13/F Harvard Commercial Building 105-111 Thomson Road, Wan Chai, Hong Kong
Phone: +00852 9146 4856
Fax: +00852 3010 8510
Email: info@Allelco.com

Copyright © 2012-2023 AllelcoElec.com. All rights reserved.