

Image may be representation.  
See specifications for product details.



## MCP632T-E/MF

|                          |   |
|--------------------------|---|
| Manufacturer Part Number | <b>MCP632T-E/MF</b>                           |
| Manufacturer             | <b>Microchip Technology</b>                   |
| Allelco Part Number      | 32D-MCP632T-E/MF                              |
| ECAD Model               | Request Free CAD Models                       |
| Parts Description        | IC CMOS 2 CIRCUIT 8DFN                        |
| Package                  | 8-VDFN Exposed Pad                            |
| Data sheet               | <b>Analog and Interface Product Guide.pdf</b> |
| RoHs Status              | <b>ROHS3 Compliant</b>                        |

**Get a Quote**

MCP632T-E/MF - Microchip Technology. New Original in Stock. Download Linear Technology MCP632T-E/MF datasheet/specifications on AllelcoElec.com.  
Request a quote for MCP632T-E/MF, please send us email: [info@allelco.com](mailto:info@allelco.com)

### Specifications

MCP632T-E/MF Tech Specifications

MCP632T-E/MF - Microchip Technology technical specifications, attributes, parameters

| Product Attribute           | Attribute Value      | Product Attribute          | Attribute Value     |
|-----------------------------|----------------------|----------------------------|---------------------|
| Manufacturer                | Microchip Technology | Operating Temperature      | -40°C ~ 125°C (TA)  |
| Voltage - Supply Span (Min) | 2.5 V                | Number of Circuits         | 2                   |
| Voltage - Supply Span (Max) | 5.5 V                | Mounting Type              | Surface Mount       |
| Voltage - Input Offset      | 1.8 mV               | Gain Bandwidth Product     | 24 MHz              |
| Supplier Device Package     | 8-DFN (3x3)          | Current - Supply           | 2.5mA (x2 Channels) |
| Slew Rate                   | 10V/μs               | Current - Output / Channel | 85 mA               |
| Series                      | -                    | Current - Input Bias       | 4 pA                |
| Package / Case              | 8-VDFN Exposed Pad   | Base Product Number        | MCP632              |
| Package                     | Tape & Reel (TR)     | Amplifier Type             | CMOS                |
| Output Type                 | Rail-to-Rail         |                            |                     |

### Parts with Similar Specifications

The three parts on the right have similar specifications to Microchip Technology MCP632T-E/MF

| Product Attribute           |                      |                      |                           |                               |
|-----------------------------|----------------------|----------------------|---------------------------|-------------------------------|
| Part Number                 | MCP632T-E/MF         | MCP632-E/MF          | MCP6401T-E/LT             | MCP6402T-E/SN                 |
| Manufacturer                | Microchip Technology | Microchip Technology | Microchip Technology      | Microchip Technology          |
| Voltage - Input Offset      | 1.8 mV               | 1.8 mV               | 4.5 mV                    | 800 μV                        |
| Current - Supply            | 2.5mA (x2 Channels)  | 2.5mA (x2 Channels)  | 45μA                      | 45μA (x2 Channels)            |
| Current - Output / Channel  | 85 mA                | 85 mA                | -                         | 15 mA                         |
| Slew Rate                   | 10V/μs               | 10V/μs               | 0.5V/μs                   | 0.5V/μs                       |
| Amplifier Type              | CMOS                 | CMOS                 | General Purpose           | General Purpose               |
| Gain Bandwidth Product      | 24 MHz               | 24 MHz               | 1 MHz                     | 1 MHz                         |
| Operating Temperature       | -40°C ~ 125°C (TA)   | -40°C ~ 125°C (TA)   | -40°C ~ 125°C             | -40°C ~ 125°C (TA)            |
| Voltage - Supply Span (Min) | 2.5 V                | 2.5 V                | 1.8 V                     | 1.8 V                         |
| Current - Input Bias        | 4 pA                 | 4 pA                 | 1 pA                      | 1 pA                          |
| Voltage - Supply Span (Max) | 5.5 V                | 5.5 V                | 6 V                       | 6 V                           |
| Mounting Type               | Surface Mount        | Surface Mount        | Surface Mount             | Surface Mount                 |
| Number of Circuits          | 2                    | 2                    | 1                         | 2                             |
| Base Product Number         | MCP632               | MCP632               | MCP6401                   | MCP6402                       |
| Series                      | -                    | -                    | -                         | -                             |
| Package                     | Tape & Reel (TR)     | Tube                 | Tape & Reel (TR)          | Tape & Reel (TR)              |
| Supplier Device Package     | 8-DFN (3x3)          | 8-DFN (3x3)          | SC-70-5                   | 8-SOIC                        |
| Output Type                 | Rail-to-Rail         | Rail-to-Rail         | Rail-to-Rail              | Rail-to-Rail                  |
| Package / Case              | 8-VDFN Exposed Pad   | 8-VDFN Exposed Pad   | 5-TSSOP, SC-70-5, SOT-353 | 8-SOIC (0.154", 3.90mm Width) |

### MCP632T-E/MF Datasheet PDF

Download MCP632T-E/MF pdf datasheets and Microchip Technology documentation for MCP632T-E/MF - Microchip Technology.

#### Datasheets

[Analog and Interface Product Guide.pdf](#)

#### PCN Packaging

[Label and Packing Changes 23/Sep/2015.pdf](#)


[Packing Changes 10/Oct/2016.pdf](#)

#### Environmental Information

[Microchip CA Prop65.pdf](#)

[Microchip REACH.pdf](#)

[Microchip RoHS.pdf](#)

 Manufacturing Change 29/Jul/2021.pdf

## Customers Also Interested in

### Recommended Products



**MCP632-E/MF**

Microchip Technology  
IC CMOS 2 CIRCUIT 8DFN



**MCP6401T-E/LT**

Microchip Technology  
IC OPAMP GP 1 CIRCUIT SC70-5



**MCP6402T-E/SN**

Microchip Technology  
IC OPAMP GP 2 CIRCUIT 8SOIC



**MCP6401T-E/OT**

Microchip Technology  
IC OPAMP GP 1 CIRCUIT SOT23-5



**MCP633-E/SN**

Microchip Technology  
IC OPAMP GP 1 CIRCUIT 8SOIC



**MCP6401RT-E/OT**

Microchip Technology  
IC OPAMP GP 1 CIRCUIT SOT23-5



**MCP6295-E/SN**

Microchip Technology  
IC OPAMP GP 2 CIRCUIT 8SOIC



**MCP6294T-E/ST**

Microchip Technology  
IC OPAMP GP 4 CIRCUIT 14TSSOP



**MCP6294-E/ST**

Microchip Technology  
IC OPAMP GP 4 CIRCUIT 14TSSOP



**MCP6401UT-E/OT**

Microchip Technology  
IC OPAMP GP 1 CIRCUIT SOT23-5



**MCP632T-E/SN**

Microchip Technology  
IC CMOS 2 CIRCUIT 8SOIC



**MCP6294IDR**

Texas Instruments  
IC OPAMP GP 4 CIRCUIT 14SSOIC



**MCP631T-E/OT**

Microchip Technology  
IC OPAMP GP 1 CIRCUIT SOT23-5



**MCP6294T-E/SL**

Microchip Technology  
IC OPAMP GP 4 CIRCUIT 14SSOIC



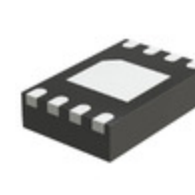
**MCP6402-H/SN**

Microchip Technology  
IC OPAMP GP 2 CIRCUIT 8SOIC



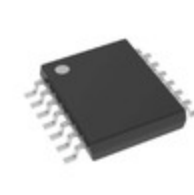
**MCP632-E/SN**

Microchip Technology  
IC CMOS 2 CIRCUIT 8SOIC



**MCP6402T-E/MNY**

Microchip Technology  
IC OPAMP GP 2 CIRCUIT 8TDFN



**MCP6294IPWR**

Texas Instruments  
IC OPAMP GP 4 CIRCUIT 14TSSOP

## Shipment

### Delivery Time

In-stock items can be shipped within 24 hours. Some parts will be arranged for delivery within 1-2 days from the date all items arrive at our warehouse. And Allelco ships order once a day at about 17:00, except Sunday. Once the goods are shipped, the estimated delivery time depends on the shipping methods and Delivery destination. The table below shows are the logistic time for some common countries.

### Delivery Cost

- > Use your express account for shipment if you have one.
  - > Use our account for the shipment. Refer to the table below for the approximate charges.
- (Different time frame / countries / package size has different price.)

### Delivery Method

- > Global Common Shipment by DHL / UPS / FedEx / TNT / EMS / SF we support.
- > Others more shipping ways, please get in touch with your customer manager.

Common Countries Logistic Time Reference

| Region      | Country        | Logistic Time(Day) |
|-------------|----------------|--------------------|
| America     | United States  | 5                  |
|             | Brazil         | 7                  |
| Europe      | Germany        | 5                  |
|             | United Kingdom | 4                  |
|             | Italy          | 5                  |
| Oceania     | Australia      | 6                  |
|             | New Zealand    | 7                  |
| Asia        | India          | 6                  |
|             | Japan          | 7                  |
| Middle East | Israel         | 6                  |

DHL & FedEx Shipment Charges Reference

| Shipment charges(KG) | Reference DHL(USD\$) |
|----------------------|----------------------|
| 0.00kg-1.00kg        | USD\$60.00           |
| 1.00kg-2.00kg        | USD\$70.00           |
| 2.00kg-3.00kg        | USD\$80.00           |




**Note:** The above table is for reference only. There may have some data bias for the uncontrollable factors. Contact us if you have any questions.

### Payment Support



The payment method can be chosen from the methods shown below:  
Wire Transfer (T/T, Bank Transfer), Western Union, Credit card, PayPal.



### Your Faithful Supply Chain Partner -

-  Efficient Supply Management
-  Cost-Saving Procurement
-  Fast Sourcing & Delivery

Contact us if you have any questions.

-  Phone  
+00852 9146 4856
-  Email  
info@allelco.com

### Certifications & Memberships



[View More](#)

### Contact us

Address: Flat/Rm C 13/F Harvard Commercial Building 105-111 Thomson Road, Wan Chai, Hong Kong  
Phone: +00852 9146 4856  
Fax: +00852 3010 8510  
Email: info@allelco.com