

Image may be representation.
See specifications for product details.



XC7A75T-3FGG676E

Manufacturer Part Number	XC7A75T-3FGG676E
Manufacturer	AMD Xilinx
Allelco Part Number	32D-XC7A75T-3FGG676E
ECAD Model	Request Free CAD Models
Parts Description	IC FPGA 300 I/O 676FBGA
Package	676-BGA
Data sheet	Artix-7 FPGAs Brief.pdf
RoHs Status	ROHS3 Compliant

Get a Quote

XC7A75T-3FGG676E - AMD.New Original in Stock. Download Linear Technology XC7A75T-3FGG676E datasheet/specifications on AllelcoElec.com.
Request a quote for XC7A75T-3FGG676E, please send us email: info@allelco.com

Specifications

XC7A75T-3FGG676E Tech Specifications
XC7A75T-3FGG676E - AMD technical specifications, attributes, parameters

Product Attribute	Attribute Value	Product Attribute	Attribute Value
Manufacturer	AMD Xilinx	Operating Temperature	0°C ~ 100°C (TJ)
Voltage - Supply	0.95V ~ 1.05V	Number of Logic Elements/Cells	75520
Total RAM Bits	3870720	Number of LABs/CLBs	5900
Supplier Device Package	676-FBGA (27x27)	Number of I/O	300
Series	Artix-7	Mounting Type	Surface Mount
Package / Case	676-BGA	Base Product Number	XC7A75
Package	Tray		

Parts with Similar Specifications

The three parts on the right have similar specifications to AMD XC7A75T-3FGG676E

Product Attribute				
Part Number	XC7A75T-3FGG676E	XC7A75T-L1FGG484I	XC7A75T-2FGG484C	XC7K160T-1FBG484I
Manufacturer	AMD	Xilinx	AMD	AMD
Mounting Type	Surface Mount	Surface Mount	Surface Mount	Surface Mount
Base Product Number	XC7A75	-	XC7A75	XC7K160
Package	Tray	-	Tray	Tray
Package / Case	676-BGA	484-BBGA	484-BBGA	484-BBGA, FCBGA
Number of Logic Elements/Cells	75520	75520	75520	162240
Series	Artix-7	Artix-7	Artix-7	Kintex®-7
Number of I/O	300	250	285	285
Supplier Device Package	676-FBGA (27x27)	484-FBGA (23x23)	484-FBGA (23x23)	484-FCBGA (23x23)
Operating Temperature	0°C ~ 100°C (TJ)	-40°C ~ 100°C (TJ)	0°C ~ 85°C (TJ)	-40°C ~ 100°C (TJ)
Voltage - Supply	0.95V ~ 1.05V	0.95 V ~ 1.05 V	0.95V ~ 1.05V	0.97V ~ 1.03V
Total RAM Bits	3870720	3870720	3870720	11980800
Number of LABs/CLBs	5900	5900	5900	12675

XC7A75T-3FGG676E Datasheet PDF

Download XC7A75T-3FGG676E pdf datasheets and AMD documentation for XC7A75T-3FGG676E - AMD.

Datasheets

[Artix-7 FPGAs Brief.pdf](#)

Environmental Information

[Xilinx REACH211 Cert.pdf](#)

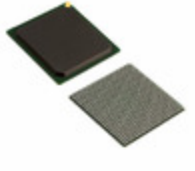
Customers Also Interested in

Recommended Products

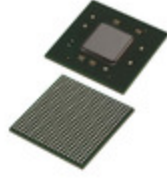
XC7A75T-L1FGG484I	XC7A75T-2FGG484C	XC7K160T-1FBG484I	XC7A75T-2CSG324I	XC7A75T-2FGG484I	XC7A75T-3FGG484E
Xilinx IC FPGA 250 I/O 484FCBGA	AMD IC FPGA 285 I/O 484FBGA	AMD IC FPGA 285 I/O 484FCBGA	AMD IC FPGA 210 I/O 324CSBGA	AMD IC FPGA 285 I/O 484FBGA	AMD IC FPGA 285 I/O 484FBGA

--	--	--	--	--	--

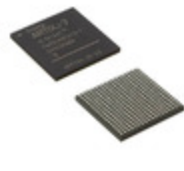
XC7A75T-3CSG324E
AMD
IC FPGA 210 I/O 324CSBGA



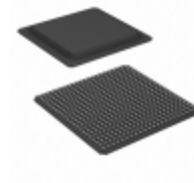
XC7A75T-1FGG676I
AMD
IC FPGA 300 I/O 676FBGA



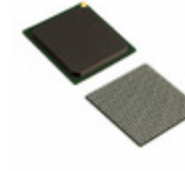
XC7A75T-3CSG324I
AMD Xilinx



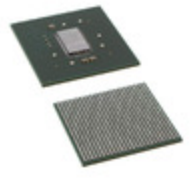
XC7K160T-1FBG676I
AMD
IC FPGA 400 I/O 676FCBGA



XC7K160T-1FBG676C
AMD
IC FPGA 400 I/O 676FCBGA



XC7A75T-2CSG324C
AMD
IC FPGA 210 I/O 324CSBGA



XC7A75T-2FGG676I
AMD
IC FPGA 300 I/O 676FBGA

XC7K160T-1FBG484C
AMD
IC FPGA 285 I/O 484FCBGA

XC7A75T-L2CSG324E
AMD
IC FPGA 210 I/O 324CSBGA

XC7A75T-L2FGG484E
AMD
IC FPGA 285 I/O 484FBGA

XC7A75T-2FGG676C
AMD
IC FPGA 300 I/O 676FBGA

XC7K160T-1FB676I
AMD
IC FPGA 400 I/O 676FCBGA

Shipment

Delivery Time

In-stock items can be shipped within 24 hours. Some parts will be arranged for delivery within 1-2 days from the date all items arrive at our warehouse. And Allelco ships order once a day at about 17:00, except Sunday. Once the goods are shipped, the estimated delivery time depends on the shipping methods and Delivery destination. The table below shows are the logistic time for some common countries.

Delivery Cost

> Use your express account for shipment if you have one.

> Use our account for the shipment. Refer to the table below for the approximate charges.

(Different time frame / countries / package size has different price.)

Delivery Method

> Global Common Shipment by DHL / UPS / FedEx / TNT / EMS / SF we support.

> Others more shipping ways, please get in touch with your customer manager.

Common Countries Logistic Time Reference		
Region	Country	Logistic Time(Day)
America	United States	5
	Brazil	7
Europe	Germany	5
	United Kingdom	4
	Italy	5
Oceania	Australia	6
	New Zealand	7
Asia	India	6
	Japan	7
Middle East	Israel	6

DHL & FedEx Shipment Charges Reference	
Shipment charges(KG)	Reference DHL(USD\$)
0.00kg-1.00kg	USD\$60.00
1.00kg-2.00kg	USD\$70.00
2.00kg-3.00kg	USD\$80.00

Note: The above table is for reference only. There may have some data bias for the uncontrollable factors.

Contact us if you have any questions.

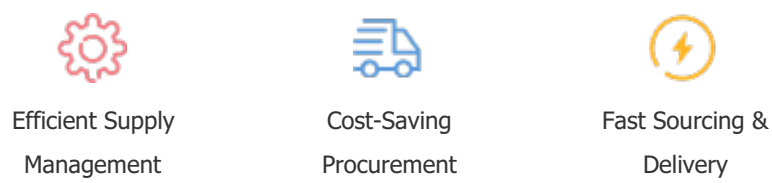
Payment Support

The payment method can be chosen from the methods shown below:

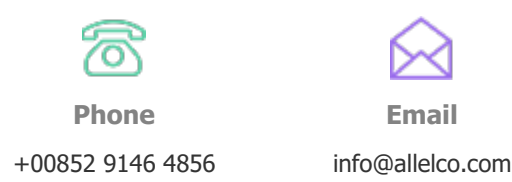
Wire Transfer (T/T, Bank Transfer), Western Union, Credit card, PayPal.



Your Faithful Supply Chain Partner -



Contact us if you have any questions.



Certifications & Memberships



[View More](#)



Contact us

Address: Flat/Rm C 13/F Harvard Commercial Building 105-111 Thomson Road, Wan Chai, Hong Kong

Phone: +00852 9146 4856

Fax: +00852 3010 8510

Email: info@Allelco.com

Copyright © 2012-2023 AllelcoElec.com. All rights reserved.