

Image may be representation.
See specifications for product details.



S2D-E3/52T

Manufacturer Part Number	S2D-E3/52T
Manufacturer	Vishay General Semiconductor – Diodes Division
Allelco Part Number	32D-S2D-E3/52T
ECAD Model	Request Free CAD Models
Parts Description	DIODE GEN PURP 200V 1.5A DO214AA
Package	DO-214AA, SMB
Data sheet	S2A thru S2M.pdf
RoHs Status	ROHS3 Compliant

[Get a Quote](#)

S2D-E3/52T - Vishay General Semiconductor - Diodes Division. New Original in Stock. Download Linear Technology S2D-E3/52T datasheet/specifications on AllelcoElec.com.
Request a quote for S2D-E3/52T, please send us email: info@allelco.com

Specifications

S2D-E3/52T Tech Specifications
S2D-E3/52T - Vishay General Semiconductor - Diodes Division technical specifications, attributes, parameters

Product Attribute	Attribute Value	Product Attribute	Attribute Value
Manufacturer	Vishay General Semiconductor – Diodes Division	Package / Case	DO-214AA, SMB
Voltage - Forward (Vf) (Max) @ If	1.15 V @ 1.5 A	Package	Tape & Reel (TR)
Voltage - DC Reverse (Vr) (Max)	200 V	Operating Temperature - Junction	-55°C ~ 150°C
Technology	Standard	Mounting Type	Surface Mount
Supplier Device Package	DO-214AA (SMB)	Current - Reverse Leakage @ Vr	1 µA @ 200 V
Speed	Standard Recovery >500ns, > 200mA (Io)	Current - Average Rectified (Io)	1.5A
Series	-	Capacitance @ Vr, F	16pF @ 4V, 1MHz
Reverse Recovery Time (trr)	2 µs	Base Product Number	S2D

Parts with Similar Specifications

The three parts on the right have similar specifications to Vishay General Semiconductor - Diodes Division S2D-E3/52T

Product Attribute				
Part Number	S2D-E3/52T	1N1344AR	S2DA-13-F	S2D-13-F
Manufacturer	Vishay General Semiconductor - Diodes Division	Microchip Technology	Diodes Incorporated	Diodes Incorporated
Package	Tape & Reel (TR)	Bulk	Tape & Reel (TR)	Tape & Reel (TR)
Voltage - Forward (Vf) (Max) @ If	1.15 V @ 1.5 A	1.3 V @ 30 A	1.15 V @ 1.5 A	1.15 V @ 1.5 A
Series	-	-	-	-
Technology	Standard	Standard	Standard	Standard
Current - Reverse Leakage @ Vr	1 µA @ 200 V	10 µA @ 200 V	5 µA @ 200 V	5 µA @ 200 V
Capacitance @ Vr, F	16pF @ 4V, 1MHz	-	20pF @ 4V, 1MHz	20pF @ 4V, 1MHz
Base Product Number	S2D	-	S2D	S2D
Speed	Standard Recovery >500ns, > 200mA (Io)	Standard Recovery >500ns, > 200mA (Io)	Standard Recovery >500ns, > 200mA (Io)	Standard Recovery >500ns, > 200mA (Io)
Mounting Type	Surface Mount	Stud Mount	Surface Mount	Surface Mount
Package / Case	DO-214AA, SMB	DO-203AA, DO-4, Stud	DO-214AC, SMA	DO-214AA, SMB
Operating Temperature - Junction	-55°C ~ 150°C	-65°C ~ 200°C	-65°C ~ 150°C	-65°C ~ 150°C
Voltage - DC Reverse (Vr) (Max)	200 V	200 V	200 V	200 V
Current - Average Rectified (Io)	1.5A	16A	1.5A	1.5A
Reverse Recovery Time (trr)	2 µs	-	-	-
Supplier Device Package	DO-214AA (SMB)	DO-4 (DO-203AA)	SMA	SMB

S2D-E3/52T Datasheet PDF

Download S2D-E3/52T pdf datasheets and Vishay General Semiconductor - Diodes Division documentation for S2D-E3/52T - Vishay General Semiconductor - Diodes Division.

Datasheets

[S2A thru S2M.pdf](#)

PCN Assembly/Origin

[Multiple Parts 21/Jun/2022.pdf](#)

Customers Also Interested in

Recommended Products



S2DOS04X01-J230
Samsung Semiconductor

S2D-E3/52
JXND

S2D13513F01A100
Epson Electronics America Inc-
Semiconductor Div

S2DOS04A01-J030
Samsung Semiconductor

S2DNE60
STMicroelectronics

S2D13746F01A6
Epson



S2D0S01B01-J030

Samsung Semiconductor

1N1344AR

Microchip Technology
DIODE GEN PURP 200V 16A DO4

S2D13P04F00A100

Epson Electronics America Inc-
Semiconductor Div
IC VIDEO GRAPHIC CNTL 100QFP15

S2D1616A

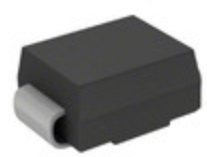
CJ

S2D-E3/61T

Electro-Films (EFI) / Vishay

S2D13A05F00A1

Epson



S2DA-13-F

Diodes Incorporated
DIODE GEN PURP 200V 1.5A SMA



S2DHE3

Electro-Films (EFI) / Vishay



S2DHE3/61T

Electro-Films (EFI) / Vishay



S2D-13-F

Diodes Incorporated
DIODE GEN PURP 200V 1.5A SMB



PMEG3010BEA

Nexperia USA Inc.
NOW NEXPERIA PMEG3010BEA -
RECTI



S2DA R3

Taiwan Semiconductor

Shipment

Delivery Time

In-stock items can be shipped within 24 hours. Some parts will be arranged for delivery within 1-2 days from the date all items arrive at our warehouse. And Allelco ships order once a day at about 17:00, except Sunday. Once the goods are shipped, the estimated delivery time depends on the shipping methods and Delivery destination. The table below shows are the logistic time for some common countries.

Delivery Cost

> Use your express account for shipment if you have one.

> Use our account for the shipment. Refer to the table below for the approximate charges.

(Different time frame / countries / package size has different price.)

Delivery Method

> Global Common Shipment by DHL / UPS / FedEx / TNT / EMS / SF we support.

> Others more shipping ways, please get in touch with your customer manager.

Common Countries Logistic Time Reference

Region	Country	Logistic Time(Day)
America	United States	5
	Brazil	7
Europe	Germany	5
	United Kingdom	4
	Italy	5
Oceania	Australia	6
	New Zealand	7
Asia	India	6
	Japan	7
Middle East	Israel	6

DHL & FedEx Shipment Charges Reference

Shipment charges(KG)	Reference DHL(USD\$)
0.00kg-1.00kg	USD\$60.00
1.00kg-2.00kg	USD\$70.00
2.00kg-3.00kg	USD\$80.00

Note: The above table is for reference only. There may have some data bias for the uncontrollable factors.

Contact us if you have any questions.

Payment Support

The payment method can be chosen from the methods shown below:

Wire Transfer (T/T, Bank Transfer), Western Union, Credit card,
PayPal.



Your Faithful Supply Chain Partner -



Efficient Supply
Management



Cost-Saving
Procurement



Fast Sourcing &
Delivery

Contact us if you have any questions.



Phone

+00852 9146 4856



Email

info@allelco.com

Certifications & Memberships



View More



Contact us

Address: Flat/Rm C 13/F Harvard Commercial Building 105-111 Thomson Road, Wan Chai, Hong Kong

Phone: +00852 9146 4856

Fax: +00852 3010 8510

Email: info@Allelco.com