



Image may be representation.
See specifications for product details.



EPM3256AQC208-7

Manufacturer Part Number	EPM3256AQC208-7
Manufacturer	Intel
Allelco Part Number	32D-EPM3256AQC208-7
ECAD Model	Request Free CAD Models
Parts Description	IC CPLD 256MC 7.5NS 208QFP
Package	208-BFQFP
Data sheet	MAX 3000A Device Family Data Sheet.pdf

[Get a Quote](#)

EPM3256AQC208-7 - Intel.New Original in Stock. Download Linear Technology EPM3256AQC208-7 datasheet/specifications on AllelcoElec.com.
Request a quote for EPM3256AQC208-7, please send us email: info@allelco.com

Specifications

EPM3256AQC208-7 Tech Specifications
EPM3256AQC208-7 - Intel technical specifications, attributes, parameters

Product Attribute	Attribute Value	Product Attribute	Attribute Value
Manufacturer	Intel	Number of Macrocells	256
Voltage Supply - Internal	3V ~ 3.6V	Number of Logic Elements/Blocks	16
Supplier Device Package	208-PQFP (28x28)	Number of I/O	158
Series	MAX® 3000A	Number of Gates	5000
Programmable Type	In System Programmable	Mounting Type	Surface Mount
Package / Case	208-BFQFP	Delay Time tpd(1) Max	7.5 ns
Package	Tray	Base Product Number	EPM3256
Operating Temperature	0°C ~ 70°C (TA)		

Parts with Similar Specifications

The three parts on the right have similar specifications to Intel EPM3256AQC208-7

Product Attribute				
Part Number	EPM3256AQC208-7	EPM3256ATC144-7	EPM3256ATC144-10	EPM3256AQI208-10
Manufacturer	Intel	Intel	Intel	Intel
Voltage Supply - Internal	3V ~ 3.6V	3V ~ 3.6V	3V ~ 3.6V	3V ~ 3.6V
Number of Logic Elements/Blocks	16	16	16	16
Package / Case	208-BFQFP	144-LQFP	144-LQFP	208-BFQFP
Number of I/O	158	116	116	158
Mounting Type	Surface Mount	Surface Mount	Surface Mount	Surface Mount
Supplier Device Package	208-PQFP (28x28)	144-TQFP (20x20)	144-TQFP (20x20)	208-PQFP (28x28)
Series	MAX® 3000A	MAX® 3000A	MAX® 3000A	MAX® 3000A
Number of Gates	5000	5000	5000	5000
Delay Time tpd(1) Max	7.5 ns	7.5 ns	10 ns	10 ns
Programmable Type	In System Programmable	In System Programmable	In System Programmable	In System Programmable
Operating Temperature	0°C ~ 70°C (TA)	0°C ~ 70°C (TA)	0°C ~ 70°C (TA)	-40°C ~ 85°C (TA)
Package	Tray	Tray	Tray	Tray
Base Product Number	EPM3256	EPM3256	EPM3256	EPM3256
Number of Macrocells	256	256	256	256

EPM3256AQC208-7 Datasheet PDF

Download EPM3256AQC208-7 pdf datasheets and Intel documentation for EPM3256AQC208-7 - Intel.

Datasheets

[MAX 3000A Device Family Data Sheet.pdf](#)

PCN Packaging

[All Dev Pkg Chg 1/Aug/2018.pdf](#)

[Mult Dev Dessicant Chg 19/Jul/2019.pdf](#)

PCN Other

[Software Disc 06/Nov/2020.pdf](#)

PCN Design/Specification

[Cylindrical Battery Holders.pdf](#)

Errata

[MAX7000AE\(B\)/3000A Errata.pdf](#)

 Cylindrical Battery Holders.pdf

Customers Also Interested in

Recommended Products



EPM3256ATC144-7
Intel
IC CPLD 256MC 7.5NS 144TQFP



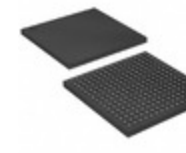
EPM3256ATC144-10
Intel
IC CPLD 256MC 10NS 144TQFP



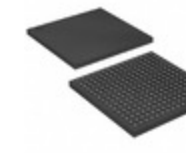
EPM3256AQI208-10
Intel
IC CPLD 256MC 10NS 208QFP



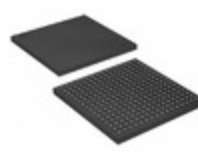
EPM3256AQC208-10N
Intel
IC CPLD 256MC 10NS 208QFP



EPM3256AFC256-7
Intel
IC CPLD 256MC 7.5NS 256FBGA



EPM3256AFC256-10
Intel
IC CPLD 256MC 10NS 256FBGA



EPM3256AFI256-10
Intel
IC CPLD 256MC 10NS 256FBGA



EPM3256AQI208-10N
Intel
IC CPLD 256MC 10NS 208QFP



EPM3256ATC144
Altera (Intel)



EPM3256ATC144-10N
Intel
IC CPLD 256MC 10NS 144TQFP



EPM3256AQC208-7N
Intel
IC CPLD 256MC 7.5NS 208QFP



EPM3256ATC144-10N.
Altera (Intel)



EPM3256AETC144-10
Altera (Intel)



EPM3256ATC144-3
Altera (Intel)



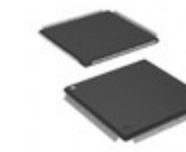
EPM3256AQC208-10
Intel
IC CPLD 256MC 10NS 208QFP



EPM3256AFI256-10N
Altera (Intel)



EPM3256ACT144-7
Altera (Intel)



EPM3128ATI144-10N
Intel
IC CPLD 128MC 10NS 144TQFP

Shipment

Delivery Time

In-stock items can be shipped within 24 hours. Some parts will be arranged for delivery within 1-2 days from the date all items arrive at our warehouse. And Allelco ships order once a day at about 17:00, except Sunday. Once the goods are shipped, the estimated delivery time depends on the shipping methods and Delivery destination. The table below shows are the logistic time for some common countries.

Delivery Cost

- > Use your express account for shipment if you have one.
 - > Use our account for the shipment. Refer to the table below for the approximate charges.
- (Different time frame / countries / package size has different price.)

Delivery Method

- > Global Common Shipment by DHL / UPS / FedEx / TNT / EMS / SF we support.
- > Others more shipping ways, please get in touch with your customer manager.

Common Countries Logistic Time Reference		
Region	Country	Logistic Time(Day)
America	United States	5
	Brazil	7
Europe	Germany	5
	United Kingdom	4
	Italy	5
Oceania	Australia	6
	New Zealand	7
Asia	India	6
	Japan	7
Middle East	Israel	6

DHL & FedEx Shipment Charges Reference	
Shipment charges(KG)	Reference DHL(USD\$)
0.00kg-1.00kg	USD\$60.00
1.00kg-2.00kg	USD\$70.00
2.00kg-3.00kg	USD\$80.00

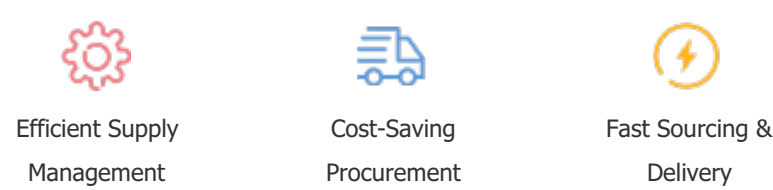
Note: The above table is for reference only. There may have some data bias for the uncontrollable factors.
Contact us if you have any questions.

Payment Support

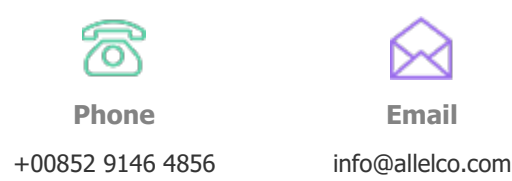
The payment method can be chosen from the methods shown below:
Wire Transfer (T/T, Bank Transfer), Western Union, Credit card, PayPal.



Your Faithful Supply Chain Partner -



Contact us if you have any questions.



Certifications & Memberships



[View More](#)

Contact us

Address: Flat/Rm C 13/F Harvard Commercial Building 105-111 Thomson Road, Wan Chai, Hong Kong
Phone: +00852 9146 4856
Fax: +00852 3010 8510
Email: info@Allelco.com