

Image may be representation.  
See specifications for product details.



## NCP718BMT330TBG

Manufacturer Part Number	<b>NCP718BMT330TBG</b>
Manufacturer	<b>onsemi</b>
Allelco Part Number	32D-NCP718BMT330TBG
ECAD Model	PCB Symbol, Footprint & 3D Mode
Parts Description	IC REG LINEAR 3.3V 300MA 6WDFN
Package	6-WDFN Exposed Pad
Data sheet	<b>NCP718.pdf</b>
	<b>NCP718.pdf</b>
RoHs Status	ROHS3 Compliant

**Get a Quote**

NCP718BMT330TBG - onsemi. New Original in Stock. Download Linear Technology NCP718BMT330TBG datasheet/specifications on AllelcoElec.com.  
Request a quote for NCP718BMT330TBG, please send us email: [info@allelco.com](mailto:info@allelco.com)

## Specifications

NCP718BMT330TBG Tech Specifications  
NCP718BMT330TBG - onsemi technical specifications, attributes, parameters

Product Attribute	Attribute Value	Product Attribute	Attribute Value
Manufacturer	onsemi	Output Type	Fixed
Voltage Dropout (Max)	0.44V @ 300mA	Output Configuration	Positive
Voltage - Output (Min/Fixed)	3.3V	Operating Temperature	-40°C ~ 125°C (TJ)
Voltage - Output (Max)	-	Number of Regulators	1
Voltage - Input (Max)	24V	Mounting Type	Surface Mount
Supplier Device Package	6-WDFN (2x2)	Current - Supply (Max)	300 µA
Series	-	Current - Quiescent (Iq)	8 µA
Protection Features	Over Current, Over Temperature	Current - Output	300mA
Package / Case	6-WDFN Exposed Pad	Control Features	Enable, Soft Start
Package	Tape & Reel (TR)	Base Product Number	NCP718
PSRR	60dB (1kHz)		

## Parts with Similar Specifications

The three parts on the right have similar specifications to onsemi NCP718BMT330TBG

Product Attribute				
Part Number	NCP718BMT330TBG	<b>NCP718BSN250T1G</b>	<b>NCP718BSN180T1G</b>	<b>NCP720BMT115TBG</b>
Manufacturer	onsemi	onsemi	onsemi	onsemi
Voltage - Output (Max)	-	-	-	-
Mounting Type	Surface Mount	Surface Mount	Surface Mount	Surface Mount
Number of Regulators	1	1	1	1
Protection Features	Over Current, Over Temperature	Over Current, Over Temperature	Over Current, Over Temperature	Over Current, Over Temperature, Under Voltage Lockout (UVLO)
Series	-	-	-	-
Output Configuration	Positive	Positive	Positive	Positive
Base Product Number	NCP718	NCP718	NCP718	NCP720
Current - Output	300mA	300mA	300mA	350mA
Operating Temperature	-40°C ~ 125°C (TJ)	-40°C ~ 125°C (TJ)	-40°C ~ 125°C (TJ)	-40°C ~ 125°C
Current - Quiescent (Iq)	8 µA	8 µA	8 µA	-
Package	Tape & Reel (TR)	Tape & Reel (TR)	Tape & Reel (TR)	Tape & Reel (TR)
Supplier Device Package	6-WDFN (2x2)	TSOT-23-5	TSOT-23-5	6-WDFN (2x2)
Control Features	Enable, Soft Start	Soft Start	Soft Start	Enable
Package / Case	6-WDFN Exposed Pad	SOT-23-5 Thin, TSOT-23-5	SOT-23-5 Thin, TSOT-23-5	6-WDFN Exposed Pad
PSRR	60dB (1kHz)	60dB (1kHz)	60dB (1kHz)	65dB ~ 25dB (1kHz ~ 1MHz)
Output Type	Fixed	Fixed	Fixed	Fixed
Voltage - Input (Max)	24V	24V	24V	5.5V
Voltage - Output (Min/Fixed)	3.3V	2.5V	1.8V	1.15V
Voltage Dropout (Max)	0.44V @ 300mA	0.49V @ 300mA	-	1.4V @ 350mA
Current - Supply (Max)	300 µA	300 µA	300 µA	-

## NCP718BMT330TBG Datasheet PDF

Download NCP718BMT330TBG pdf datasheets and onsemi documentation for NCP718BMT330TBG - onsemi.

### Datasheets

[NCP718.pdf](#)

### Environmental Information

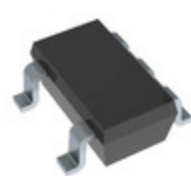
[onsemi RoHS.pdf](#)

[Material Declaration NCP718BMT330TBG.pdf](#)

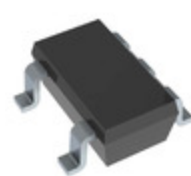
 NCP718.pdf

## Customers Also Interested in

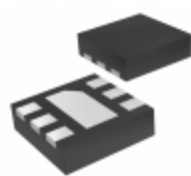
### Recommended Products



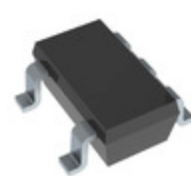
**NCP718BSN250T1G**  
onsemi  
IC REG LIN 2.5V 300MA TSOT23-5



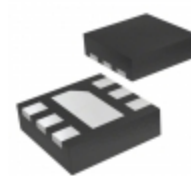
**NCP718BSN180T1G**  
onsemi  
IC REG LIN 1.8V 300MA TSOT23-5



**NCP720BMT115TBG**  
onsemi  
IC REG LINEAR 1.15V 350MA 6WDFN



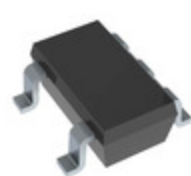
**NCP718ASN500T1G**  
onsemi  
IC REG LINEAR 5V 300MA TSOT23-5



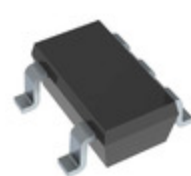
**NCP720BMT160TBG**  
onsemi  
IC REG LINEAR 1.6V 350MA 6WDFN



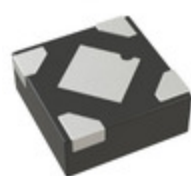
**NCP718BSN500T1G**  
onsemi  
IC REG LINEAR 5V 300MA TSOT23-5



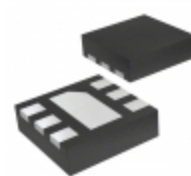
**NCP718ASNADJT1G**  
onsemi  
IC REG LIN POS ADJ 300MA TSOT23



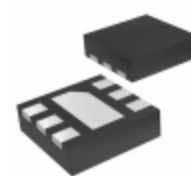
**NCP718ASN300T1G**  
onsemi  
IC REG LINEAR 3V 300MA TSOT23-5



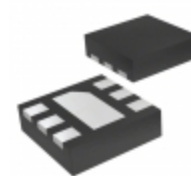
**NCP717CMX330TBG**  
onsemi  
IC REG LINEAR 3.3V 300MA 4XDFN



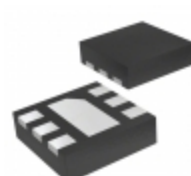
**NCP720BMT120TBG**  
onsemi  
IC REG LINEAR 1.2V 350MA 6WDFN



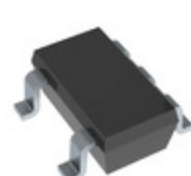
**NCP718AMT250TBG**  
onsemi  
IC REG LINEAR 2.5V 800MA 6WDFN



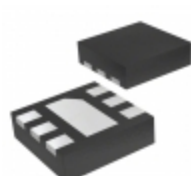
**NCP718AMTADJTBG**  
onsemi  
IC REG LIN POS ADJ 300MA 6WDFN



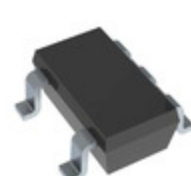
**NCP720BMT150TBG**  
onsemi  
IC REG LINEAR 1.5V 350MA 6WDFN



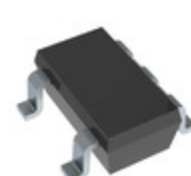
**NCP718ASN250T1G**  
onsemi  
IC REG LIN 2.5V 300MA TSOT23-5



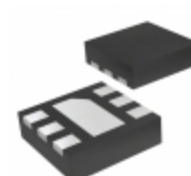
**NCP720BMT125TBG**  
onsemi  
IC REG LINEAR 1.25V 350MA 6WDFN



**NCP718ASN330T1G**  
onsemi  
IC REG LIN 3.3V 300MA TSOT23-5



**NCP718ASN180T1G**  
onsemi  
IC REG LIN 1.8V 300MA TSOT23-5



**NCP718AMT330TBG**  
onsemi  
IC REG LINEAR 3.3V 300MA 6WDFN

## Shipment

### Delivery Time

In-stock items can be shipped within 24 hours. Some parts will be arranged for delivery within 1-2 days from the date all items arrive at our warehouse. And Allelco ships order once a day at about 17:00, except Sunday. Once the goods are shipped, the estimated delivery time depends on the shipping methods and Delivery destination. The table below shows are the logistic time for some common countries.

### Delivery Cost

> Use your express account for shipment if you have one.

> Use our account for the shipment. Refer to the table below for the approximate charges.

(Different time frame / countries / package size has different price.)

### Delivery Method

> Global Common Shipment by DHL / UPS / FedEx / TNT / EMS / SF we support.

> Others more shipping ways, please get in touch with your customer manager.

Common Countries Logistic Time Reference		
Region	Country	Logistic Time(Day)
America	United States	5
	Brazil	7
Europe	Germany	5
	United Kingdom	4
	Italy	5
Oceania	Australia	6
	New Zealand	7
Asia	India	6
	Japan	7
Middle East	Israel	6

DHL & FedEx Shipment Charges Reference	
Shipment charges(KG)	Reference DHL(USD\$)
0.00kg-1.00kg	USD\$60.00
1.00kg-2.00kg	USD\$70.00
2.00kg-3.00kg	USD\$80.00

**Note:** The above table is for reference only. There may have some data bias for the uncontrollable factors.

Contact us if you have any questions.

## Payment Support

The payment method can be chosen from the methods shown below:

Wire Transfer (T/T, Bank Transfer), Western Union, Credit card, PayPal.



## Your Faithful Supply Chain Partner -



Efficient Supply Management



Cost-Saving Procurement



Fast Sourcing & Delivery

Contact us if you have any questions.



Phone

+00852 9146 4856



Email

info@allelco.com

## Certifications & Memberships



[View More](#)