

Image may be representation.
See specifications for product details.



MCP6541T-E/OT

| | |
|--------------------------|--|
| Manufacturer Part Number | MCP6541T-E/OT |
| Manufacturer | Microchip Technology |
| Allelco Part Number | 32D-MCP6541T-E/OT |
| ECAD Model | PCB Symbol, Footprint & 3D Model |
| Parts Description | IC COMPARATOR 1 GEN PUR SOT23-5 |
| Package | SC-74A, SOT-753 |
| Data sheet | Analog and Interface Product Guide.pdf MCP6541(1R,1U,2,3,4) Datasheet.pdf |
| RoHs Status | ROHS3 Compliant |

[Get a Quote](#)

MCP6541T-E/OT - Microchip Technology. New Original in Stock. Download Linear Technology MCP6541T-E/OT datasheet/specifications on AllelcoElec.com.
Request a quote for MCP6541T-E/OT, please send us email: info@allelco.com

Specifications

MCP6541T-E/OT Tech Specifications

MCP6541T-E/OT - Microchip Technology technical specifications, attributes, parameters

| Product Attribute | Attribute Value | Product Attribute | Attribute Value |
|-----------------------------------|------------------------------------|----------------------------|----------------------|
| Manufacturer | Microchip Technology | Operating Temperature | -40°C ~ 125°C |
| Voltage - Supply, Single/Dual (±) | 1.6V ~ 5.5V | Number of Elements | 1 |
| Voltage - Input Offset (Max) | 7mV @ 5.5V | Mounting Type | Surface Mount |
| Type | General Purpose | Hysteresis | 6.5mV |
| Supplier Device Package | SOT-23-5 | Current - Quiescent (Max) | 1µA |
| Series | - | Current - Output (Typ) | 30mA |
| Propagation Delay (Max) | 8µs | Current - Input Bias (Max) | 1pA @ 5.5V |
| Package / Case | SC-74A, SOT-753 | CMRR, PSRR (Typ) | 70dB CMRR, 80dB PSRR |
| Package | Tape & Reel (TR) | Base Product Number | MCP6541 |
| Output Type | CMOS, Push-Pull, Rail-to-Rail, TTL | | |

Parts with Similar Specifications

The three parts on the right have similar specifications to Microchip Technology MCP6541T-E/OT

| Product Attribute | | | | |
|-----------------------------------|------------------------------------|------------------------------------|------------------------------------|------------------------------------|
| Part Number | MCP6541T-E/OT | MCP6541T-I/OT | MCP6541-I/SN | MCP6541-I/P |
| Manufacturer | Microchip Technology | Microchip Technology | Microchip Technology | Microchip Technology |
| Operating Temperature | -40°C ~ 125°C | -40°C ~ 85°C | -40°C ~ 85°C | -40°C ~ 85°C |
| CMRR, PSRR (Typ) | 70dB CMRR, 80dB PSRR | 70dB CMRR, 80dB PSRR | 70dB CMRR, 80dB PSRR | 70dB CMRR, 80dB PSRR |
| Number of Elements | 1 | 1 | 1 | 1 |
| Voltage - Supply, Single/Dual (±) | 1.6V ~ 5.5V | 1.6V ~ 5.5V | 1.6V ~ 5.5V | 1.6V ~ 5.5V |
| Type | General Purpose | General Purpose | General Purpose | General Purpose |
| Current - Input Bias (Max) | 1pA @ 5.5V | 1pA @ 5.5V | 1pA @ 5.5V | 1pA @ 5.5V |
| Package / Case | SC-74A, SOT-753 | SC-74A, SOT-753 | 8-SOIC (0.154", 3.90mm Width) | 8-DIP (0.300", 7.62mm) |
| Hysteresis | 6.5mV | 6.5mV | 6.5mV | 6.5mV |
| Package | Tape & Reel (TR) | Tape & Reel (TR) | Tube | Tube |
| Current - Output (Typ) | 30mA | 30mA | 30mA | 30mA |
| Output Type | CMOS, Push-Pull, Rail-to-Rail, TTL | CMOS, Push-Pull, Rail-to-Rail, TTL | CMOS, Push-Pull, Rail-to-Rail, TTL | CMOS, Push-Pull, Rail-to-Rail, TTL |
| Base Product Number | MCP6541 | MCP6541 | MCP6541 | MCP6541 |
| Series | - | - | - | - |
| Voltage - Input Offset (Max) | 7mV @ 5.5V | 7mV @ 5.5V | 7mV @ 5.5V | 7mV @ 5.5V |
| Propagation Delay (Max) | 8µs | 8µs | 8µs | 8µs |
| Mounting Type | Surface Mount | Surface Mount | Surface Mount | Through Hole |
| Supplier Device Package | SOT-23-5 | SOT-23-5 | 8-SOIC | 8-PDIP |
| Current - Quiescent (Max) | 1µA | 1µA | 1µA | 1µA |

MCP6541T-E/OT Datasheet PDF

Download MCP6541T-E/OT pdf datasheets and Microchip Technology documentation for MCP6541T-E/OT - Microchip Technology.

Datasheets

[Analog and Interface Product Guide.pdf](#)

[MCP6541\(1R,1U,2,3,4\) Datasheet.pdf](#)

PCN Packaging

[Label and Packing Changes 23/Sep/2015.pdf](#)

[Packing Changes 10/Oct/2016.pdf](#)

Other Related Documents

[Development Tools Catalog.pdf](#)

PCN Assembly/Origin



MCP11/60/61/62/64/65/6G/6L/TC127
15/Sep/2022.pdf

PCN Design/Specification



MCP6541 13/Mar/2020.pdf



MCP6541/1R/1U/2/3/4 28/Oct/2022.pdf

Customers Also Interested in

Recommended Products



MCP6541T-I/OT

Microchip Technology
IC COMPARATOR 1 GEN PUR SOT23-5



MCP654-E/SL

Microchip Technology
IC OPAMP GP 4 CIRCUIT 14SOIC



MCP6541-I/SN

Microchip Technology
IC COMPARATOR 1 GEN PUR 8SOIC



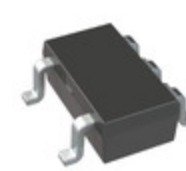
MCP6541-I/P

Microchip Technology
IC COMPARATOR 1 GEN PUR 8DIP



MCP652T-E/SN

Microchip Technology
IC OPAMP GP 2 CIRCUIT 8SOIC



MCP6541T-E/OTVAO

Microchip Technology
IC COMPARATOR 1 GEN PUR SOT23-5



MCP6541RT-E/OT

Microchip Technology
IC COMPARATOR 1 GEN PUR SOT23-5



MCP6541UT-E/OT

Microchip Technology
IC COMPARATOR 1 GEN PUR SOT23-5



MCP6542-E/MS

Microchip Technology
IC COMPARATOR 2 GEN PUR 8MSOP



MCP6541UT-I/LT

Microchip Technology
IC COMPARATOR 1 GEN PUR SC70-5



MCP6541T-I/LT

Microchip Technology
IC COMPARATOR 1 GEN PUR SC70-5



MCP6541T-I/MS

Microchip Technology
IC COMPARATOR 1 GEN PUR 8MSOP



MCP6541RT-I/OT

Microchip Technology
IC COMPARATOR 1 GEN PUR SOT23-5



MCP6541T-E/OTV03

Micrel / Microchip Technology



MCP6541T-I/SN

Microchip Technology
IC COMPARATOR 1 GEN PUR 8SOIC



MCP6522-I/SN

Micrel / Microchip Technology



MCP652-E/SN

Microchip Technology
IC OPAMP GP 2 CIRCUIT 8SOIC



MCP6541-I/MS

Microchip Technology
IC COMPARATOR 1 GEN PUR 8MSOP

Shipment

Delivery Time

In-stock items can be shipped within 24 hours. Some parts will be arranged for delivery within 1-2 days from the date all items arrive at our warehouse. And Allelco ships order once a day at about 17:00, except Sunday. Once the goods are shipped, the estimated delivery time depends on the shipping methods and Delivery destination. The table below shows are the logistic time for some common countries.

Delivery Cost

> Use your express account for shipment if you have one.

> Use our account for the shipment. Refer to the table below for the approximate charges.

(Different time frame / countries / package size has different price.)

Delivery Method

> Global Common Shipment by DHL / UPS / FedEx / TNT / EMS / SF we support.

> Others more shipping ways, please get in touch with your customer manager.

Common Countries Logistic Time Reference

| Region | Country | Logistic Time(Day) |
|-------------|----------------|--------------------|
| America | United States | 5 |
| | Brazil | 7 |
| Europe | Germany | 5 |
| | United Kingdom | 4 |
| | Italy | 5 |
| Oceania | Australia | 6 |
| | New Zealand | 7 |
| Asia | India | 6 |
| | Japan | 7 |
| Middle East | Israel | 6 |

DHL & FedEx Shipment Charges Reference

| Shipment charges(KG) | Reference DHL(USD\$) |
|----------------------|----------------------|
| 0.00kg-1.00kg | USD\$60.00 |
| 1.00kg-2.00kg | USD\$70.00 |
| 2.00kg-3.00kg | USD\$80.00 |

Note: The above table is for reference only. There may have some data bias for the uncontrollable factors.

Contact us if you have any questions.

Payment Support

The payment method can be chosen from the methods shown below:

Wire Transfer (T/T, Bank Transfer), Western Union, Credit card, PayPal.



Your Faithful Supply Chain Partner -



Efficient Supply Management



Cost-Saving Procurement



Fast Sourcing & Delivery

Contact us if you have any questions.



Phone

+00852 9146 4856



Email

info@allelco.com

Certifications & Memberships



View More

