

Image may be representation.
See specifications for product details.



MC68302CEH16C

Manufacturer Part Number	MC68302CEH16C
Manufacturer	Freescale Semiconductor, Inc. (NXP Semiconductors)
Allelco Part Number	32D-MC68302CEH16C
ECAD Model	Request Free CAD Models
Parts Description	INTEGRATED MULTIPROTOCOL MICROPR
Package	132-BQFP Bumped
Data sheet	MC68302CEH16C.pdf
RoHs Status	ROHS3 Compliant

Get a Quote

MC68302CEH16C - Freescale Semiconductor.New Original in Stock. Download Linear Technology MC68302CEH16C datasheet/specifications on AllelcoElec.com.
Request a quote for MC68302CEH16C, please send us email: info@allelco.com

Specifications

MC68302CEH16C Tech Specifications

MC68302CEH16C - Freescale Semiconductor technical specifications, attributes, parameters

Product Attribute	Attribute Value	Product Attribute	Attribute Value
Manufacturer	Freescale Semiconductor, Inc. (NXP Semiconductors)	Operating Temperature	-40°C ~ 85°C (TA)
Voltage - I/O	5.0V	Number of Cores/Bus Width	1 Core, 8/16-Bit
USB	-	Mounting Type	Surface Mount
Supplier Device Package	132-PQFP (46x46)	Graphics Acceleration	No
Speed	16MHz	Ethernet	-
Series	M683xx	Display & Interface Controllers	-
Security Features	-	Core Processor	M68000
SATA	-	Co-Processors/DSP	Communications; RISC CPM
RAM Controllers	DRAM	Base Product Number	MC683
Package / Case	132-BQFP Bumped	Additional Interfaces	GCI, IDL, ISDN, NMSI, PCM, SCPI
Package	Bulk		

Parts with Similar Specifications

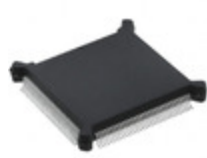
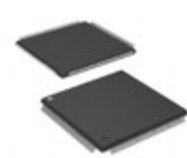
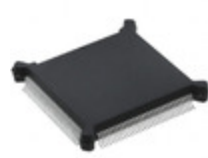
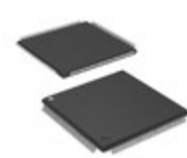
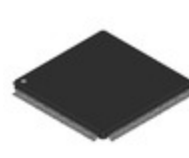
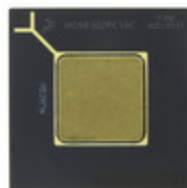
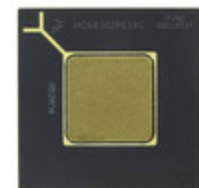
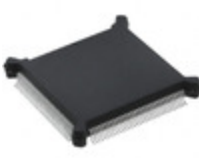
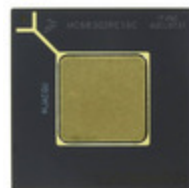
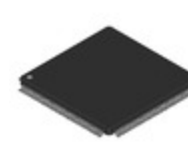
The three parts on the right have similar specifications to Freescale Semiconductor MC68302CEH16C

Product Attribute				
Part Number	MC68302CEH16C	MC68302AG16VC	MC68302CPV16VC	MC68302AG33C
Manufacturer	Freescale Semiconductor	Freescale Semiconductor	NXP USA Inc.	NXP USA Inc.
Co-Processors/DSP	Communications; RISC CPM	Communications; RISC CPM	Communications; RISC CPM	Communications; RISC CPM
Ethernet	-	-	-	-
Package	Bulk	Bulk	Tray	Tray
Security Features	-	-	-	-
USB	-	-	-	-
Speed	16MHz	16MHz	16MHz	33MHz
SATA	-	-	-	-
Number of Cores/Bus Width	1 Core, 8/16-Bit	1 Core, 8/16-Bit	1 Core, 8/16-Bit	1 Core, 8/16-Bit
Additional Interfaces	GCI, IDL, ISDN, NMSI, PCM, SCPI	GCI, IDL, ISDN, NMSI, PCM, SCPI	GCI, IDL, ISDN, NMSI, PCM, SCPI	GCI, IDL, ISDN, NMSI, PCM, SCPI
Display & Interface Controllers	-	-	-	-
Package / Case	132-BQFP Bumped	144-LQFP	144-LQFP	144-LQFP
RAM Controllers	DRAM	DRAM	DRAM	DRAM
Series	M683xx	M683xx	M683xx	M683xx
Voltage - I/O	5.0V	3.3V	3.3V	5.0V
Core Processor	M68000	M68000	M68000	M68000
Graphics Acceleration	No	No	No	No
Operating Temperature	-40°C ~ 85°C (TA)	0°C ~ 70°C (TA)	-40°C ~ 85°C (TA)	0°C ~ 70°C (TA)
Base Product Number	MC683	MC683	MC683	MC683
Mounting Type	Surface Mount	Surface Mount	Surface Mount	Surface Mount
Supplier Device Package	132-PQFP (46x46)	144-LQFP (20x20)	144-LQFP (20x20)	144-LQFP (20x20)

Customers Also Interested in

Recommended Products

MC68302AG16VC	MC68302CFC20C	MC68302CFE16	MC68302CPV16VC	MC68302AG33C	MC68302AG20C
Freescale Semiconductor MPU COLDFIRE M68000 PROCESSOR RI	MOTOROLA	MOTOROLA	NXP USA Inc. IC MPU M683XX 16MHZ 144LQFP	NXP USA Inc. IC MPU M683XX 33MHZ 144LQFP	Freescale Semiconductor MPU COLDFIRE M68000 PROCESSOR RI

**MC68302EH16C**NXP USA Inc.
IC MPU M683XX 16MHZ 132QFP**MC68302AG16VC**NXP USA Inc.
IC MPU M683XX 16MHZ 144LQFP**MC68302EH20C**NXP USA Inc.
IC MPU M683XX 20MHZ 132QFP**MC68302AG16C**NXP USA Inc.
IC MPU M683XX 16MHZ 144LQFP**MC68302AG33C**Freescale Semiconductor
IC MPU M683XX 33MHZ 144LQFP**MC68302CRC20C**Freescale Semiconductor
LAN CONTROLLER**MC68302AG20C**NXP USA Inc.
IC MPU M683XX 20MHZ 144LQFP**MC68302CRC20C**NXP USA Inc.
IC MPU M683XX 20MHZ 132PGA**MC68302CRC16C**Freescale Semiconductor
LAN CONTROLLER**MC68302CEH16C**NXP USA Inc.
IC MPU M683XX 16MHZ 132QFP**MC68302CRC16C**NXP USA Inc.
IC MPU M683XX 16MHZ 132PGA**MC68302AG16C**Freescale Semiconductor
INTEGRATED MULTI-PROTOCOL
PROCES

Shipment

Delivery Time

In-stock items can be shipped within 24 hours. Some parts will be arranged for delivery within 1-2 days from the date all items arrive at our warehouse. And Allelco ships order once a day at about 17:00, except Sunday. Once the goods are shipped, the estimated delivery time depends on the shipping methods and Delivery destination. The table below shows are the logistic time for some common countries.

Delivery Cost

> Use your express account for shipment if you have one.

> Use our account for the shipment. Refer to the table below for the approximate charges.

(Different time frame / countries / package size has different price.)

Delivery Method

> Global Common Shipment by DHL / UPS / FedEx / TNT / EMS / SF we support.

> Others more shipping ways, please get in touch with your customer manager.

Common Countries Logistic Time Reference

Region	Country	Logistic Time(Day)
America	United States	5
	Brazil	7
Europe	Germany	5
	United Kingdom	4
	Italy	5
Oceania	Australia	6
	New Zealand	7
Asia	India	6
	Japan	7
Middle East	Israel	6

DHL & FedEx Shipment Charges Reference

Shipment charges(KG)	Reference DHL(USD\$)
0.00kg-1.00kg	USD\$60.00
1.00kg-2.00kg	USD\$70.00
2.00kg-3.00kg	USD\$80.00

Note: The above table is for reference only. There may have some data bias for the uncontrollable factors.

Contact us if you have any questions.

Payment Support

The payment method can be chosen from the methods shown below:

Wire Transfer (T/T, Bank Transfer), Western Union, Credit card, PayPal.



Your Faithful Supply Chain Partner -



Efficient Supply Management



Cost-Saving Procurement



Fast Sourcing & Delivery

Contact us if you have any questions.



Phone

+00852 9146 4856



Email

info@allelco.com

Certifications & Memberships



[View More](#)

Contact us

Address: Flat/Rm C 13/F Harvard Commercial Building 105-111 Thomson Road, Wan Chai, Hong Kong

Phone: +00852 9146 4856

Fax: +00852 3010 8510

Email: info@Allelco.com