



MAX4321EUK

Manufacturer Part Number	MAX4321EUK
Manufacturer	Maxim Integrated
Allelco Part Number	32D-MAX4321EUK
ECAD Model	Request Free CAD Models
Parts Description	IC OPAMP GP 1 CIRCUIT SOT23-5
Package	SC-74A, SOT-753
Data sheet	MAX4321EUK.pdf



Get a Quote

MAX4321EUK - Analog Devices Inc./Maxim Integrated. New Original in Stock. Download Linear Technology MAX4321EUK datasheet/specifications on AllelcoElec.com.
Request a quote for MAX4321EUK, please send us email: info@allelco.com

Specifications

MAX4321EUK Tech Specifications

MAX4321EUK - Analog Devices Inc./Maxim Integrated technical specifications, attributes, parameters

Product Attribute	Attribute Value	Product Attribute	Attribute Value
Manufacturer	Maxim Integrated	Output Type	Rail-to-Rail
Voltage - Supply Span (Min)	2.4 V	Operating Temperature	-40°C ~ 85°C
Voltage - Supply Span (Max)	6.5 V	Number of Circuits	1
Voltage - Input Offset	1.2 mV	Mounting Type	Surface Mount
Supplier Device Package	SOT-23-5	Gain Bandwidth Product	5 MHz
Slew Rate	2V/μs	Current - Supply	650μA
Series	-	Current - Output / Channel	50 mA
Package / Case	SC-74A, SOT-753	Current - Input Bias	50 nA
Package	Bulk	Amplifier Type	General Purpose

Parts with Similar Specifications

The three parts on the right have similar specifications to Analog Devices Inc./Maxim Integrated MAX4321EUK

Product Attribute				
Part Number	MAX4321EUK	MAX4322ESA+	MAX4322ESA	MAX4321EUK-T
Manufacturer	Analog Devices Inc./Maxim Integrated	Analog Devices Inc./Maxim Integrated	Analog Devices Inc./Maxim Integrated	Analog Devices Inc./Maxim Integrated
Output Type	Rail-to-Rail	Rail-to-Rail	Rail-to-Rail	Rail-to-Rail
Package / Case	SC-74A, SOT-753	8-SOIC (0.154", 3.90mm Width)	8-SOIC (0.154", 3.90mm Width)	SC-74A, SOT-753
Mounting Type	Surface Mount	Surface Mount	Surface Mount	Surface Mount
Current - Supply	650μA	725μA	725μA	725μA
Package	Bulk	Tube	Tube	Tape & Reel (TR)
Operating Temperature	-40°C ~ 85°C	-40°C ~ 85°C	-40°C ~ 85°C	-40°C ~ 85°C
Voltage - Input Offset	1.2 mV	700 μV	700 μV	1.2 mV
Voltage - Supply Span (Max)	6.5 V	6.5 V	6.5 V	6.5 V
Voltage - Supply Span (Min)	2.4 V	2.4 V	2.4 V	2.4 V
Series	-	-	-	-
Amplifier Type	General Purpose	General Purpose	General Purpose	General Purpose
Number of Circuits	1	1	1	1
Current - Output / Channel	50 mA	-	50 mA	50 mA
Current - Input Bias	50 nA	50 nA	50 nA	50 nA
Slew Rate	2V/μs	2V/μs	2V/μs	2V/μs
Supplier Device Package	SOT-23-5	8-SOIC	8-SOIC	SOT-23-5
Gain Bandwidth Product	5 MHz	5 MHz	5 MHz	5 MHz

Customers Also Interested in

Recommended Products

MAX4322ESA+ Analog Devices Inc./Maxim Integrated IC OPAMP GP 1 CIRCUIT 8SOIC	MAX4312EEE+T Analog Devices Inc./Maxim Integrated IC AMP MPLEX AMP 16QSOP	MAX4322ESA Analog Devices Inc./Maxim Integrated IC OPAMP GP 1 CIRCUIT 8SOIC	MAX4310EUA+T Analog Devices Inc./Maxim Integrated IC AMP MPLEX AMP 8UMAX	MAX4321EUK-T Analog Devices Inc./Maxim Integrated IC OPAMP GP 1 CIRCUIT SOT23-5	MAX4313ESA Analog Devices Inc./Maxim Integrated IC AMP MPLEX AMP 8SOIC
MAX4311ESD+T Analog Devices Inc./Maxim Integrated IC AMP MPLEX AMP 14SOIC	MAX4322EUK+T Analog Devices Inc./Maxim Integrated IC OPAMP GP 1 CIRCUIT SOT23-5	MAX4322EUK Analog Devices Inc./Maxim Integrated IC OPAMP GP 1 CIRCUIT SOT23-5	MAX4310EUA+ Analog Devices Inc./Maxim Integrated IC AMP MPLEX AMP 8UMAX	MAX4313ESA+T Analog Devices Inc./Maxim Integrated IC AMP MPLEX AMP 8SOIC	MAX4311EEE+T Analog Devices Inc./Maxim Integrated IC AMP MPLEX AMP 16QSOP



MAX4322EUK-T

Analog Devices Inc./Maxim Integrated
IC OPAMP GP 1 CIRCUIT SOT23-5

MAX4312EEE

Analog Devices Inc./Maxim Integrated
IC AMP MPLEX AMP 16QSOP

MAX4322ESA+T

Analog Devices Inc./Maxim Integrated
IC OPAMP GP 1 CIRCUIT 8SOIC

MAX4314ESD+T

Analog Devices Inc./Maxim Integrated
IC AMP MPLEX AMP 14SOIC

MAX4321EUK+T

Analog Devices Inc./Maxim Integrated
IC OPAMP GP 1 CIRCUIT SOT23-5

MAX4315ESE

Analog Devices Inc./Maxim Integrated
IC AMP MPLEX AMP 16SOIC

Shipment

Delivery Time

In-stock items can be shipped within 24 hours. Some parts will be arranged for delivery within 1-2 days from the date all items arrive at our warehouse. And Allelco ships order once a day at about 17:00, except Sunday. Once the goods are shipped, the estimated delivery time depends on the shipping methods and Delivery destination. The table below shows are the logistic time for some common countries.

Delivery Cost

> Use your express account for shipment if you have one.

> Use our account for the shipment. Refer to the table below for the approximate charges.

(Different time frame / countries / package size has different price.)

Delivery Method

> Global Common Shipment by DHL / UPS / FedEx / TNT / EMS / SF we support.

> Others more shipping ways, please get in touch with your customer manager.

Common Countries Logistic Time Reference

Region	Country	Logistic Time(Day)
America	United States	5
	Brazil	7
Europe	Germany	5
	United Kingdom	4
	Italy	5
Oceania	Australia	6
	New Zealand	7
Asia	India	6
	Japan	7
Middle East	Israel	6

DHL & FedEx Shipment Charges Reference

Shipment charges(KG)	Reference DHL(USD\$)
0.00kg-1.00kg	USD\$60.00
1.00kg-2.00kg	USD\$70.00
2.00kg-3.00kg	USD\$80.00

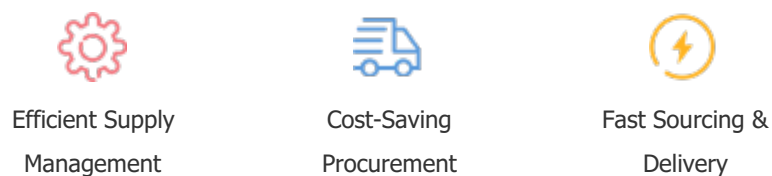
Note: The above table is for reference only. There may have some data bias for the uncontrollable factors.
Contact us if you have any questions.

Payment Support

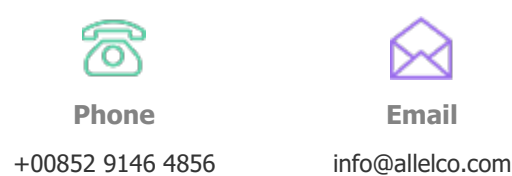
The payment method can be chosen from the methods shown below:
Wire Transfer (T/T, Bank Transfer), Western Union, Credit card, PayPal.



Your Faithful Supply Chain Partner -



Contact us if you have any questions.



Certifications & Memberships



[View More](#)



Contact us

Address: Flat/Rm C 13/F Harvard Commercial Building 105-111 Thomson Road, Wan Chai, Hong Kong
Phone: +00852 9146 4856
Fax: +00852 3010 8510
Email: info@Allelco.com