



Image may be representation.
See specifications for product details.



AD7722ASZ

Manufacturer Part Number	AD7722ASZ
Manufacturer	Analog Devices, Inc.
Allelco Part Number	32D-AD7722ASZ
ECAD Model	PCB Symbol, Footprint & 3D Model
Parts Description	IC ADC 16BIT SIGMA-DELTA 44MQFP
Package	44-QFP
Data sheet	AD7722.pdf
RoHs Status	ROHS3 Compliant

Get a Quote

AD7722ASZ - Analog Devices Inc..New Original in Stock. Download Linear Technology AD7722ASZ datasheet/specifications on AllelcoElec.com.
Request a quote for AD7722ASZ, please send us email: info@allelco.com

Specifications

AD7722ASZ Tech Specifications

AD7722ASZ - Analog Devices Inc. technical specifications, attributes, parameters

Product Attribute	Attribute Value	Product Attribute	Attribute Value
Manufacturer	Analog Devices, Inc.	Number of Inputs	1
Voltage - Supply, Digital	5V	Number of Bits	16
Voltage - Supply, Analog	5V	Number of A/D Converters	1
Supplier Device Package	44-MQFP (10x10)	Mounting Type	Surface Mount
Series	-	Input Type	Differential
Sampling Rate (Per Second)	195k	Features	-
Reference Type	External, Internal	Data Interface	SPI, Parallel
Ratio - S/H:ADC	-	Configuration	ADC
Package / Case	44-QFP	Base Product Number	AD7722
Package	Tray	Architecture	Sigma-Delta
Operating Temperature	-40°C ~ 85°C		

Parts with Similar Specifications

The three parts on the right have similar specifications to Analog Devices Inc. AD7722ASZ

Product Attribute				
Part Number	AD7722ASZ	AD7719BRUZ	AD7725BSZ	AD7723BSZ-REEL
Manufacturer	Analog Devices Inc.	Analog Devices Inc.	Analog Devices Inc.	Analog Devices Inc.
Voltage - Supply, Digital	5V	2.7V ~ 3.6V, 5V	5V	5V
Mounting Type	Surface Mount	Surface Mount	Surface Mount	Surface Mount
Operating Temperature	-40°C ~ 85°C	-40°C ~ 85°C	-40°C ~ 85°C	-40°C ~ 85°C
Number of Bits	16	16, 24	16	16
Architecture	Sigma-Delta	Sigma-Delta	Sigma-Delta	Sigma-Delta
Input Type	Differential	Differential, Pseudo-Differential, Single Ended	Differential	Differential
Series	-	-	-	-
Number of Inputs	1	3, 6	1	1
Voltage - Supply, Analog	5V	2.7V ~ 3.6V, 5V	5V	5V
Data Interface	SPI, Parallel	SPI, DSP	SPI, Parallel	SPI, Parallel
Ratio - S/H:ADC	-	-	-	-
Supplier Device Package	44-MQFP (10x10)	28-TSSOP	44-MQFP (10x10)	44-MQFP (10x10)
Base Product Number	AD7722	AD7719	AD7725	AD7723
Reference Type	External, Internal	External	External, Internal	External, Internal
Sampling Rate (Per Second)	195k	105	900k	1.2M
Package / Case	44-QFP	28-TSSOP (0.173", 4.40mm Width)	44-QFP	44-QFP
Configuration	ADC	MUX-PGA-ADC	ADC	ADC
Number of A/D Converters	1	2	1	1
Features	-	PGA, Simultaneous Sampling, Temperature Sensor	-	-
Package	Tray	Tube	Tray	Tape & Reel (TR)

AD7722ASZ Datasheet PDF

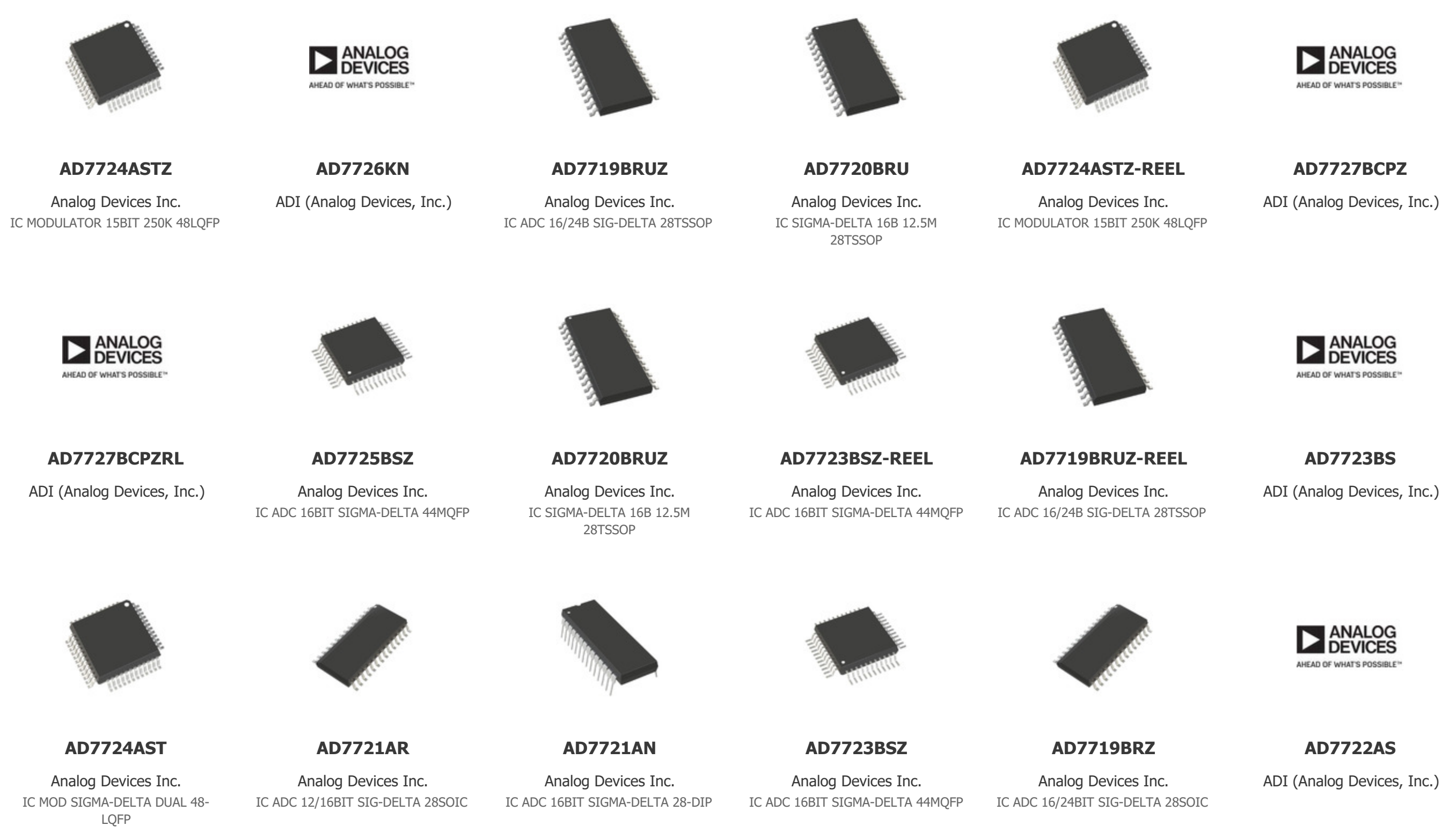
Download AD7722ASZ pdf datasheets and Analog Devices Inc. documentation for AD7722ASZ - Analog Devices Inc..

Datasheets



Customers Also Interested in

Recommended Products



Shipment

Delivery Time

In-stock items can be shipped within 24 hours. Some parts will be arranged for delivery within 1-2 days from the date all items arrive at our warehouse. And Allelco ships order once a day at about 17:00, except Sunday. Once the goods are shipped, the estimated delivery time depends on the shipping methods and Delivery destination. The table below shows are the logistic time for some common countries.

Delivery Cost

- > Use your express account for shipment if you have one.
 - > Use our account for the shipment. Refer to the table below for the approximate charges.
- (Different time frame / countries / package size has different price.)

Delivery Method

- > Global Common Shipment by DHL / UPS / FedEx / TNT / EMS / SF we support.
- > Others more shipping ways, please get in touch with your customer manager.

Common Countries Logistic Time Reference		
Region	Country	Logistic Time(Day)
America	United States	5
	Brazil	7
Europe	Germany	5
	United Kingdom	4
	Italy	5
Oceania	Australia	6
	New Zealand	7
Asia	India	6
	Japan	7
Middle East	Israel	6

DHL & FedEx Shipment Charges Reference	
Shipment charges(KG)	Reference DHL(USD\$)
0.00kg-1.00kg	USD\$60.00
1.00kg-2.00kg	USD\$70.00
2.00kg-3.00kg	USD\$80.00

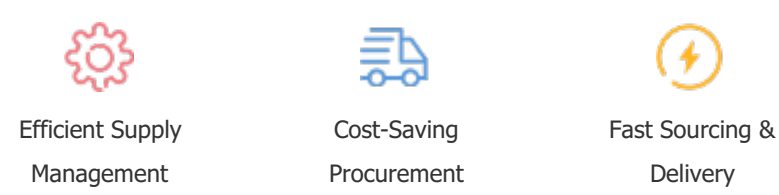
Note: The above table is for reference only. There may have some data bias for the uncontrollable factors.
Contact us if you have any questions.

Payment Support

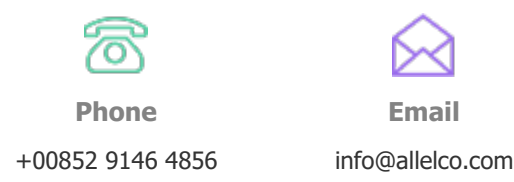
The payment method can be chosen from the methods shown below:
Wire Transfer (T/T, Bank Transfer), Western Union, Credit card, PayPal.



Your Faithful Supply Chain Partner -



Contact us if you have any questions.



Certifications & Memberships



[View More](#)