



SIZ980DT-T1-GE3

| | |
|--------------------------|-------------------------------|
| Manufacturer Part Number | SIZ980DT-T1-GE3 |
| Manufacturer | Vishay / Siliconix |
| Allelco Part Number | 32D-SIZ980DT-T1-GE3 |
| ECAD Model | 3D Model |
| Parts Description | MOSFET 2 N-CH 30V 8-POWERPAIR |
| Package | 8-PowerWDFN |
| Data sheet | SIZ980DT.pdf |



Get a Quote

SIZ980DT-T1-GE3 - Vishay Siliconix. New Original in Stock. Download Linear Technology SIZ980DT-T1-GE3 datasheet/specifications on AllelcoElec.com.
Request a quote for SIZ980DT-T1-GE3, please send us email: info@allelco.com

Specifications

SIZ980DT-T1-GE3 Tech Specifications
SIZ980DT-T1-GE3 - Vishay Siliconix technical specifications, attributes, parameters

| Product Attribute | Attribute Value | Product Attribute | Attribute Value |
|-------------------------|--|--|------------------------------|
| Manufacturer | Vishay / Siliconix | Operating Temperature | -55°C ~ 150°C (TJ) |
| Vgs(th) (Max) @ Id | 2.2V @ 250µA | Mounting Type | Surface Mount |
| Technology | MOSFET (Metal Oxide) | Input Capacitance (Ciss) (Max) @ Vds | 930pF @ 15V, 4600pF @ 15V |
| Supplier Device Package | 8-PowerPair® (6x5) | Gate Charge (Qg) (Max) @ Vgs | 8.1nC @ 4.5V, 35nC @ 4.5V |
| Series | TrenchFET® | FET Feature | - |
| Rds On (Max) @ Id, Vgs | 6.7mOhm @ 15A, 10V, 1.6mOhm @ 19A, 10V | Drain to Source Voltage (Vdss) | 30V |
| Power - Max | 20W, 66W | Current - Continuous Drain (Id) @ 25°C | 20A (Tc), 60A (Tc) |
| Package / Case | 8-PowerWDFN | Configuration | 2 N-Channel (Dual), Schottky |
| Package | Tape & Reel (TR) | Base Product Number | SIZ980 |

Parts with Similar Specifications

The three parts on the right have similar specifications to Vishay Siliconix SIZ980DT-T1-GE3

| Product Attribute | NO PICTURE | | | |
|--|--|--|---------------------------|---------------------------|
| Part Number | SIZ980DT-T1-GE3 | SIZ998DT-T1-GE3 | SIZ902DT-T1-GE3 | SIZ900DT-T1-GE3 |
| Manufacturer | Vishay Siliconix | Vishay Siliconix | Vishay Siliconix | Vishay Siliconix |
| Power - Max | 20W, 66W | 20.2W, 32.9W | 29W, 66W | 48W, 100W |
| Rds On (Max) @ Id, Vgs | 6.7mOhm @ 15A, 10V, 1.6mOhm @ 19A, 10V | 6.7mOhm @ 15A, 10V, 2.8mOhm @ 19A, 10V | 12mOhm @ 13.8A, 10V | 7.2mOhm @ 19.4A, 10V |
| Supplier Device Package | 8-PowerPair® (6x5) | 8-PowerPair® (6x5) | 8-PowerPair® (6x5) | 6-PowerPair™ |
| Configuration | 2 N-Channel (Dual), Schottky | 2 N-Channel (Dual), Schottky | 2 N-Channel (Half Bridge) | 2 N-Channel (Half Bridge) |
| Input Capacitance (Ciss) (Max) @ Vds | 930pF @ 15V, 4600pF @ 15V | 930pF @ 15V, 2620pF @ 15V | 790pF @ 15V | 1830pF @ 15V |
| Package | Tape & Reel (TR) | Tape & Reel (TR) | Tape & Reel (TR) | Tape & Reel (TR) |
| Package / Case | 8-PowerWDFN | 8-PowerWDFN | 8-PowerWDFN | 6-PowerPair™ |
| Base Product Number | SIZ980 | SIZ998 | SIZ902 | SIZ900 |
| Series | TrenchFET® | TrenchFET® | TrenchFET® | TrenchFET® |
| FET Feature | - | - | Logic Level Gate | Logic Level Gate |
| Gate Charge (Qg) (Max) @ Vgs | 8.1nC @ 4.5V, 35nC @ 4.5V | 8.1nC @ 4.5V, 19.8nC @ 4.5V | 21nC @ 10V | 45nC @ 10V |
| Operating Temperature | -55°C ~ 150°C (TJ) | -55°C ~ 150°C (TJ) | -55°C ~ 150°C (TJ) | -55°C ~ 150°C (TJ) |
| Technology | MOSFET (Metal Oxide) | MOSFET (Metal Oxide) | MOSFET (Metal Oxide) | MOSFET (Metal Oxide) |
| Drain to Source Voltage (Vdss) | 30V | 30V | 30V | 30V |
| Current - Continuous Drain (Id) @ 25°C | 20A (Tc), 60A (Tc) | 20A (Tc), 60A (Tc) | 16A | 24A, 28A |
| Mounting Type | Surface Mount | Surface Mount | Surface Mount | Surface Mount |
| Vgs(th) (Max) @ Id | 2.2V @ 250µA | 2.2V @ 250µA | 2.2V @ 250µA | 2.4V @ 250µA |

SIZ980DT-T1-GE3 Datasheet PDF

Download SIZ980DT-T1-GE3 pdf datasheets and Vishay Siliconix documentation for SIZ980DT-T1-GE3 - Vishay Siliconix.

Datasheets

[SIZ980DT.pdf](#)

PCN Design/Specification

[SIZ980 Material Chg 13/Jan/2021.pdf](#)


[SIZ980DT-T1-GE3 Material/Clip Chg 19/Nov/2018.pdf](#)

PCN Assembly/Origin

[SIZ980DT-T1-GE3 Material Set Conv 19/Nov/2018.pdf](#)

Customers Also Interested in

Recommended Products

| | | | | | |
|---|---|--|--|---|---|
|  |  |  |  |  |  |
| SIZ998DT-T1-GE3 Vishay Siliconix MOSFET 2 N-CH 30V 8-POWERPAIR | SIZ902DT-T1-GE3 Vishay Siliconix MOSFET 2N-CH 30V 16A POWERPAIR | SIZ914DT-GE3 Electro-Films (EFI) / Vishay | SIZ900DT-T1-GE3 Vishay Siliconix MOSFET 2N-CH 30V 24A POWERPAIR | SIZ904DT-T1-GE3 Vishay Siliconix MOSFET 2N-CH 30V 12A POWERPAIR | SIZ918DT-T1-GE3 Vishay Siliconix MOSFET 2N-CH 30V 16A POWERPAIR |
|  |  |  |  |  |  |
| SIZB60-4072 SHINDENGE | SIZF90DT-T1-GE3 MOS Electro-Films (EFI) / Vishay | SIZ920DT-T1-GE3 Vishay Siliconix MOSFET 2N-CH 30V 40A PWRPAIR | SIZ900DT-T1-GE3 MOS Electro-Films (EFI) / Vishay | SIZ910DT-T1-GE3 Vishay Siliconix MOSFET 2N-CH 30V 40A POWERPAIR | SIZB20 SHINDENGEN |
|  |  |  |  |  |  |
| SIZ920DP-T1-GE3 Electro-Films (EFI) / Vishay | SIZF906DT-T1-GE3 Vishay Siliconix MOSFET 2 N-CH 30V 60A POWERPAIR | SIZ998BDT-T1-GE3 Vishay Siliconix DUAL N-CHANNEL 30-V (D-S) MOSFET | SIZ988DT-T1-GE3 Vishay Siliconix MOSFET 2 N-CH 30V 8-POWERPAIR | SIZ916DT-T1-GE3 MOS Electro-Films (EFI) / Vishay | SIZ916DT-T1-GE3 Vishay Siliconix MOSFET 2N-CH 30V 16A POWERPAIR |

Shipment

Delivery Time

In-stock items can be shipped within 24 hours. Some parts will be arranged for delivery within 1-2 days from the date all items arrive at our warehouse. And Allelco ships order once a day at about 17:00, except Sunday. Once the goods are shipped, the estimated delivery time depends on the shipping methods and Delivery destination. The table below shows are the logistic time for some common countries.

Delivery Cost

- > Use your express account for shipment if you have one.
- > Use our account for the shipment. Refer to the table below for the approximate charges.
(Different time frame / countries / package size has different price.)

Delivery Method

- > Global Common Shipment by DHL / UPS / FedEx / TNT / EMS / SF we support.
- > Others more shipping ways, please get in touch with your customer manager.

| Common Countries Logistic Time Reference | | |
|--|----------------|--------------------|
| Region | Country | Logistic Time(Day) |
| America | United States | 5 |
| | Brazil | 7 |
| Europe | Germany | 5 |
| | United Kingdom | 4 |
| | Italy | 5 |
| Oceania | Australia | 6 |
| | New Zealand | 7 |
| Asia | India | 6 |
| | Japan | 7 |
| Middle East | Israel | 6 |

| DHL & FedEx Shipment Charges Reference | |
|--|----------------------|
| Shipment charges(KG) | Reference DHL(USD\$) |
| 0.00kg-1.00kg | USD\$60.00 |
| 1.00kg-2.00kg | USD\$70.00 |
| 2.00kg-3.00kg | USD\$80.00 |

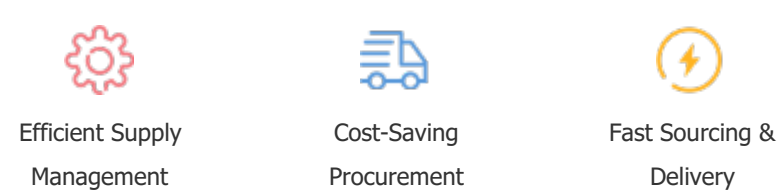
Note: The above table is for reference only. There may have some data bias for the uncontrollable factors.
Contact us if you have any questions.

Payment Support

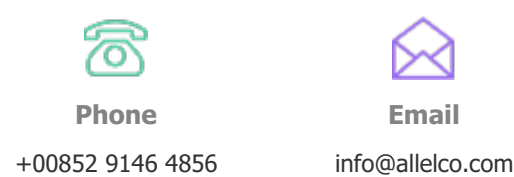
The payment method can be chosen from the methods shown below:
Wire Transfer (T/T, Bank Transfer), Western Union, Credit card,
PayPal.



Your Faithful Supply Chain Partner -



Contact us if you have any questions.



Certifications & Memberships



[View More](#)