



Image may be representation.
See specifications for product details.



MAX6394US310D3+T

Manufacturer Part Number	MAX6394US310D3+T
Manufacturer	Maxim Integrated
Allelco Part Number	32D-MAX6394US310D3+T
ECAD Model	Request Free CAD Models
Parts Description	IC SUPERVISOR 1 CHANNEL SOT143-4
Package	TO-253-4, TO-253AA
Data sheet	MAX6394.pdf
RoHs Status	ROHS3 Compliant

Get a Quote

MAX6394US310D3+T - Analog Devices Inc./Maxim Integrated. New Original in Stock. Download Linear Technology MAX6394US310D3+T datasheet/specifications on AllelcoElec.com.
Request a quote for MAX6394US310D3+T, please send us email: info@allelco.com

Specifications

MAX6394US310D3+T Tech Specifications
MAX6394US310D3+T - Analog Devices Inc./Maxim Integrated technical specifications, attributes, parameters

Product Attribute	Attribute Value	Product Attribute	Attribute Value
Manufacturer	Maxim Integrated	Package / Case	TO-253-4, TO-253AA
Voltage - Threshold	3.102V	Package	Tape & Reel (TR)
Type	Simple Reset/Power-On Reset	Output	Open Drain or Open Collector
Supplier Device Package	SOT-143-4	Operating Temperature	-40°C ~ 125°C (TA)
Series	-	Number of Voltages Monitored	1
Reset Timeout	105ms Minimum	Mounting Type	Surface Mount
Reset	Active Low	Base Product Number	MAX6394

Parts with Similar Specifications

The three parts on the right have similar specifications to Analog Devices Inc./Maxim Integrated MAX6394US310D3+T

Product Attribute				
Part Number	MAX6394US310D3+T	MAX6397LATA+T	MAX6397SATA+T	MAX6392KA16
Manufacturer	Analog Devices Inc./Maxim Integrated	Analog Devices Inc./Maxim Integrated	Analog Devices Inc./Maxim Integrated	Analog Devices Inc./Maxim Integrated
Type	Simple Reset/Power-On Reset	Regulator/Supervisor	Regulator/Supervisor	Multi-Voltage Supervisor
Voltage - Threshold	3.102V	4.67V	2.892V	1.58V, Adj
Reset	Active Low	Active Low	Active Low	Active Low
Package / Case	TO-253-4, TO-253AA	8-WDFN Exposed Pad	8-WDFN Exposed Pad	SOT-23-8
Mounting Type	Surface Mount	Surface Mount	Surface Mount	Surface Mount
Series	-	-	-	-
Package	Tape & Reel (TR)	Tape & Reel (TR)	Tape & Reel (TR)	Bulk
Number of Voltages Monitored	1	1	1	2
Output	Open Drain or Open Collector	Open Drain or Open Collector	Open Drain or Open Collector	Open Drain, Push-Pull
Reset Timeout	105ms Minimum	-	-	140ms/Adjustable Minimum
Operating Temperature	-40°C ~ 125°C (TA)	-40°C ~ 125°C (TA)	-40°C ~ 125°C (TA)	-40°C ~ 85°C (TA)
Base Product Number	MAX6394	MAX6397	MAX6397	MAX6392
Supplier Device Package	SOT-143-4	8-TDFN (3x3)	8-TDFN (3x3)	SOT-23-8

MAX6394US310D3+T Datasheet PDF

Download MAX6394US310D3+T pdf datasheets and Analog Devices Inc./Maxim Integrated documentation for MAX6394US310D3+T - Analog Devices Inc./Maxim Integrated.

Datasheets

[MAX6394.pdf](#)

Environmental Information

[Maxim Integrated REACH.pdf](#)

[Maxim Integrated RoHS Cert.pdf](#)

[Red Phosphorous Certificate.pdf](#)

Part Numbering Guide

[Part Numbering System.pdf](#)

Customers Also Interested in

Recommended Products

MAX6397LATA+T	MAX6397SATA+T	MAX6392KA16	MAX6394US480D3/V+T	MAX639CPA+	MAX6399ATA+T
Analog Devices Inc./Maxim Integrated	Analog Devices Inc./Maxim Integrated	Analog Devices Inc./Maxim Integrated	Analog Devices Inc./Maxim Integrated	Analog Devices Inc./Maxim Integrated	Analog Devices Inc./Maxim Integrated
IC SUPERVISOR 1 CHANNEL 8TDFN	IC SUPERVISOR 1 CHANNEL 8TDFN	IC SUPERVISOR 2 CHANNEL SOT23-8	IC SUPERVISOR 1 CHANNEL SOT143-	IC REG BUCK ADJ/SV 225MA 8DIP	IC SUPERVISOR 1 CHANNEL 8TDFN



MAX6392KA16-T

Analog Devices / Maxim Integrated

MAX6392KA29+T

Maxim Integrated
IC SUPERVISOR MPU DL SOT23-8



MAX6392KA31

Analog Devices Inc./Maxim Integrated
IC SUPERVISOR 2 CHANNEL SOT23-8



MAX6392KA46+T

Analog Devices Inc./Maxim Integrated
IC SUPERVISOR 2 CHANNEL SOT23-8



MAX6392KA26+T

Analog Devices Inc./Maxim Integrated
IC SUPERVISOR MPU DL SOT23-8



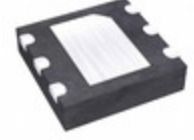
MAX639CPA

Analog Devices Inc./Maxim Integrated
IC REG BUCK ADJ/5V 225MA 8DIP



MAX6392KA29

Analog Devices Inc./Maxim Integrated
IC SUPERVISOR 2 CHANNEL SOT23-8



MAX6398ATT+T

Analog Devices Inc./Maxim Integrated
IC SUPERVISOR 1 CHANNEL 6TDFN



MAX6394US317D3+T

Analog Devices Inc./Maxim Integrated
IC MPU/RESET CIRC 3.17V SOT143-4



MAX6394US480D1/V+T

Analog Devices Inc./Maxim Integrated
IC SUPERVISOR 1 CHANNEL SOT143-4



MAX6392KA26

Analog Devices Inc./Maxim Integrated
IC SUPERVISOR 2 CHANNEL SOT23-8



MAX6398ATT

Analog Devices Inc./Maxim Integrated
MAX6398 OVP SWITCH

Shipment

Delivery Time

In-stock items can be shipped within 24 hours. Some parts will be arranged for delivery within 1-2 days from the date all items arrive at our warehouse. And Allelco ships order once a day at about 17:00, except Sunday. Once the goods are shipped, the estimated delivery time depends on the shipping methods and Delivery destination. The table below shows are the logistic time for some common countries.

Delivery Cost

> Use your express account for shipment if you have one.

> Use our account for the shipment. Refer to the table below for the approximate charges.

(Different time frame / countries / package size has different price.)

Delivery Method

> Global Common Shipment by DHL / UPS / FedEx / TNT / EMS / SF we support.

> Others more shipping ways, please get in touch with your customer manager.

Common Countries Logistic Time Reference		
Region	Country	Logistic Time(Day)
America	United States	5
	Brazil	7
Europe	Germany	5
	United Kingdom	4
	Italy	5
Oceania	Australia	6
	New Zealand	7
Asia	India	6
	Japan	7
Middle East	Israel	6

DHL & FedEx Shipment Charges Reference	
Shipment charges(KG)	Reference DHL(USD\$)
0.00kg-1.00kg	USD\$60.00
1.00kg-2.00kg	USD\$70.00
2.00kg-3.00kg	USD\$80.00

Note: The above table is for reference only. There may have some data bias for the uncontrollable factors.

Contact us if you have any questions.

Payment Support

The payment method can be chosen from the methods shown below:

Wire Transfer (T/T, Bank Transfer), Western Union, Credit card, PayPal.



Your Faithful Supply Chain Partner -



Efficient Supply Management



Cost-Saving Procurement



Fast Sourcing & Delivery

Contact us if you have any questions.



Phone

+00852 9146 4856



Email

info@allelco.com

Certifications & Memberships



View More



Contact us

Address: Flat/Rm C 13/F Harvard Commercial Building 105-111 Thomson Road, Wan Chai, Hong Kong

Phone: +00852 9146 4856

Fax: +00852 3010 8510

Email: info@Allelco.com